

## Species on Anahuac National Wildlife Refuge

### SWALLOWTAILS

- Pipevine Swallowtail
- Black Swallowtail
- Giant Swallowtail
- Eastern Tiger Swallowtail
- Spicebush Swallowtail

### WHITES

- Checkered White
- Great Southern White

### SULPHURS

- Orange Sulphur
- Cloudless Sulphur
- Southern Dogface
- Little Yellow
- Sleepy Orange
- Dainty Sulphur

### HAIRSTREAKS

- Gray Hairstreak
- Red-banded Hairstreak
- Dusky-blue Groundstreak

### BLUES

- Western Pygmy Blue
- Ceraunus Blue
- Reakirt's Blue

### SNOUTS

- American Snout

### FRITILLARIES

- Gulf Fritillary
- Variegated Fritillary

### TRUE BRUSHFOOTS

- Phaon Crescent
- Pearl Crescent
- Question Mark
- American Lady
- Painted Lady
- Red Admiral
- Common Buckeye

### ADMIRALS

- Red-Spotted Purple
- Viceroy

### LEAFWINGS

- Goatweed Leafwing

### EMPERORS

- Tawny Emperor

### SATYRS

- Carolina Satyr

### MONARCHS

- Monarch
- Queen

### SPREAD-WING SKIPPERS

- White-striped Longtail
- Long-tailed Skipper
- Horace's Duskywing
- Funereal Duskywing
- White-checkered Skipper\*
- Tropical Checkered Skipper

### GRASS SKIPPERS

- Swarthy Skipper
- Clouded Skipper
- Least Skipper
- Southern Skipperling
- Fiery Skipper
- Broad-winged Skipper
- Bay Skipper
- Dun Skipper
- Eufala Skipper
- Brazilian Skipper
- Salt Marsh Skipper
- Obscure Skipper
- Ocola Skipper

\*The White-checkered skipper and Common Checkered-white are often referred to as Common/White Checkered-skipper because observation under microscopes is needed to tell the two species apart.

## Facts about Butterflies

Anahuac National Wildlife Refuge showcases at least **55 butterfly species**, including the largest North American butterfly (Eastern Giant Swallowtail) and the smallest (Western Pygmy-blue).

The Monarch butterfly is the official state insect of Texas. **Monarchs pass through the refuge twice a year** on their migrations north and south. We are worried about monarch survival because their populations are declining rapidly.

The monarch is just one of many butterflies that is in decline. **Each butterfly species can only eat specific plants.** Host plants provide the correct food for caterpillars, and nectar plants provide the correct food for adult butterflies. **Habitat protection and restoration are key to saving butterfly populations.**

What can you do to help? **Landscape with native plants, or if you have a porch, plant native plants in flower pots.** Learn about the host plants of your favorite butterflies and support habitat restoration.

Use this checklist as a start to exploring the butterflies of this area. If you get a good photo, consider uploading it to a citizen science site. Every observation helps!

### For More Information Contact

Anahuac National Wildlife Refuge  
P.O. Box 278, 4017 FM 563  
Anahuac, TX 77514  
409/267-3337  
409/267-4314 Fax  
[www.fws.gov/refuge/Anahuac](http://www.fws.gov/refuge/Anahuac)



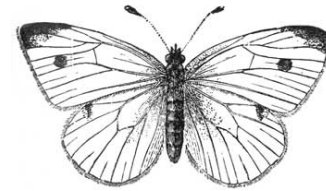
Images © Tripp Davenport; Alan Schmierer

June 2020

U.S. Fish & Wildlife Service

# Anahuac National Wildlife Refuge

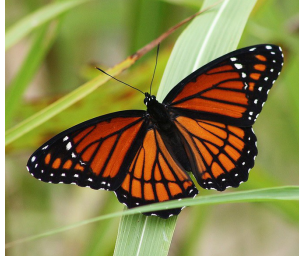
## Butterflies



Monarch



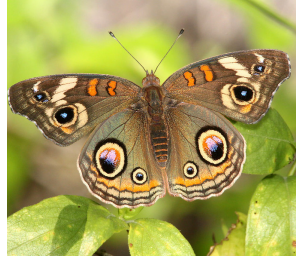
Viceroy



Question Mark



Common Buckeye



Gray Hairstreak



Dusky-blue Groundsreak



Queen



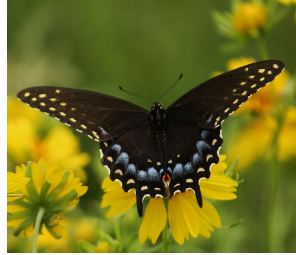
Gulf Fritillary



Pipevine Swallowtail



Black Swallowtail



Red-banded Hairstreak



Western Pygmy-Blue



Tawny Emperor



Variiegated Fritillary



Giant Swallowtail



Eastern Tiger Swallowtail



Common/White-Checker



Tropical Checkered Skipper



Painted Lady



Phaon Crescent



Little Yellow



Cloudless Sulphur



Funereal Duskywing



American Snout



Pearl Crescent



Red Admiral



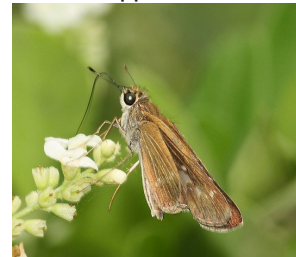
Fiery Skipper



Least Skipper



Ocola Skipper



Long-tailed Skipper

