

Hunting & Fishing Regulations

There will be no hunting fees or hunter quotas for the Sacramento River NWR (refuge). All gravel bars and specified refuge lands are open to hunting and fishing in the appropriate season, see authorized species below.

- A. Migratory Game Bird Hunting.** We allow hunting of goose, duck, coot, moorhen, dove, and snipe on designated areas of the refuge in accordance with State regulations subject to the following conditions:
1. We only allow shotgun hunting.
 2. You may possess only approved nontoxic shot while in the field.
 3. We prohibit hunting within 50 feet (15m) of any landward boundary adjacent to private property.
 4. We prohibit hunting within 150 yards (45m) of any occupied dwelling, house, residence, or other building or any barn or other outbuilding used in connection therewith.
 5. We prohibit permanent blinds. You must remove all personal property, including decoys and boats, by 1-1/2 hours after legal sunset.
 6. We prohibit cutting or removal of vegetation for blind construction or for making trails.
- B. Upland Game Hunting.** We allow hunting of pheasant, turkey, and quail on designated areas of the refuge in accordance with State regulations subject to the following conditions:
1. We only allow shotgun and archery hunting.
 2. Conditions A2 through A6.
- C. Big Game Hunting.** We allow hunting of black-tailed deer and feral pigs on designated areas of refuge in accordance with State regulations subject to the following conditions:
1. Conditions A2 through A6, and B1.
 2. Feral pigs may be hunted Sept 1 - Mar 15.
 3. Dogs are prohibited while hunting big game.
 4. We prohibit construction or use of permanent blinds, platforms, ladders or screw-in foot pegs.
 5. You must remove all personal property, including stands and trail cameras, from the refuge by 1-1/2 hours after legal sunset.
 6. Shotgun, firing single non-lead shotgun slugs, and archery hunting only. No rifles or pistols may be used or possessed on the refuge.
- D. Sport Fishing.** We allow sport fishing on designated areas of the refuge in accordance with State regulations subject to the following conditions:
1. Condition A6.

Sacramento National Wildlife Refuge Complex
752 County Road 99W
Willows, CA 95988
Phone: 530/934-2801
www.fws.gov/refuge/sacramento_river

U.S. Fish & Wildlife Service
<http://www.fws.gov>

For Refuge Information
1 800/344-WILD

California Relay Service
TTY 1 800/735-2929
Voice 1 800/735-2922

Visitors with disabilities may be reasonably accommodated upon request, and/or receive an alternative format publication.

Hunting and Fishing Regulations viewable on the refuge website listed above.

August 2021



U.S. Fish & Wildlife Service

Sacramento River

National Wildlife Refuge

Bogg's Bend Unit



Visitor Activities & Restrictions

General Information

There are no recreation fees. Please respect all signs' instructions, area closures and access regulations.



Day use only, open 2 hours before legal sunrise to 1-1/2 hours after legal sunset. Only boat access to gravel bars is allowed at other hours.



Access is by foot from the parking area (located on CDFW's Princeton Southeast Unit) or by boat from the river.



Hunting is allowed only in designated areas from August 15 to May 31 (see regulations).



Dogs are welcome but must be kept on leash, except for authorized hunting activities under the immediate control of a licensed hunter.



Hiking



Wildlife Observation



Photography



Fishing is allowed, follow State regulations.



Camping allowed only on gravel bars for up to 7 days during a 30 day period. Camping is prohibited on other refuge lands.



Take out what you bring in. Littering is unlawful!



Rifles and pistols are prohibited. Shotguns and archery equipment are permitted during hunting season in hunting areas only (see regulations). No target shooting.



Fires are prohibited except for portable gas stoves on gravel bars.



Horses are prohibited.



Bicycles are prohibited.

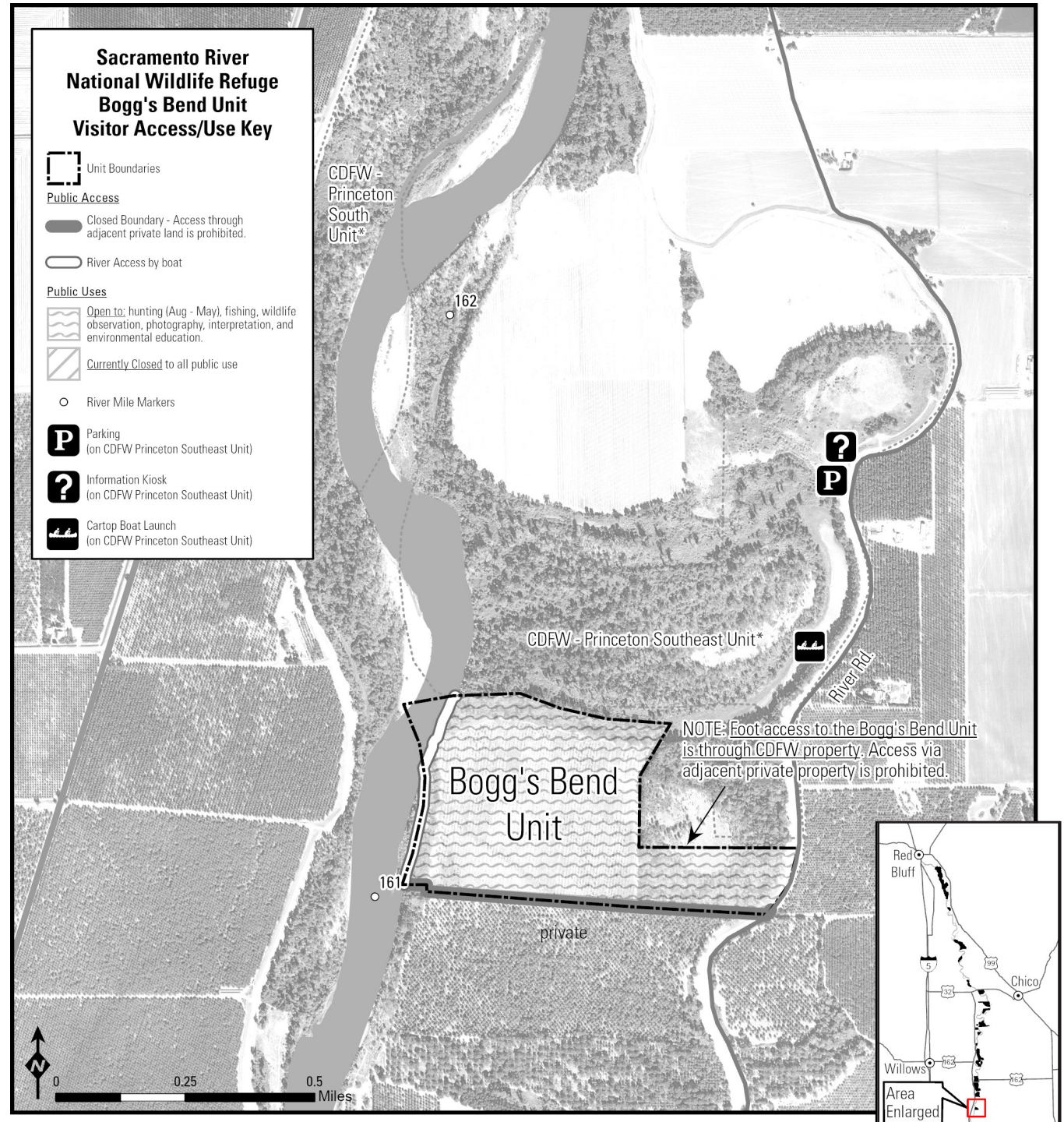


Motorized vehicles are prohibited. Mobility impaired visitors should consult refuge manager for allowed conveyances.

Be Prepared

This is a natural and wild area, be alert! You may encounter ticks, mosquitoes, wasps, yellow-jackets, bees, poison oak, stinging nettle, poison hemlock, rattlesnakes, feral pigs & mountain lions.

Bogg's Bend Unit Map & Access/Use Regulations



* California Department of Fish and Wildlife management boundaries represented on this map are for reference only. Contact CDFW for accurate boundaries and regulations.