

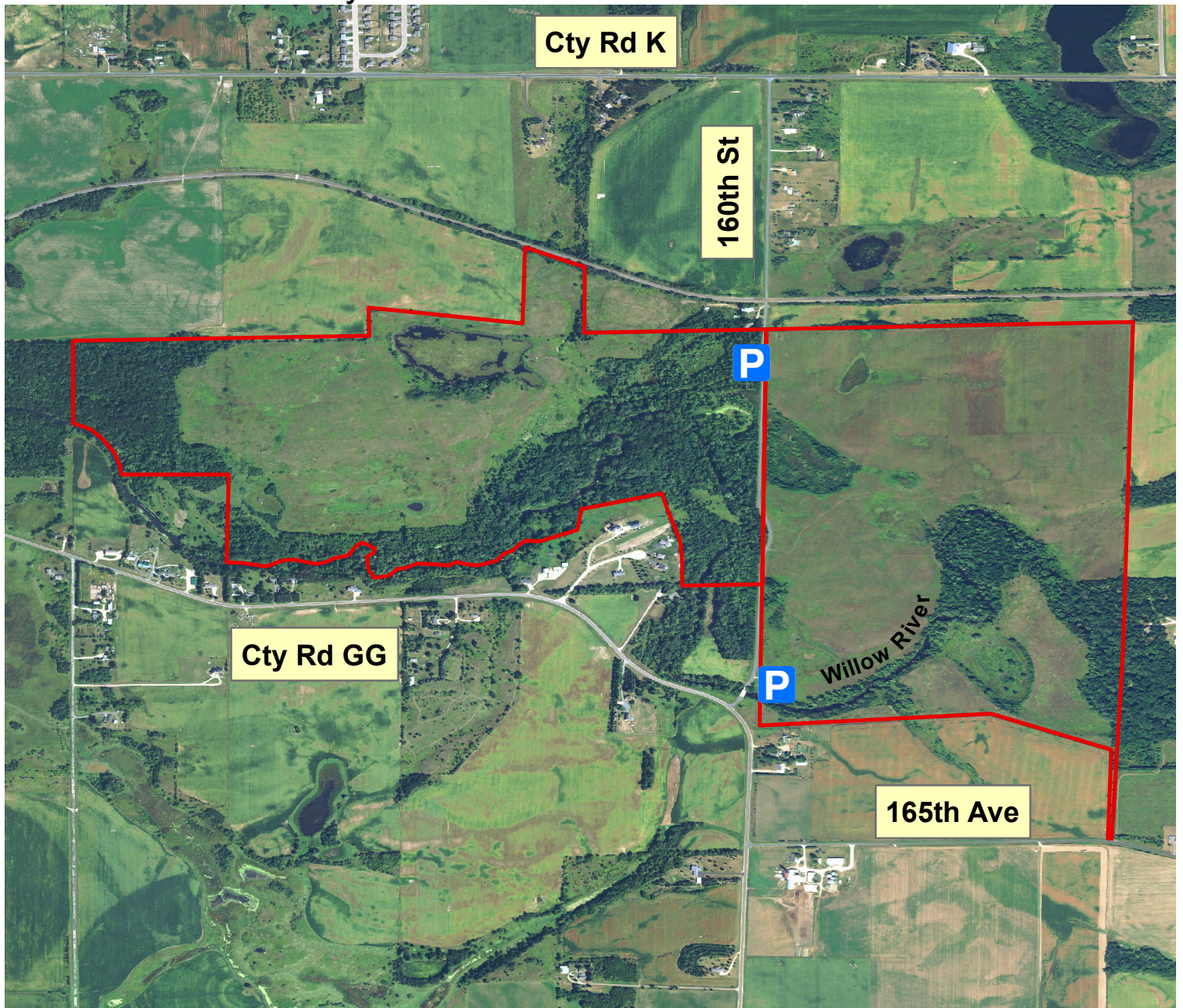


U.S. Fish and Wildlife Service

St. Croix Wetland Management District

Betterly WPA

Acres: 486



PARKING LOT LOCATIONS

1742 160th St
1683 160th St
New Richmond, WI

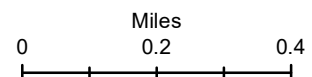
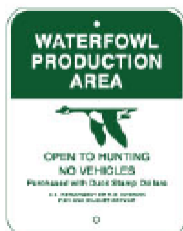
St. Croix County



Parking Lot



WPA Boundary



You can find additional information at:
(https://www.fws.gov/refuge/St_Croix_WMD/) or call (715-246-7784).
Boundaries shown are approximate only. Please adhere to all posted signs.