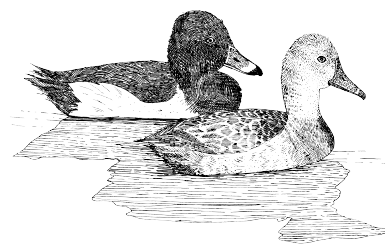


Bandon Marsh

National Wildlife Refuge

Waterfowl Hunting Regulations



Bandon Marsh National Wildlife Refuge

Public hunting on Bandon Marsh National Wildlife Refuge is permitted on 542 acres.

These regulations supplement the general regulations which govern hunting on wildlife refuge areas as set forth in Title 50, Code of Federal Regulations. In addition to Federal regulations, State laws and regulations are adopted and in effect unless they have been further restricted by Federal law or regulations. All State boating regulations will be enforced.

Hunting Days & Hours

Hunting on Ni-les'tun, east of Highway 101, is allowed only on Wednesday, Saturday and Sunday of each week. Hunting on Bandon Marsh, west of Highway 101, is allowed seven days per week. Hunters are permitted to enter either two hours before sunrise and remain until one hour after sunset.

Huntible Species

Geese, ducks, and coots may be hunted on both. Snipe hunting is allowed on Bandon Marsh only. No other wildlife species may be hunted on the refuge.

Blinds

Only portable blinds or blinds constructed of on-site dead vegetation or driftwood may be used.

Boats

Hunters accessing refuge lands by boat must do so from the Coquille River. Hunters may moor boats within the marsh while hunting, but boats landing on the bank of the Coquille River adjacent to Ni-les'tun are required to do so within the signed and designated location.

Closed Areas

These areas are closed to all public use and access at all times.

Retrieval Zones

These are refuge managed areas that are closed to all hunting. Setting decoys or blinds inside these zones is prohibited. The discharge of firearms in retrieval zones is prohibited. Hunters may enter posted retrieval zones to retrieve downed birds and when traveling to and from the hunting areas.

Dogs

Hunters may use dogs as an aid to retrieving waterfowl during the hunting season. Dogs must be in a vehicle or on a leash until they are within the designated hunt area unless they are retrieving downed game. Dogs must remain under control of the handler at all times.

Removal of Personal Property

It is the responsibility of hunters to remove all personal property including blinds, decoys, boats, shot shell hulls, and refuse from the refuge at the end of each day.

Prohibited Acts

The use or possession of alcoholic beverages while hunting is prohibited. No person may discharge any weapon or ammunition in the field that may not be legally used for taking waterfowl. Only federally approved non-toxic shot may be used or possessed while on the refuge. No target practice or sighting in rifles. No fires.

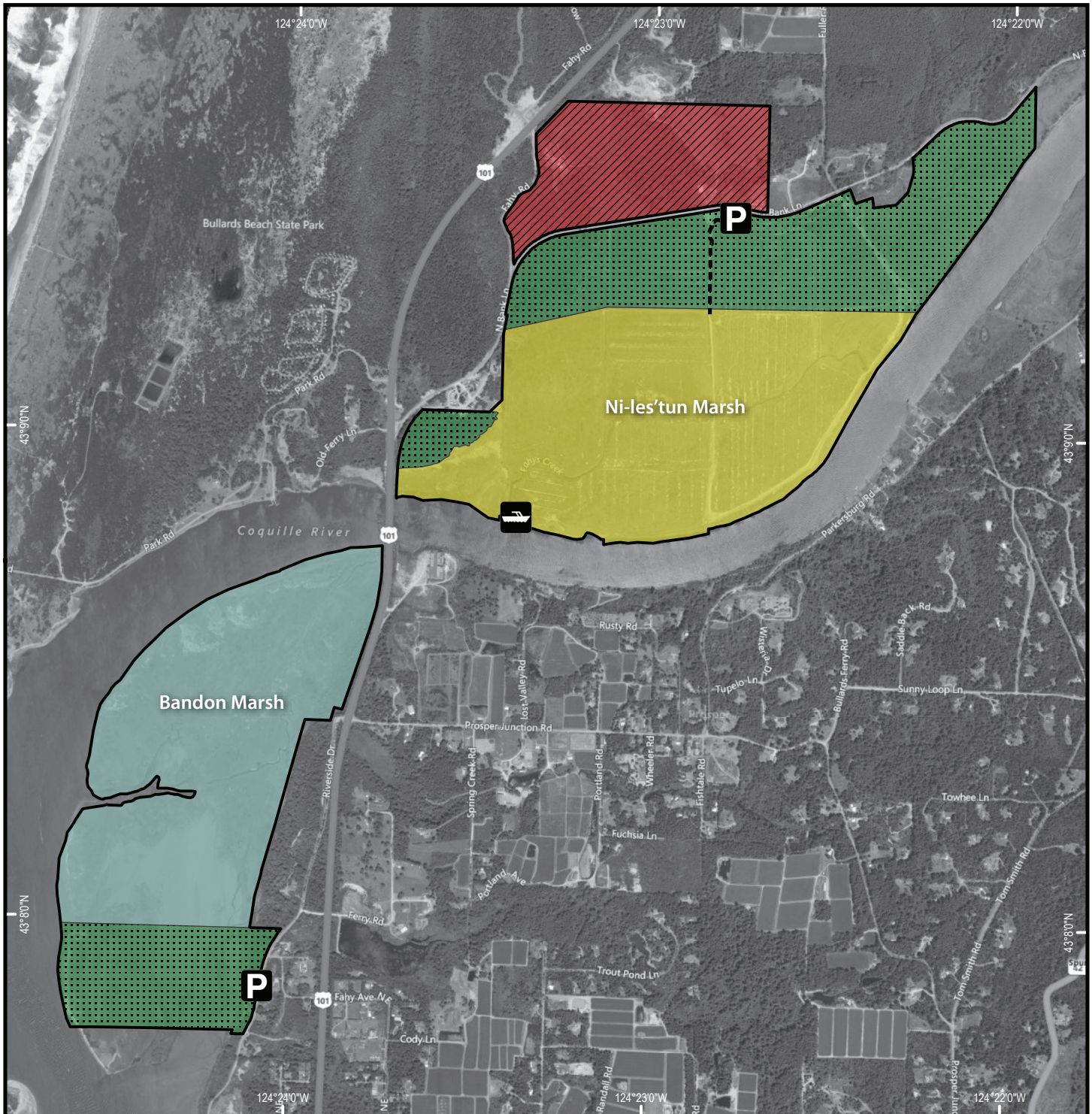
State Regulation Information

Additional information about season dates, harvest limits, and state and federal regulations can be found at: www.dfw.state.or.us/resources/hunting/waterfowl/.

Bandon Marsh National Wildlife Refuge
83673 North Bank Lane
Bandon, Oregon 97411
541/347 1470
oregoncoast@fws.gov
www.fws.gov/refuge/bandon_marsh



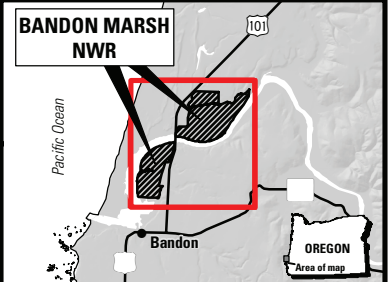
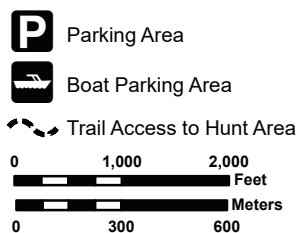
Bandon Marsh National Wildlife Refuge Waterfowl Hunt Area



LEGEND

- Refuge Managed Lands (Fee Title or Easement)
- Waterfowl Hunting Allowed 7 Days/Week
- Waterfowl Hunting Allowed 3 Days/Week (W, Sa, Su)
- Retrieval Zone/Area Closed to Hunting
- Area Closed to Hunting

Hunters must comply with Refuge and ODFW regulations.



Data Source: Refuge Boundaries from USFWS/R1; Roads from ESRI; Imagery from Bing Maps

While the U.S. Fish and Wildlife Service (USFWS) makes every effort to represent the data shown on this map as completely and accurately as possible, the USFWS gives no warranty, expressed or implied, as to the accuracy, reliability, or completeness of these data. In addition, the USFWS shall not be liable for improper or incorrect use of the data described and/or contained herein. Graphical representations provided by the use of this data do not represent any legal description of the data herein and are provided only as a general representation of the data.