

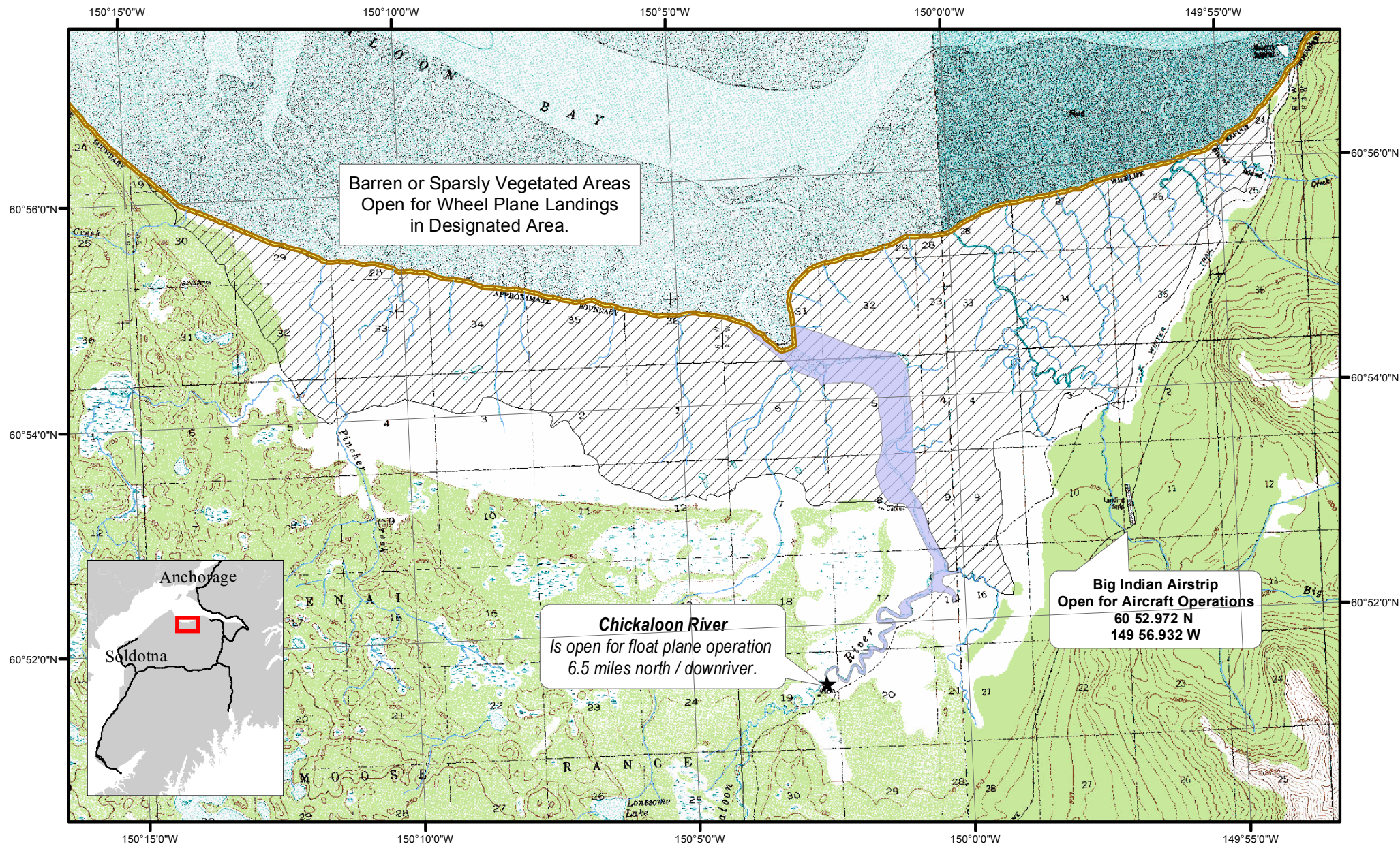


U.S. Fish & Wildlife Service

Kenai National Wildlife Refuge

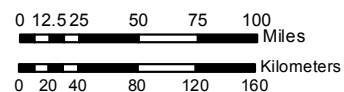
Soldotna, Alaska

Chickaloon Flats Aircraft Regulations



Produced in GIS Department
Soldotna, Alaska
Current to: 5/13/16
Meridian: Seward

Scale: 1:85,000



- Kenai National Wildlife Refuge
- River Mile 6.5
- Open to Seaplane Operations
- Barren/Sparsely Vegetated Area Open for Wheel Plane Landings



UTM ZONE 5N
NAD 83