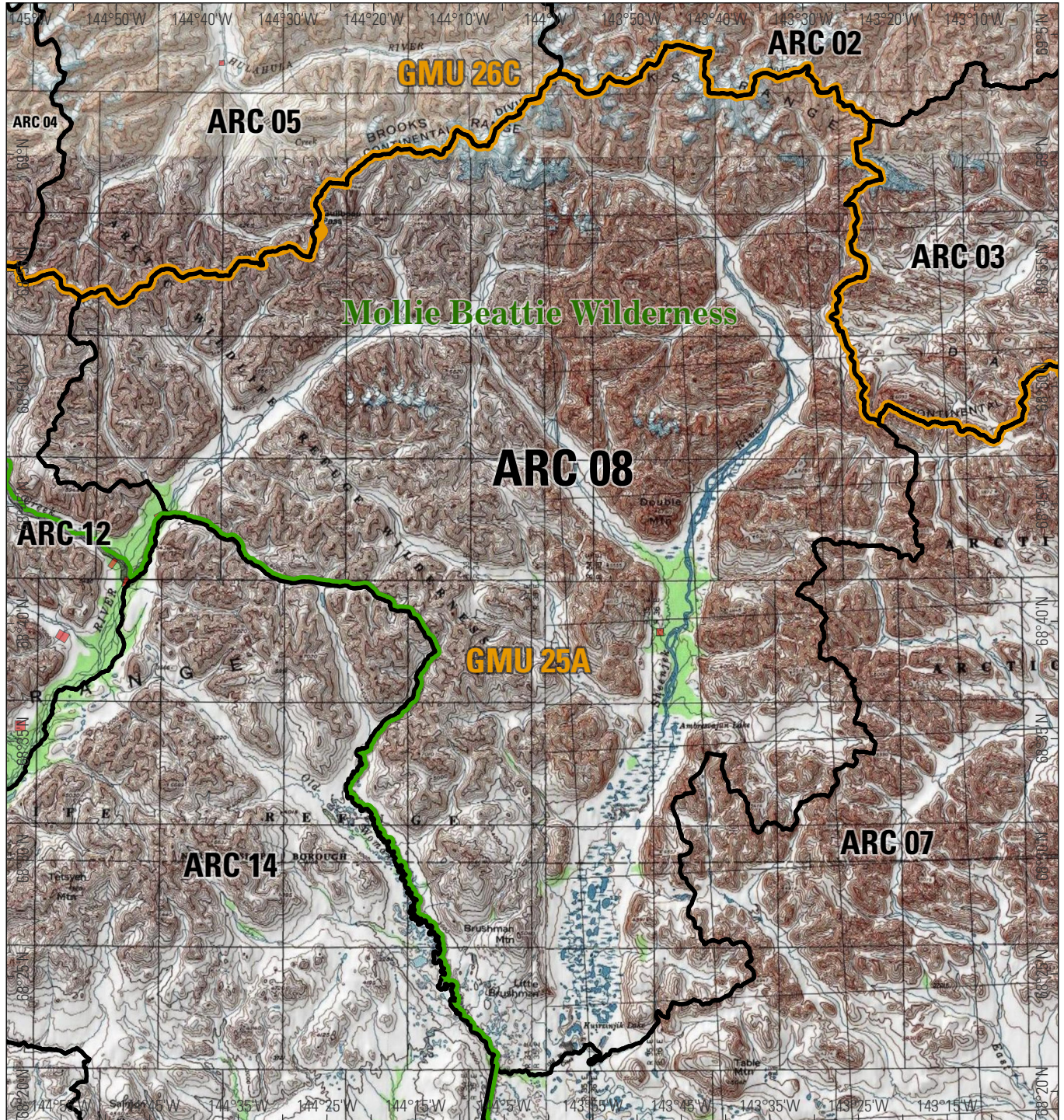




**U.S. Fish & Wildlife Service**  
**Arctic National Wildlife Refuge**  
**Alaska**

*FWS Guide Use Area*  
**ARC 08**




0 5 10 miles



0 5 10 km

Produced in the Division of Realty  
 Anchorage, AK  
 Base Map Source: ESRI, Inc.  
 Map Date: Dec. 26, 2023  
 Map ID #: 03-0305

**Management Units**

-  FWS Guide Use Area
-  State of Alaska Game Management Unit

**Land Status**

-  Native Allotment patented
-  Regional Corporation patented

**Map Location**

