

The Ernest F. Hollings ACE Basin National Wildlife Refuge is one of 556 National Wildlife Refuges. The primary objective of a National Wildlife Refuge is to provide habitat for the conservation and protection of all species of wildlife. The harvest of surplus animals is one tool used to manage wildlife populations at a level compatible with the environment, provide recreational opportunities, and permit the use of a valuable renewable resource.

The provisions listed below supplement the general regulations which govern hunting, fishing and public use on wildlife refuge areas set forth in Title 50, Code of Federal Regulations. When permitted, hunting, fishing and other public uses will be in accordance with applicable state laws unless otherwise listed. Only the hunting seasons designated in this brochure are permitted on Ernest F. Hollings ACE Basin National Wildlife Refuge.

### General Provisions

By law, national wildlife refuges are restricted from all public use activities unless permitted. Hunting, fishing or other public use activities are permitted on most areas of the refuge. Contact the Refuge Manager for current regulations and authorized activities when visiting the refuge.

- The refuge is open every day from legal sunrise until legal sunset.
- Entry into Ernest F. Hollings ACE Basin National Wildlife Refuge constitutes consent to an inspection of persons and their licenses, permits, vehicles, game bags, creel and all hunting and fishing equipment.
- Persons may only use (discharge) firearms in accordance with refuge regulations (50 CFR 27.42) and specific refuge regulations (50 CFR 32).
- All pets must be restrained by a leash and under the control of the owner or responsible party at all times. Pets are limited to dogs and cats.
- Horses and horseback riding is prohibited.
- Possession or use of any alcoholic beverages is prohibited.
- Camping and fires are prohibited.
- Littering is prohibited.

- Vehicles may be parked alongside roads in a manner that will not block gates or fire lanes or interfere with the normal flow of traffic.
- The speed limit on all refuge roads is 15 MPH unless posted otherwise.
- Vehicle travel is limited to established roads. Except on roads marked as closed, vehicle travel is prohibited.
- ATV's, UTV's, golf carts, or any other off-road vehicles are prohibited.

### General Hunting Regulations

Hunting will be in accordance with applicable State regulations and the following special refuge regulations.

- Public hunting of white-tailed deer, feral hogs, and waterfowl is permitted on portions of the Ernest F. Hollings ACE Basin National Wildlife Refuge only in those areas marked on the maps within this brochure and only during the time periods indicated.
- This brochure must be signed and carried at all times while hunting or fishing.
- The refuge is open for walk-in scouting all year between legal sunrise and legal sunset. No vehicles, hunting weapons, or dogs are allowed for scouting.
- Access into the Combahee Unit and Barrelville tract of the Edisto Unit of the refuge will be walk-in only.
- Use or possession of electronic game calls is prohibited.
- Use or possession of remote photography, videography, trail monitoring/counting devices, or any other remote devices is prohibited.
- Hunting firearms being transported in vehicles and boats during refuge hunts must be unloaded and cased. A loaded firearm is defined as ammunition in the chamber or magazine, or percussion caps on muzzleloaders.
- Hunting within 100 feet of any road, trail or refuge boundary as indicated by the hunt maps on this brochure is prohibited, except as specified during mobility impaired hunts.
- No hunting within 500 feet of a check station.
- It is unlawful to drive a nail, screw, spike or other metal object into a tree or to hunt from a tree into which such an object has been driven.

- Destroying or cutting vegetation is prohibited. The possession of axes, saws, machetes, of other tools used for cutting vegetation is not permitted on the refuge while scouting or hunting.
- Baiting or hunting in the vicinity of bait is prohibited. Baiting means the placing, depositing, exposing, distributing, or scattering of shelled, shucked, or unshucked corn, wheat, or other grains, other food stuffs, or any other consumable attractant, including salt and mineral blocks, to constitute an attraction, lure, or enticement to, on, or over any area.
- Any alligator hunting activities are prohibited.
- All hunters under the age of 16 must:
- Have successfully completed a state-approved hunter education course in order to participate in any refuge hunt.
- Must be supervised by an adult at least 21 years of age. The adult must be in sight and normal voice contact of the youth. An adult may supervise only one youth under 16 years of age.

### Specific Hunting Regulations

#### White-tailed Deer and Feral Hog Hunts

- Hunters may enter the refuge at 5 am and must leave the refuge no later than one hour after sunset only on the days of the hunts.
- Legal Hunting Weapons: Long, recurve, or compound bows, crossbows, and muzzle loading (black powder) rifle only.
- All other weapons including handguns, rim-fire and center-fire rifles, poison arrow tips, and exploding arrow tips are prohibited\*.
- \*Special Note: Center-fire rifles and ground blinds are permitted for use during the Mobility Impaired Hunt only.
- During muzzle loader hunts and the mobility impaired hunts, hunters are required to wear at all times an outer garment visible above the waist which contains a minimum of 500 square inches of solid fluorescent orange material. Camouflage orange material or a hat along does not meet this requirement.
- Hunters must use an elevated stand to hunt deer and feral hogs.
- A safety belt or harness must be utilized while using a hunting stand.

- Portable hunting stands are allowed only on the days of the hunts. Only one tree stand per hunter is allowed and must be marked with the hunter's SC DNR customer number. The use of boot attached tree climbing spikes, nails, screws or bolts to attach a stand to a tree is prohibited.
- Flagging may be used only at the edge of roads and trails and at the tree in which a stand is placed. Clothes pins with reflective tape can be used to mark the path to a tree. All markings and flagging must be marked with hunter's SC DNR customer number and must be removed at the end of the hunt. Any flagging or pins without customer number will be removed immediately.
- Deer and feral hog hunting with the use of trailing or tracking dogs is prohibited.
- All deer taken during any hunt **must** be checked at the designated check stations immediately after recovery.
- No person shall possess or use any substance or material that contains or purports to contain any excretion collected from a cervid (deer) including urine, feces, blood, gland oil, or other body fluid for the purpose of taking, attracting, or scouting any wild animal in SC. This does not prohibit the use of synthetic products or substances collected by a hunter from deer legally harvested in SC. (Reg. 123-54).

- Deer must be tagged with hunter's state issued tags in accordance with state law.

### Waterfowl Hunts

- Waterfowl hunts will be for ducks, geese, and coots only and will be allowed only until noon each day during State season.
- Decoys and portable blinds must be removed at the end of each day's hunt (noon). Permanent blinds are not permitted.
- Only federally approved nontoxic shot may be used. Possession of lead shot is prohibited.
- You may access the hunt areas only by boat.

### Daily Bag Limit

- **Two** deer total (antlerless, antlered, or a combination of the two); antlered deer must be at least three points on one side. An antlerless deer is defined as a deer with no antlers or an antlered deer with less than two inches of antler visible above the hairline. A point is defined as an antlered projection of at least one inch or more in length.

- No size or bag limit for feral hogs which may only be taken during refuge deer hunts.
- Waterfowl bag limits will comply with State regulations.

### Specific Fishing Regulations

Fishing will be in accordance with applicable State regulations and the following special refuge regulations.

- Public fishing is permitted on portions of the Ernest F. Hollings ACE Basin National Wildlife Refuge only in those areas marked on the maps within this brochure and only during the time periods indicated.
- Impounded waters contained within dikes and levees are opened for fishing seasonally from legal sunrise to legal sunset in the Beaufort County portion of the refuge only.
- Walk-in access only, no vehicles allowed
- Boat use is not allowed within seasonally opened Refuge waters. Only bank fishing is permitted.
- Only attended hook and line fishing is permitted. Use of nets, trot-lines, set-lines, baskets, yo-yo's, traps, jug-lines, spears, gigs, and stupefying substances are prohibited.

### Youth Turkey Hunts

- For more information contact the refuge office or website.

### For Additional Information

Contact refuge personnel at 843/889 3084 or write to:  
Ernest F. Hollings ACE Basin NWR  
P. O. Box 848  
Hollywood, SC 29449

Additional copies of these regulations may be downloaded at: <http://acebasin.fws.gov>

## 2022 - 2023 Seasons

### Hunting

#### Combahee Unit

October 6-7 Archery  
October 17-18 Muzzleloader  
October 24-25 Archery

#### Edisto Unit

##### Grove Tract

October 3-4 Archery  
October 13-14 Muzzleloader  
October 20-21 Archery

##### Barrelville Tract

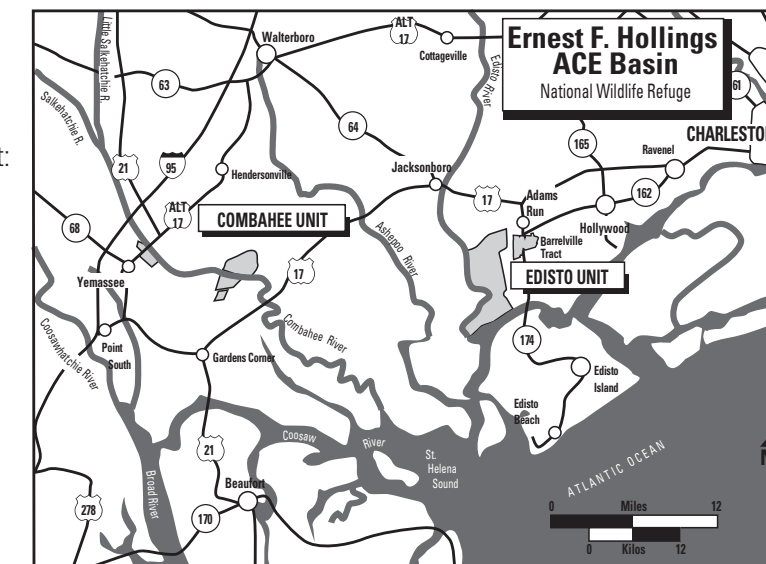
October 3-4 Archery  
October 13-14 Archery  
October 20-21 Archery

#### Mobility Impaired

November 2-3

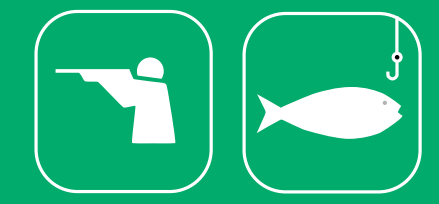
## Fishing

April 1 - August 31



# Ernest F. Hollings ACE Basin

National Wildlife Refuge Hunting and Fishing Regulations 2022 - 2023



## Ernest F. Hollings ACE Basin National Wildlife Refuge General Hunt Permit 2022-2023

I have read and understand these refuge regulations. This permit and attached regulations must be carried at all times.

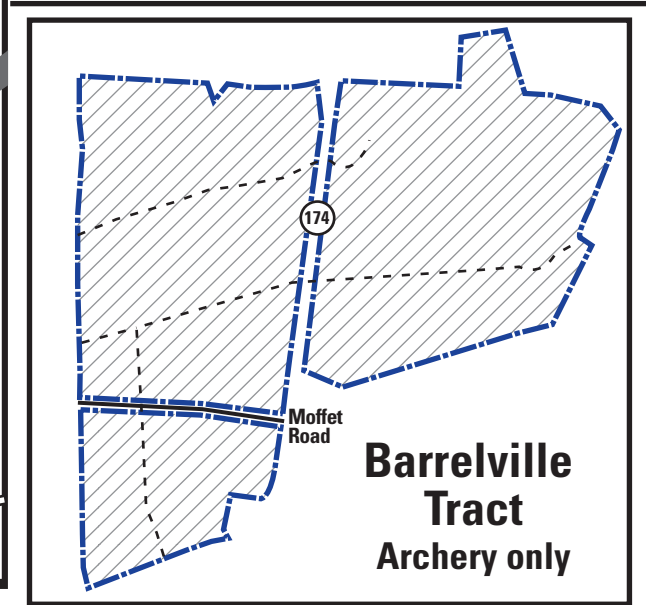
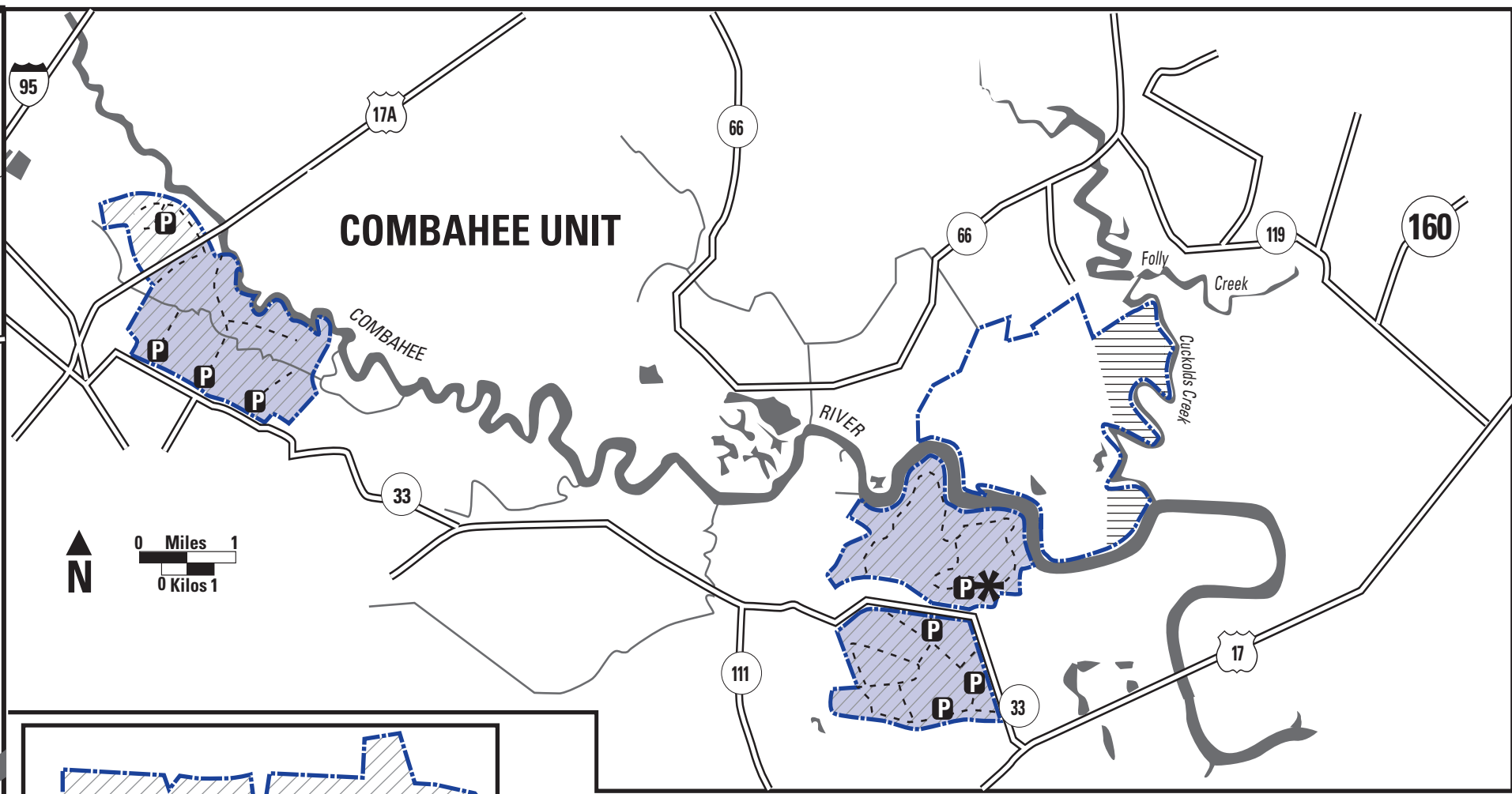
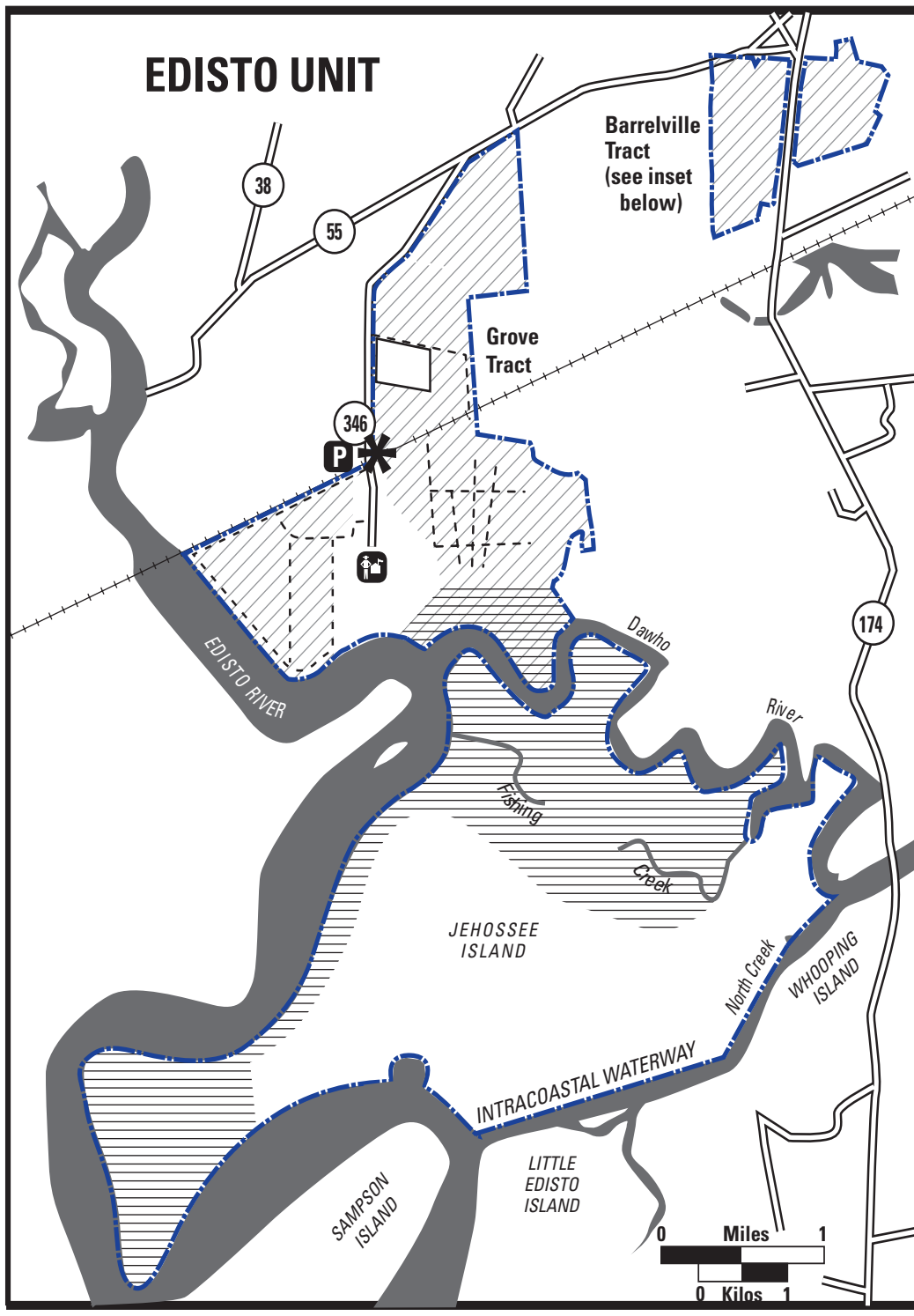
Name: \_\_\_\_\_

Address: \_\_\_\_\_

\_\_\_\_\_

Date: \_\_\_\_\_

Signed: \_\_\_\_\_



### Legend

|   |   |
|---|---|
| Refuge Boundary   | Hunter Access Roads, open only during refuge deer hunts |
| Deer Hunting Area   | Trails  |
| Waterfowl Hunting Area  | Check Station   |
| Waterfowl & Deer Hunting  | Refuge Headquarters                                     |
| Private Property or Area Closed to Hunting Unless Otherwise Indicated | Parking Areas   |
| Fishing Area  |   |

Ernest F. Hollings ACE Basin  
National Wildlife Refuge  
P.O. Box 848  
Hollywood, SC 29449  
843/889 3084  
<http://acebasin.fws.gov>  
U.S. Fish & Wildlife Service  
1 800/344 WILD  
September 2022

