

# National Elk Refuge

## Elk Hunting

### Information and Regulations

#### 1. Who manages hunting on the National Elk Refuge?

Hunting on the National Elk Refuge (NER, Refuge) is managed through a cooperative effort between the NER, Grand Teton National Park, and Wyoming Game & Fish Department (WGFD), with the goal of achieving optimum herd size. The NER posts information and updates related to the Refuge and Refuge hunting programs on its website:

[www.fws.gov/refuge/national\\_elk\\_refuge](http://www.fws.gov/refuge/national_elk_refuge)

#### 2. What must I have while hunting elk on the Refuge?

- NER permit for elk hunting and WGFD elk hunting license
- Note: The applicant must possess a full price license to apply for the Any Elk and Youth Hunt periods.
- WGFD Conservation Stamp (if required by WGFD)
- WGFD Elk Special Management Permit
- Hunter Safety Certificate (if required by WGFD)

#### 3. How do I get a permit for hunting elk on the Refuge?

The application process for a NER permit for elk hunting is done online via the WGFD Access Yes! Hunter Management Area Program.

#### 4. What Refuge-specific laws regulate hunting on the Refuge?

In addition to all Federal and WGFD requirements, the following Refuge specific regulations are enforced. Hunters must be knowledgeable of all regulations prior to hunting as violations may result in forfeiture of the animal, criminal penalties, and permit revocation.

##### *Hunting activities prohibited on the NER:*

- Intentional herding or harassment of wildlife.
- Discharging firearms other than for lawful hunting (i.e. target shooting and sighting in).
- Indiscriminant shooting, shooting multiple times into a running herd, or injuring multiple animals.
- Shooting from parking areas or public roads.
- Possessing more than seven cartridges per license per day.
- Interfering with or harassing other hunters.
- Using decoys outside of the Archery Only Area or using blinds that completely obstruct visible fluorescent orange or fluorescent pink garment.

##### *Transportation activities prohibited on the Refuge:*

- Driving off designated roads.
- Stopping or unloading hunters along Refuge roads.
- Parking outside of designated hunt parking lots.
- Overnight camping or parking.
- Using bicycles off designated roads
- ATVs are allowed on public roads but must be registered, insured, and operated by a licensed driver. ATVs and snowmobiles are not allowed on Refuge retrieval roads.
- Horses used for hunting are restricted to the Any Weapon Area and new Archery Area north of Flat Creek (including West Hunt Lot) as depicted on the hunt map. Horses are allowed Refuge-wide for retrieval purposes.

##### *Other activities illegal on the NER:*

- Collecting natural or cultural resources, including but not limited to antlers, skulls, and artifacts.
- Possession or use of alcoholic beverages.
- Possession of non-certified weed-free hay.
- Starting or maintaining any fires.



#### 10. What guide and retrieval companies are permitted to operate on the Refuge?

Commercial guiding and retrieval services may be available. Double Diamond Tag-n-Drag is the only business currently authorized to operate on the NER and can be reached by phone at 307 / 248 1490.

#### 11. Does the Refuge allow Wyoming hunter assistance / disabled hunter programs?

Hunters enrolled in the WGFD Hunter Mentor Program may receive a Refuge permit.

The NER encourages hunters with disabilities to participate in the hunt program and offers reasonable accommodation for the activity.

Hunters who have both a WGFD Disabled Hunter Permit and a Refuge hunting permit are eligible to reserve one of two designated hunt sites. Reservations must be made at the Refuge Administrative Offices at 675 E. Broadway in Jackson, WY. The reservation is limited to a 4-day period. The WGFD Disabled Hunter Companion Permit is also valid on the Refuge. Contact the WGFD for further information on these programs.

#### 12. What do I need to know about biological testing of elk?

Hunters are now required to participate in a Chronic Wasting Disease sampling program by depositing the animal's head at a collection box or allowing a biologist to collect samples in the field. Hunters are advised to take personal safety precautions by wearing rubber gloves while field dressing. All ear tags and

radio collars from harvested animals must be returned to the NER or WGFD, Jackson Regional Office.

#### 13. What do I need to know about the Youth Only Hunt?

The NER Youth Only Hunt will occur Thursday through Saturday of Thanksgiving weekend. For those three days, full-priced youth license holders who have applied for and drawn a Refuge permit for Hunt Period 8 may take one bull elk. Youth hunters may take two additional cow/calf elk with additional licenses.

The Youth Hunter Development Program on the NER provides opportunities for youth mentoring when the adult has drawn a permit and wishes to hunt with a youth that has not drawn a permit. This program does not allow an adult to hunt when the youth hunters draws a permit but the adult did not. For more information, please call the NER Hunt Information Line.

Per Wyoming Statute, any hunter that is 12 or 13 years old shall at all times be accompanied by an adult who possesses and can exhibit a hunter safety certificate, or who currently holds or has been issued a Wyoming big game hunting license within the last five years. If the person who is accompanying the hunter under the age of 14 years old is not the parent or guardian of the hunter, the hunter shall have in their possession a permission slip signed by their parent or guardian allowing them to hunt under supervision. Each accompanying adult shall supervise only one hunter under the age of 14 years.

**National Elk Refuge (NER)  
Hunt Information Line  
307 / 201 5437**

**National Elk Refuge Administrative Office  
(PO Box 510) 675 E. Broadway Avenue  
Jackson, WY 83001  
307 / 733 9212  
[www.fws.gov/refuge/national\\_elk\\_refuge/](http://www.fws.gov/refuge/national_elk_refuge/)**

**Wyoming Game & Fish Department  
Jackson Office  
(PO Box 67) 420 North Cache Street  
Jackson, WY 83001  
307 / 733 2321**

**Jackson Hole & Greater Yellowstone  
Visitor Center  
532 North Cache Street  
Jackson, WY 83001**

**Teton Interagency Dispatch  
307 / 739 3301**

**In an emergency, dial 911  
For State relay service TTY / Voice: 711**

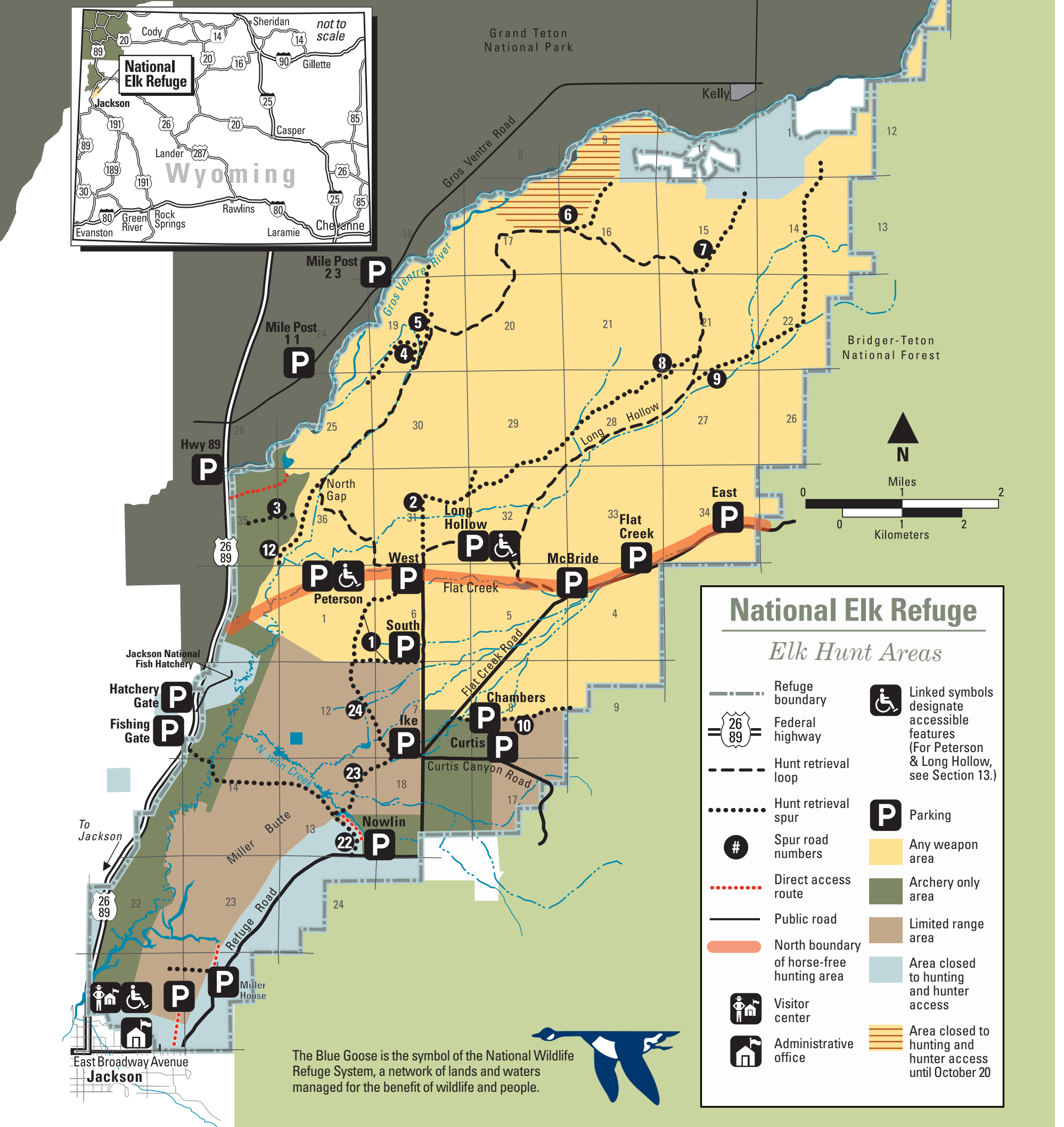
**U.S. Fish & Wildlife Service  
[www.fws.gov](http://www.fws.gov)**

**June 2021**



#### Accessibility

Equal opportunity to participate in and benefit from programs and activities of the U.S. Fish and Wildlife Service is available to all individuals regardless of physical or mental ability. For more information please contact the U.S. Department of the Interior, Office of Equal Opportunity, [www.doi.gov/accessibility](http://www.doi.gov/accessibility).



The Blue Goose is the symbol of the National Wildlife Refuge System, a network of lands and waters managed for the benefit of wildlife and people.

**5. What are the requirements for animal retrieval?**

- Following harvest, elk hunters may use retrieval roads starting at 10:00 am. If retrieving after dark, hunters should notify Refuge staff by leaving a message on the NER Hunt Information Line at 307 / 201 5437.
- Hunters may not leave animal parts, including gut piles and carcasses, within 100 feet of parking areas.
- No game retrieval is allowed within Grand Teton National Park. This includes retrieval to Gros Ventre Road parking areas at Milepost 1.1 and 2.3 or across Highway 89. Hunters must bring their vehicle inside the gate to load the animal at the Highway 89 parking lot.

**6. What hunting areas can I hunt, and what are their restrictions?**

Elk hunting is allowed in three hunting areas (see map). All hunt areas must be accessed from designated parking lots or direct access routes that correspond to the legal hunting method allowed in that area. All Refuge hunting areas have specific restrictions.

*Archery Only Area (Green on map)*

Hunters must carry and are restricted to possessing only a bow or crossbow legal for taking elk as defined by the WGFD. Hunters must be at least 200 yards from all residences and the National Fish Hatchery. After November 1, the Archery Hunting Area along Highway 89 may be accessed by either the Fishing or Hatchery gate parking areas.

*Limited Range Area (Brown on map)*

Hunters must carry and are restricted to possessing only limited range weapons, including handguns, muzzle loading rifles, shotguns with slugs, or archery equipment legal for taking elk as defined by the WGFD.

Handguns are further restricted to straight-walled cartridges with a barrel length no longer than 12 inches.

*Any Weapon Area (Yellow on map)*

Hunters may hunt with any legal weapon for taking elk as defined by the WGFD.

**7. What should I do before I pursue an injured animal off or onto the Refuge?**

Prior to December 1, if an injured animal crosses from the National Forest onto the Refuge, or if retrieval would be more efficient through the Refuge, hunters should call the NER Hunt Information Line and leave a message detailing their situation and plan for recovery. Following this notice, the hunter may pursue or retrieve the animal as planned, giving consideration to limiting any resource damage. Beginning December 1, Forest Service lands adjacent to the NER are closed to all human presence per Winter Travel Restrictions. If the injured animal crosses into Grand Teton National Park, the hunter must immediately notify Teton Interagency Dispatch at 307 / 739 3301.

**8. What regulations apply to the non-hunting assistants?**

- Elk hunters are allowed one assistant and must ensure that assistant is compliant with all Refuge regulations. Youth hunters are allowed additional assistants.

- Assistants must stay within 50 yards of the permitted hunter, unless retrieving.
- Assistants must wear a florescent orange or pink garment that is visible from 360 degrees, the same as required for the hunter, by state law.

**9. What else do I need to know?**

- Hunters may fill up to three WGFD elk licenses on a single NER permit.
- Prior to the start date of their hunt period, hunters may only access Refuge areas open to the general public.
- Hunters are only allowed in hunt areas when they have a Refuge permit and a valid matching license.
- Refuge roads or parking areas may be closed or inaccessible due to inclement weather or management decisions.
- Harvest Reports are included with every Refuge permit and must be completed for each hunt period drawn whether successful or not. Directions for submission are on the Harvest Report.
- Use of non-lead ammunition is encouraged.
- During high fire danger, a fire extinguisher and shovel are recommended.
- Grizzly bears frequent the Refuge. Carrying bear spray is recommended.