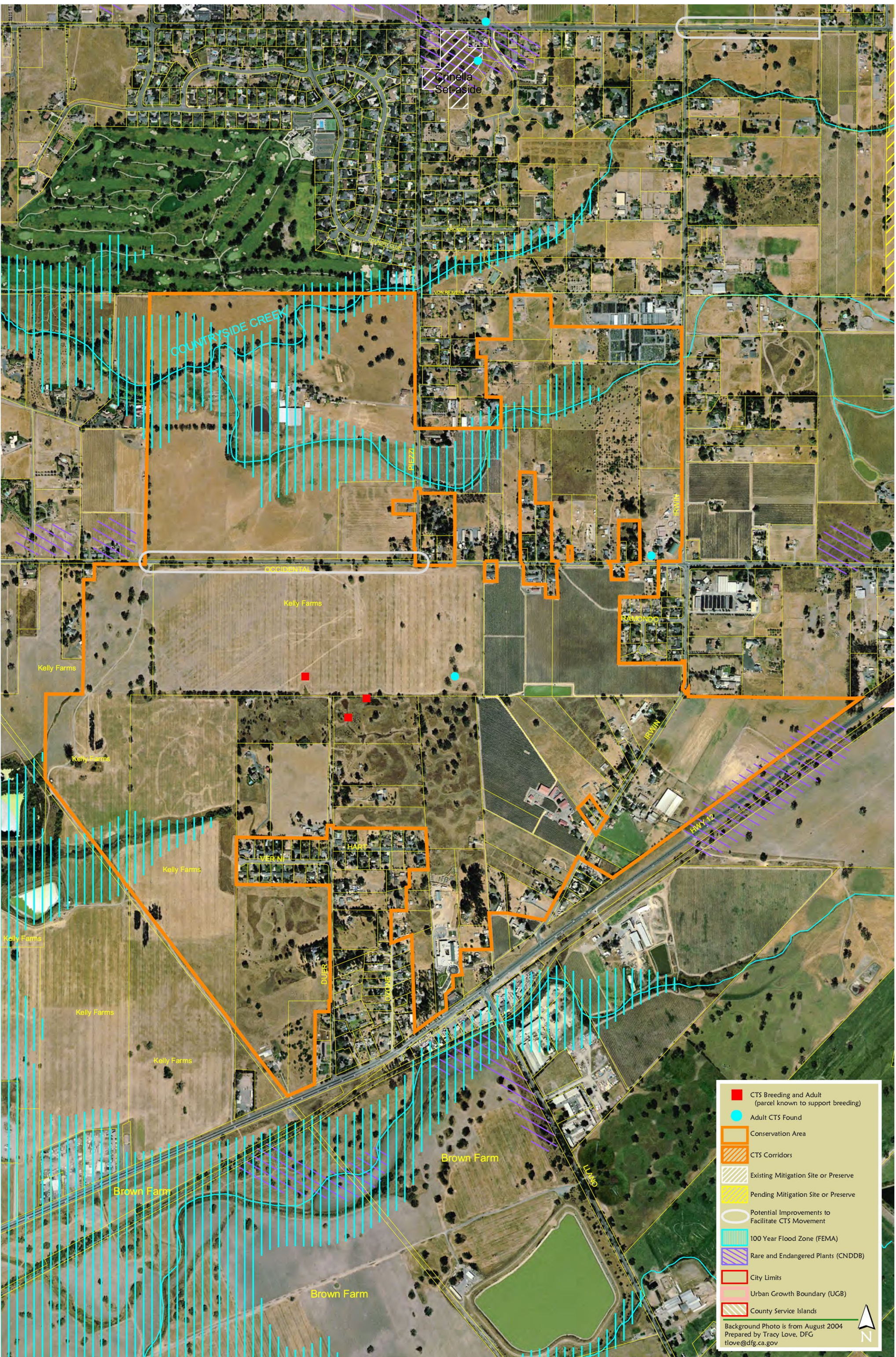


Figure 6. Kelly Conservation Area Map



- CTS Breeding and Adult (parcel known to support breeding)
- Adult CTS Found
- Conservation Area
- CTS Corridors
- Existing Mitigation Site or Preserve
- Pending Mitigation Site or Preserve
- Potential Improvements to Facilitate CTS Movement
- 100 Year Flood Zone (FEMA)
- Rare and Endangered Plants (CNDDB)
- City Limits
- Urban Growth Boundary (UGB)
- County Service Islands

Background Photo is from August 2004
 Prepared by Tracy Love, DFG
 tlove@dfg.ca.gov

Figure 6 - Santa Rosa Plain Conservation Strategy - Kelly Conservation Area - 11/25/05



Figure 7. Llano Conservation Area Map

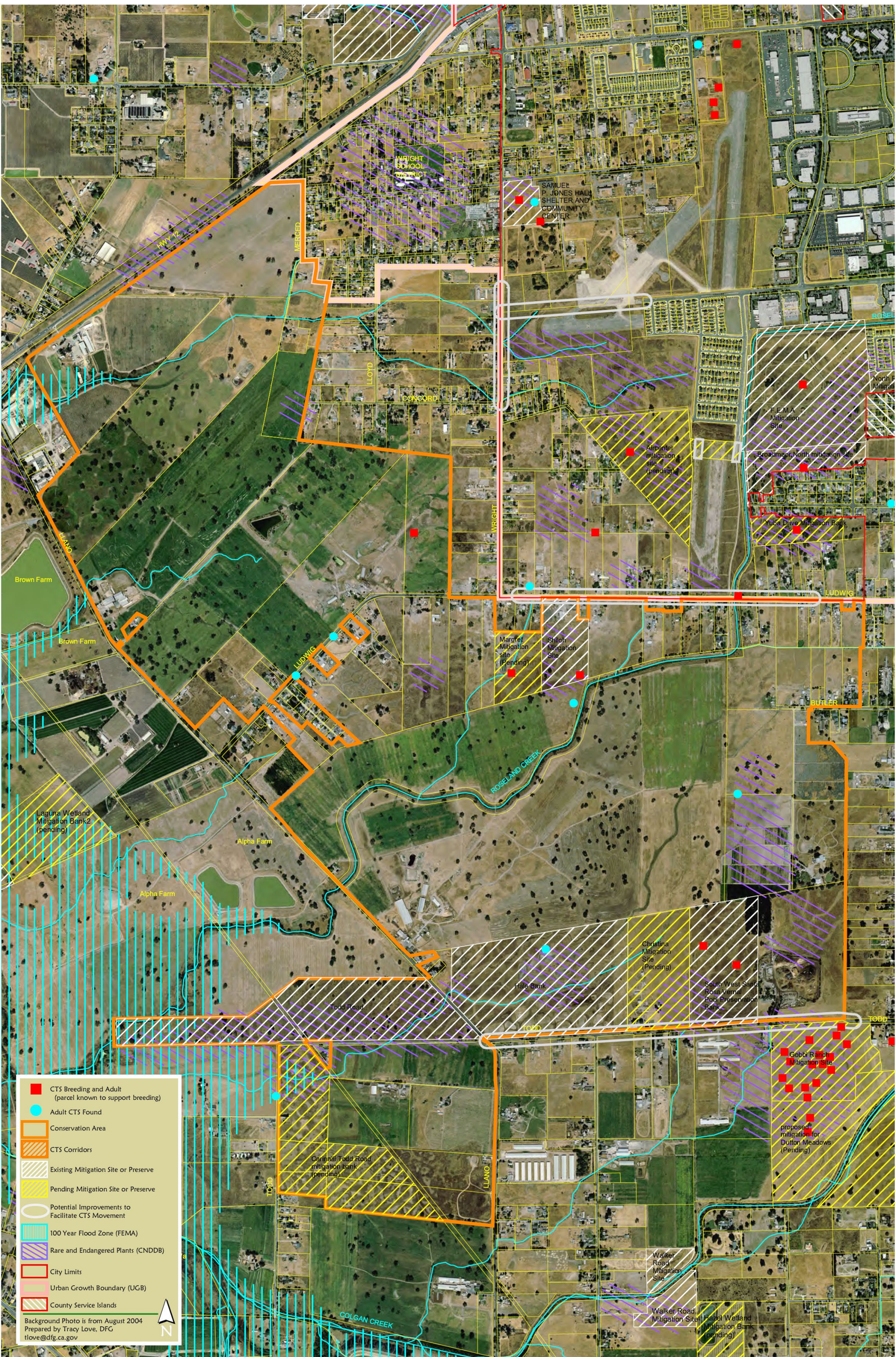
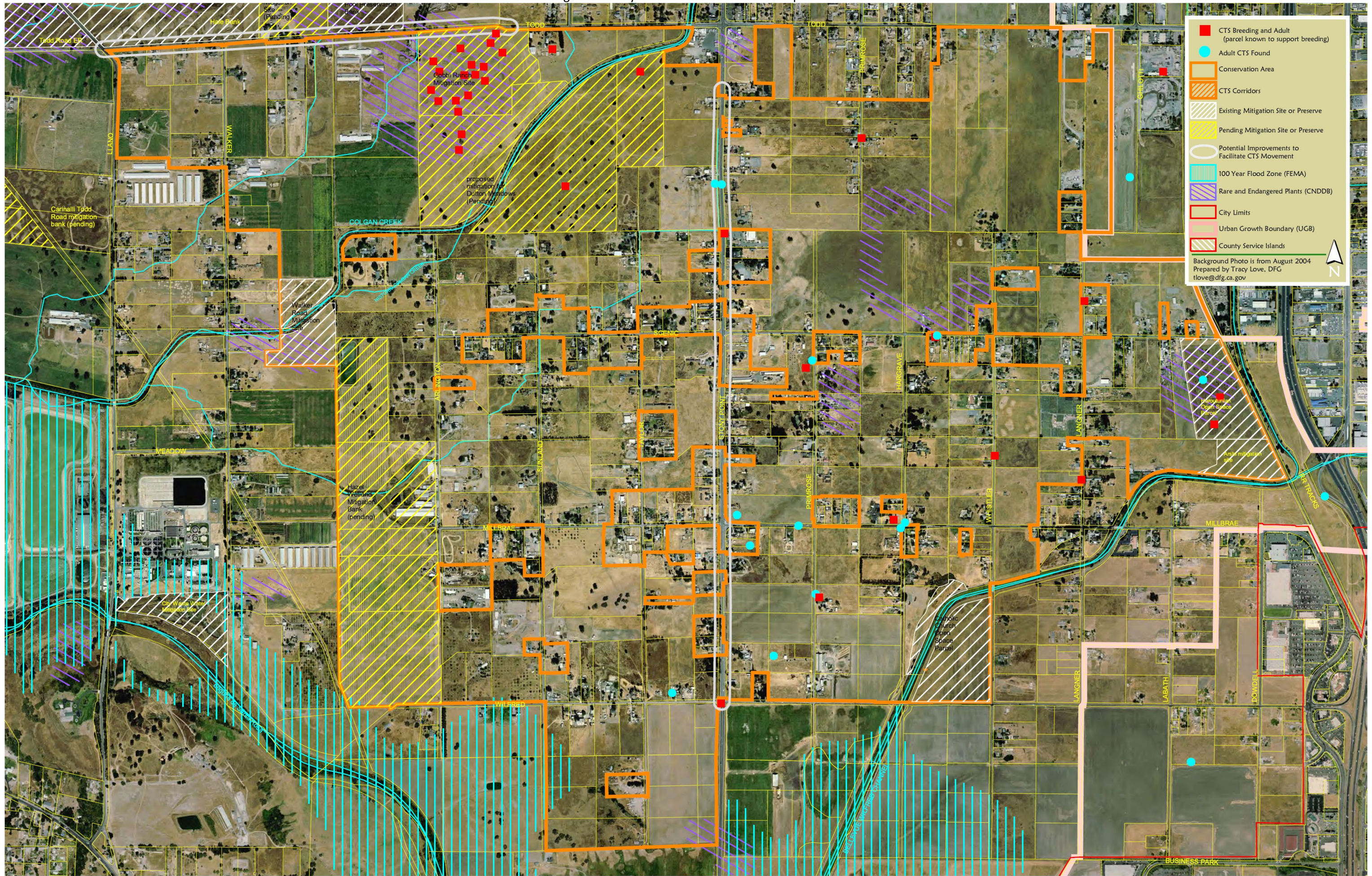


Figure 7 - Santa Rosa Plain Conservation Strategy - Llano Conservation Area - 11/25/05

Figure 8. Stony Point Conservation Area Map



■ CTC Breeding and Adult (parcel known to support breeding)
● Adult CTC Found
 Conservation Area
 CTC Corridors
 Existing Mitigation Site or Preserve
 Pending Mitigation Site or Preserve
 Potential Improvements to Facilitate CTS Movement
 100 Year Flood Zone (FEMA)
 Rare and Endangered Plants (CNDRB)
 City Limits
 Urban Growth Boundary (UGB)
 County Service Islands

Background Photo is from August 2004
 Prepared by Tracy Love, DFG
 tlove@dfg.ca.gov

Figure 8 - Santa Rosa Plain Conservation Strategy - Stony Point Conservation Area - 11/25/05

Figure 9. Northwest Cotati Conservation Area Map

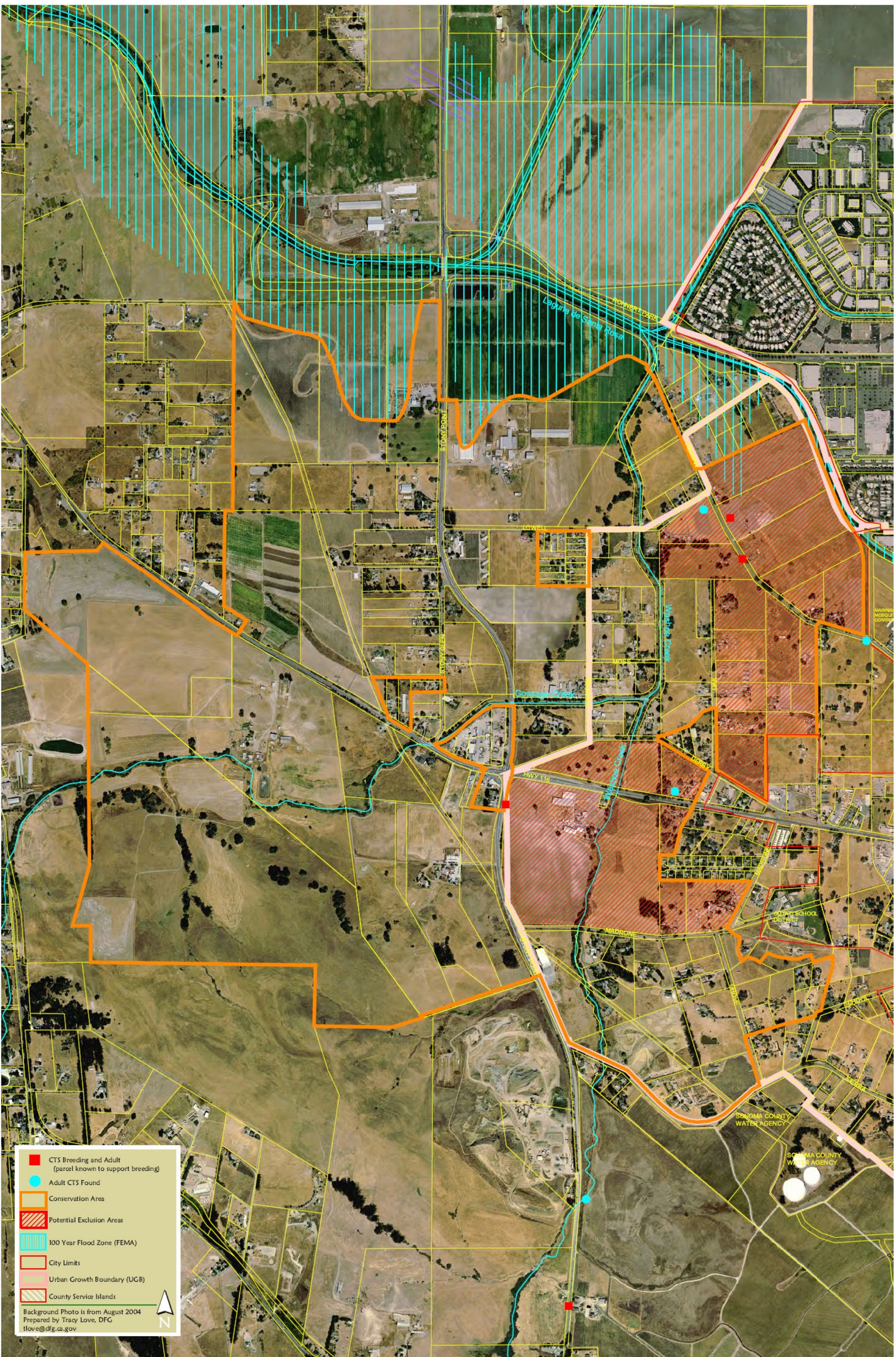


Figure 9 - Santa Rosa Plain Conservation Strategy - Northwest Cotati Conservation Area - 11/25/05

0 500 1000 1500 2000 Feet

Figure 10. Southeast Cotati Conservation Area Map

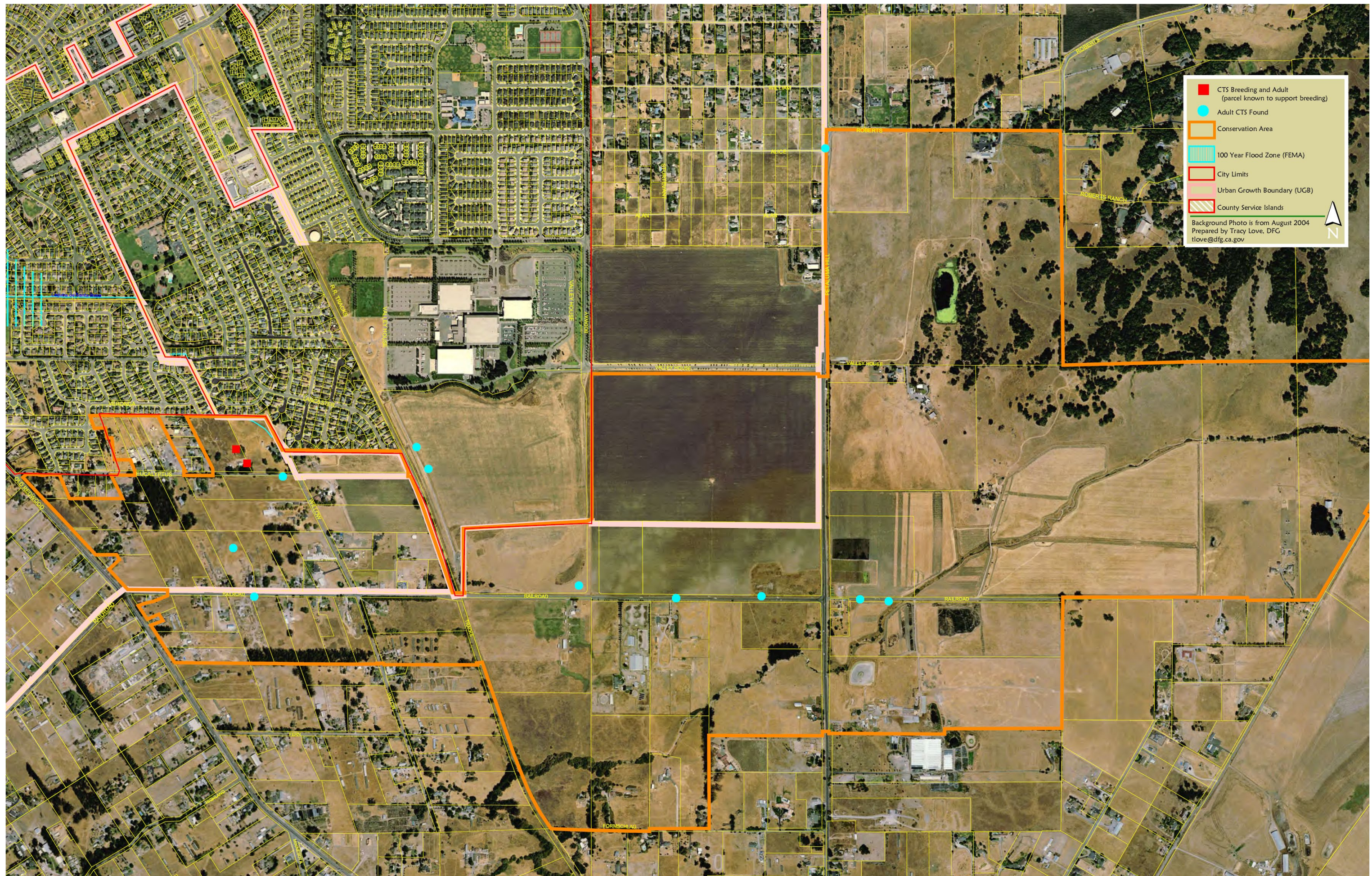


Figure 10 - Santa Rosa Plain Conservation Strategy - Southeast Cotati Conservation Area - 11/25/05

Figure 11. Southwest Cotati Conservation Area Map

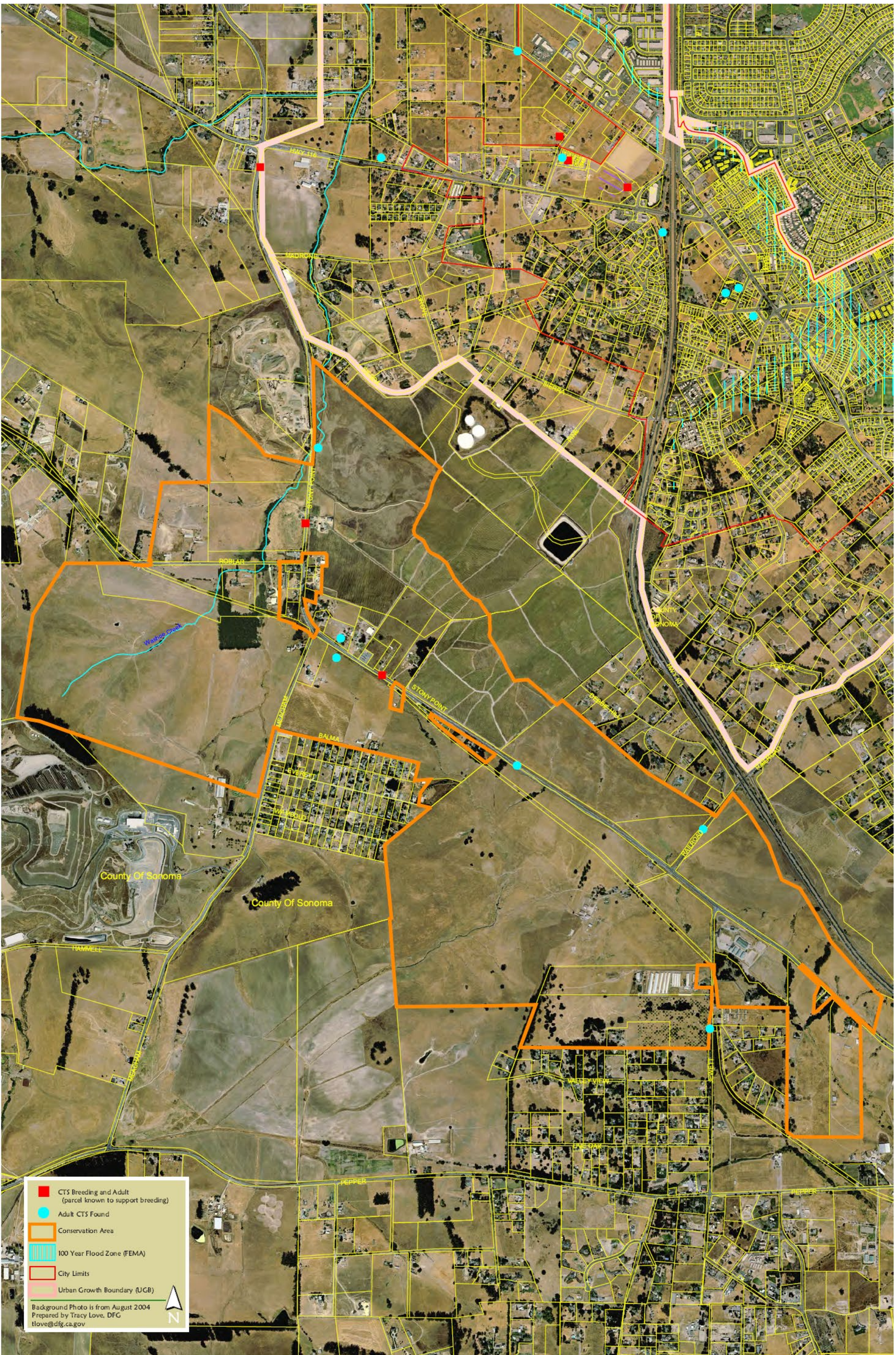


Figure 11 - Santa Rosa Plain Conservation Strategy - Southwest Cotati Conservation Area - 11/25/05

0 500 1000 1500 2000 Feet

Figure 12. Southwest Santa Rosa Preserve System



Figure 12 - Santa Rosa Plain Conservation Strategy - Southwest Santa Rosa Preserve System - 11/25/05

Figure 13. Windsor Plant Conservation Area

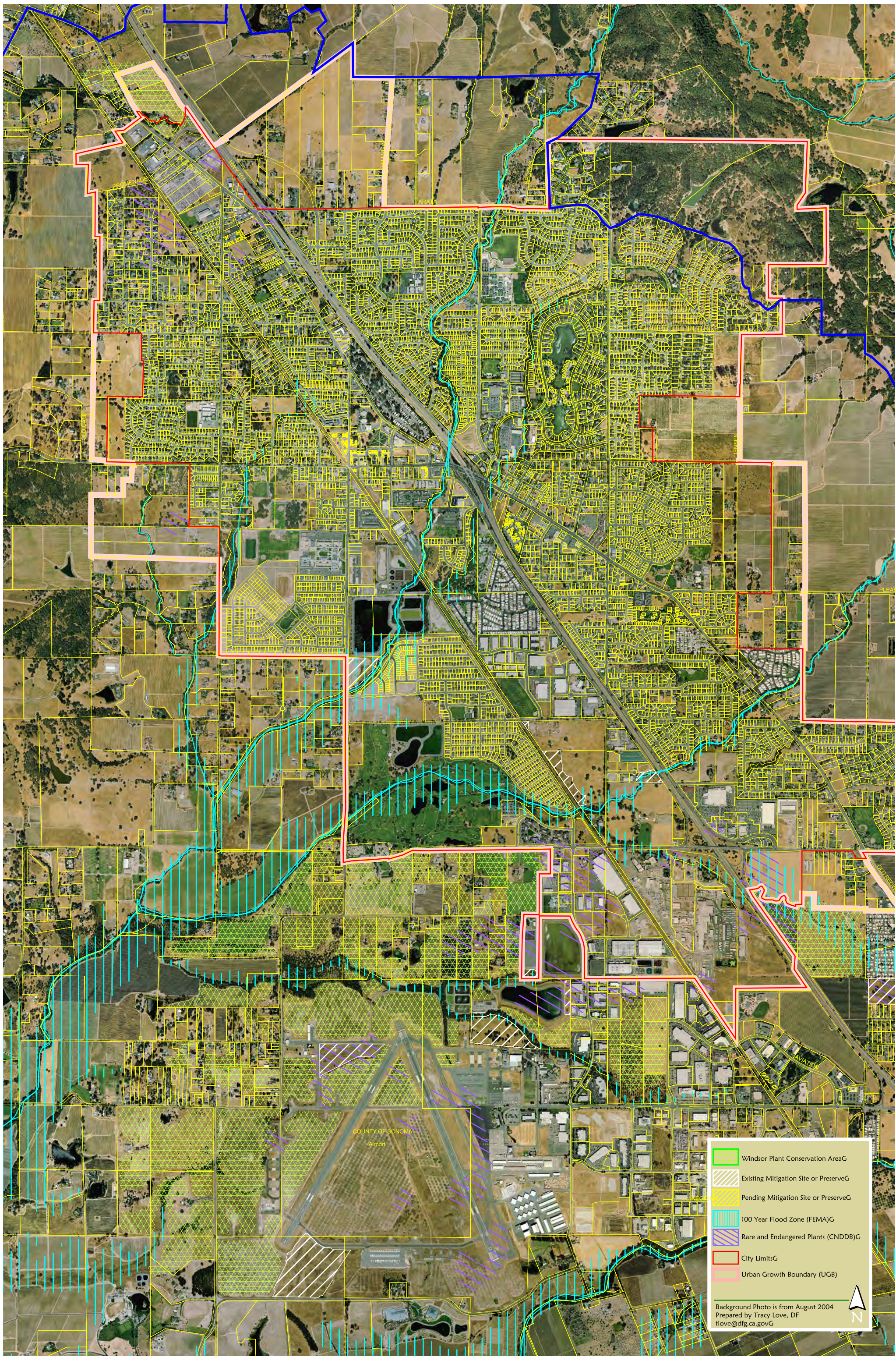


Figure 13 - Santa Rosa Plain Conservation Strategy - Windsor Plant Conservation Area - 8/1/05G

OG 500G 1000G 1500G 2000Gfeet