



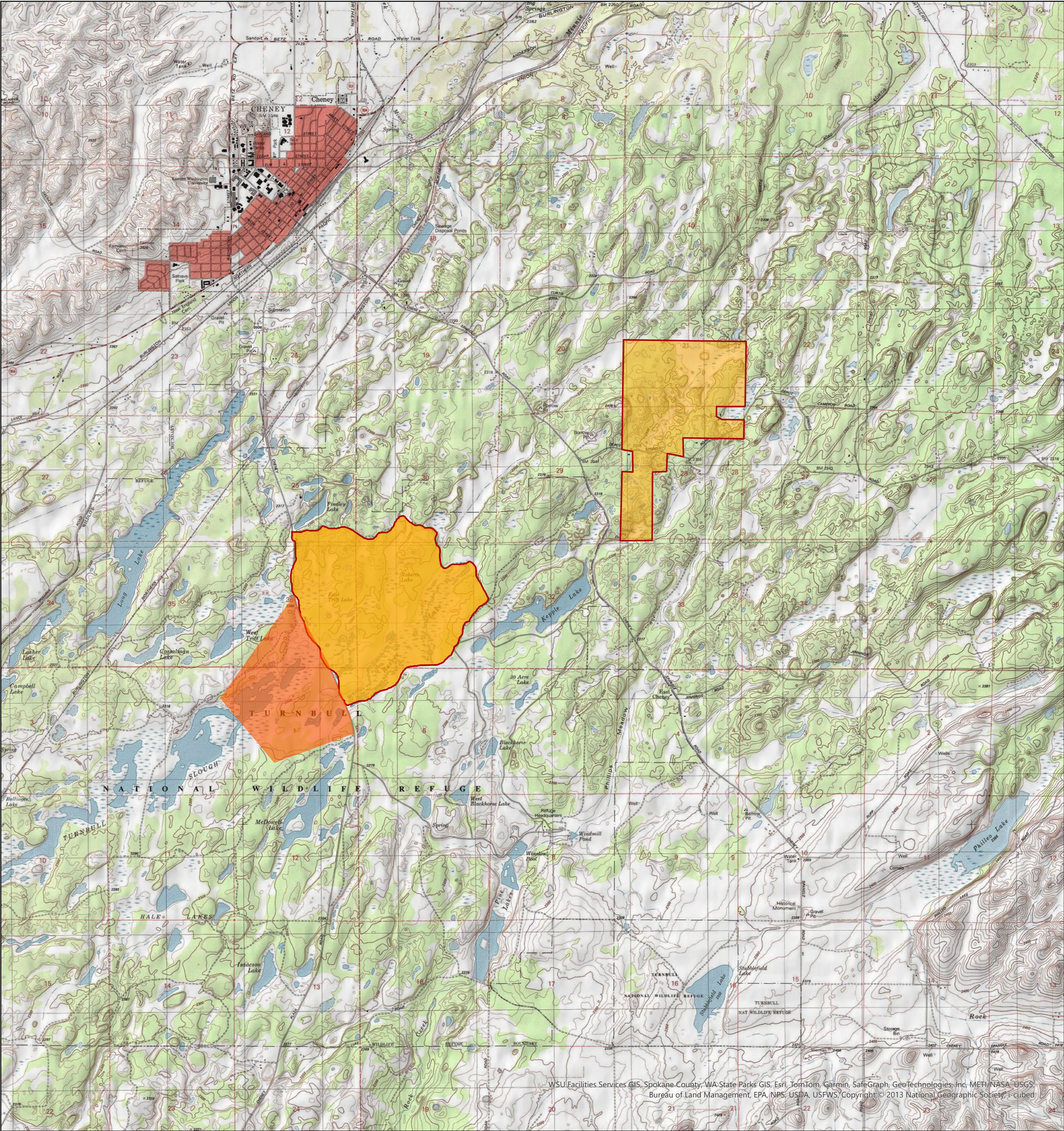
U.S. Fish & Wildlife Service

Turnbull National Wildlife Refuge

Spokane County, WA

Spring Burning

Rocky Pine & Reeves & Upper Turnbull



TBR Fall RX

March-May

0

The USFWS makes no warranty for use of this map and cannot be held liable for actions or decisions based on map content.

This map is intended to prescribed fire locations for the Rocky Pine, Reeves Lake, and Upper Turnbull units. The piles are located on Refuge land approximately 1-5 miles south of Cheney, WA.

Map image is the intellectual property of Esri and is used herein under license. Copyright © 2019 Esri and its licensors. All rights reserved.

