



## U.S. Fish & Wildlife Service

# Nestucca Bay

## National Wildlife Refuge Waterfowl Hunting Regulations

### Welcome

Nestucca Bay National Wildlife Refuge was established in 1991 to protect and enhance habitat for Dusky Canada Geese and Aleutian Cackling Geese. Nestucca Bay NWR actively engages in pasture management with local dairy farmers to offer prime habitat for geese during the winter.

### Oregon Coast National Wildlife Refuge Complex

2127 SE Marine Science Drive  
Newport OR 97365

541-867-4550

Oregoncoast@fws.gov  
[www.fws.gov/refuge/Nestucca\\_Bay](http://www.fws.gov/refuge/Nestucca_Bay)

U.S. Fish & Wildlife Service  
1-800-344-WILD

November 2025

### Firearms

Persons possessing, transporting, or carrying firearms on National Wildlife Refuge System lands must comply with all provisions of State and local law. Persons may only use (discharge) firearms in accordance with refuge regulations (50 CFR 27.42 and specific refuge regulations in 50 CFR Part 32.)

### Boats

Hunters accessing refuge lands by boat must use established boat launch areas. Hunters may moor boats within the marsh while hunting.

### Accessibility Information

Equal opportunity to participate in and benefit from programs and activities of the U.S. Fish and Wildlife Service is available to all individuals regardless of physical or mental ability. For more information please contact the U.S. Department of the Interior, Office of Equal Opportunity, <https://www.doi.gov/pmb/eeo/public-civil-rights>.

### Hunting and Fishing Regulations

Hunting regulations are designed to provide safe recreational opportunities through wise use of renewable wildlife resources. Fishing is permitted in accordance with Federal regulations governing public use on National Wildlife Refuges as set forth in Title 50 of the Code of Federal Regulations.

Hunting will be in accordance with applicable State of Oregon regulations subject to the conditions stated below.

### Access

**WHEN:** Hunting is allowed in the fall and winter, check current Oregon Game Bird Regulations for specific dates. During the waterfowl hunting season, hunting on Nestucca Bay refuge lands is allowed seven days per week. Hunters are permitted to enter either unit of the refuge two hours before sunrise and remain until one hour after sunset.

**WHERE:** Public hunting on Nestucca Bay National Wildlife Refuge is permitted on approximately 141 acres.

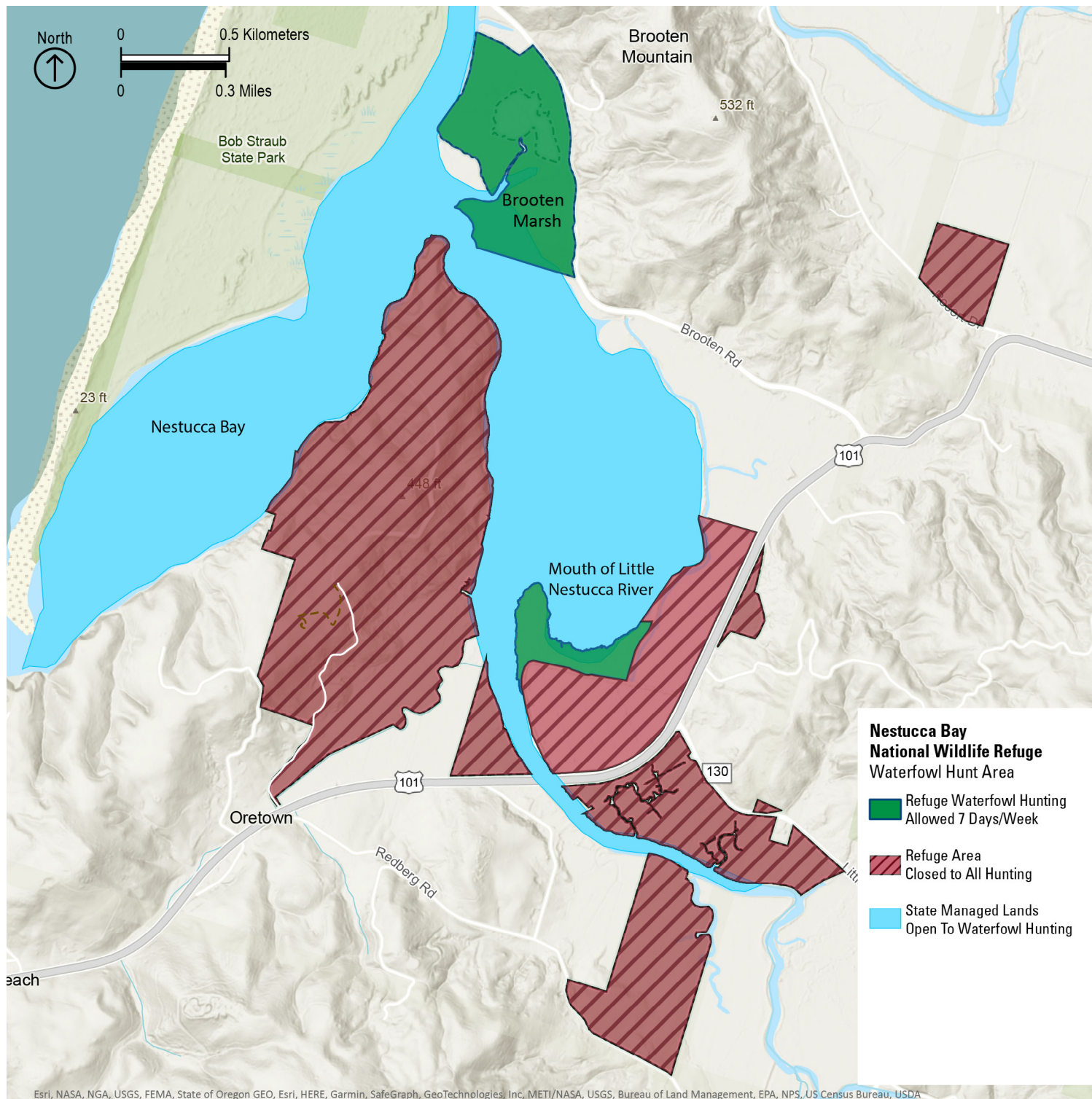
**WHAT:** Only ducks, geese and coots may be hunted on the refuge. No other wildlife species may be hunted on the refuge.

### Dogs

Hunters may use dogs as an aid to retrieving waterfowl during the hunting season. Dogs must be in a vehicle or on a leash until they are in the marsh as part of the hunt. Dogs must remain under control of the handler at all times.

This is a unit of the National Wildlife  
Refuge System, a network of lands  
and waters managed for the benefit of  
wildlife and people.





## Prohibited Activities

- Permanent Blinds. Only portable blinds or blinds constructed of on-site dead vegetation or driftwood may be used. No permanent blinds.
- Leaving personal property behind. It is the responsibility of hunters to remove all personal property including blinds, decoys, boats, shot shell hulls, and refuse from the refuge at the end of each day.
- The use or possession of alcoholic beverages while hunting.
- The discharge any weapon or ammunition in the field that may not be legally used for taking waterfowl.
- Use of toxic shot. Only federally approved non-toxic shot may be used or possessed while on the refuge.
- Target practice or sighting in rifles.
- No fires.
- Entering areas closed to hunting to retrieve downed birds.

## Signs and Boundaries

Please respect the following signs:

- Refuge Boundary: Entry permitted in accordance with refuge regulations
- Closed Area: All entry prohibited
- No Hunting Zone: Hunting, weapons, and game retrieval prohibited