

History

Grand Bay National Wildlife Refuge (NWR/Refuge) is one of over 570 National Wildlife Refuges managed as part of the U.S. Fish and Wildlife Service’s National Wildlife Refuge System. Grand Bay NWR encompasses 10,188 acres and was established in 1992 to protect one of the largest expanses of undisturbed pine savanna habitats in the Gulf Coastal Plain region.

Permit Information

These regulations apply to all Refuge hunts. Each Grand Bay NWR hunter must have in their possession a valid, signed copy of the Grand Bay National Wildlife Refuge Hunting Brochure and all required state license(s). All hunters under 16 years of age must be in the presence and under direct supervision of a licensed or exempt hunter at least 21 years of age. State regulations define youth hunter age and hunter education requirements.

Refuge Hours

General Refuge hours are from sunrise to sunset. During hunting season, hunters may enter the Refuge at 4 am and must exit no later than two hours after legal shooting hours unless otherwise specified.

Restricted and/or Closed Areas

It is unlawful to hunt from or shoot into an area within 100 feet of a feral hog trap.

It is unlawful to hunt from or shoot into the area that is within 300 feet of a designated road, trail, or parking lot. Areas marked in orange on Refuge map are closed.

Vehicles must not obstruct roads, gates, turn rows, field access ramps, or fire lanes and must be only operated on designated roads.

Temporary or permanent closure of Refuge areas may occur due to unforeseen circumstances and not be in this brochure.

Weapons and Ammunition

Big Game Hunting

We allow hunting of white-tailed deer and feral hog on designated areas of the Refuge subject to State regulations and the following conditions: Hunting is permitted only with bow and arrow and crossbows, according to state regulations.

Incidental take of feral hogs is only permitted during refuge deer hunts.

Small Game Hunting

We allow hunting of squirrels and rabbits on designated areas of the Refuge using .22 caliber rimfire only, all other state regulations apply.

Migratory Bird Hunting

Migratory bird hunting (including duck, goose, coot, and dove) is allowed on designated areas of the Refuge and subject to State and Federal regulation and the following conditions: You must possess only approved nontoxic shot while hunting migratory birds. You must only use portable or temporary blinds.

Decoys, duck blinds, blind material, and spent shells must be removed from the hunting area following each day’s hunt.

Other Opportunities

We allow the incidental take of coyote and nutria during any refuge hunt, using weapons that are legal for that specific hunt and in accordance with State seasons and regulations. This includes archery equipment during deer hunting seasons and approved weapons during small game and migratory bird seasons.

Pets/Animals

Dogs are allowed only for hunting birds (dove, goose and coot). Dogs must be leashed or under control of owner during hunt. Dogs must wear a collar displaying the owner’s contact information.

All other domestic animals are prohibited while hunting.

State Bag Limits

State season bag and possession limits apply.

During all state deer seasons, only archery equipment is allowed for deer hunting on the Refuge.

Deer Stands

We allow portable and climbing tree stands. Hunters must remove tree stands from the Refuge at the end of each day’s hunt.

While climbing a tree, installing a stand that uses climbing aids, or while hunting from a tree stand, hunters must use a fall

arrest system that is manufactured to Tree Stand Manufacturers Association Standards. Tree saddle users must always remain connected to the tree by means of a lineman’s belt or a tether.

It is unlawful to drive a nail, spike, or other metal object into a tree or to set a stand on any tree in which such an object has been driven. Cutting or trimming branches or brush is prohibited.

Fluorescent Orange or Pink

Hunters must wear hunter orange or pink in accordance with State law.

Prohibited Activities

- All commercial activities including guiding or participating in a paid guided hunt.
- Hunting from or shooting into an area within 100 feet of a feral hog trap.
- Areas marked in orange on the Refuge map are closed.
- Searching for or removing any object of archeological or historical significance as well as any natural materials such as plants, mushrooms, berries, and antler sheds.
- The use of artificial light, including vehicle headlights, to locate or take any animal.
- Use of ATVs and UTVs on the Refuge.
- Use or possession of any drug or device for employing such drug.
- Use of flagging tape, bright eyes, or other trail marking devices.
- Use or possession of alcohol.
- Fire, camping, or littering.
- Organized drives for deer or feral hog.
- Alligator hunting.
- Baiting, possession of bait in the field, and hunting over bait.
- Removal or destruction of vegetation for any reason.
- Overnight parking.

- Target shooting.
- Field dressing game (hogs included) within 300 feet of any road, trail or parking lot.
- Leaving personal property overnight on Refuge.
- Airboats, mudboats, jetskis, motorized pirogue, and air cooled propulsion engines.
- Use or possession of game cameras.

Signs and Boundaries

Signs are useful tools in regulating the use of a public area. The wording of the sign applies to the area behind the sign. Please respect the following signs:



**Refuge Boundary**  
Entry permitted in accordance with refuge regulations.



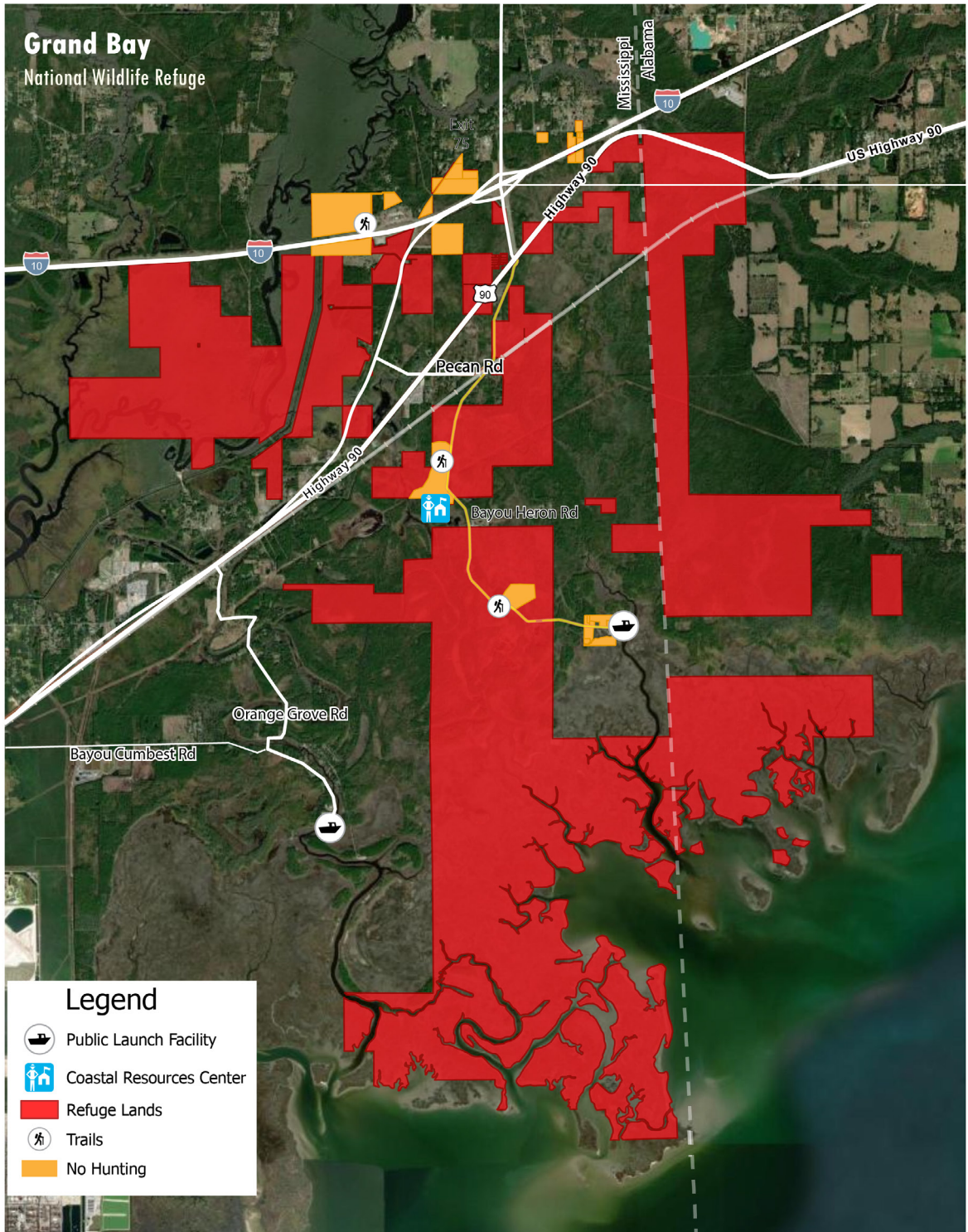
**Closed Area**  
All entry prohibited.



**No Hunting Zone**  
Hunting, weapons, or game retrieval prohibited.



**No Vehicles**  
All vehicle traffic prohibited.



Grand Bay National Wildlife Refuge  
Gulf Coast Refuge Complex  
7200 Crane Lane  
Gautier, MS 39553  
Phone: 228/497 6322  
<https://www.fws.gov/refuge/grand-bay/>  
U.S. Fish & Wildlife Service  
<https://www.fws.gov>  
August 2026



# Grand Bay

National Wildlife Refuge  
Hunting Regulations 2025-2026

## Grand Bay Refuge Hunting Permit 2025-2026

When signed and in your possession this brochure serves as your permit for all refuge hunts and acknowledges your understanding of the regulations contained herein.

I have read and understand these refuge regulations.

Signature (permits are not transferable)

Expires June 30, 2026

Season dates and bag limits may vary between states. A valid state hunting license, refuge permit, and identification, are required to be carried on person by hunters.