

## John H. Chafee National Wildlife Refuge (*NWR*)

### Waterfowl Hunting Program for 2025-2026



The U.S. Fish and Wildlife Service will provide migratory bird hunting opportunities at John H. Chafee National Wildlife Refuge (refuge) during the 2025-2026 refuge hunting season. Hunting opportunities include: goose, duck, merganser, and coot during the State waterfowl season. State safety regulations apply. Refuge hunt units are shown in Figures 1a - 1d. Hunters may not discharge weapons into, from, or within a hunt safety zone. Safety zones for firearms hunting include areas within 500 feet of a dwelling. Hunters may pass through safety zones on their way to hunt units, but weapons must be unloaded in the safety zones. Some, but not all safety zones are marked in the field. It is the hunter's responsibility to know where safety zones are located.

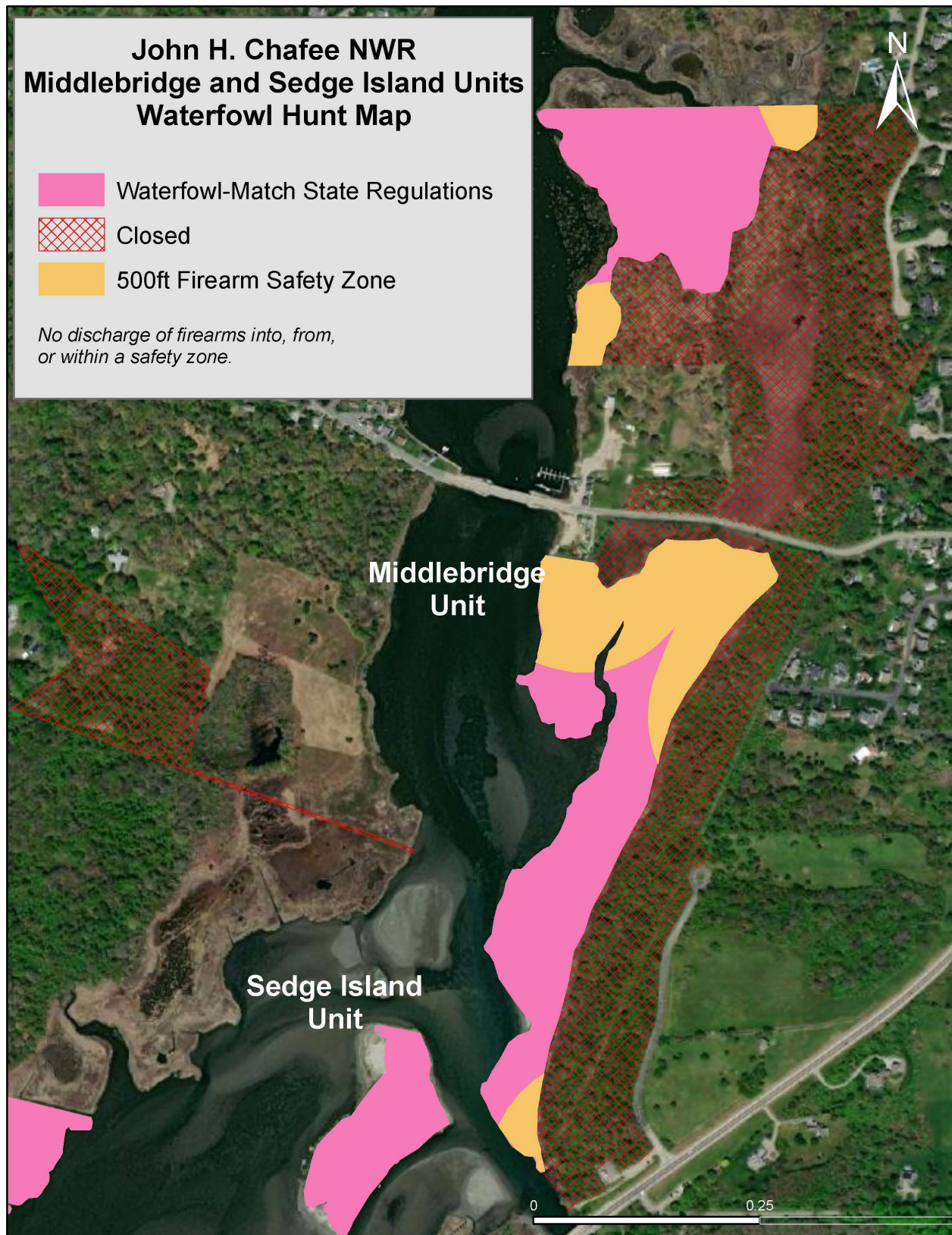
#### **2025-2026 Program Details:**

- Migratory bird hunting rules match State regulations on the following hunting units: Congdon Cove, Foddering Farms, Middlebridge, Sedge Island, Starr Drive, and Stedman (September – January).
- Hunters must obtain, sign, and carry a valid Refuge Waterfowl Hunting Brochure for each season to serve as written permission to access refuge units for hunting.
- We allow temporary waterfowl blinds and decoys; equipment must be removed at the end of each hunt day. Permanent waterfowl blinds are prohibited.
- We allow the use of dogs for retrieval of waterfowl consistent with State regulations. Dog training is not allowed on refuge property.

#### **Safety measures employed:**

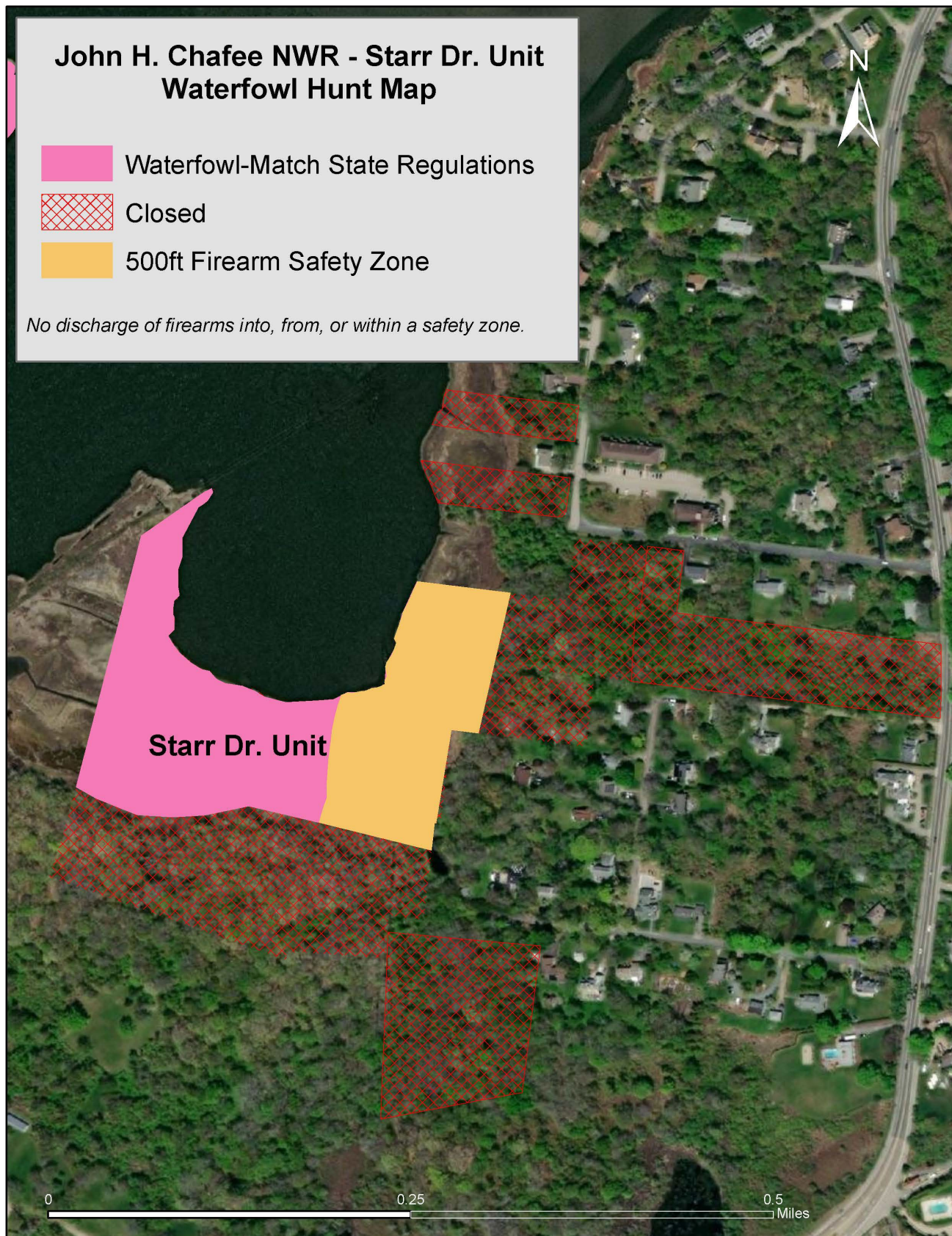
- All hunters must have a valid State hunting license, which requires a [hunter education course](#);
- All archery hunters for migratory birds must have a Rhode Island Archery Proficiency Certification;
- No discharge of firearms within 500 feet of a dwelling, and no discharge from or across a road;
- No discharge of archery equipment within 200 feet of a dwelling;
- Hunters will be provided maps of safety zones and hunt unit boundaries to aid in navigation;
- No hunting in safety zones;
- The public will be alerted to annual hunting seasons with news releases, and website/Facebook postings;
- The hunting program will be monitored and have adjustments made as deemed necessary.

**Figure 1a.** Middlebridge and Sedge Island Units Waterfowl Hunt Map, John H. Chafee National Wildlife Refuge. Hunt maps were created using GIS mapping for informational use, not for legal purposes.



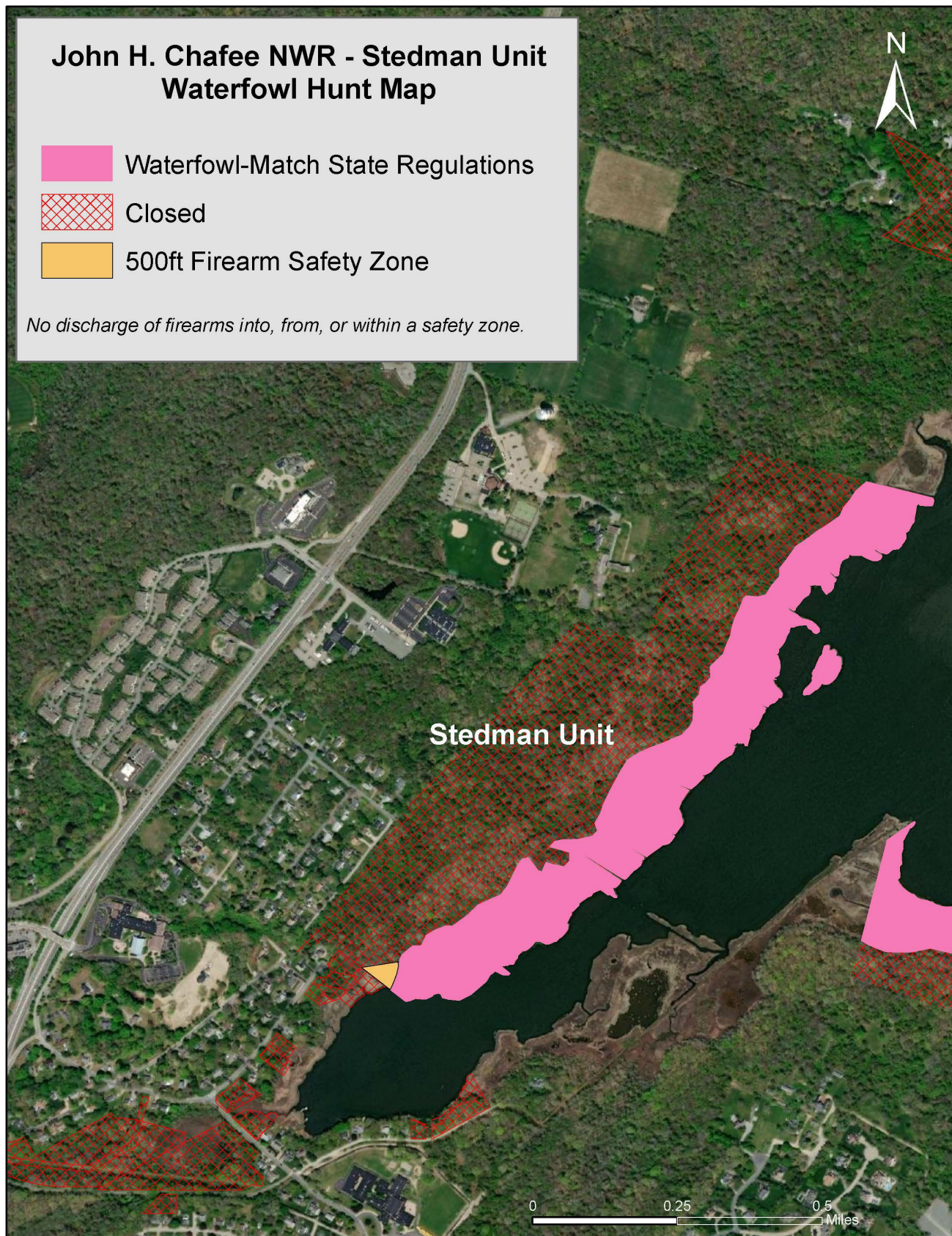


**Figure 1b.** Starr Drive Unit Waterfowl Hunt Map, John H. Chafee National Wildlife Refuge. Hunt maps were created using GIS mapping for informational use, not for legal purposes.



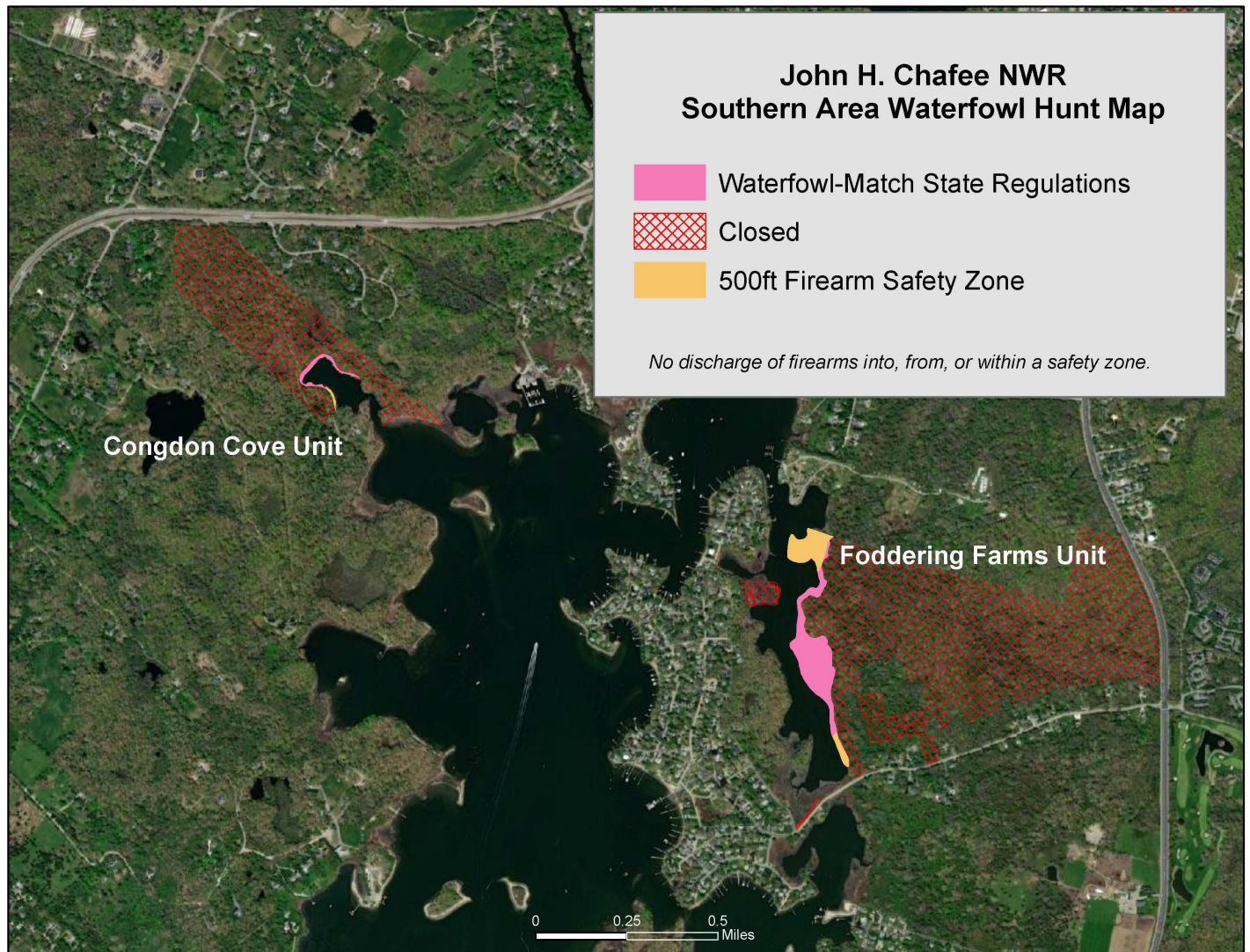


**Figure 1c.** Stedman Unit Waterfowl Hunt Map, John H. Chafee National Wildlife Refuge. Hunt maps were created using GIS mapping for informational use, not for legal purposes.





**Figure 1d.** Congdon Cove and Foddering Farms Units Waterfowl Hunt Map, John H. Chafee National Wildlife Refuge. Hunt maps were created using GIS mapping for informational use, not for legal purposes.



Please call the refuge at 401-364-9124 if you have any questions.

