

Hackmatack

National Wildlife Refuge Hunting and Fishing Regulations



Welcome to Hackmatack National Wildlife Refuge

Hackmatack National Wildlife Refuge (refuge) is managed by the U.S. Fish and Wildlife Service. Established in 2012 for the protection of migratory birds and federal trust species, it is a bi-state refuge that includes portions of Illinois and Wisconsin. Located centrally to Chicago IL, Milwaukee WI, and Rockford IL, the refuge provides a wide variety of wildlife-dependent recreational activities to the public, including hunting, fishing, wildlife observation, interpretation, environmental education, and photography. For more information about Hackmatack National Wildlife Refuge, visit www.fws.gov/refuge/hackmatack.

Safety

To ensure both your safety, the safety of others, and the safety and protection of wildlife and habitat, please be aware of the following regulations. At any time, hunters may encounter other recreational users.

To Report Violations

- To report a wildlife violation call 1-844-397-8477 (FWS-TIPS)
- Illinois Tip Line: 1-877-236-7529 (2DNRLAW)
- Wisconsin Violation Hotline: 1-800-847-9367

Firearms

Persons possessing, transporting, or carrying firearms on National Wildlife Refuge System lands must comply with all provisions of State and local law. Persons may only use (discharge) firearms in accordance with refuge regulations (50 CFR 27.42 and specific refuge regulations in 50 CFR Part 32.)

Vehicles

Motor vehicles are not permitted unless within the designated parking areas (to include frozen bodies of water). ATVs, OHVs, and OHMs are prohibited. Foot travel is allowed on all portions of the refuge.

Accessibility Information

Equal opportunity to participate in and benefit from programs and activities of the U.S. Fish and Wildlife Service is available to all individuals regardless of physical or mental ability. For more information please contact the U.S. Department of the Interior, Office of Equal Opportunity, <https://www.doi.gov/pmb/eo/public-civil-rights>

Hunting and Fishing Regulations

Hunting and fishing regulations are designed to provide safe recreational opportunities through wise use of renewable wildlife resources. Hunting and fishing are permitted in accordance with Federal regulations governing public use on National Wildlife Refuges as set forth in Title 50 of the Code of Federal Regulations.

Hunting and fishing will be in accordance with applicable State of Illinois and Wisconsin regulations and subject to the conditions stated below. It is the responsibility of the hunters

Office is located in Lost Valley Visitor Center,
Glacial Park
6313 Harts Road
Ringwood, IL 60072

815-678-4532

TTY Federal Relay System: 1-800-877-8339

U.S. Fish & Wildlife Service
1-800-344-WILD

March 2025



to know the respective state regulations, including hunting methods, license, tagging and reporting requirements. Brochures may be obtained by mail, at the refuge headquarters, or from the refuge website.

Dogs

The use of dogs while hunting migratory game birds and upland game is allowed, provided the dog is under the immediate control of the hunter at all times. Hunting with dogs for deer, black bear, raccoon, red fox, gray fox, opossum, bobcat, coyote, and striped skunk is prohibited.

Access

Hunters may only access the refuge one hour before legal sunrise until one hour after legal sunset. Portions of the land within or surrounding the boundaries of the refuge are private. Refuge lands are posted with boundary signs. Persons wishing to access private land must gain permission from the landowner.

Species

All refuge wildlife are protected, except those species for which hunting is specifically authorized. The refuge is open to hunting for the following species: Waterfowl (ducks, geese); Migratory birds other than waterfowl (mourning dove, coot, rail, common moorhen, crow, snipe); Big game (white-tailed deer, bear); Upland game (pheasant, partridge, grouse, quail); Wild turkey; Small game & furbearer (gray & fox squirrel, cottontail rabbit, snowshoe hare, fox (red and gray), coyote, raccoon, bobcat, opossum, skunk, woodchucks). Additional furbearer species may be allowed if legally open according to state regulation for hunting. No trapping is permitted on the refuge. Species not listed are closed to hunting.

Fishing

Fishing is an approved activity subject to all respective state regulations, including seasons, species, and methods of take. Nighttime fishing and collection of frogs and turtles is prohibited.

Ammunition

Hunters may only possess and use approved non-toxic shot while on the refuge. All other state specific regulations for Firearm and Archery Equipment Regulations apply.

Artificial Lights

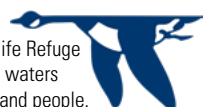
You may not use a spotlight, headlight or other artificial light to spot, locate or take any wild animal in the refuge.

Blinds/Tree Stands

We prohibit the building or use of permanent stands or blinds on the refuge. No nails, screw-in steps, wire, screws, bolts, or other items that penetrate the outer bark may be used. Portable tree stands and ground blinds must be set up and removed each day and used in accordance with state regulations.

Clothing

Hunters must wear an article of blaze orange/pink consistent with state regulations.

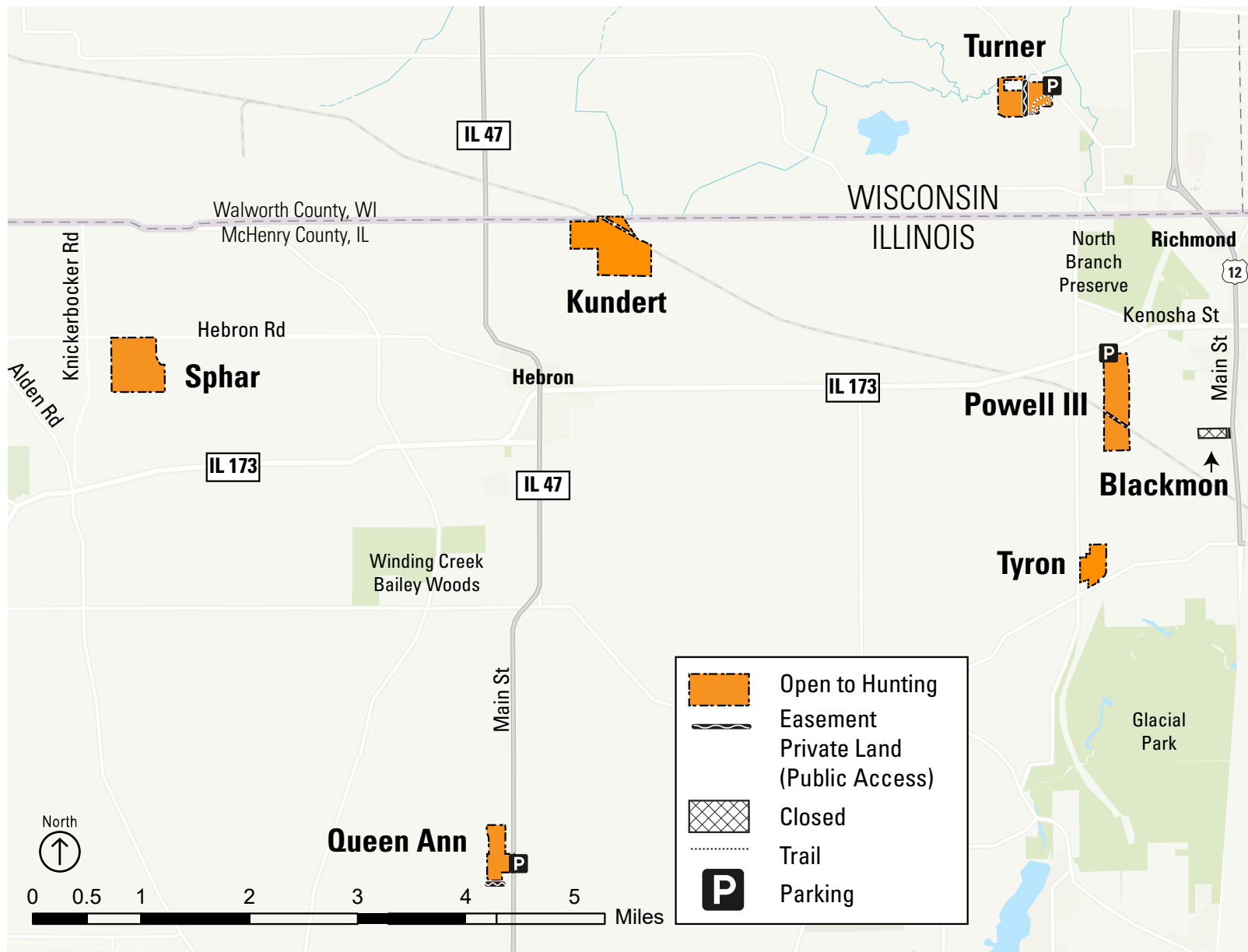


Prohibited Activities

By law, recreational activities on national wildlife refuges are prohibited unless expressly permitted.

- Blackmon parcel is CLOSED to hunting.
- Trapping
- Camping, overnight parking, and open fires.
- Use of motorized vehicles, horses or other domestic livestock for big game retrieval or recreational trail riding or any other purpose.
- Leaving property overnight. All property brought onto the refuge must be removed at the end of each day. This includes items like decoys, blinds, trail cameras, portable stands, climbing sticks and trash.
- Marking or flagging any tree or other refuge feature with reflectors, paint, or other substance.
- Organized deer drives. We define a "deer drive" as an organized or planned effort to pursue, drive, chase, or otherwise frighten or cause deer to move in the direction of any person(s) who is part of the organized or planned hunt and known to be waiting for the deer.
- Use or possession of alcoholic beverages while hunting.
- Distribution of feed or bait, or hunting over bait; including, but not limited to salts and minerals.
- Target or indiscriminate shooting.
- Training of dogs and allowing dogs off leash from April 15th to August 15th. Pets must be under the owner's control when not on a leash.
- Abandoning, discarding or otherwise leaving of personal property, animal carcasses, trash, refuse, rocks, wood or other debris.
- Destructing, defacing, disturbing or unauthorized removal of any natural object, artifact, cultural resource or government property.
- Cutting, mowing, sawing, digging, collecting, injuring or removing vegetation.
- Collecting or gathering of edible plants, seeds, mushrooms and deer sheds.
- Introducing, liberating, or placing plants or animals or their parts on refuge lands or waters.
- Launching, landing or disturbing of wildlife by aircraft (drones) on the refuge, includes for recreational or commercial purposes.
- Commercial enterprise without a special use permit.
- Use or possession of illegal drugs or drug paraphernalia.

Activity	Season Dates	Hunting Hours	Special Regulations
Archery Deer and Turkey Hunting	Wisconsin/Illinois	State Shooting Hours	State regulations apply. All state approved archery equipment is allowed.
Deer Gun Hunting (rifle/shotgun)	Wisconsin	State Shooting Hours	State regulations apply
Deer Shotgun Hunting	Illinois	State Shooting Hours	State regulations apply
Muzzleloader Deer Hunting	Wisconsin/Illinois	State Shooting Hours	State regulations apply
Upland Game Hunting, Migratory Bird Hunting (Waterfowl and non-waterfowl species)	Wisconsin/Illinois	State Shooting Hours	State regulations apply. Hunters must possess and use only non-toxic shot shells.
Firearm Turkey Hunting	Wisconsin/Illinois	State Shooting Hours	State regulations apply. Hunters must possess and use only non-toxic shot shells while turkey hunting.
Small Game Hunting (including furbearer)	Wisconsin/Illinois	Daylight hours only	State regulations apply. Hunters must possess and use only non-toxic shot shells. Nighttime furbearer hunting prohibited.
Fishing and Bow Fishing	Wisconsin/Illinois	Daylight hours only	State Regulations apply. Nighttime fishing prohibited.
Applicable state seasons and bag limits for all activities			



The USFWS makes no warrant for the use of this map and cannot be held liable for actions or decisions based on map content. Boundaries posted in the field supersede all boundaries shown on map.