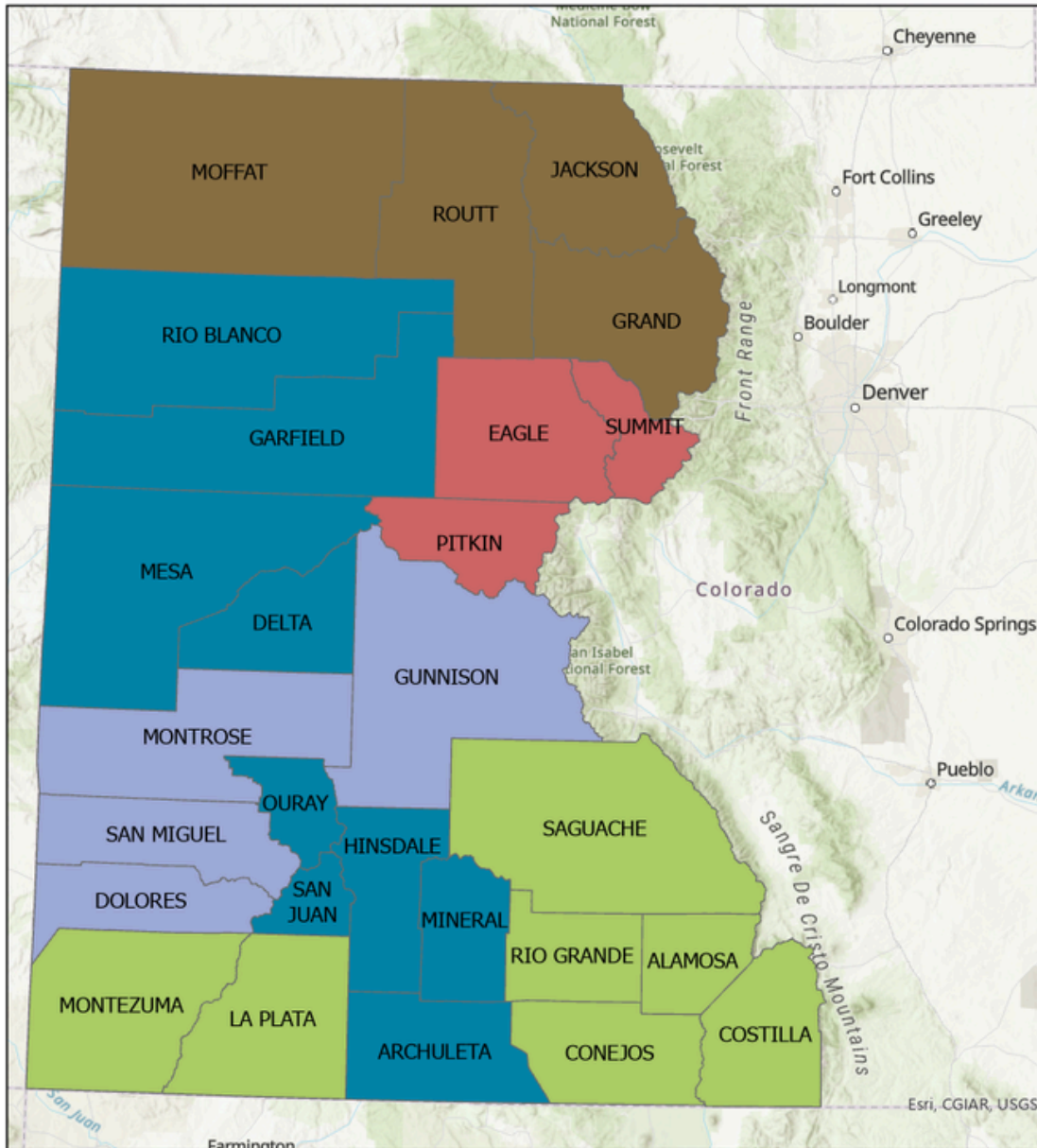


Who do I contact?

Federal agencies that do not manage public lands and others: to get project assistance on federally-listed, threatened and endangered species, please look at which U.S. Fish and Wildlife biologist is the lead in your **county**. If you have a general question, please email us at grandjunctiones@fws.gov or call the office at (970) 628-7180.



Jay Ruebens

jay_ruebens@fws.gov | (970)-238-7390

Moffat, Routt, Jackson, and Grand Counties

Kurt Broderdorp

kurt_broderdorp@fws.gov | (970)-238-3713

Eagle, Summit, and Pitkin Counties

Sarah Quadt

sarah_quadt@fws.gov | (970) 238-3709

Garfield, Archuleta, Mineral, Hinsdale, San Juan, Ouray, Rio Blanco, Mesa, and Delta Counties

Angela Trnka

angela_trnka@fws.gov | (970) 238-7435

Gunnison, Montrose, San Miguel, and Dolores Counties

Terry Ireland

terry_ireland@fws.gov | (970) 238-7243

Saguache, Alamosa, Costilla, Conejos, Rio Grande, La Plata, and Montezuma Counties

Kate Lunz

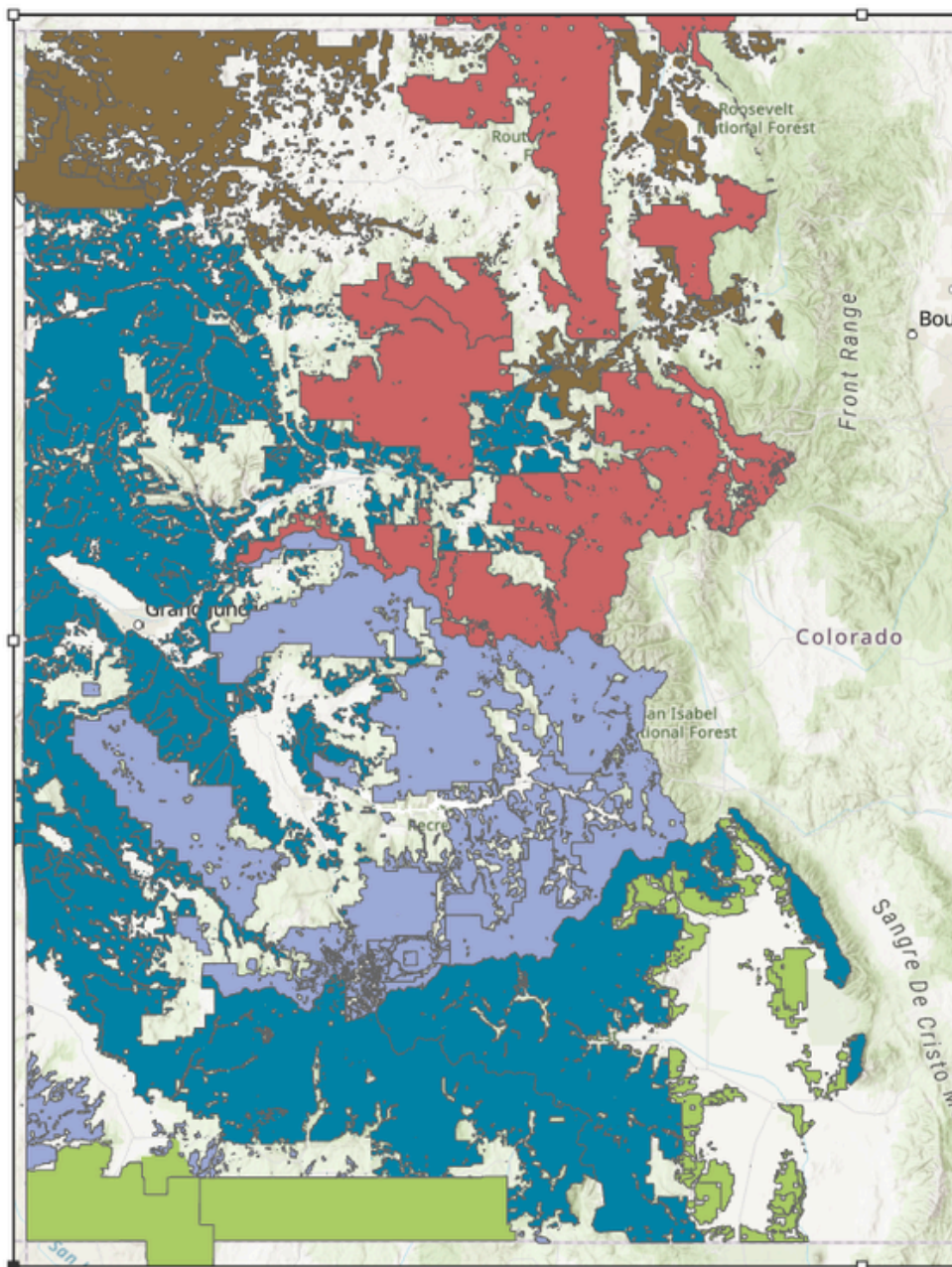
kathleen_lunz@fws.gov | (970) 238-7420

Colorado River Basin Fish & water depletions



Who do I contact?

Federal agencies that manage public lands and Native American reservations: To get project assistance on federally-listed, threatened and endangered species, please look at which U.S. Fish and Wildlife biologist is the lead for that **public land or reservation land**. If you have a general question, please email us at grandjunctiones@fws.gov or call the office at (970) 628-7180.



Jay Ruebens

jay_ruebens@fws.gov | (970)-238-7390

Little Snake and Kremmling BLM Field Offices; Dinosaur National Monument; Browns Park and Arapaho National Wildlife Refuges

Kurt Broderdorp

kurt_broderdorp@fws.gov | (970)-238-3713

White River National Forest and Medicine Bow-Routte National Forest

Sarah Quadt

sarah_quadt@fws.gov | (970) 238-3709

Grand Junction, Colorado River Valley, White River, and Uncompahgre BLM Field Offices; San Juan, Rio Grande, and Manti-La Sal National Forests; Colorado National Monument

Angela Trnka

angela_trnka@fws.gov | (970) 238-7435

Gunnison and Tres Rios BLM Field Offices; Grand Mesa, Uncompahgre and Gunnison National Forest; Black Canyon National Park, Curecanti National Recreation Area

Terry Ireland

terry_ireland@fws.gov | (970) 238-7243

Southern Utes, Ute Mtn Utes; San Luis Valley BLM Field Office, Baca, Monte Vista, and Alamosa National Wildlife Refuges; Mesa Verde Nat

Kate Lunz

kathleen_lunz@fws.gov | (970) 238-7420
Colorado River Basin Fish & water depletions

