

Brazoria

National Wildlife Refuge Hunting and Fishing Regulations 2025–2026



Welcome

Brazoria National Wildlife Refuge (NWR) includes 46,000 acres of marsh and upland habitats on the Gulf of America. It is more water than land, a place never far from the restless lapping and stirring of salt and fresh water. Dense interlocking marshes rise almost imperceptibly to low prairies, while vast flocks of waterfowl make this Gulf Coast region home for the winter. Established in 1966, Brazoria protects vital coastal wetland plants and animals.

Brazoria NWR is home to several threatened and endangered species. These species require a higher level of protection to ensure they will survive. For this reason, do not approach or try to capture, sea turtles, eastern black rails, piping plover or whooping cranes. If a sea turtle is caught on your fishing gear, carefully remove the hook and return it to the water. For further information on threatened and endangered species, please visit our web page.

Safety

At any time, hunters and anglers may encounter alligators. Alligators can behave aggressively, especially during nesting season. Hunters and anglers should use caution when in close proximity to these animals. Do not feed alligators or any other wildlife. When walking the hunting or fishing areas, watch out for poison ivy, venomous snakes, and fire ants.

Firearms

Persons possessing, transporting, or carrying firearms on National Wildlife Refuge System lands must comply with all provisions of State and local law.

All hunting activities on refuge lands require the use of non-toxic shot. Persons may only use (discharge) firearms in accordance with refuge regulations (50 CFR 27.42) and specific refuge regulations in 50 CFR Part 32.)

Vehicles

Licensed motor vehicles are permitted only on public use roads and routes as shown on the map. Vehicles are required to park in designated parking areas, and

in such a manner as to not obstruct normal vehicle traffic. Non-motorized bicycles are allowed on levee roads beyond designated parking areas in the hunting areas.

Boats

The refuge allows canoes, kayaks, and boats with non-combustion engines to be launched and operated in Cannan Bend public fishing area. Boats may have a combustible engine attached but it can not be operated in Cannan Bend lake. The use of motorized boats, including airboats, in open tidal waters is allowed in the waterfowl hunting areas and saltwater fishing areas as long as emergent and sub emergent vegetation is not damaged and bottom gouging does not occur.

Accessibility Information

Equal opportunity to participate in and benefit from programs and activities of the U.S. Fish and Wildlife Service is available to all individuals regardless of physical or mental ability. The refuge provides ADA accessibility in 3 fishing areas and 1 hunting area.

Hunting and Fishing Regulations

Hunting and fishing regulations are designed to provide safe recreational opportunities through wise use of renewable wildlife resources. Hunting and fishing are permitted in accordance with Federal regulations governing public use on National Wildlife Refuges as set forth in Title 50 of the Code of Federal Regulations.

Hunting and fishing will be in accordance with applicable State of Texas regulations subject to the conditions stated below.

Access

WHERE: The refuge has two public waterfowl hunting areas open for waterfowl hunting; Alligator Marsh Public Waterfowl Hunting Area (AMPWHA) and Christmas Point Public Waterfowl Hunting Area (CPPWHA). The refuge also has four separate units for dove and pigeon hunting; Middle Bayou Unit

Brazoria National Wildlife Refuge Hunting and Fishing Permit 2025—2026

When signed and carried, this serves as your permit for all refuge hunting and fishing and acknowledges your understanding of the regulations contained herein.

Expires August 31, 2026

Signature (permits are not transferable)

(MBU), Bluestem Unit (BU), Walker Unit (WU), and Farm Fields Unit (FFU). Saltwater fishing is available at the Salt Lake Public Fishing Area (SLPFA), Bastrop Bayou Public Fishing Pier (BBPFP), and Clay Banks Public Fishing Area (CBPFA). In addition to the three public saltwater fishing areas open to fishing, public freshwater fishing is available at the Cannan Bend Recreation Area (CBRA).

WHEN: Hunters may only access AMPWHA between 4:00am and 1:00pm on Wednesday, Saturday, and Sunday during the set waterfowl season. Hunters may only access CMPWHA from 4:00am and 1:00pm on any day of the week during the set waterfowl season. The MB, BU, and WU Dove/Pigeon Hunting Areas will be open daily in accordance with State of Texas, including “Special White-winged Dove Days” occurring the first two weekends in September from noon until legal sunset. The FFU Dove/Pigeon Hunting Area will only be open for hunting three weeks during the waterfowl split in October, between Early Teal Season and Regular Waterfowl Season. Hunters are allowed in the dove/pigeon hunt areas one half hour before legal sunrise until one half hour after legal sunset. Saltwater fishing is allowed daily from sunrise to sunset, except at Bastrop Bayou Public Fishing Pier, which is offered 24 hours a day. Freshwater fishing is allowed daily from sunrise to sunset at the Cannan Bend Recreation Area.

Brazoria National Wildlife Refuge
 24907 FM 2004 Angleton, TX 77515
 979-964-4011
<https://www.fws.gov/refuge/brazoria/>

U.S. Fish & Wildlife Service
 1-800-344-WILD

June 2024



Hunt Type	Season	Harvest	Hunt Areas	Other Regulations
Waterfowl ducks, geese and mergansers	State regulations apply	State regulations apply Non-toxic shot only	Christmas Point PWHA Alligator Marsh PWHA	This signed brochure is required in addition to the proper State hunting license and endorsements.
Doves and pigeon	State regulations apply	State regulations apply Non-toxic shot only	Middle Bayou Unit Bluestem Unit Walker Unit	This signed brochure is required in addition to the proper State hunting license and endorsements.
Doves and pigeon – Farm Fields Unit	September 29, 2025 – October 19, 2025	State regulations apply Non-toxic shot only	Farm Fields Unit	This signed brochure is required in addition to the proper State hunting license and endorsements.

Fish Type	Bag Limit	Fishing Areas	Other Regulations
Saltwater	State regulations apply	Salt Lake Fishing Area Clay Bank Fishing Area Open Refuge Waters (listed above)	Daylight use only
Saltwater–Bastrop Bayou	State regulations apply	Bastrop Bayou Fishing Area	Open 24 hours
Freshwater	Not to exceed 5 fish of combined species (Largemouth bass are catch and release only)	Cannan Bend Fishing Area	Daylight use only Rod and reel only This signed brochure is required in addition to proper State fishing license and endorsements

Signs and Boundaries

Please respect the following signs:

- No vehicles: All Traffic prohibited
- Parking area: Designated areas to park while hunting and/or fishing

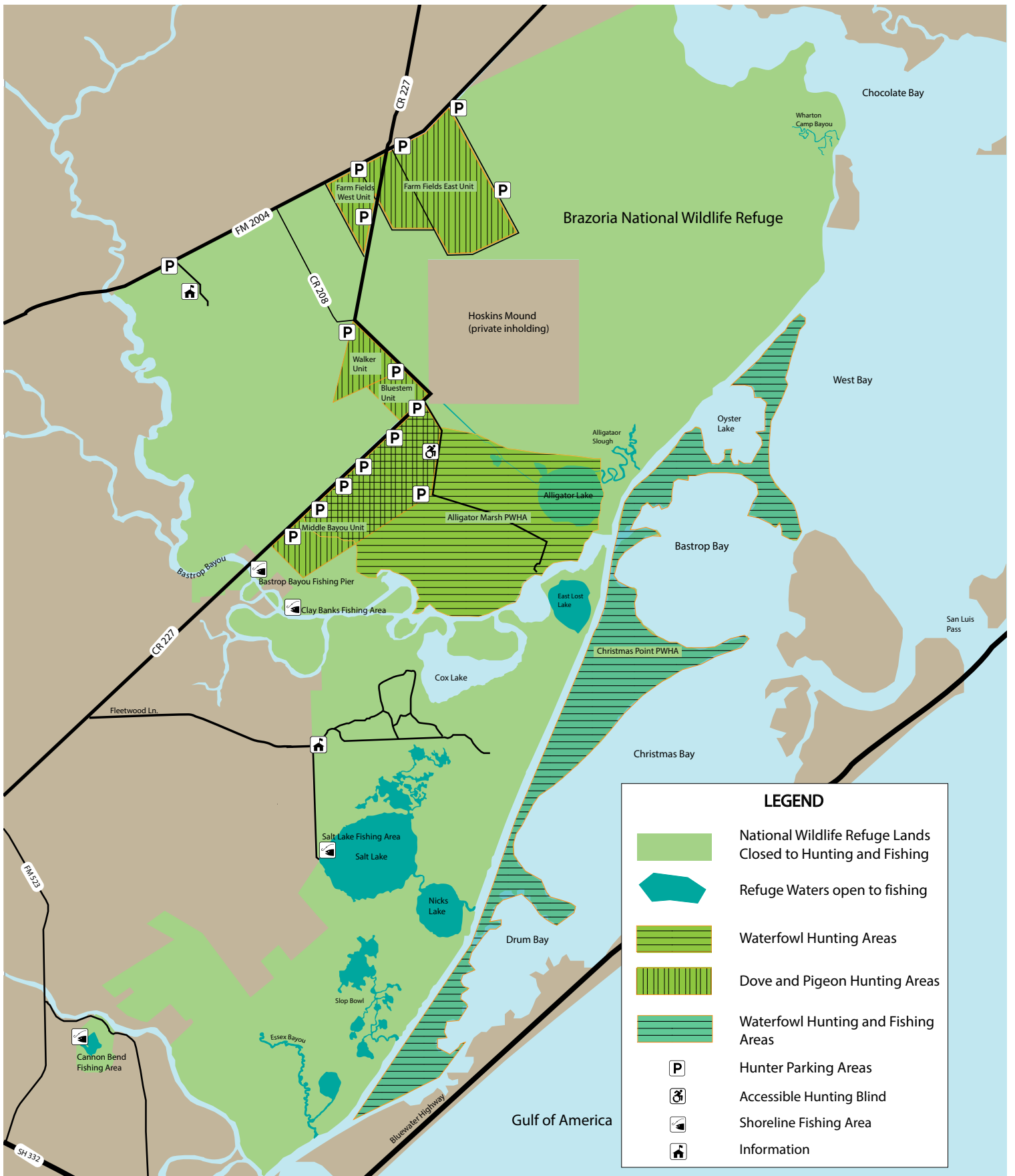
Applies to the area located behind the sign:

- Refuge Boundary: Entry permitted in accordance with refuge regulations
- Closed Area: All entry prohibited
- No Hunting Zone: Hunting, weapons, and game retrieval prohibited

Prohibited Activities

- Building or use of pits or permanent blinds
- Use or possession of alcoholic beverages in all public hunting and fishing areas and parking lots
- Off road vehicle travel or ATV use on the refuge
- Target shooting or target practice
- Dog training—with or without the use of firearms
- Blocking gates and roadways
- Entry (Scouting) in Public Hunting Areas prior to the opening of State seasons
- Hunting in Salt Lake, Nicks Lake, and East Lost Lake, which are refuge waters
- Camping and Fires
- Hunting is prohibited within 200 yards of any public use facility
- Use of trot lines, sail lines, set lines, jugs, gigs, spears, bush hooks, snatch hooks, crossbows, or bows and arrows of any type





Gulf of America

Chocolate Bay

Wharton Camp Bayou

Brazoria National Wildlife Refuge

Hoskins Mound (private inholding)

West Bay

Oyster Lake

Alligator Slough

Alligator Lake

Bastrop Bay

San Luis Pass

Christmas Point PWHA

Christmas Bay

Cox Lake

Drum Bay

Salt Lake Fishing Area

Salt Lake

Nicks Lake

Slop Bowl

Essex Bayou

Cannon Bend Fishing Area

Bluewater Highway

Fleetwood Ln.

CR 227

CR 208

FM 2004

CR 227

FM 525

SH 332

Bastrop Bayou

Bastrop Bayou Fishing Pier

Clay Banks Fishing Area

Information

Shoreline Fishing Area

Accessible Hunting Blind

Hunter Parking Areas

Waterfowl Hunting and Fishing Areas

Dove and Pigeon Hunting Areas

Waterfowl Hunting Areas

Refuge Waters open to fishing

National Wildlife Refuge Lands Closed to Hunting and Fishing