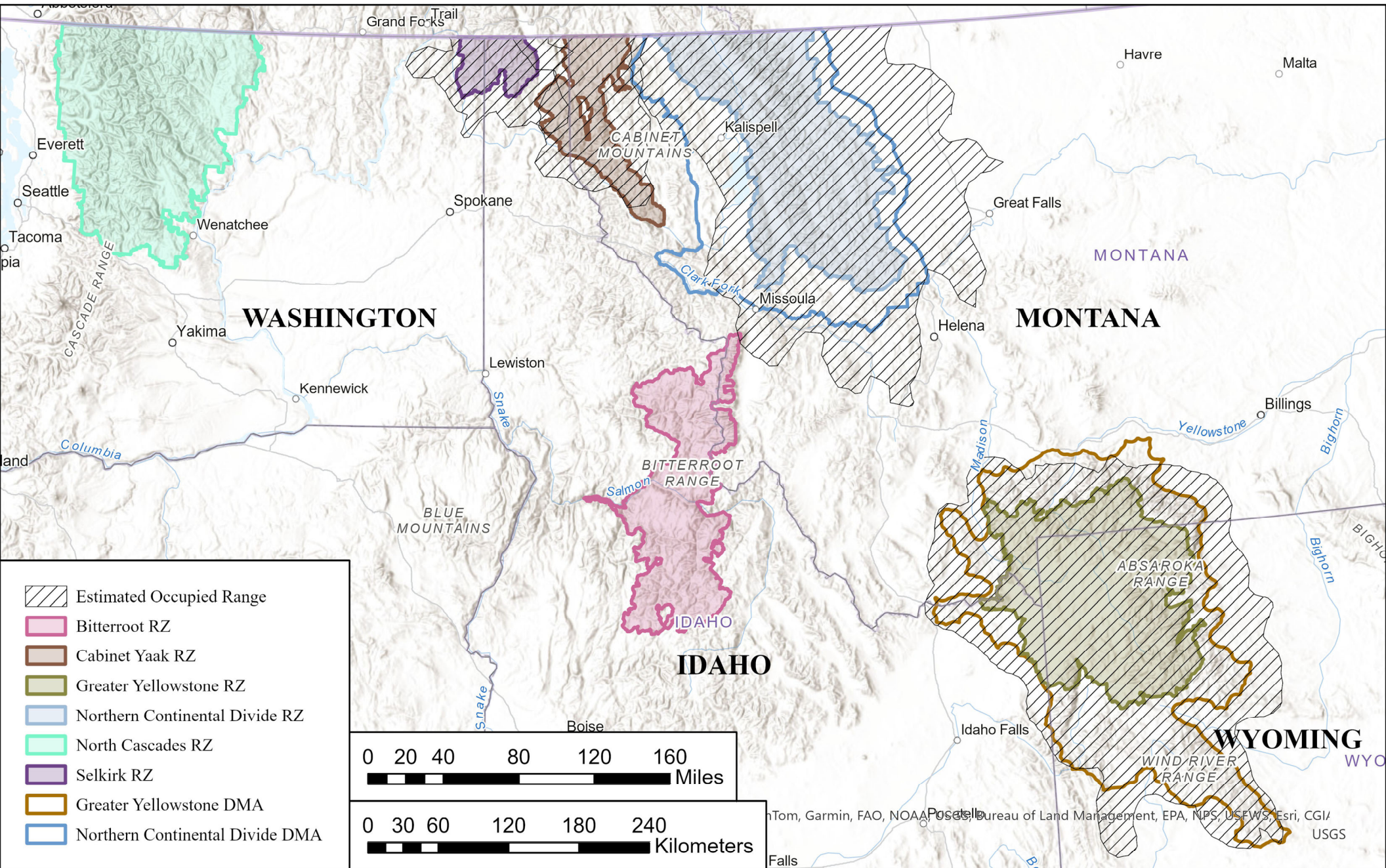


# Grizzly Bear Recovery Zones and Estimated Occupied Range



Estimated occupied range is current as of 2024 for the Greater Yellowstone, Northern Continental Divide, Cabinet-Yaak, and Selkirk Ecosystems. There are currently no known populations in the North Cascades and Bitterroot Ecosystems. Current estimated occupied range does not include low-density peripheral locations and represents a minimum known area of occupancy, not extent of occurrence. DMA= demographic monitoring area, RZ= recovery zone.