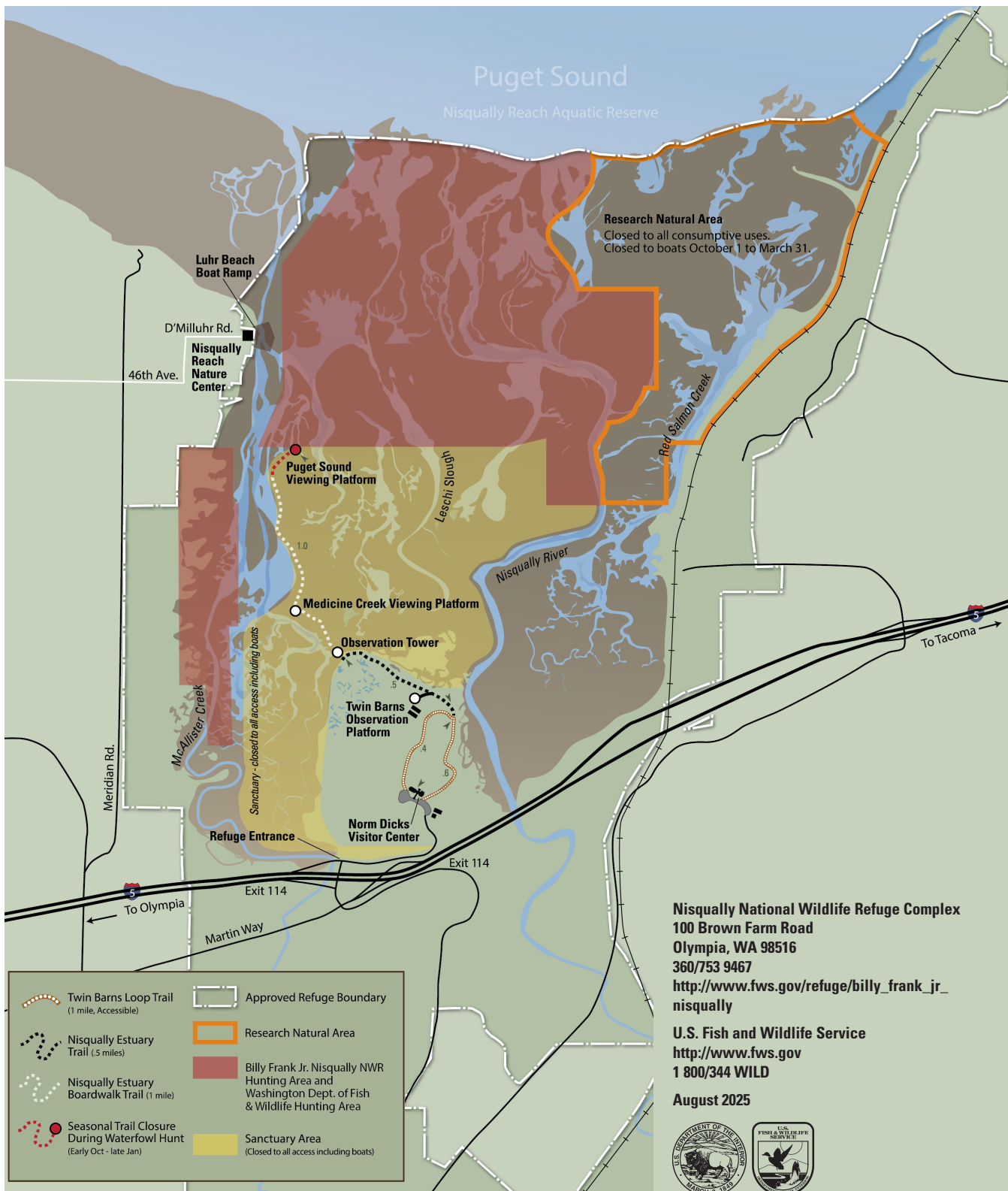


# Billy Frank Jr. Nisqually

National Wildlife Refuge  
Hunting Regulations  
2025–2026



Welcome

Billy Frank Jr. Nisqually National Wildlife Refuge was established in 1974 to protect the Nisqually estuary from development and provide vital estuarine habitat for fish and wildlife. A diversity of wetland habitats host migratory and overwintering waterfowl for wildlife-dependent activities.

Firearms

Persons possessing, transporting, or carrying firearms on National Wildlife Refuge System lands must comply with all provisions of State and local law. Persons may only use (discharge) firearms in accordance with refuge regulations (50 CFR 27.42 and specific refuge regulations in 50 CFR Part 32.)

Accessibility Information

Equal opportunity to participate in and benefit from programs and activities of the U.S. Fish and Wildlife Service is available to all individuals regardless of physical or mental ability. For more information please contact the U.S. Department of the Interior, Office of Equal Opportunity, <https://www.doi.gov/pmb/eeo/public-civil-rights>.

Hunting and Fishing Regulations

Hunting and fishing regulations are designed to provide safe recreational opportunities through wise use of renewable wildlife resources. Hunting and fishing are permitted in accordance with Federal regulations governing public use on National Wildlife Refuges as set forth in Title 50 of the Code of Federal Regulations.

Hunting and fishing will be in accordance with applicable State of Washington regulations subject to the conditions stated below. Brochures may be obtained by mail, at the refuge headquarters, or from the refuge website.

Shot must be U.S. Fish and Wildlife Service approved non-toxic shot. There is a 25 shell limit. Check Washington State Regulations for current year information. Call the Washington State Department of Fish and Wildlife at (360) 902-2200 or the Refuge at (360) 753-9467 for complete information on hunting regulations.

Access

Federal Lands – The U.S. Fish and Wildlife Service owns and manages about 3000 acres of the Nisqually Delta as Billy Frank Jr. Nisqually National Wildlife Refuge. 530 acres of the Refuge are open to waterfowl hunting.

State Lands – The Washington Department of Fish and Wildlife owns and manages three parcels (625 acres) of land within the approved Refuge boundary which are open to waterfowl hunting.

Access for fishing and hunting is by boat only. Luhr’s Landing is the closest boat ramp to the Nisqually Delta. Walk-in access from refuge trails is not permitted.

The Research Natural Area and Sanctuary Area are not open to public hunting and fishing. Watch for “No Hunting” or “Area Closed” signs.

Hunt Times: Official hunting hours are scheduled by the state of Washington and change daily. Refer to Washington Department of Fish and Wildlife regulations for specific times (WAC 220-416-050).

Retrieving Birds

Hunters may not enter closed areas to retrieve dead or crippled birds. Allow enough room between the closed boundary and where you are hunting to retrieve birds.

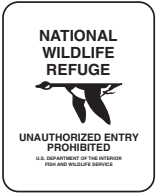


This QR code identifies your approximate location - verify your position with signs in the Delta

Activity	Season Dates
Geese	Oct. 11-19, 2025 Nov. 1, 2025 - Jan. 25, 2026
Ducks	Oct. 11-19, 2025 Oct. 22, 2025 - Jan. 25, 2026
Scaup	Nov. 1, 2025 - Jan. 25, 2026
Youth	Jan. 31, 2026
Active Military & Veterans	Jan. 31, 2026
Harlequin Duck is CLOSED to harvest statewide.	

Signs and Boundaries

The following signs are in place to help you understand Refuge boundaries as well as activities that are allowed and not allowed in certain areas of the Refuge.



National Wildlife Refuge Boundary

These signs let you know you are entering a National Wildlife Refuge.



Area Beyond This Sign Closed

This area is closed to all entry.

No hunting or boating is permitted. No roads or trails are open to the public.



Research Natural Area

Area behind these signs are closed to all access Oct. 1–March 31. The RNA is closed year round to all consumptive uses, including hunting, fishing, and shellfishing.



No Hunting Zone

These signs are used to inform the public that no hunting is allowed beyond these signs.