

Kulm Wetland Management District Hay Areas List 2025

County	Waterfowl Production Area	WPA Unit(s)	Approximate Acres to Hay	Start Date	Township	Section
Dickey	Earnest ***	2,3	128	8/1/2025	German	32
Dickey	Graham	1	20	8/1/2025	Albertha	6
Dickey	Gruneich	4	26	8/1/2025	Northwest	29
Dickey	Hamann ^^	2	6-22	8/1/2025	Ada	17
Dickey	Hauser	1	16	8/1/2025	Hudson	30
Dickey	Holmes ^^	5	14-16	8/1/2025	Ada	34
Dickey	Provost	1	8	8/1/2025	Ada	16
Dickey	Wishek	1	17	8/1/2025	Spring Valley	7
LaMoure	Hickey	2	17	8/1/2025	Mikkelson	23,26
LaMoure	Wendt ***	1	10	8/1/2025	Grandview	26
Logan	Kosanke	2	3	8/1/2025	Lautt	26
Logan	Koskiniemi	3	4	8/1/2025	Finn	2
Logan	PDL 1a	1	1	8/1/2025	Moos	28
Logan	PDL 1b	1	6	8/1/2025	Neudorf	30
Logan	Roesler Lake ^^	3,4	30	8/1/2025	Hillsburg	2
Logan	Werth	1	30	8/1/2025	Lautt	34
McIntosh	Bertsch ^^***	1,2	60-70	8/1/2025	Jewell	9
McIntosh	Edna ^^	1	9	8/1/2025	Iowa	28
McIntosh	Ham ^^	1	26	8/1/2025	Iowa	12
McIntosh	Hildebrand	1,2,3	87	8/1/2025	Myrtle	13
McIntosh	Kaseman	1	15	8/1/2025	Hoskins	16
McIntosh	Kessel ***	2	78	8/1/2025	Myrtle	8
McIntosh	Koeplin	2,3	70	8/1/2025	Lowenthal	4,9
McIntosh	Lux ^^	1	59	8/1/2025	Iowa	9
McIntosh	Rothfusz ***	1,2	56	8/1/2025	Danzig	15
	*** leafy spurge or yellow toadflax present on hay unit					
	^^ access may be restricted to all or portions of hay unit					



**Dickey, LaMoure, Logan, & McIntosh Counties**



-  Cities  
 State Highway  
 U.S. Highway  
 County  
 Township  
 2025 Hay WPAs  
 (request unit map for specific areas of WPA)

The USFWS makes no warranty for use of this map and cannot be held liable for actions or decisions based on map content. This map uses data from the NDGISHUB and USFWS to depict waterfowl production areas that have areas available for haying in the Kulm Wetland Management District.

Map image is the intellectual property of Esri and is used herein under license.  
Copyright © 1995-2023 Esri and its licensors. All rights reserved.

Produced in the Kulm Wetland Management District  
Kulm, North Dakota  
Produced: July 10, 2025  
Basemap: ESRI State Boundaries



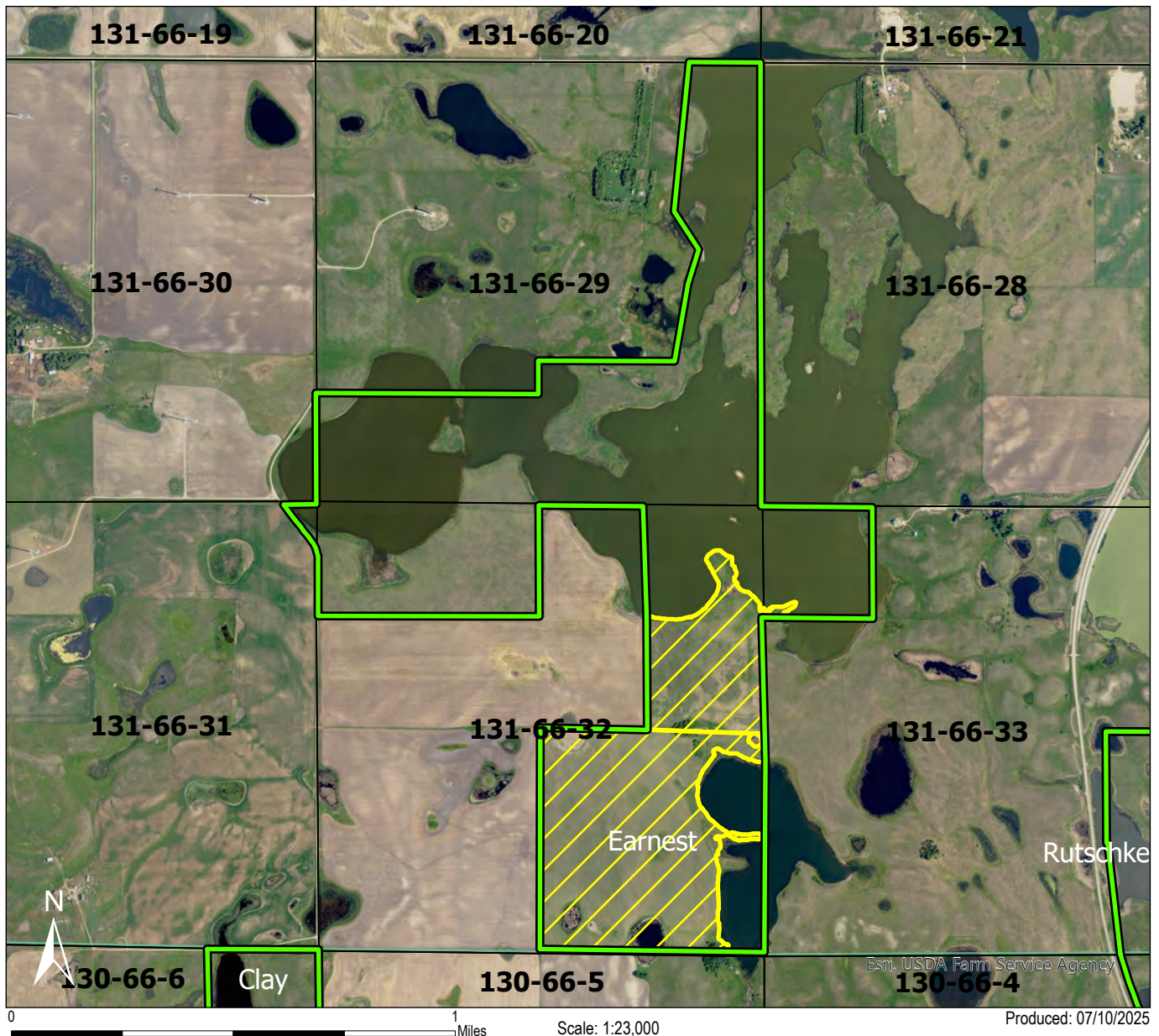


U.S. Fish & Wildlife Service

Kulm Wetland Management District 2025 Haying Map

Dickey County  
German Township

## EARNEST WPA: COOPERATOR TBD



**Haying period is August 1st through 21st.**  
**Bale and equipment removal date is September 15th.**

**Approximate hay acreage is: 128 acres. Section line access can be limited in times of high water.**

**Hayed acreage will be measured by GPS.**

**FWS contact: Krista Lundgren, 701-647-2866 (office), 701-830-0038 (cell)**

The USFWS makes no warranty for use of this map and cannot be held liable for actions or decisions based on map content.  
Produced by Kulm Wetland Management District.  
Datum: NAD 83  
Copyright © 1995-2023 Esri and its licensors.  
All rights reserved.  
Basemap: NAIP Aerial Imagery 2023



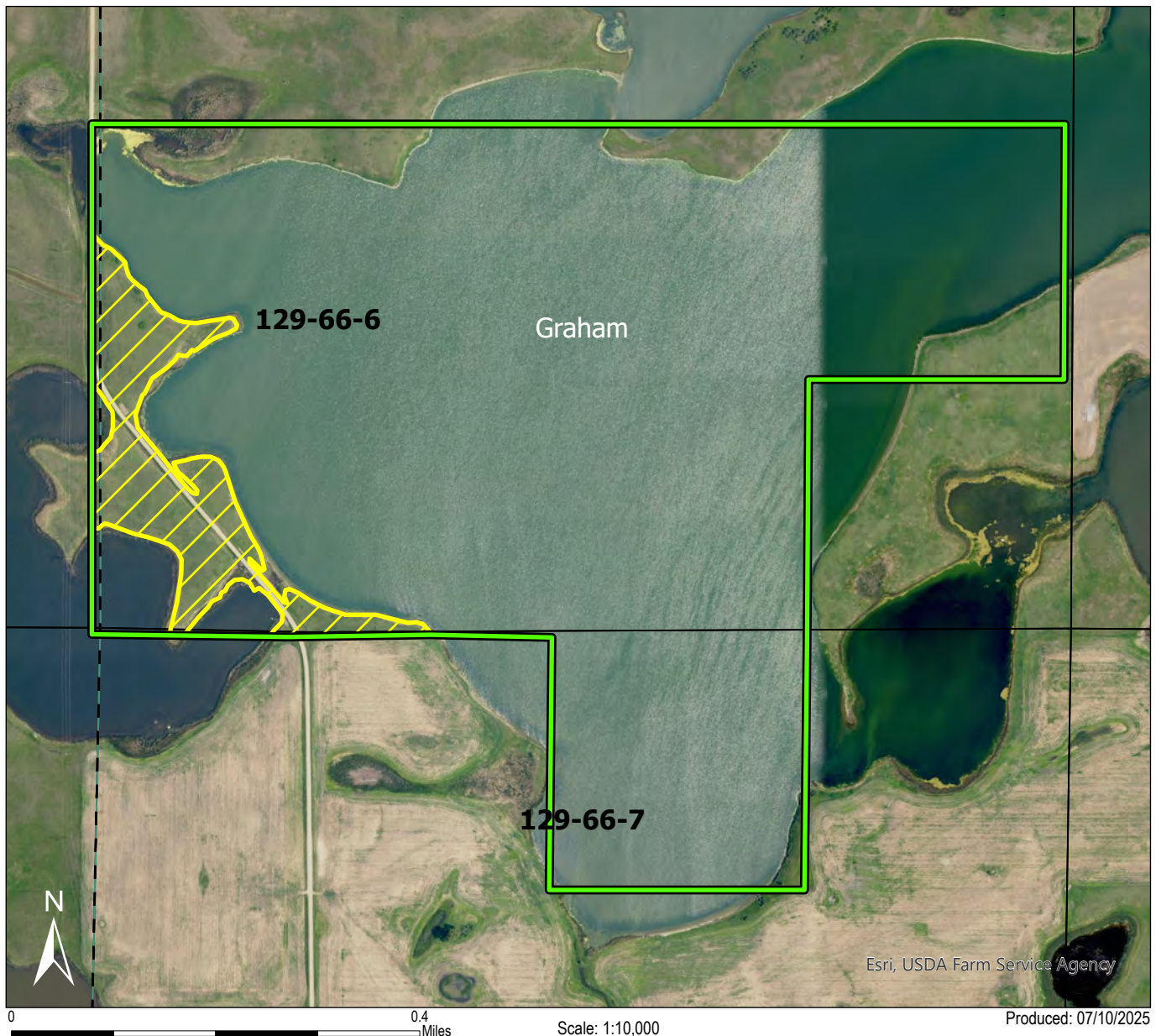


U.S. Fish & Wildlife Service

Kulm Wetland Management District 2025 Haying Map

Dickey County  
Albertha Township

## GRAHAM WPA: COOPERATOR TBD





**Haying period is August 1st through 21st.**  
**Bale and equipment removal date is September 15th.**

**Approximate hay acreage is: 20 acres**

**Hayed acreage will be measured by GPS.**

**FWS contact: Krista Lundgren, 701-647-2866 (office),  
701-830-0038 (cell)**

-  WPA Boundary
-  Haying Area

The USFWS makes no warranty for use of this map and cannot be held liable for actions or decisions based on map content.  
Produced by Kulm Wetland Management District.  
Datum: NAD 83  
Copyright © 1995-2023 Esri and its licensors.  
All rights reserved.  
Basemap: NAIP Aerial Imagery 2023



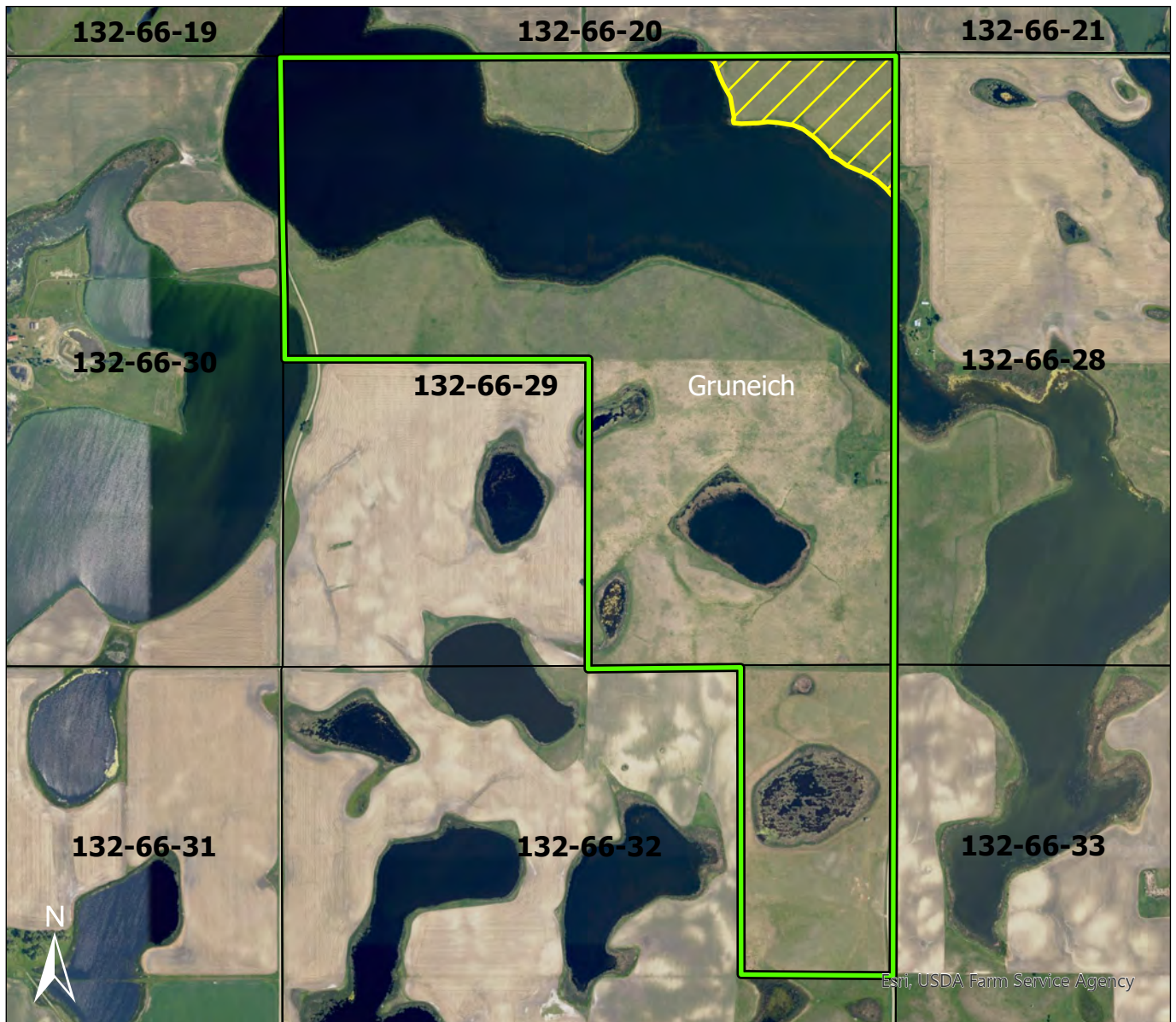
U.S. Fish & Wildlife Service

Kulm Wetland Management District 2025 Haying Map



Dickey County

Northwest Township

## GRUNEICH WPA: COOPERATOR TBD



0 0.75 Miles Scale: 1:17,000 Produced: 07/10/2025

-  WPA Boundary
-  Haying Area

**Haying period is August 1st through 21st.**  
**Bale and equipment removal date is September 15th.**

**Approximate hay acreage is: 26 acres**

**Hayed acreage will be measured by GPS.**

**FWS contact: Krista Lundgren, 701-647-2866 (office),  
701-830-0038 (cell)**

The USFWS makes no warranty for use of this map and cannot be held liable for actions or decisions based on map content.  
Produced by Kulm Wetland Management District.  
Datum: NAD 83  
Copyright © 1995-2023 Esri and its licensors.  
All rights reserved.  
Basemap: NAIP Aerial Imagery 2023





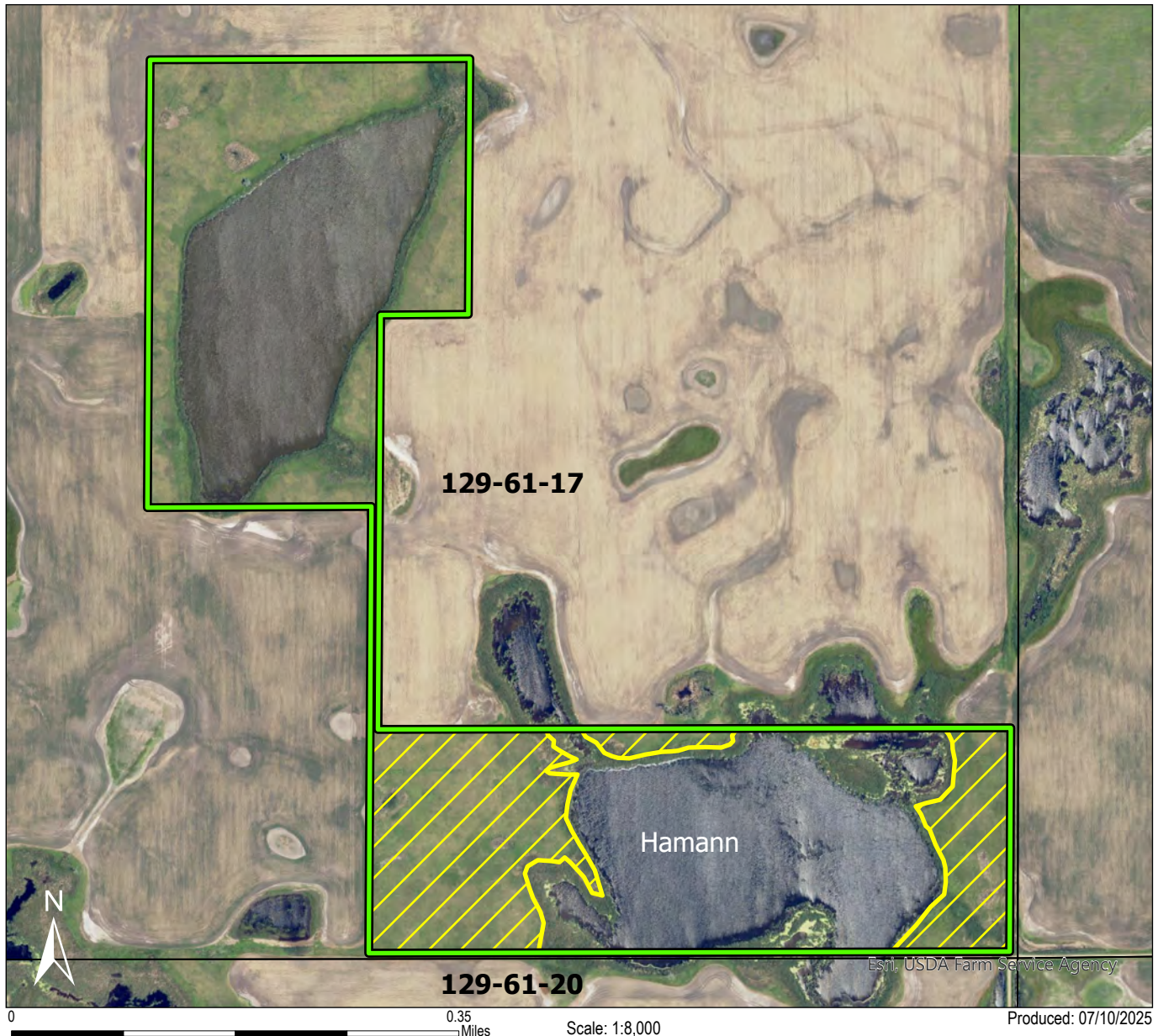
U.S. Fish & Wildlife Service

Kulm Wetland Management District 2025 Haying Map

Dickey County

Ada Township

## HAMANN WPA: COOPERATOR TBD





**Haying period is August 1st through 21st.**  
**Bale and equipment removal date is September 15th.**

**Approximate hay acreage is: 6-22 acres. Portions of unit may not be accessible to all applicants.**

**Hayed acreage will be measured by GPS.**

**FWS contact: Krista Lundgren, 701-647-2866 (office),  
701-830-0038 (cell)**

-  WPA Boundary
-  Haying Area

The USFWS makes no warranty for use of this map and cannot be held liable for actions or decisions based on map content.  
Produced by Kulm Wetland Management District.  
Datum: NAD 83  
Copyright © 1995-2023 Esri and its licensors.  
All rights reserved.  
Basemap: NAIP Aerial Imagery 2023



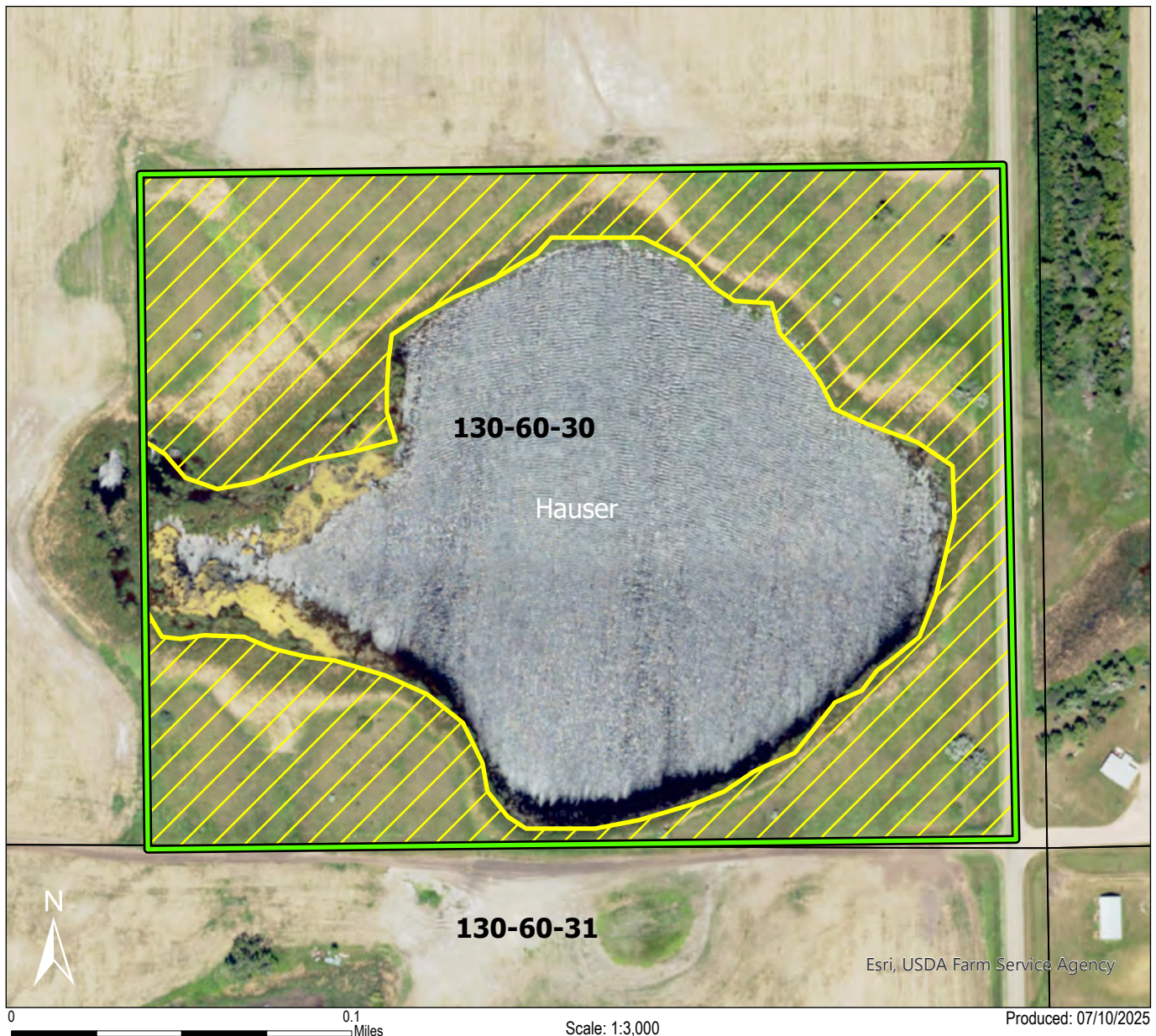


U.S. Fish & Wildlife Service

Kulm Wetland Management District 2025 Haying Map

Dickey County  
Hudson Township

## HAUSER WPA: COOPERATOR TBD





**Haying period is August 1st through 21st.**  
**Bale and equipment removal date is September 15th.**

**Approximate hay acreage is: 16 acres**

**Hayed acreage will be measured by GPS.**

**FWS contact: Krista Lundgren, 701-647-2866 (office),  
701-830-0038 (cell)**

 WPA Boundary  
 Haying Area

The USFWS makes no warranty for use of this map and cannot be held liable for actions or decisions based on map content.  
Produced by Kulm Wetland Management District.  
Datum: NAD 83  
Copyright © 1995-2023 Esri and its licensors.  
All rights reserved.  
Basemap: NAIP Aerial Imagery 2023



U.S. Fish & Wildlife Service

Kulm Wetland Management District 2025 Haying Map

Dickey County

Ada Township

## HOLMES WPA: COOPERATOR TBD





**Haying period is August 1st through 21st.**  
**Bale and equipment removal date is September 15th.**

**Approximate hay acreage is: 14-16 acres. Portions of unit may not be accessible to all applicants.**

**Hayed acreage will be measured by GPS.**

**FWS contact: Krista Lundgren, 701-647-2866 (office),  
701-830-0038 (cell)**

-  WPA Boundary
-  Haying Area

The USFWS makes no warranty for use of this map and cannot be held liable for actions or decisions based on map content.  
Produced by Kulm Wetland Management District.  
Datum: NAD 83  
Copyright © 1995-2023 Esri and its licensors.  
All rights reserved.  
Basemap: NAIP Aerial Imagery 2023





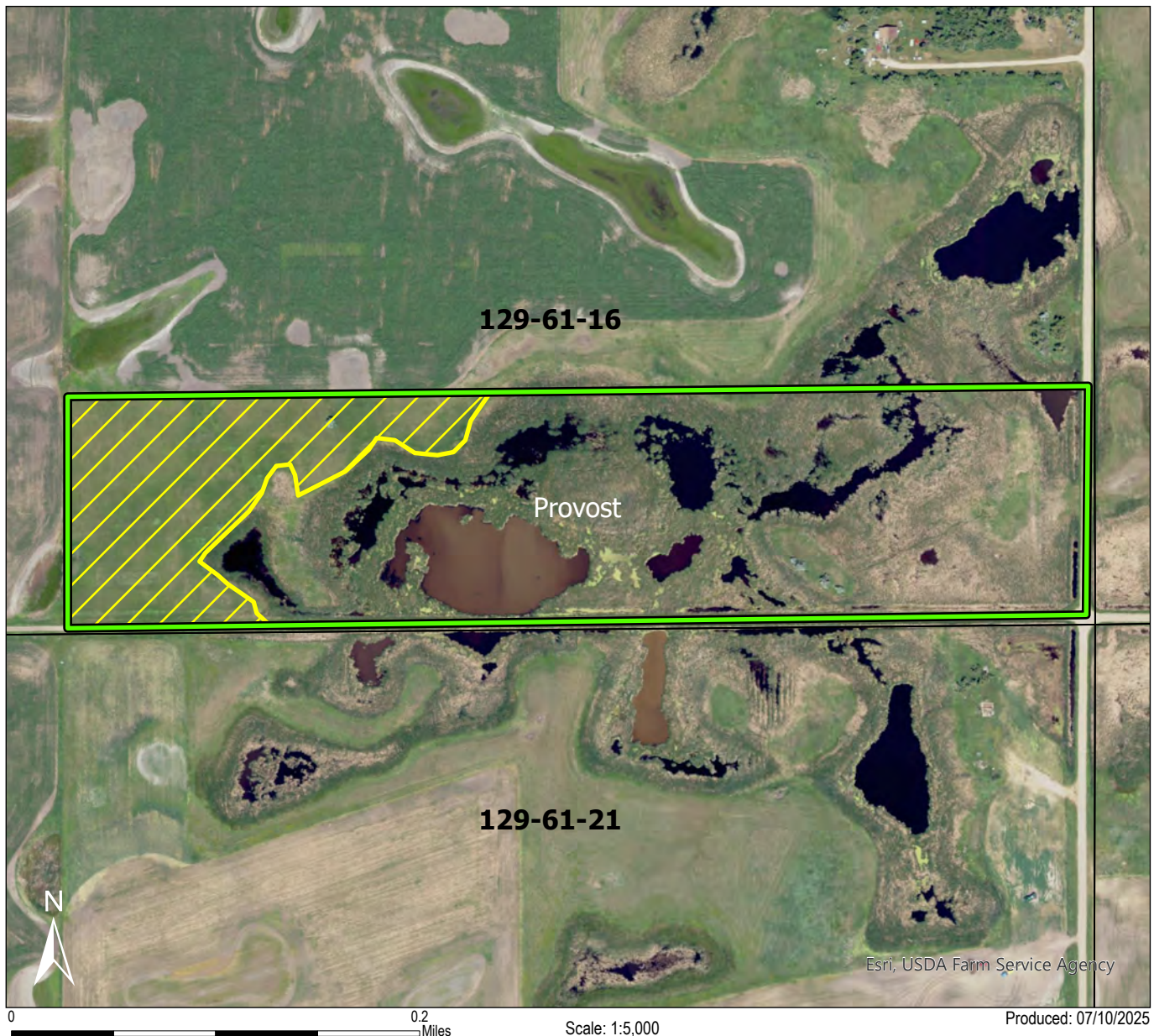
U.S. Fish & Wildlife Service

Kulm Wetland Management District 2025 Haying Map

Dickey County

Ada Township

## PROVOST WPA: COOPERATOR TBD





**Haying period is August 1st through 21st.**  
**Bale and equipment removal date is September 15th.**

**Approximate hay acreage is: 8 acres**

**Hayed acreage will be measured by GPS.**

**FWS contact: Krista Lundgren, 701-647-2866 (office),  
701-830-0038 (cell)**

-  WPA Boundary
-  Haying Area

The USFWS makes no warranty for use of this map and cannot be held liable for actions or decisions based on map content.  
Produced by Kulm Wetland Management District.  
Datum: NAD 83  
Copyright © 1995-2023 Esri and its licensors.  
All rights reserved.  
Basemap: NAIP Aerial Imagery 2023



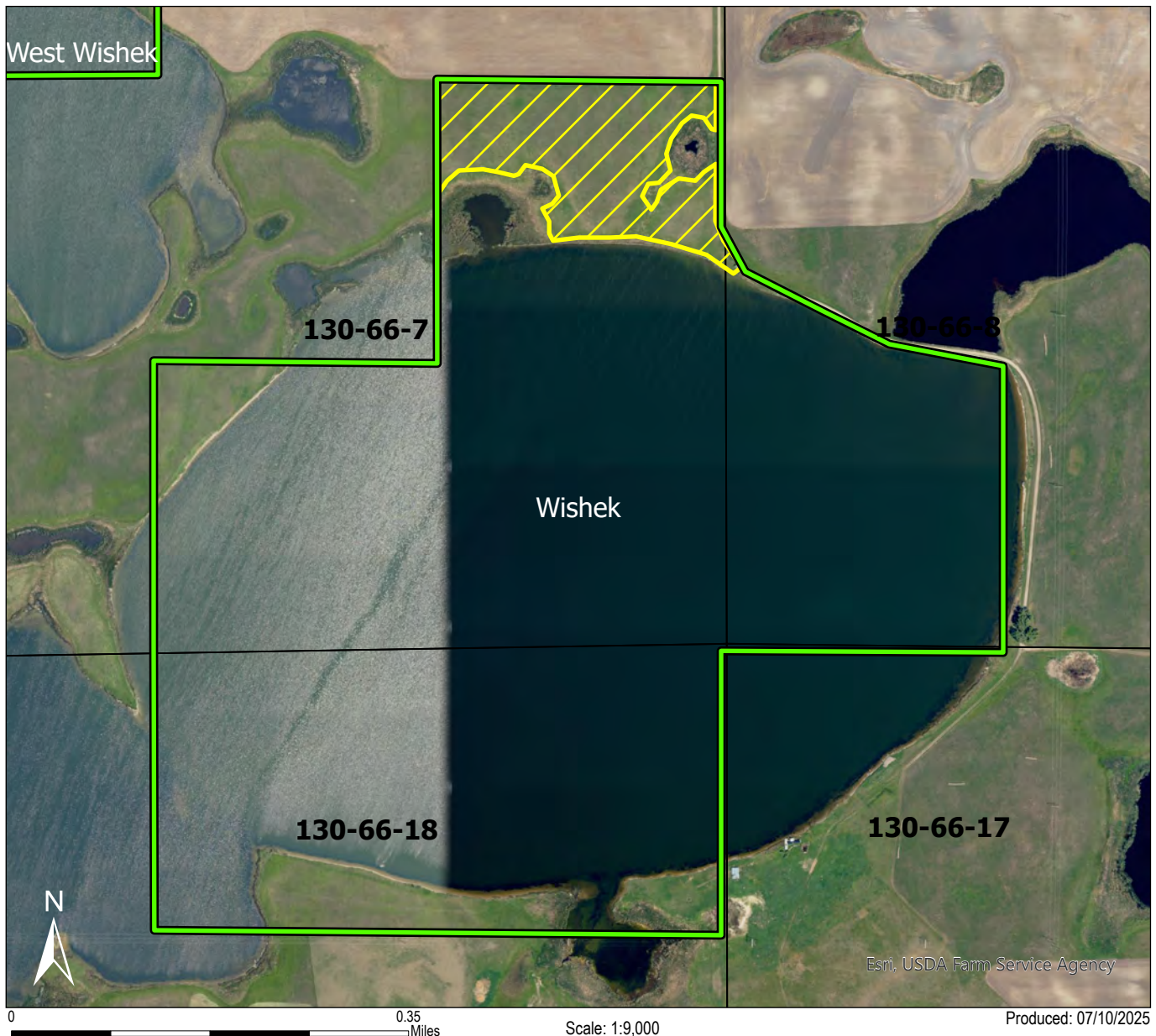
U.S. Fish & Wildlife Service

Kulm Wetland Management District 2025 Haying Map

Dickey County

Spring Valley Township

## WISHEK WPA: COOPERATOR TBD





**Haying period is August 1st through 21st.**  
**Bale and equipment removal date is September 15th.**

**Approximate hay acreage is: 17 acres**

**Hayed acreage will be measured by GPS.**

**FWS contact: Krista Lundgren, 701-647-2866 (office),  
701-830-0038 (cell)**

 WPA Boundary  
 Haying Area

The USFWS makes no warranty for use of this map and cannot be held liable for actions or decisions based on map content.  
Produced by Kulm Wetland Management District.  
Datum: NAD 83  
Copyright © 1995-2023 Esri and its licensors.  
All rights reserved.  
Basemap: NAIP Aerial Imagery 2023





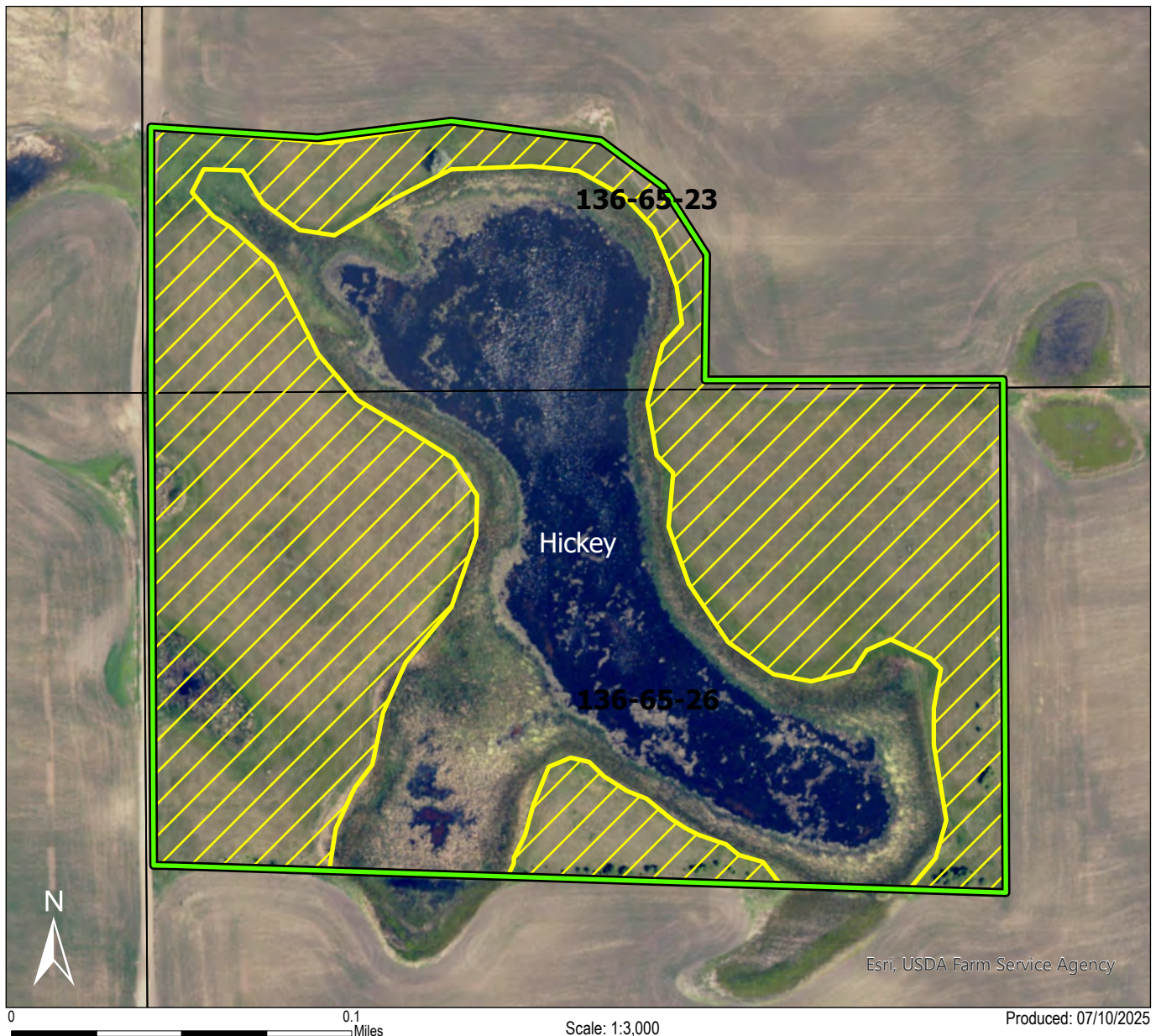
U.S. Fish & Wildlife Service

Kulm Wetland Management District 2025 Haying Map

LaMoure County

Mikkelson Township

## HICKEY WPA: COOPERATOR TBD





**Haying period is August 1st through 21st.  
Bale and equipment removal date is September 15th.**

**Approximate hay acreage is: 17 acres. Small portion  
of unit may not be accessible to all applicants.**

**Hayed acreage will be measured by GPS.**

**FWS contact: Krista Lundgren, 701-647-2866 (office),  
701-830-0038 (cell)**

-  WPA Boundary
-  Haying Area

The USFWS makes no warranty for use of this map and cannot be held liable for actions or decisions based on map content.  
Produced by Kulm Wetland Management District.  
Datum: NAD 83  
Copyright © 1995-2023 Esri and its licensors.  
All rights reserved.  
Basemap: NAIP Aerial Imagery 2023



U.S. Fish & Wildlife Service

Kulm Wetland Management District 2025 Haying Map



LaMoure County

Grandview Township

## WENDT WPA: COOPERATOR TBD



0 0.15 Miles Scale: 1:4,000 Produced: 07/10/2025

-  WPA Boundary
-  Haying Area

**Haying period is August 1st through 21st.**  
**Bale and equipment removal date is September 15th.**

**Approximate hay acreage is: 10 acres**

**Hayed acreage will be measured by GPS.**

**FWS contact: Krista Lundgren, 701-647-2866 (office),  
701-830-0038 (cell)**

The USFWS makes no warranty for use of this map and cannot be held liable for actions or decisions based on map content.  
Produced by Kulm Wetland Management District.  
Datum: NAD 83  
Copyright © 1995-2023 Esri and its licensors.  
All rights reserved.  
Basemap: NAIP Aerial Imagery 2023





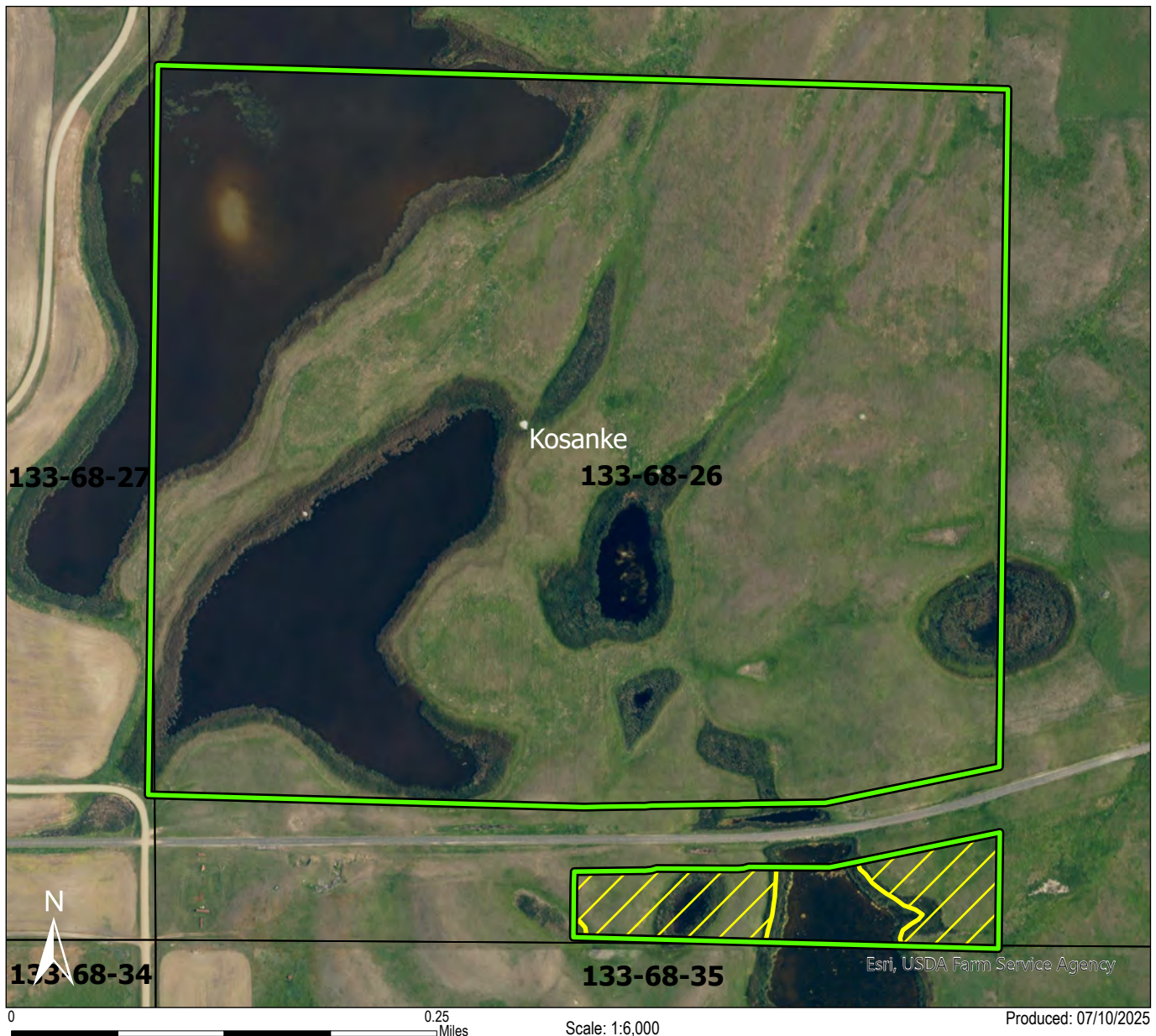
U.S. Fish & Wildlife Service

Kulm Wetland Management District 2025 Haying Map

Logan County

Lautt Township

## KOSANKE WPA: COOPERATOR TBD





**Haying period is August 1st through 21st.**  
**Bale and equipment removal date is September 15th.**

**Approximate hay acreage is: 3 acres**

**Hayed acreage will be measured by GPS.**

**FWS contact: Krista Lundgren, 701-647-2866 (office),  
701-830-0038 (cell)**

-  WPA Boundary
-  Haying Area

The USFWS makes no warranty for use of this map and cannot be held liable for actions or decisions based on map content.  
Produced by Kulm Wetland Management District.  
Datum: NAD 83  
Copyright © 1995-2023 Esri and its licensors.  
All rights reserved.  
Basemap: NAIP Aerial Imagery 2023



U.S. Fish & Wildlife Service

Kulm Wetland Management District 2025 Haying Map



Logan County

Finn Township

## KOSKINIEMI WPA: COOPERATOR TBD



0 0.35 Miles Scale: 1:8,000 Produced: 07/10/2025

-  WPA Boundary
-  Haying Area

**Haying period is August 1st through 21st.**  
**Bale and equipment removal date is September 15th.**

**Approximate hay acreage is: 4 acres**

**Hayed acreage will be measured by GPS.**

**FWS contact: Krista Lundgren, 701-647-2866 (office),  
701-830-0038 (cell)**

The USFWS makes no warranty for use of this map and cannot be held liable for actions or decisions based on map content.  
Produced by Kulm Wetland Management District.  
Datum: NAD 83  
Copyright © 1995-2023 Esri and its licensors.  
All rights reserved.  
Basemap: NAIP Aerial Imagery 2023





U.S. Fish & Wildlife Service

Kulm Wetland Management District 2025 Haying Map



Logan County

Moos Township

## LOGAN PDL 1A WPA: COOPERATOR TBD



0 0.25 Miles Scale: 1:6,000 Produced: 07/10/2025

-  WPA Boundary
-  Haying Area

**Haying period is August 1st through 21st.**  
**Bale and equipment removal date is September 15th.**

**Approximate hay acreage is: 1 acre**

**Hayed acreage will be measured by GPS.**

**FWS contact: Krista Lundgren, 701-647-2866 (office),  
701-830-0038 (cell)**

The USFWS makes no warranty for use of this map and cannot be held liable for actions or decisions based on map content.  
Produced by Kulm Wetland Management District.  
Datum: NAD 83  
Copyright © 1995-2023 Esri and its licensors.  
All rights reserved.  
Basemap: NAIP Aerial Imagery 2023



U.S. Fish & Wildlife Service

Kulm Wetland Management District 2025 Haying Map

Logan County  
Neudorf Township

## LOGAN PDL 1B WPA: COOPERATOR TBD





**Haying period is August 1st through 21st.**  
**Bale and equipment removal date is September 15th.**

**Approximate hay acreage is: 6 acres**

**Hayed acreage will be measured by GPS.**

**FWS contact: Krista Lundgren, 701-647-2866 (office),  
701-830-0038 (cell)**

 WPA Boundary  
 Haying Area

The USFWS makes no warranty for use of this map and cannot be held liable for actions or decisions based on map content.  
Produced by Kulm Wetland Management District.  
Datum: NAD 83  
Copyright © 1995-2023 Esri and its licensors.  
All rights reserved.  
Basemap: NAIP Aerial Imagery 2023





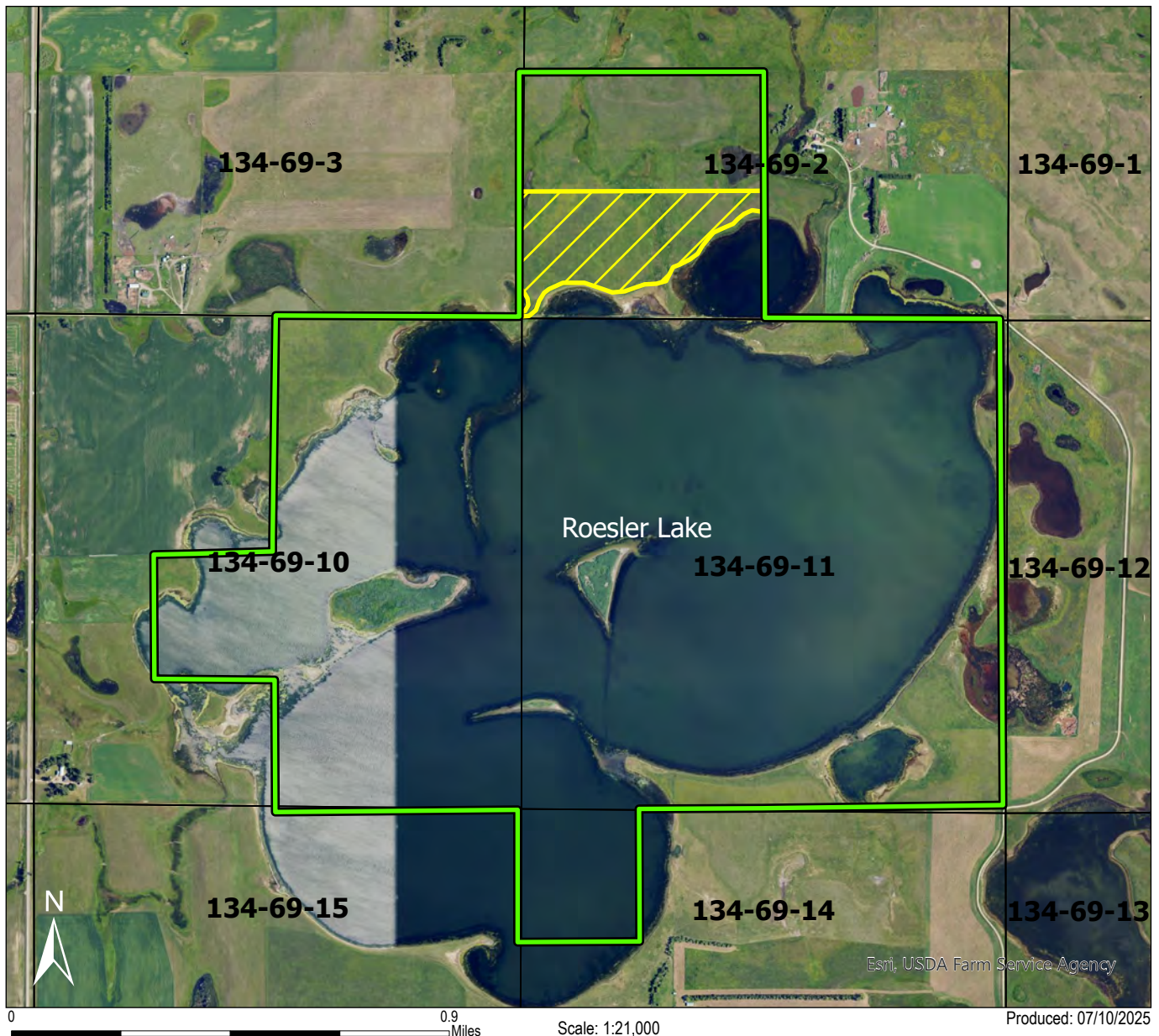
U.S. Fish & Wildlife Service

Kulm Wetland Management District 2025 Haying Map

Logan County

Hillsburg Township

## ROESLER LAKE WPA: COOPERATOR TBD





**Haying period is August 1st through 21st.**  
**Bale and equipment removal date is September 15th.**

**Approximate hay acreage is: 30 acres. Unit may not be accessible to all applicants.**

**Hayed acreage will be measured by GPS.**

**FWS contact: Krista Lundgren, 701-647-2866 (office),  
701-830-0038 (cell)**

-  WPA Boundary
-  Haying Area

The USFWS makes no warranty for use of this map and cannot be held liable for actions or decisions based on map content.  
Produced by Kulm Wetland Management District.  
Datum: NAD 83  
Copyright © 1995-2023 Esri and its licensors.  
All rights reserved.  
Basemap: NAIP Aerial Imagery 2023



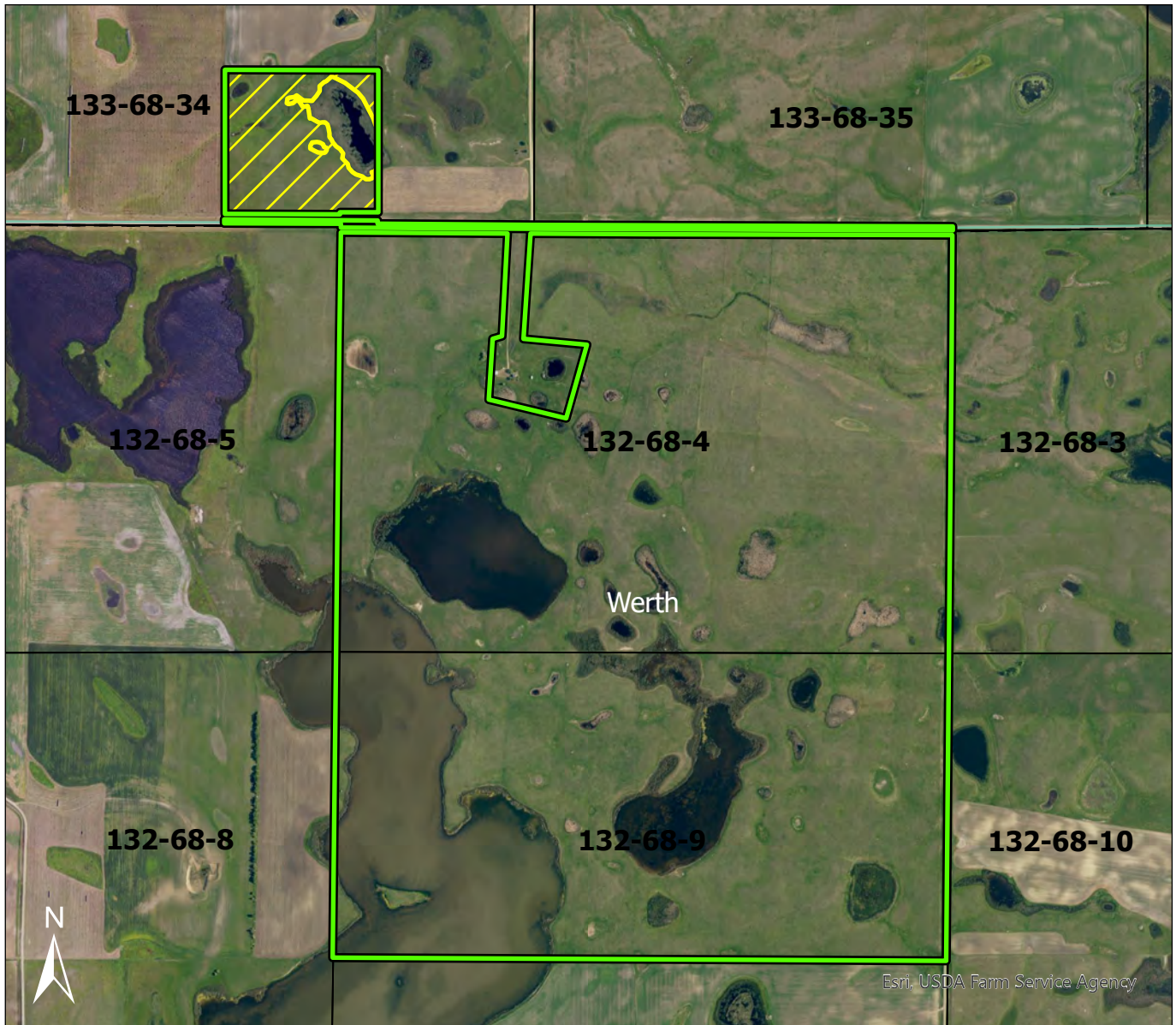
U.S. Fish & Wildlife Service

Kulm Wetland Management District 2025 Haying Map

Logan County

Lautt Township

## WERTH WPA: COOPERATOR TBD



Produced: 07/10/2025

Scale: 1:17,000



0.75  
Miles

**Haying period is August 1st through 21st.  
Bale and equipment removal date is September 15th.**

**Approximate hay acreage is: 30 acres**

**Hayed acreage will be measured by GPS.**

**FWS contact: Krista Lundgren, 701-647-2866 (office),  
701-830-0038 (cell)**

-  WPA Boundary
-  Haying Area

The USFWS makes no warranty for use of this map and cannot be held liable for actions or decisions based on map content.  
Produced by Kulm Wetland Management District.  
Datum: NAD 83  
Copyright © 1995-2023 Esri and its licensors.  
All rights reserved.  
Basemap: NAIP Aerial Imagery 2023





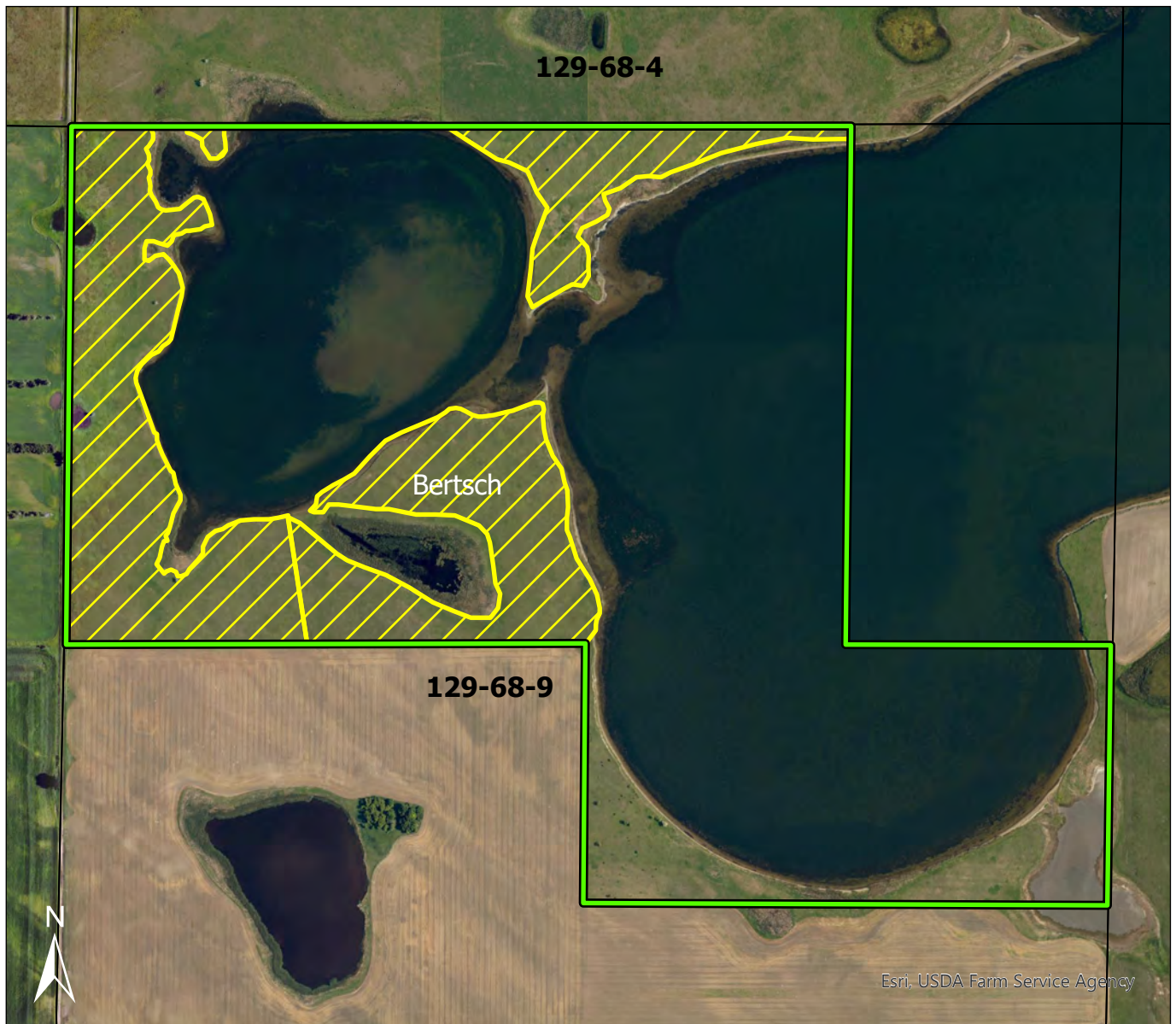
U.S. Fish & Wildlife Service

Kulm Wetland Management District 2025 Haying Map

McIntosh County

Jewell Township



## BERTSCH WPA: COOPERATOR TBD



0 0.4 Miles

Scale: 1:10,000

Produced: 07/10/2025

-  WPA Boundary
-  Haying Area

**Haying period is August 1st through 21st.**  
**Bale and equipment removal date is September 15th.**

**Approximate hay acreage is: 60-70 acres. Portions of unit may not be accessible to all applicants.**

**Hayed acreage will be measured by GPS.**

**FWS contact: Krista Lundgren, 701-647-2866 (office), 701-830-0038 (cell)**

The USFWS makes no warranty for use of this map and cannot be held liable for actions or decisions based on map content.  
Produced by Kulm Wetland Management District.  
Datum: NAD 83  
Copyright © 1995-2023 Esri and its licensors.  
All rights reserved.  
Basemap: NAIP Aerial Imagery 2023



U.S. Fish & Wildlife Service

Kulm Wetland Management District 2025 Haying Map

McIntosh County

Iowa Township

## EDNA WPA: COOPERATOR TBD





**Haying period is August 1st through 21st.**  
**Bale and equipment removal date is September 15th.**

**Approximate hay acreage is: 9 acres. Portions of unit may not be accessible to all applicants.**

**Hayed acreage will be measured by GPS.**

**FWS contact: Krista Lundgren, 701-647-2866 (office), 701-830-0038 (cell)**

-  WPA Boundary
-  Haying Area

The USFWS makes no warranty for use of this map and cannot be held liable for actions or decisions based on map content.  
Produced by Kulm Wetland Management District.  
Datum: NAD 83  
Copyright © 1995-2023 Esri and its licensors.  
All rights reserved.  
Basemap: NAIP Aerial Imagery 2023





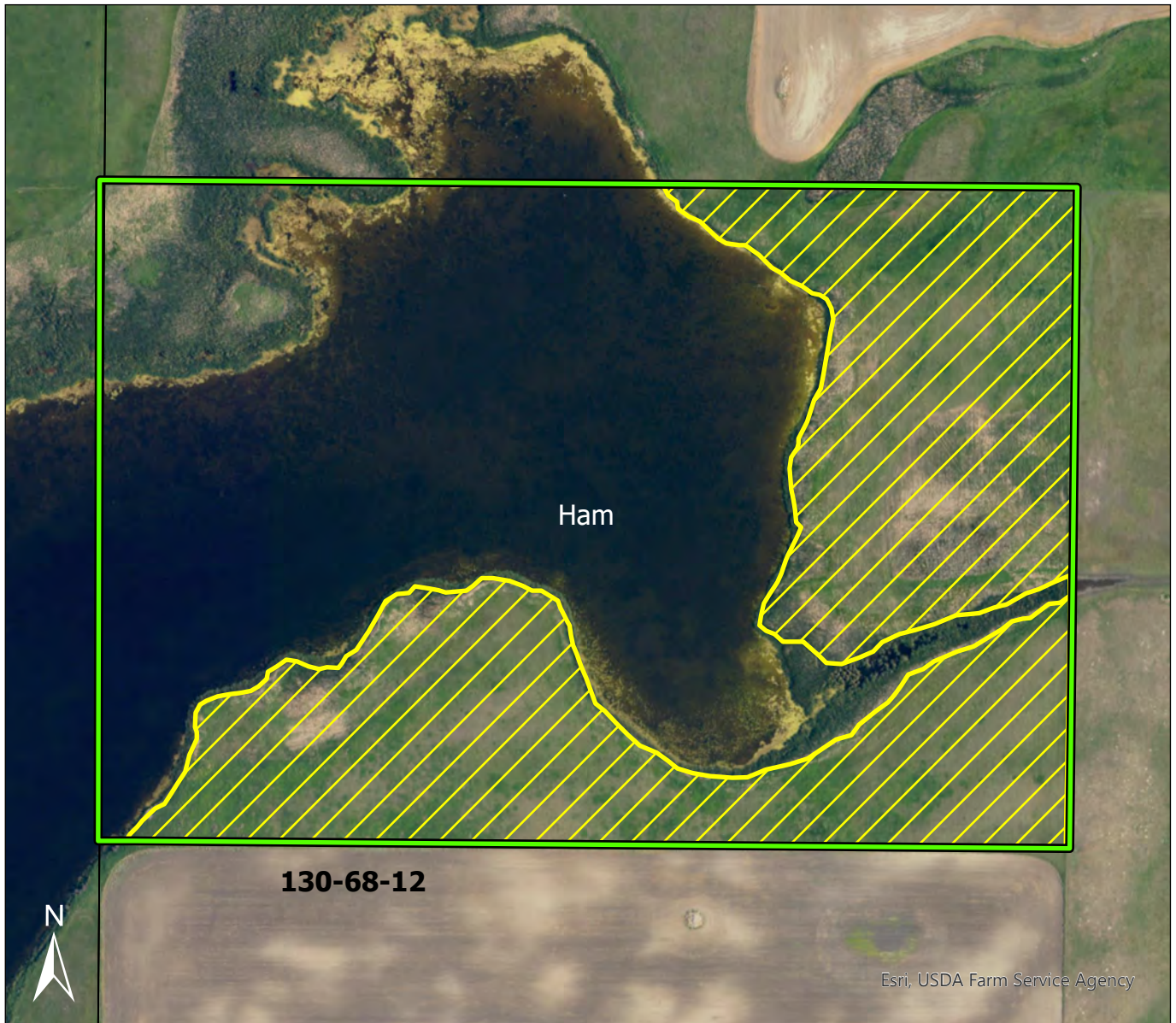
U.S. Fish & Wildlife Service

Kulm Wetland Management District 2025 Haying Map



McIntosh County

Iowa Township

## HAM WPA: COOPERATOR TBD



0 0.15 Miles Scale: 1:4,000 Produced: 07/10/2025

-  WPA Boundary
-  Haying Area

**Haying period is August 1st through 21st.**  
**Bale and equipment removal date is September 15th.**

**Approximate hay acreage is: 26 acres. Portions of unit may not be accessible to all applicants.**

**Hayed acreage will be measured by GPS.**

**FWS contact: Krista Lundgren, 701-647-2866 (office), 701-830-0038 (cell)**

The USFWS makes no warranty for use of this map and cannot be held liable for actions or decisions based on map content.  
Produced by Kulm Wetland Management District.  
Datum: NAD 83  
Copyright © 1995-2023 Esri and its licensors.  
All rights reserved.  
Basemap: NAIP Aerial Imagery 2023





U.S. Fish & Wildlife Service

Kulm Wetland Management District 2025 Haying Map

McIntosh County

Myrtle Township

## HILDEBRAND WPA: COOPERATOR TBD





**Haying period is August 1st through 21st.**  
**Bale and equipment removal date is September 15th.**

**Approximate hay acreage is: 87 acres.**

**Hayed acreage will be measured by GPS.**

**FWS contact: Krista Lundgren, 701-647-2866 (office),  
701-830-0038 (cell)**

-  WPA Boundary
-  Haying Area

The USFWS makes no warranty for use of this map and cannot be held liable for actions or decisions based on map content.  
Produced by Kulm Wetland Management District.  
Datum: NAD 83  
Copyright © 1995-2023 Esri and its licensors.  
All rights reserved.  
Basemap: NAIP Aerial Imagery 2023





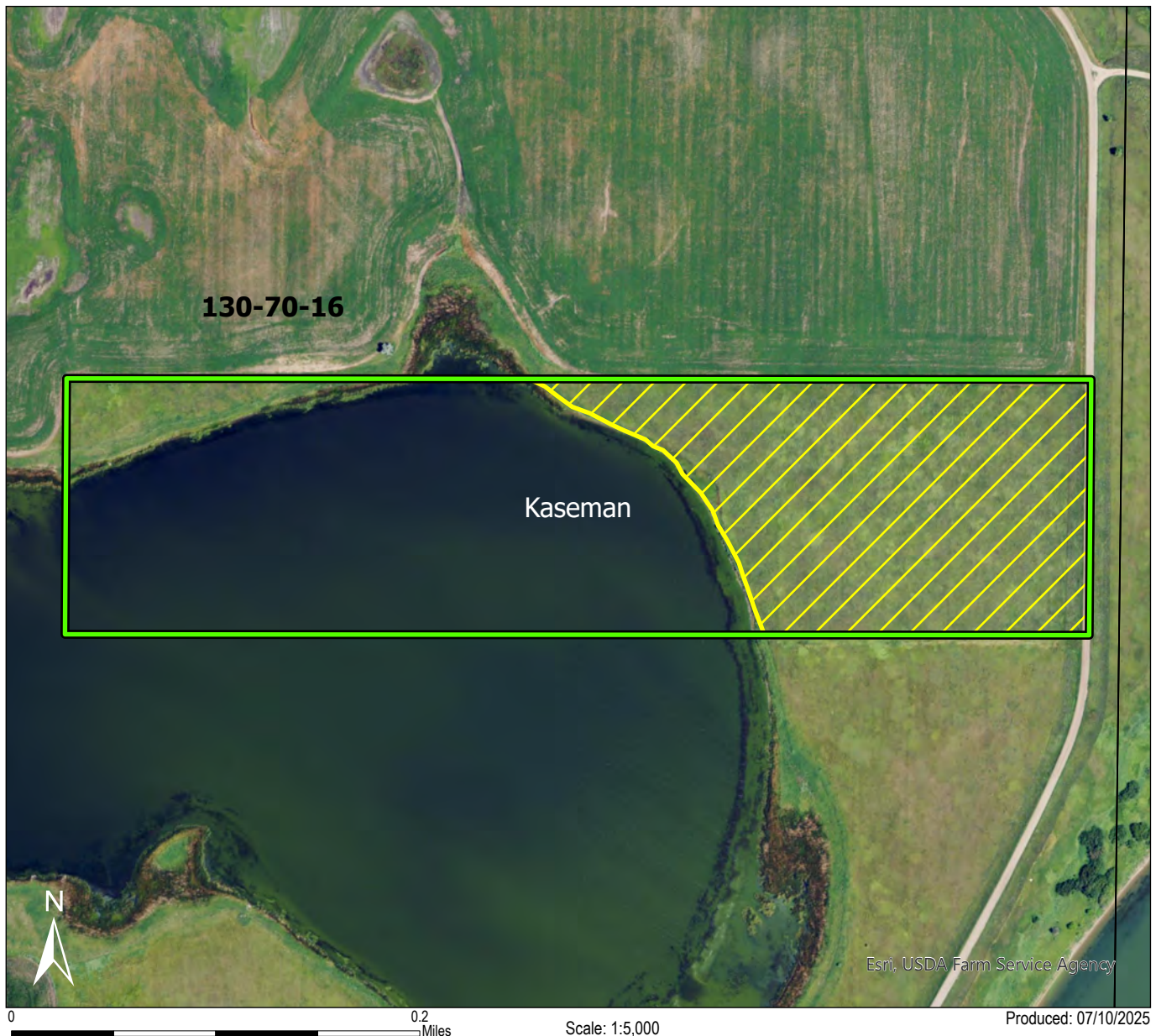
U.S. Fish & Wildlife Service

Kulm Wetland Management District 2025 Haying Map

McIntosh County

Hoskins Township

## KASEMAN WPA: COOPERATOR





**Haying period is August 1st through 21st.**  
**Bale and equipment removal date is September 15th.**

**Approximate hay acreage is: 15 acres**

**Hayed acreage will be measured by GPS.**

**FWS contact: Krista Lundgren, 701-647-2866 (office),  
701-830-0038 (cell)**

 WPA Boundary  
 Haying Area

The USFWS makes no warranty for use of this map and cannot be held liable for actions or decisions based on map content.  
Produced by Kulm Wetland Management District.  
Datum: NAD 83  
Copyright © 1995-2023 Esri and its licensors.  
All rights reserved.  
Basemap: NAIP Aerial Imagery 2023





U.S. Fish & Wildlife Service

Kulm Wetland Management District 2025 Haying Map

McIntosh County

Myrtle Township

## KESSEL WPA: COOPERATOR TBD



0 0.35 Miles Scale: 1:9,000 Produced: 07/10/2025

- WPA Boundary
- Haying Area

**Haying period is August 1st through 21st.**  
**Bale and equipment removal date is September 15th.**

**Approximate hay acreage is: 78 acres**

**Hayed acreage will be measured by GPS.**

**FWS contact: Krista Lundgren, 701-647-2866 (office),  
701-830-0038 (cell)**

The USFWS makes no warranty for use of this map and cannot be held liable for actions or decisions based on map content.  
Produced by Kulm Wetland Management District.  
Datum: NAD 83  
Copyright © 1995-2023 Esri and its licensors.  
All rights reserved.  
Basemap: NAIP Aerial Imagery 2023





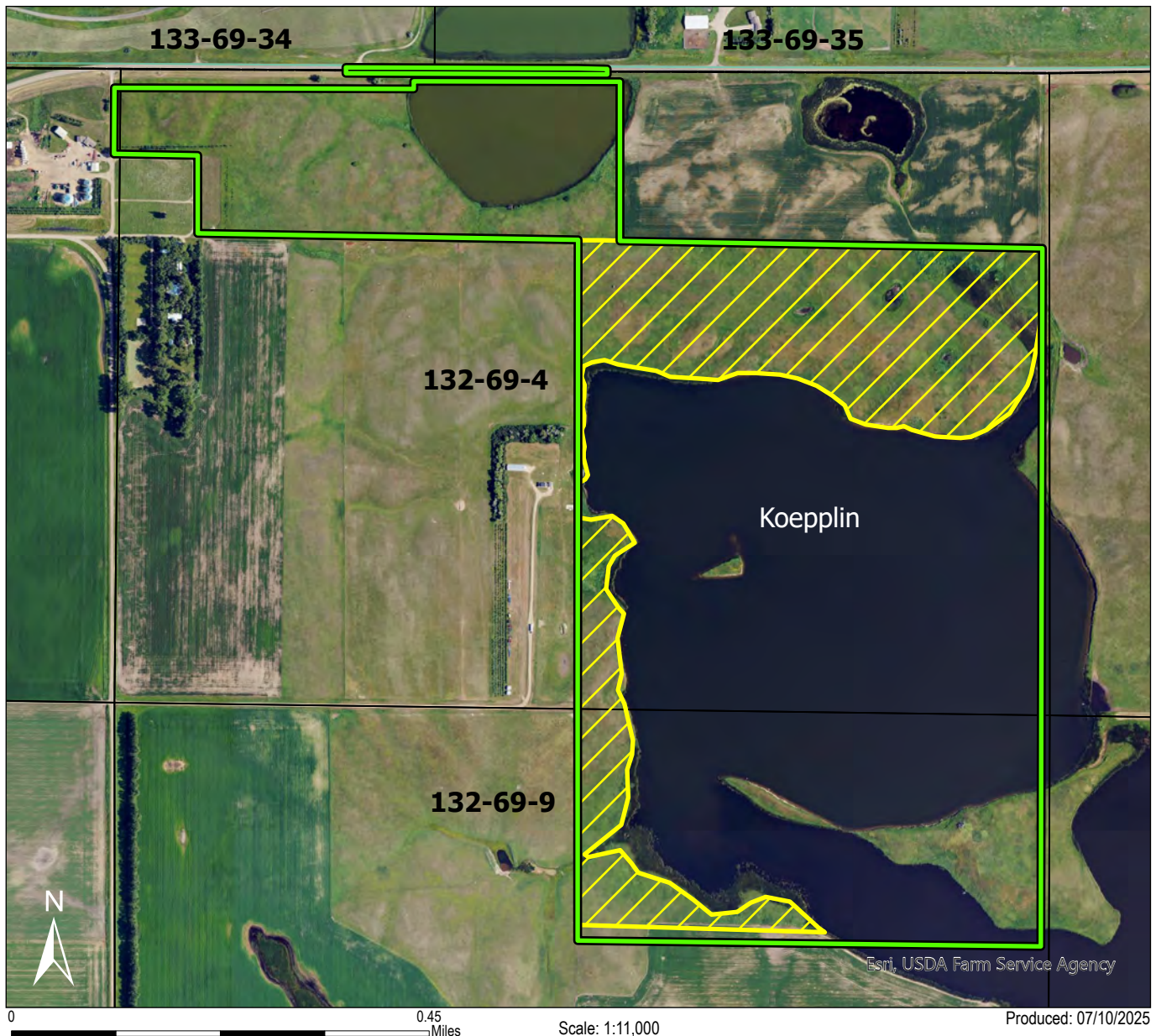
U.S. Fish & Wildlife Service

Kulm Wetland Management District 2025 Haying Map

McIntosh County

Lowenthal Township

## KOEPLIN WPA: COOPERATOR TBD





**Haying period is August 1st through 21st.**  
**Bale and equipment removal date is September 15th.**

**Approximate hay acreage is: 70 acres**

**Hayed acreage will be measured by GPS.**

**FWS contact: Krista Lundgren, 701-647-2866 (office),  
701-830-0038 (cell)**

-  WPA Boundary
-  Haying Area

The USFWS makes no warranty for use of this map and cannot be held liable for actions or decisions based on map content.  
Produced by Kulm Wetland Management District.  
Datum: NAD 83  
Copyright © 1995-2023 Esri and its licensors.  
All rights reserved.  
Basemap: NAIP Aerial Imagery 2023



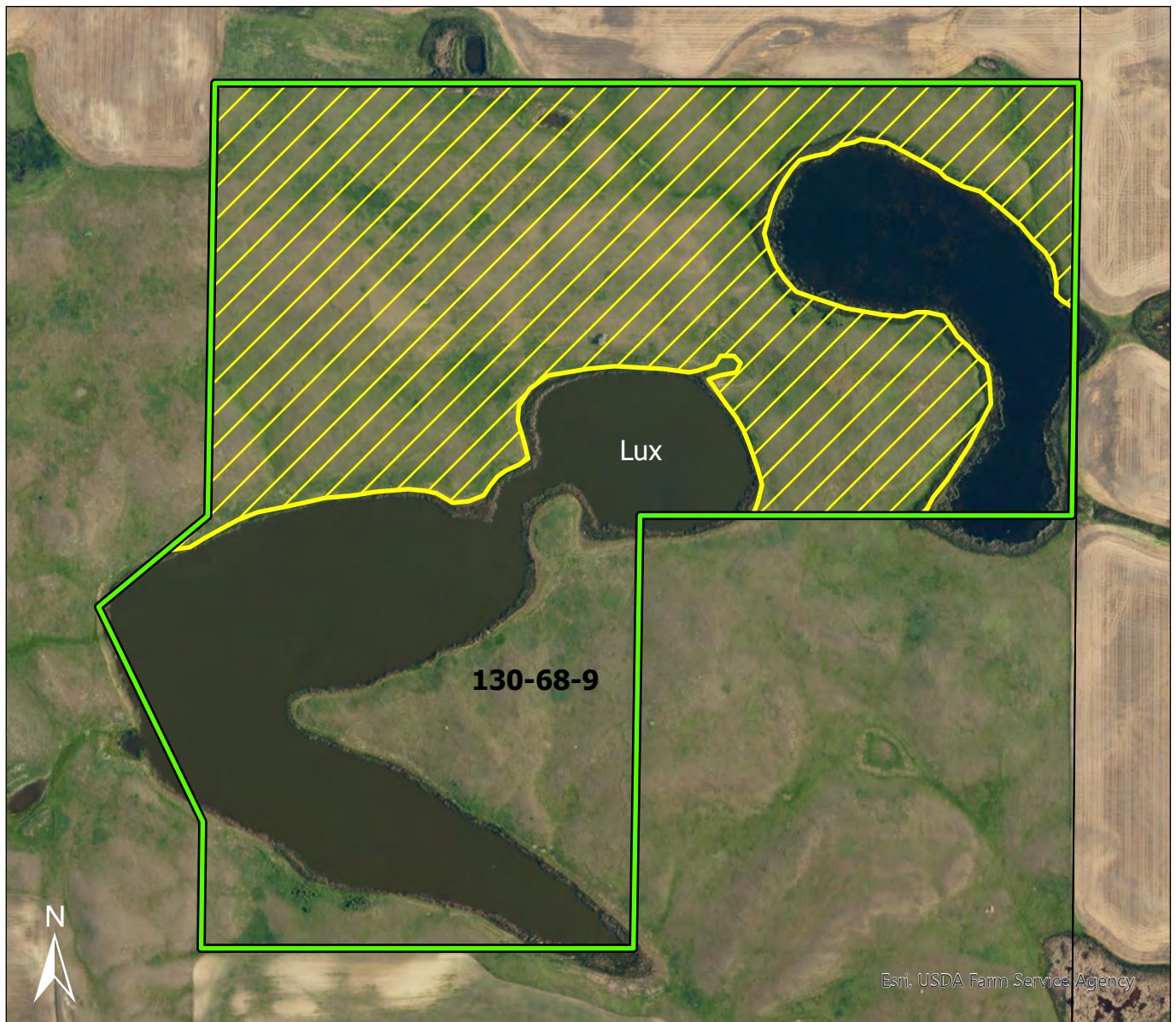
U.S. Fish & Wildlife Service

Kulm Wetland Management District 2025 Haying Map



McIntosh County

Iowa Township

## LUX WPA: COOPERATOR TBD



0 0.25 Miles Scale: 1:6,000 Produced: 07/10/2025

-  WPA Boundary
-  Haying Area

**Haying period is August 1st through 21st.**  
**Bale and equipment removal date is September 15th.**

**Approximate hay acreage is: 59 acres**

**Hayed acreage will be measured by GPS.**

**FWS contact: Krista Lundgren, 701-647-2866 (office),  
701-830-0038 (cell)**

The USFWS makes no warranty for use of this map and cannot be held liable for actions or decisions based on map content.  
Produced by Kulm Wetland Management District.  
Datum: NAD 83  
Copyright © 1995-2023 Esri and its licensors.  
All rights reserved.  
Basemap: NAIP Aerial Imagery 2023





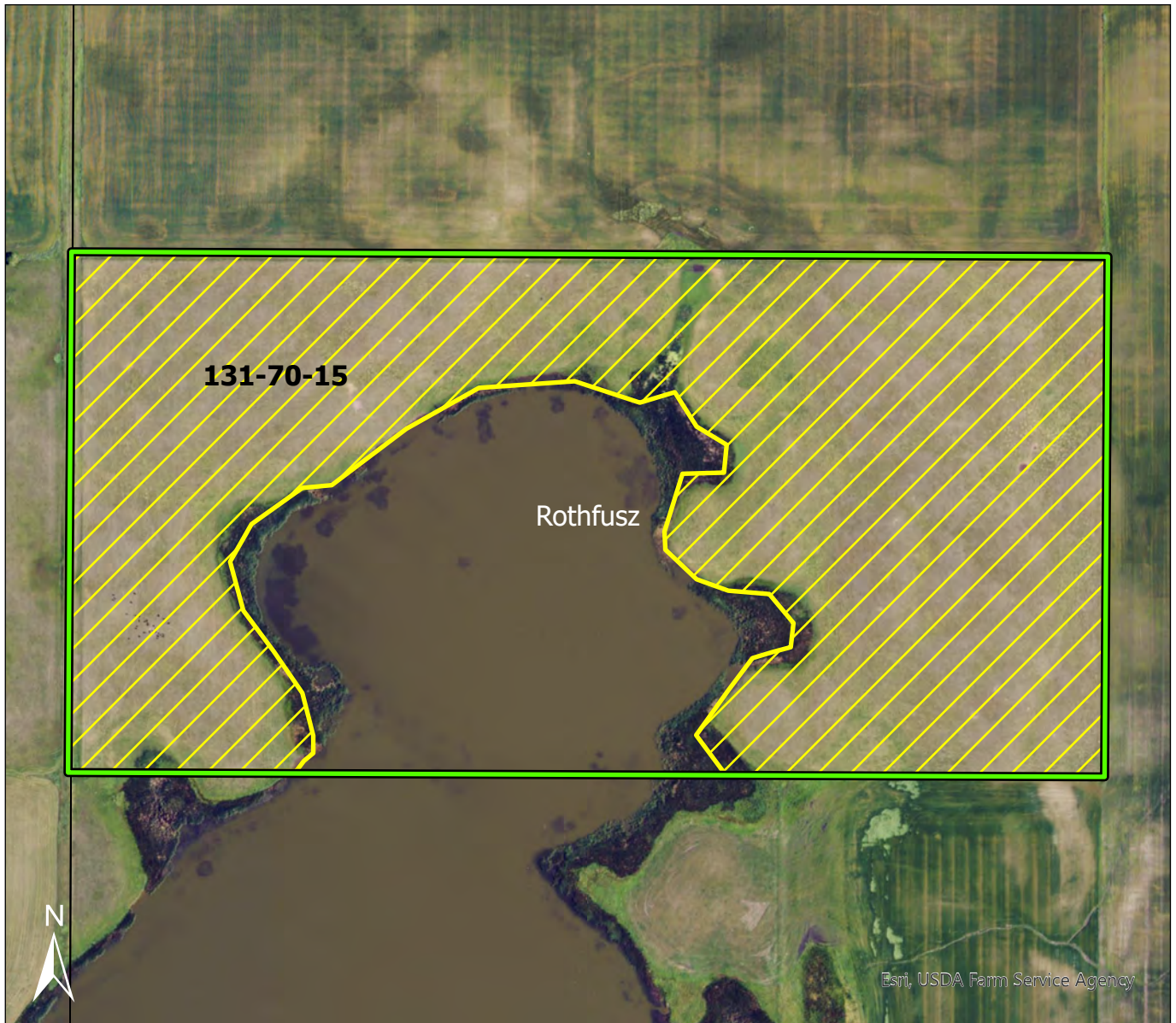
U.S. Fish & Wildlife Service

Kulm Wetland Management District 2025 Haying Map

McIntosh County

Danzig Township



## ROTHFUSZ WPA: COOPERATOR TBD



0 0.2 Miles

Scale: 1:5,000

Produced: 07/10/2025

-  WPA Boundary
-  Haying Area

**Haying period is August 1st through 21st.**  
**Bale and equipment removal date is September 15th.**

**Approximate hay acreage is: 56 acres**

**Hayed acreage will be measured by GPS.**

**FWS contact: Krista Lundgren, 701-647-2866 (office),  
701-830-0038 (cell)**

The USFWS makes no warranty for use of this map and cannot be held liable for actions or decisions based on map content.  
Produced by Kulm Wetland Management District.  
Datum: NAD 83  
Copyright © 1995-2023 Esri and its licensors.  
All rights reserved.  
Basemap: NAIP Aerial Imagery 2023