

# News Release



Department of the Interior  
U.S. Fish & Wildlife Service  
Baskett Slough National Wildlife Refuge  
10995 Hwy. 22  
Dallas, OR 97338  
Phone: 503-623-2749  
[https://www.fws.gov/refuge/baskett\\_slough/](https://www.fws.gov/refuge/baskett_slough/)

**Date :** July 18, 2025

**Contact:** Graham Evans-Peters, Refuge Manager

## Baskett Slough Refuge 2025 September Canada Goose Hunt

Baskett Slough National Wildlife Refuge will offer its 3rd annual September Canada goose hunt in 2025, consistent with the State Northwest Permit Zone Season, from September 6<sup>th</sup> through September 20<sup>th</sup>. The refuge is open to roam hunting on 1059 acres of seasonal wetlands, which may be dry during the hunt, and adjacent croplands (see map at our website for details). Hunters will be most successful by scouting geese, but also must recognize that farming and refuge field operations may disturb hunting areas.

Hunting is permitted in accordance with all applicable State (<https://www.dfw.state.or.us/resources/hunting/waterfowl>) and specific Refuge regulations ([https://www.fws.gov/refuge/baskett\\_slough/](https://www.fws.gov/refuge/baskett_slough/)). All vehicles are restricted to designated motorized routes of travel and parking areas (see map). All other species of wildlife other than Canada geese are protected. Only shotguns are permitted and all shot must be federally approved non-toxic shot. Dogs must be kept on leashes except during the lawful pursuit of game during legal seasons. No check in or check out is required. The refuge is open from dawn to dusk, although hunters may access the refuge 1 ½ hours before legal shooting time. Overnight camping and after hours parking are prohibited on the Refuge. Persons possessing, transporting, or carrying firearms on National Wildlife Refuges must comply with all provisions of State and local law. Persons may only use (discharge) firearms in accordance with Refuge regulations.

**For more information, regulations, and maps with open areas and parking locations, visit the Refuge website: [https://www.fws.gov/refuge/baskett\\_slough/](https://www.fws.gov/refuge/baskett_slough/)**

*The mission of the U.S. Fish and Wildlife Service is working with others to conserve, protect and enhance fish, wildlife, plants and their habitats for the continuing benefit of the American people. We are both a leader and trusted partner in fish and wildlife conservation, known for our scientific excellence, stewardship of lands and natural resources, dedicated professionals and commitment to public service. For more information on our work and the people who make it happen, visit [www.fws.gov](http://www.fws.gov) --FWS--*

# Baskett Slough National Wildlife Refuge

## Hunting Regulations – September Goose Waterfowl Hunt Opportunity



Hunting is permitted in accordance with all applicable State (see website below) and special Refuge regulations.

State of Oregon: [www.dfw.state.or.us/resources/hunting/waterfowl](http://www.dfw.state.or.us/resources/hunting/waterfowl)

Baskett Slough National Wildlife Refuge:  
[https://www.fws.gov/refuge/baskett\\_slough/](https://www.fws.gov/refuge/baskett_slough/)

- **Open to Hunting:** Canada geese at the established bag limits. 1059 acres of Baskett Slough are open to roam hunting including wetlands and adjacent croplands. See map for details.
- **Closed to Hunting:** All other species of wildlife not listed are protected.
- **Days Open to Waterfowl Hunting:** September 6 to September 20, 2025. See State regulations when published for 2025-26 season.
- **Vehicle Travel and Parking** - All vehicles are restricted to designated motorized routes of travel and parking areas (see map).
- **Boats** - Non-motorized watercraft (including boats, layout-type vessels, and float tubes) may only be used to set decoys and retrieve downed birds. Watercraft may not be used to access hunting locations.
- **Firearms, Ammunition, and Shell Limits** - Only shotguns are permitted and all shot must be federally approved non-toxic shot.
- **Dogs** - Dogs must be kept on leashes except during the lawful pursuit of game during legal seasons.

### *Prohibited Activities:*

- The use or possession of alcoholic beverages while hunting
- Fires
- Littering (including empty shotgun hulls)
- Overnight camping and parking
- Commercial guiding, trapping, or netting
- Use of ATVs and other off-road vehicles

### *Contact Information:*

Baskett Slough National Wildlife Refuge  
Graham Evans-Peters, Refuge Manager  
Phone: 541-760-2872

[E-mail: willamettevalley@fws.gov](mailto:willamettevalley@fws.gov)

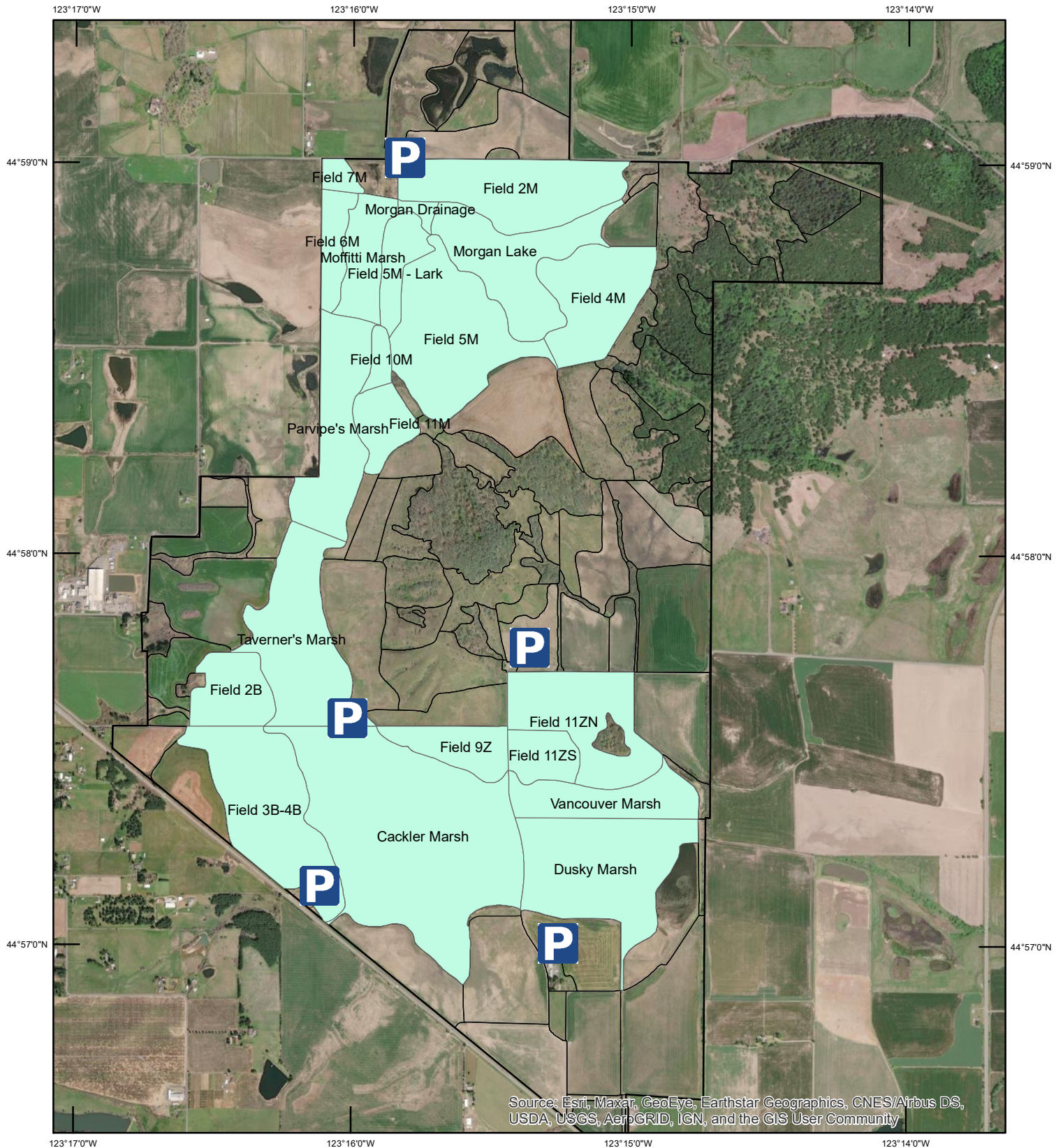


U.S. Fish & Wildlife Service

## Baskett Slough National Wildlife Refuge

Polk County, Oregon

*Proposed Sept. Goose Hunt Boundary*



Source: Esri, Maxar, GeoEye, Earthstar Geographics, CNES/Airbus DS, USDA, USGS, AeroGRID, IGN, and the GIS User Community

PRODUCED AT THE WILLIAM FINLEY WILDLIFE REFUGE  
CORVALLIS, OREGON  
MAP DATE: 11/16/2015  
BASEMAP:  
MERIDIAN: WILLAMETTE  
FILE: WNWNC\_8.5X11\_PORTRAIT.MXD

