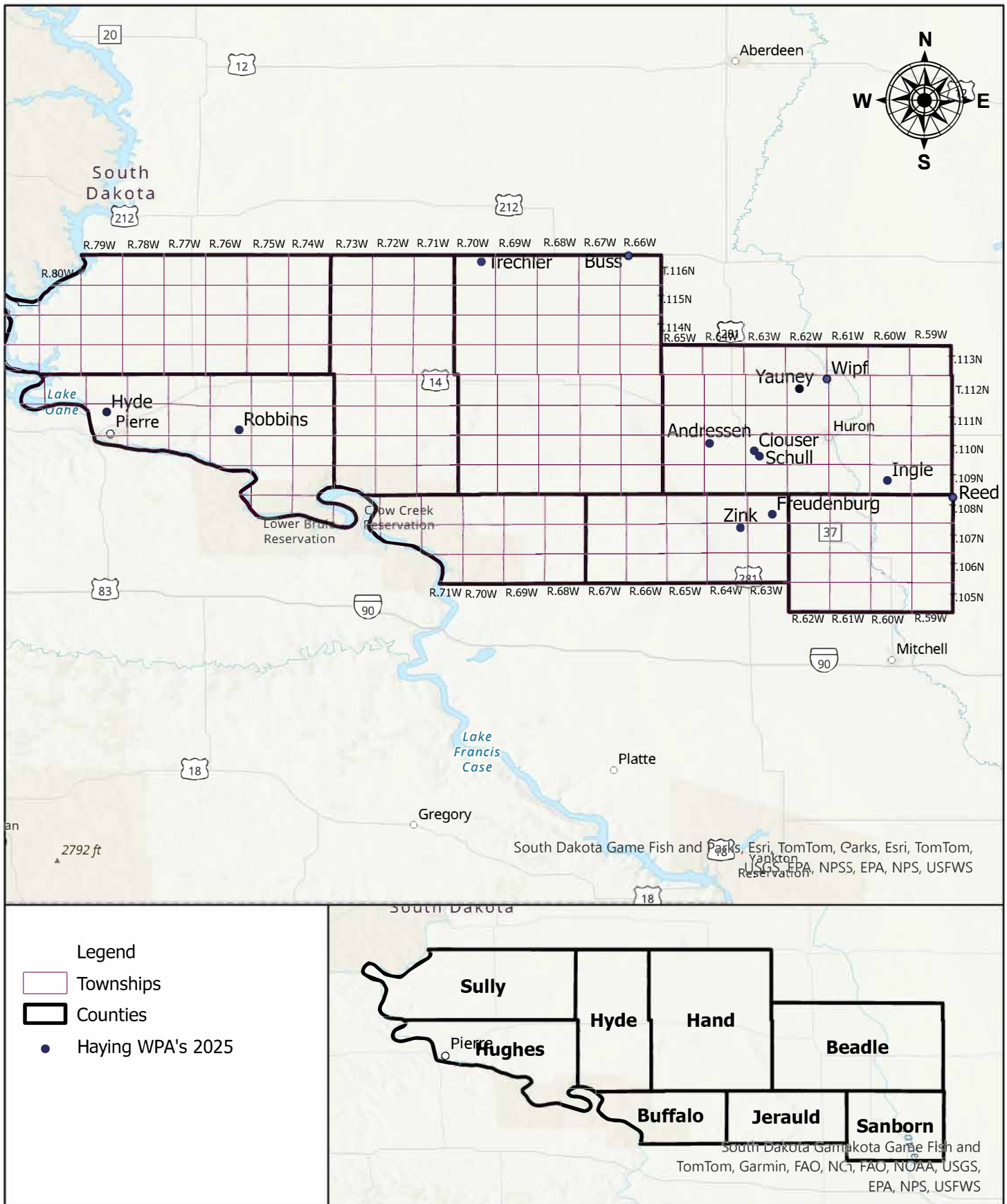


**U.S. Fish and Wildlife Service
Huron Wetland Management District
Waterfowl Production Areas
2025 Haying**





Andressen WPA

Legal Description **110-64-07**

County Beadle



Legend

Estimated Acres: 15

YearHayed

 2025

Hayed areas must be raked and all gates need to be closed after hay and equipment has been removed.





Buss WPA

Legal Description **116-66-05**

County Hand



Legend

Estimated Acres: 15

YearHayed

 2025

Hayed areas must be raked and all gates need to be closed after hay and equipment has been removed.

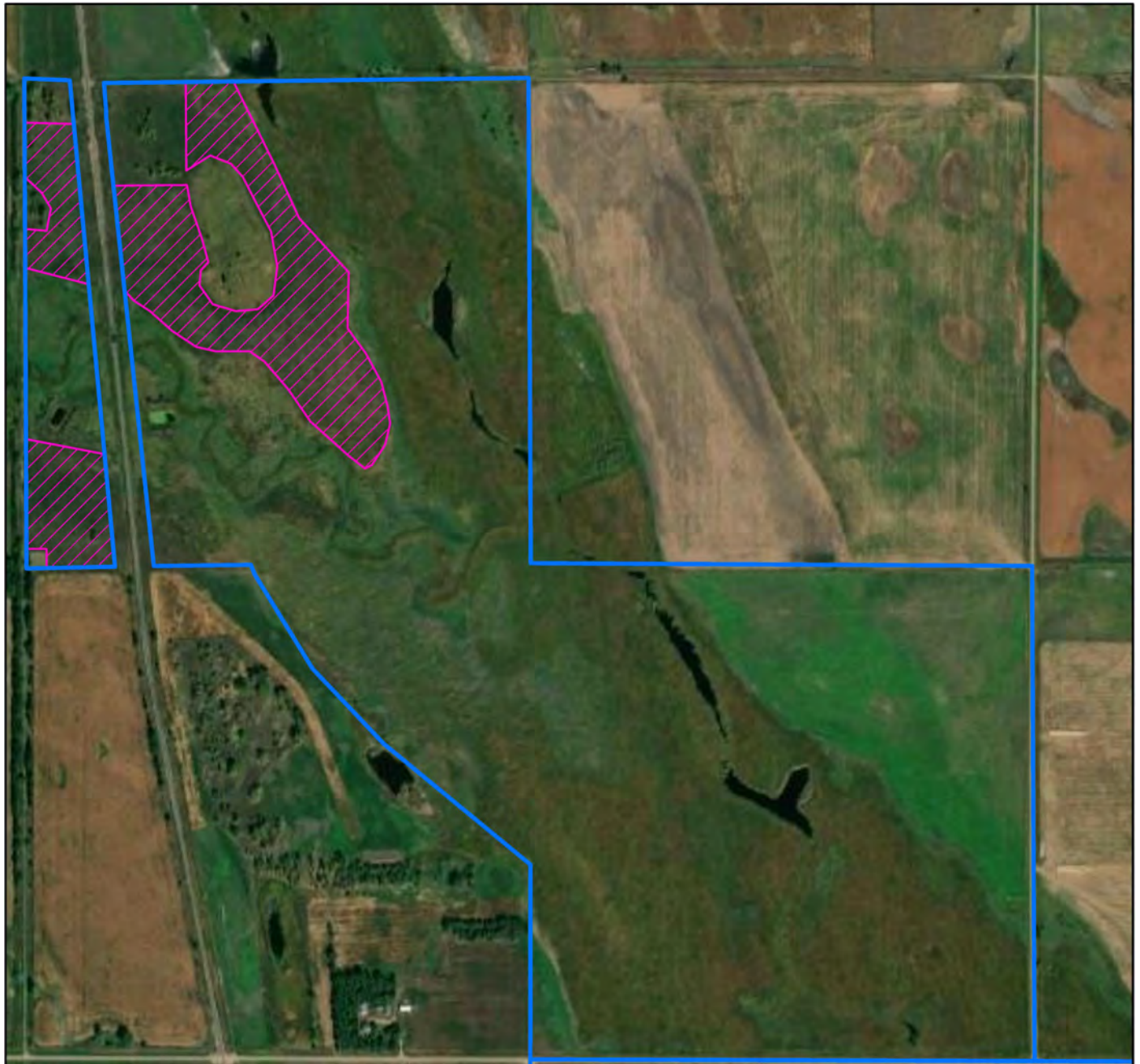




Clouser WPA

Legal Description **110-63-20**

County Beadle



Legend

Estimated Acres: 37

YearHayed

 2025

Hayed areas must be raked and all gates need to be closed after hay and equipment has been removed.





Freudenburg WPA

Legal Description 108-63-27
County Jerauld



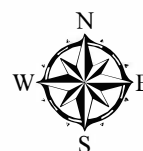
Legend

Estimated Acres: 47

Year Hayed

 2025

Hayed areas must be raked and all gates need to be closed after hay and equipment has been removed.





Hyde WPA

Legal Description 111-79-09

County Hughes



Legend

Estimated Acres: 57

YearHayed

 2025

Hayed areas must be raked and all gates need to be closed after hay and equipment has been removed.

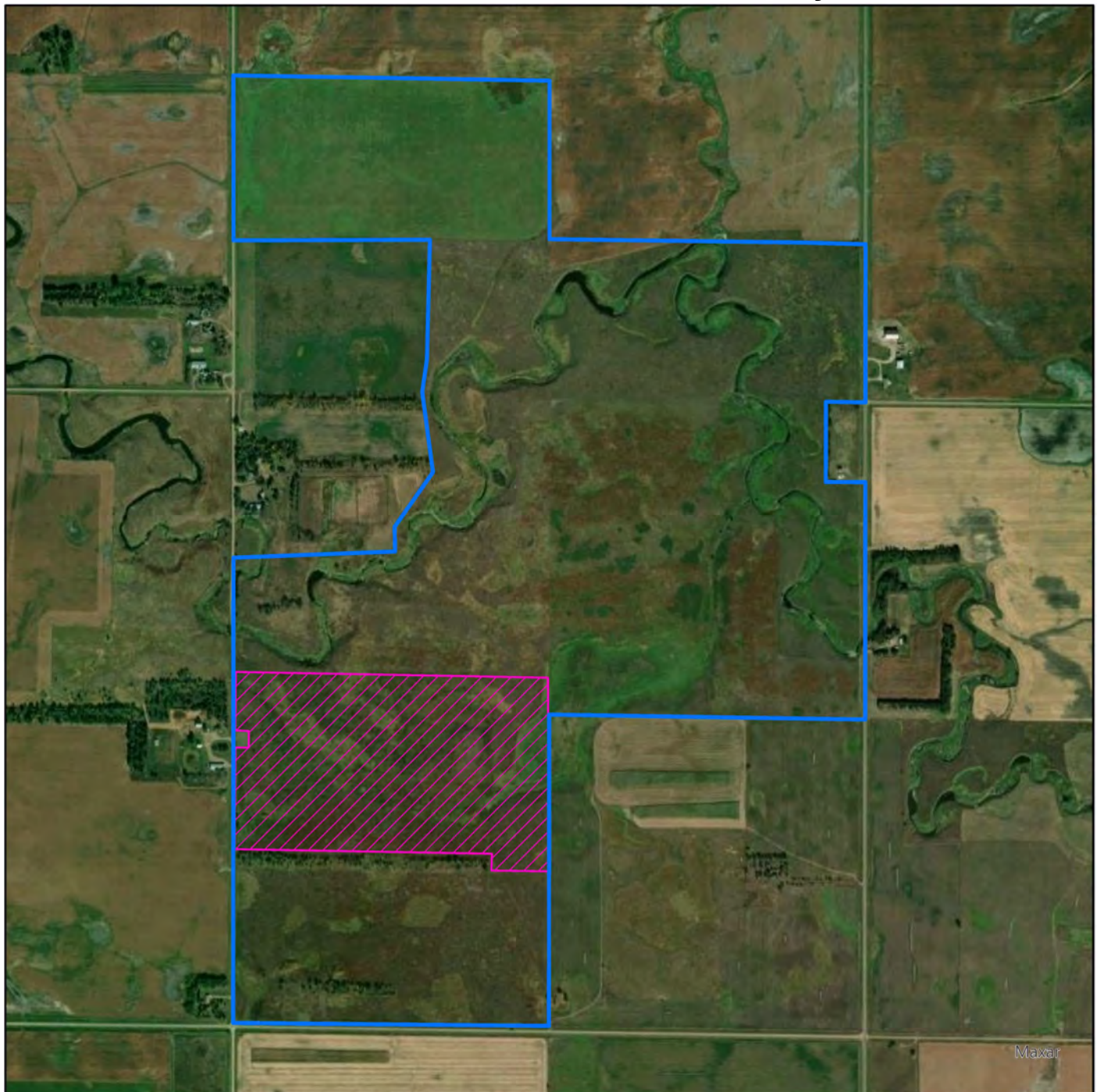




Ingle WPA

Legal Description 109-60-16&21

County Beadle



Legend

Estimated Acres: 90

Year Hayed

 2025

Hayed areas must be raked and all gates need to be closed after hay and equipment has been removed.





Reed WPA

Legal Description **108-59-01**

County Sanborn



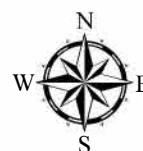
Legend

Estimated Acres: 16

YearHayed

 2025

Hayed areas must be raked and all gates need to be closed after hay and equipment has been removed.





Robbins WPA

Legal Description **111-76-26**

County Hughes



Legend

Estimated Acres: 56

YearHayed

 2025



Hayed areas must be raked and all gates need to be closed after hay and equipment has been removed.

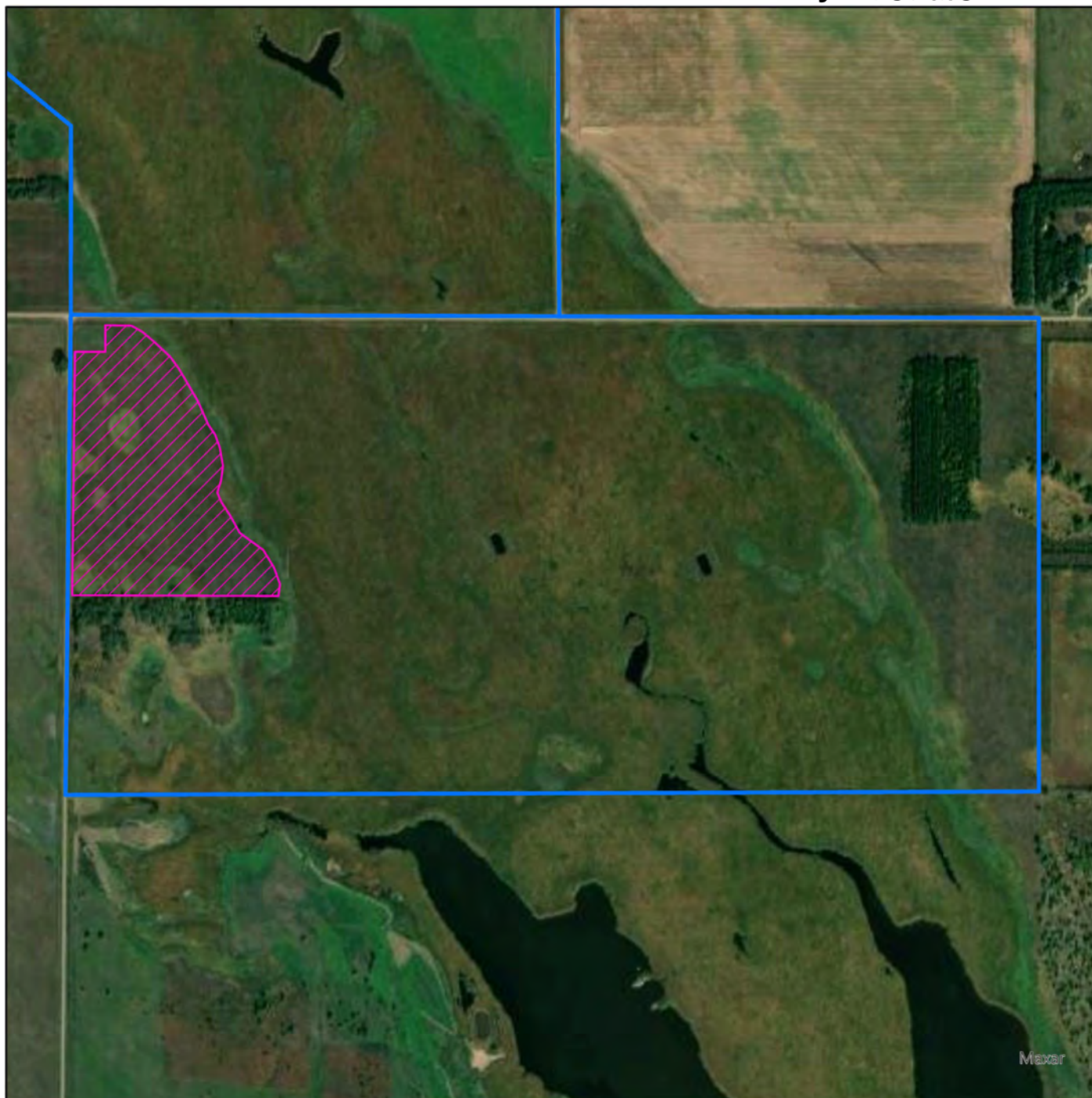


Huron Wetland Management District

Schull WPA

Legal Description 110-63-28&29

County Beadle



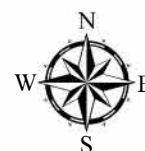
Legend

Estimated Acres: 27

Year Hayed

 2025

Hayed areas must be raked and all gates need to be closed after hay and equipment has been removed.

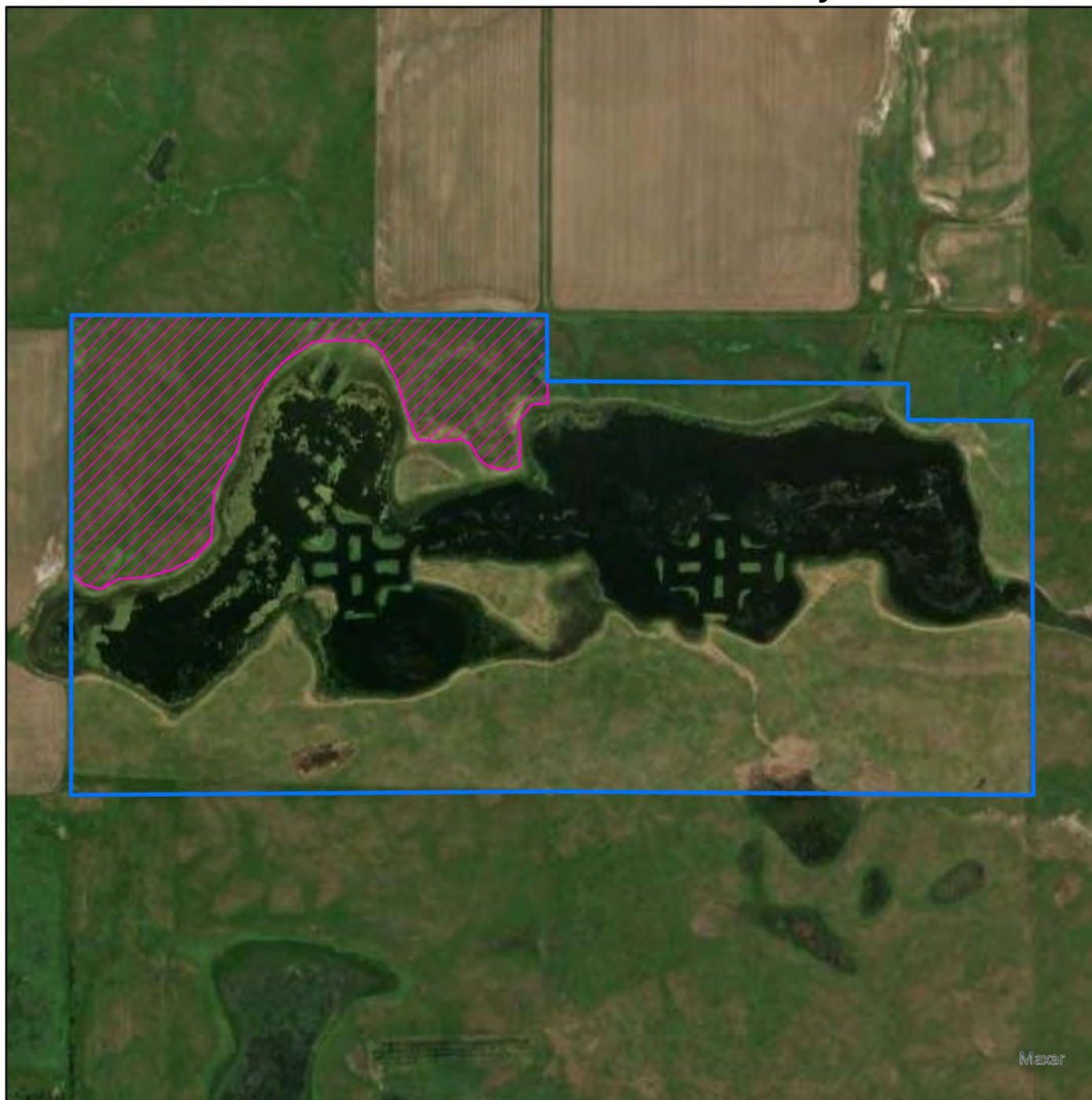




Trechler WPA

Legal Description 116-70-10&11

County Hand



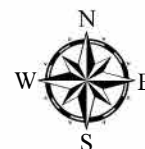
Legend

Estimated Acres: 45

Year Hayed

 2025

Hayed areas must be raked and all gates need to be closed after hay and equipment has been removed.





Wipf WPA

Legal Description **112-62-01**

County Beadle



Legend

Estimated Acres: 11

YearHayed

 2025

Hayed areas must be raked and all gates need to be closed after hay and equipment has been removed.

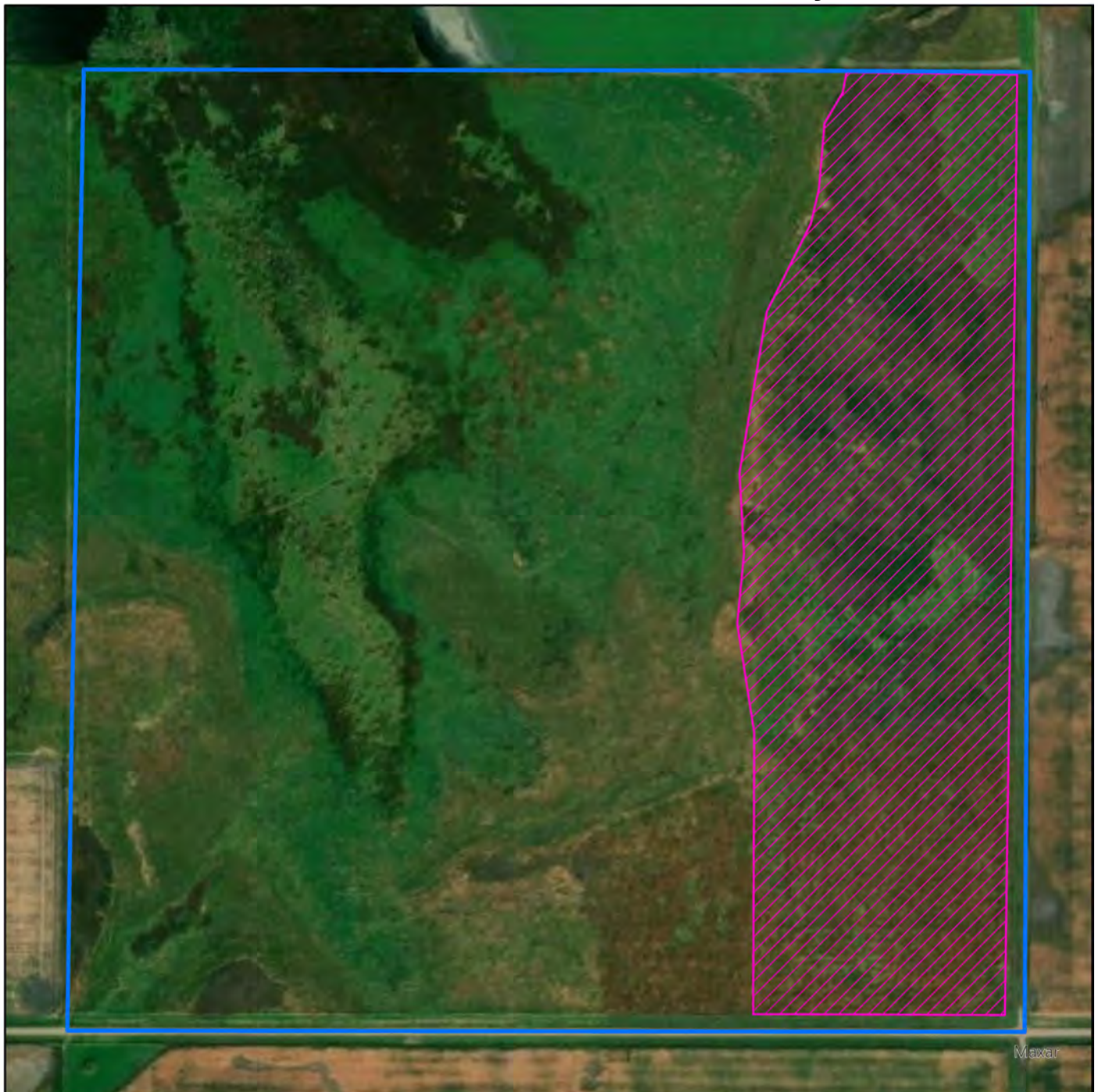




Yauney WPA

Legal Description 112-62-17

County Beadle



Legend

Estimated Acres: 41

YearHayed

 2025

Hayed areas must be raked and all gates need to be closed after hay and equipment has been removed.

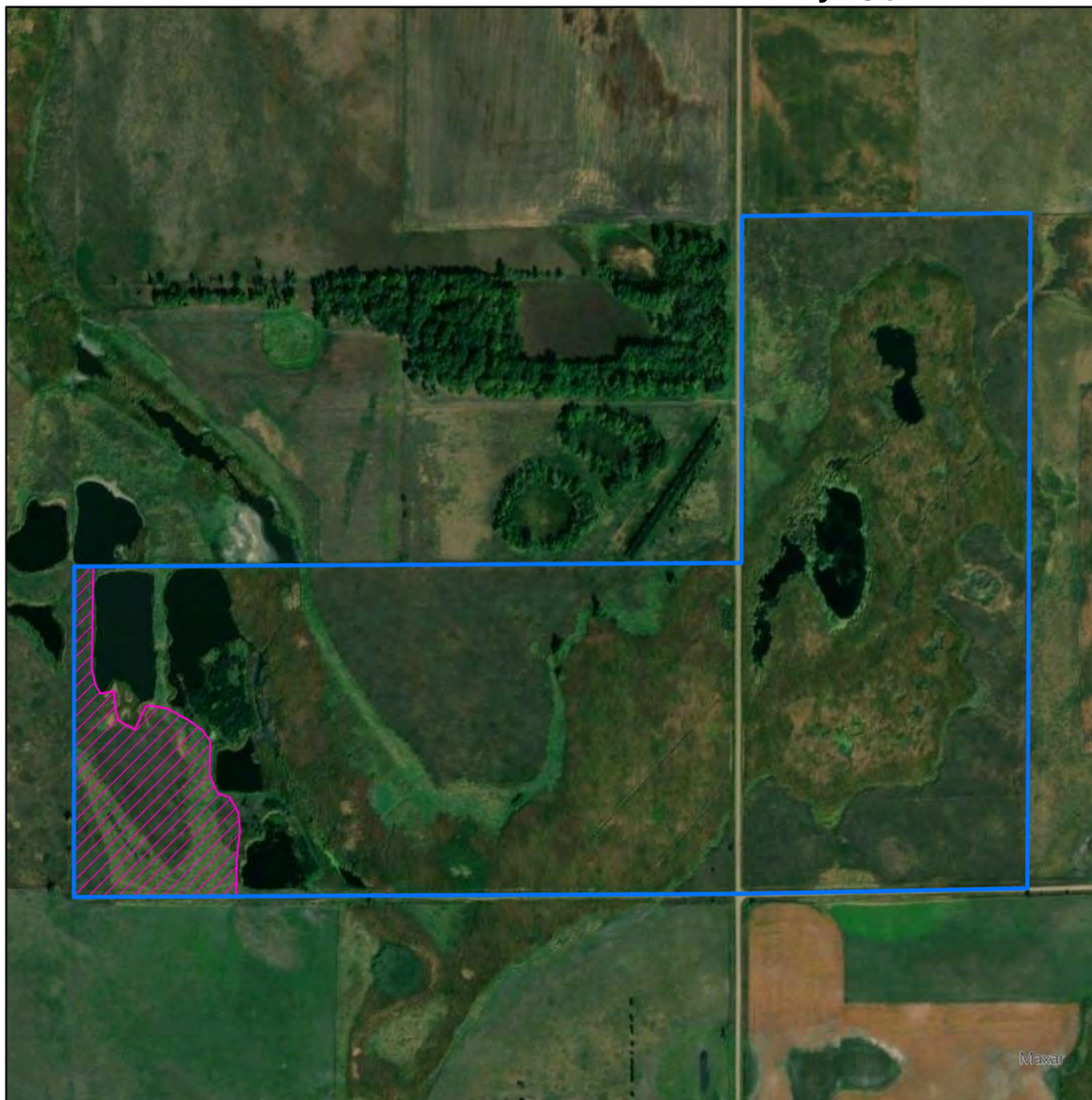




Zink WPA

Legal Description **107-64-02**

County Jerauld



Legend

Estimated Acres: 11

YearHayed

 2025

Hayed areas must be raked and all gates need to be closed after hay and equipment has been removed.

