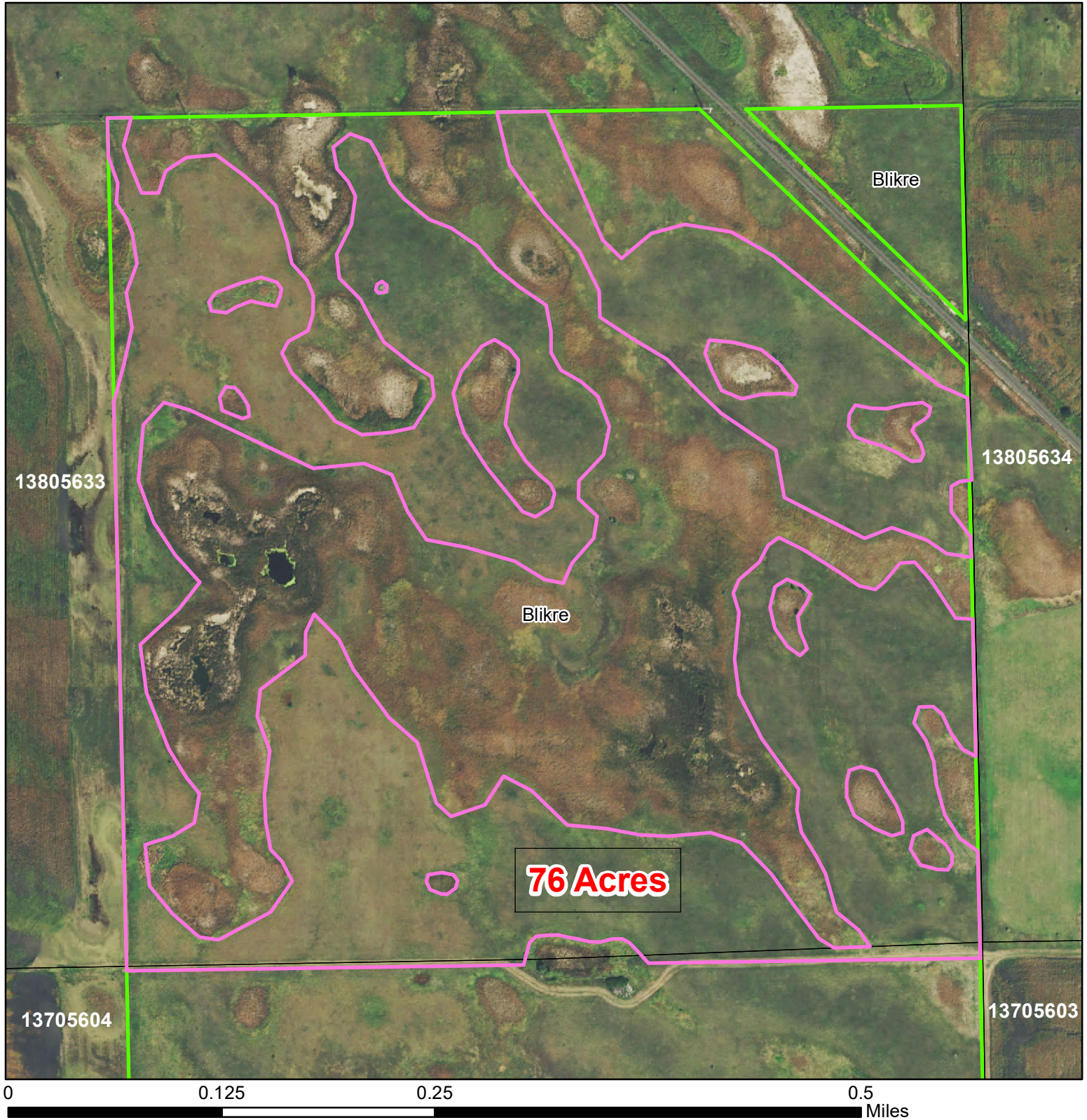




U.S. FISH AND WILDLIFE SERVICE

Haying Blikre WPA Barnes County



T138N. R56W. Sec 33

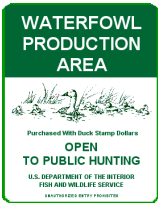
Legend

Hay_Unit

The USFWS makes no claim as to the accuracy or completeness of the displayed information. Outlined areas depicting USFWS lands are for illustrative purposes only and do not represent legal boundaries. The map scale bar is specific to the actual size of the displayed area and will vary within the county. For more detailed information, please contact your local Realty office.

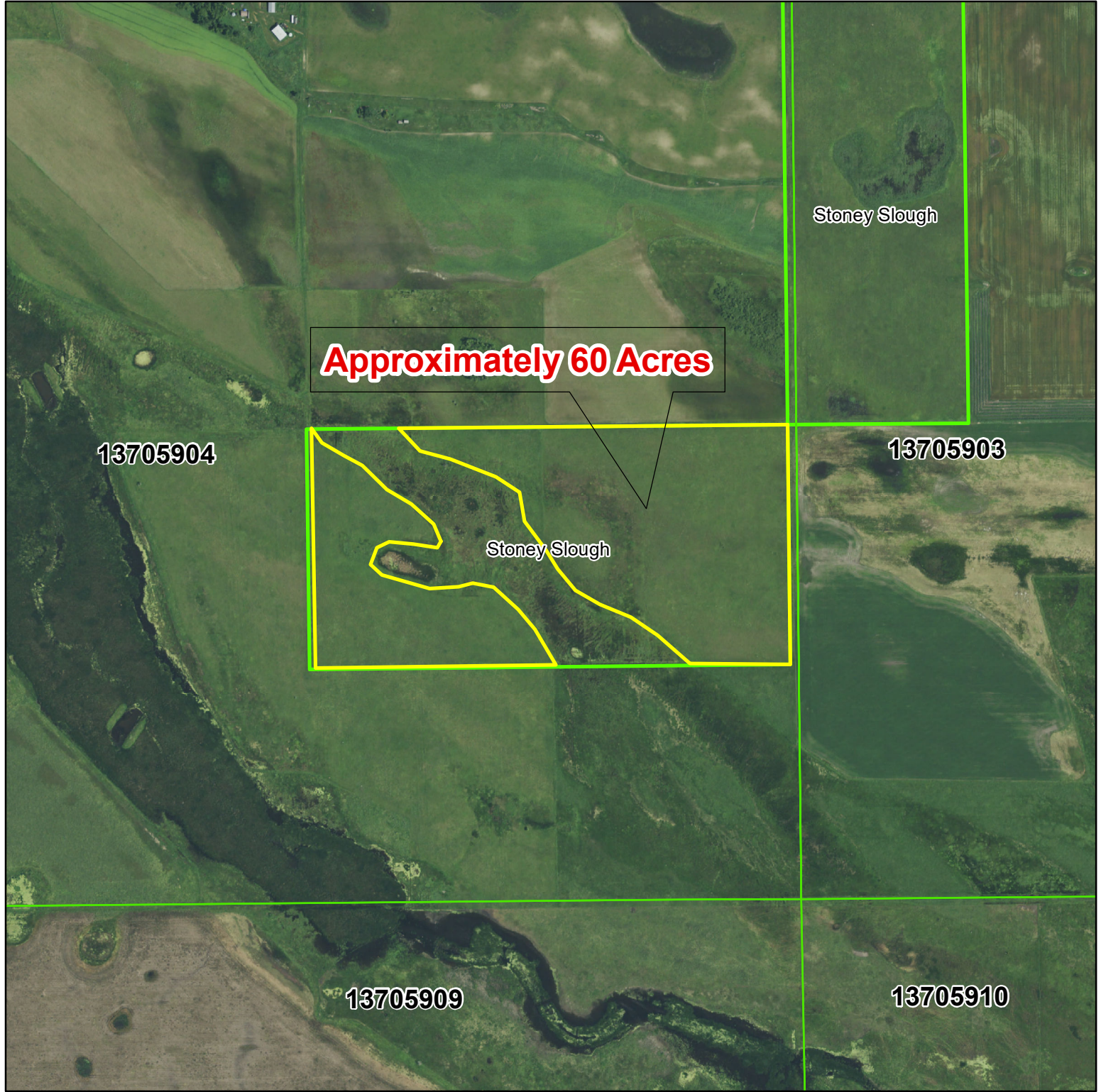


2021 SID



U.S. FISH AND WILDLIFE SERVICE

Hay Unit Stoney Slough WPA (Barnes County)



T137N. R59W. Sec 4

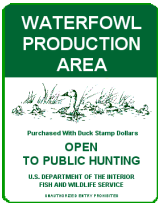
Legend

 Stoney Slough Hay Unit

The USFWS makes no claim as to the accuracy or completeness of the displayed information. Outlined areas depicting USFWS lands are for illustrative purposes only and do not represent legal boundaries. The map scale bar is specific to the actual size of the displayed area and will vary within the county. For more detailed information, please contact your local Realty office.



2020 SID



U.S. FISH AND WILDLIFE SERVICE

Haying Tolstad WPA Barnes County



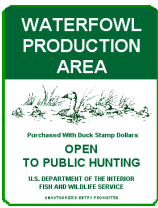
T142N. R60W. Sec 15

Legend

 Hay_Unit

The USFWS makes no claim as to the accuracy or completeness of the displayed information. Outlined areas depicting USFWS lands are for illustrative purposes only and do not represent legal boundaries. The map scale bar is specific to the actual size of the displayed area and will vary within the county. For more detailed information, please contact your local Realty office.





U.S. FISH AND WILDLIFE SERVICE

Utke WPA (Cass County)

Hay Units



T137. R55. Sec 12

Legend

Hay_Unit

The USFWS makes no claim as to the accuracy or completeness of the displayed information. Outlined areas depicting USFWS lands are for illustrative purposes only and do not represent legal boundaries. The map scale bar is specific to the actual size of the displayed area and will vary within the county. For more detailed information, please contact your local Realty office.



2019 SID