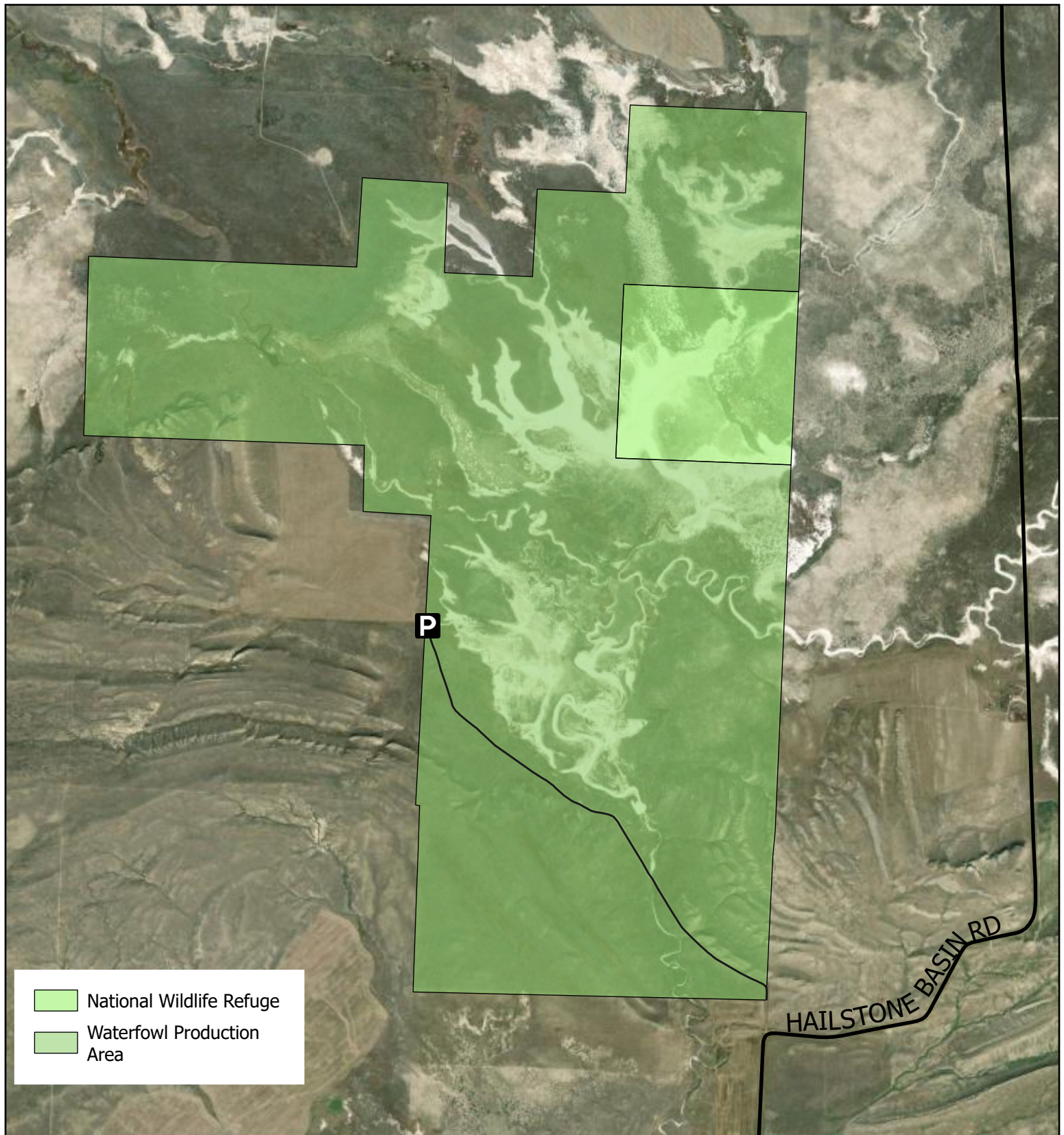


Hailstone WPA & NWR



Georeferenced satellite imagery map showing the location of Hailstone Waterfowl Production Area (1,828-ac) and National Wildlife Refuge (160-ac) located in Stillwater County, Montana. This WPA and NWR are a component of (WPA) and lie within the Charles M. Russell Wetland Management District.



0 0.35 0.7 1.4 2.1 2.8 Miles