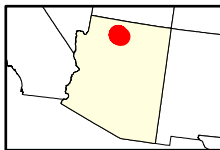
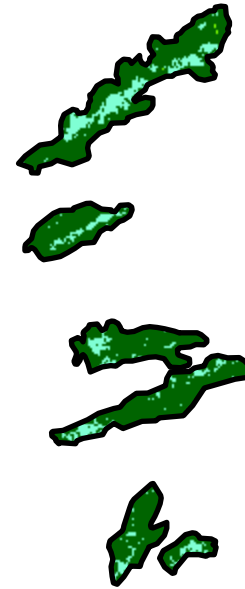
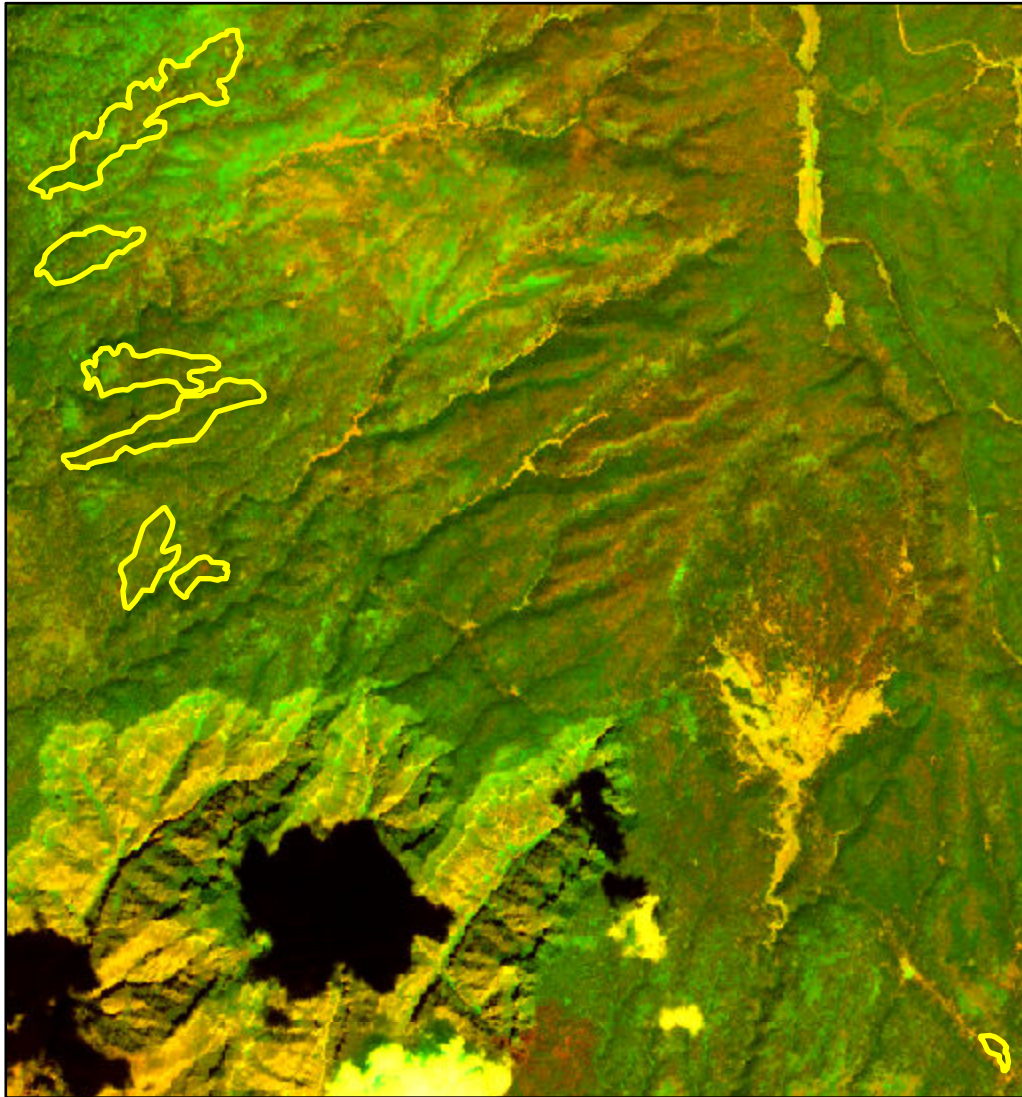


# 2021 Arizona: SLOPES 2021

az3629611220520211201



Latitude: 36° 16' 44.4"  
Longitude: -112° 08' 38.4"  
Fire Ignition Date: December 01, 2021  
Assessment Type: Extended  
Pre-Fire Image Date: September 09, 2021 (S2B)  
Post-Fire Image Date: September 04, 2022 (S2B)



This map portrays fire severity for the fire specified in the map title and summarizes proportions of fire severity classes. These data are produced under the National Burn Severity Mapping Project (NBSMP) jointly implemented by the USGS EROS and the NPS. The NBSMP ascertains the locations of fires based upon special requests from NPS staff members. The NBSMP reserves the right to correct, update or modify geospatial inputs to this map without notification.

\* Areas in either the pre-fire or post-fire reflectance imagery containing clouds, snow, shadows, smoke, significantly sized water bodies, missing lines of image data, etc.

0 2 4  
Miles

Acreage of Burn Severity	
Burn Severity	Acres
Unburned to Low	1,872
Low	345
Moderate	0
High	0
Increased Greenness	2
Non-Processing Area Mask*	0
<b>Total</b>	<b>2,219</b>