

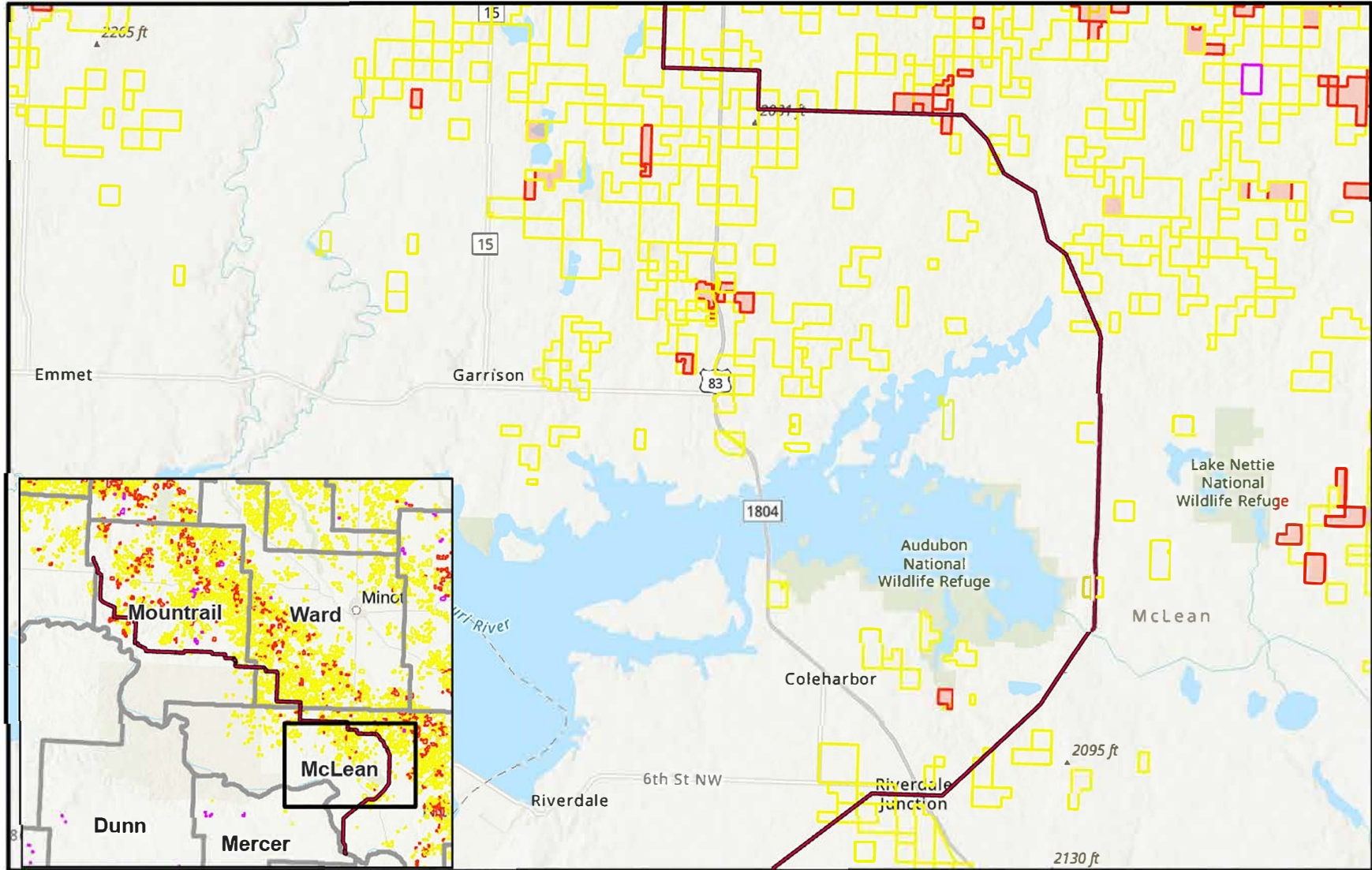






U.S. Fish & Wildlife Service

Basin Electric East Loop Route

Northwest North Dakota Complex
Central North Dakota Complex

Site Map #1



-  Basin Electric Proposed Route
-  Grassland Easements
-  Wetland Easements
-  FmHA Easements

PRODUCED at AUDUBON WMD
 COLEHARBOR, NORTH DAKOTA
 LAND STATUS CURRENT TO: 2/10/2025
 MAP DATE: 2/10/2025



State of North Dakota, Esri, TomTom, Garmin, FAO, NOAA, USGS, EPA, NPS, USFWS, Esri, NASA, NGA, USGS, State of North Dakota, Esri, TomTom, Garmin, SafeGraph, METI/NASA, USGS, EPA, NPS, USDA, USFWS, Esri, USGS

