
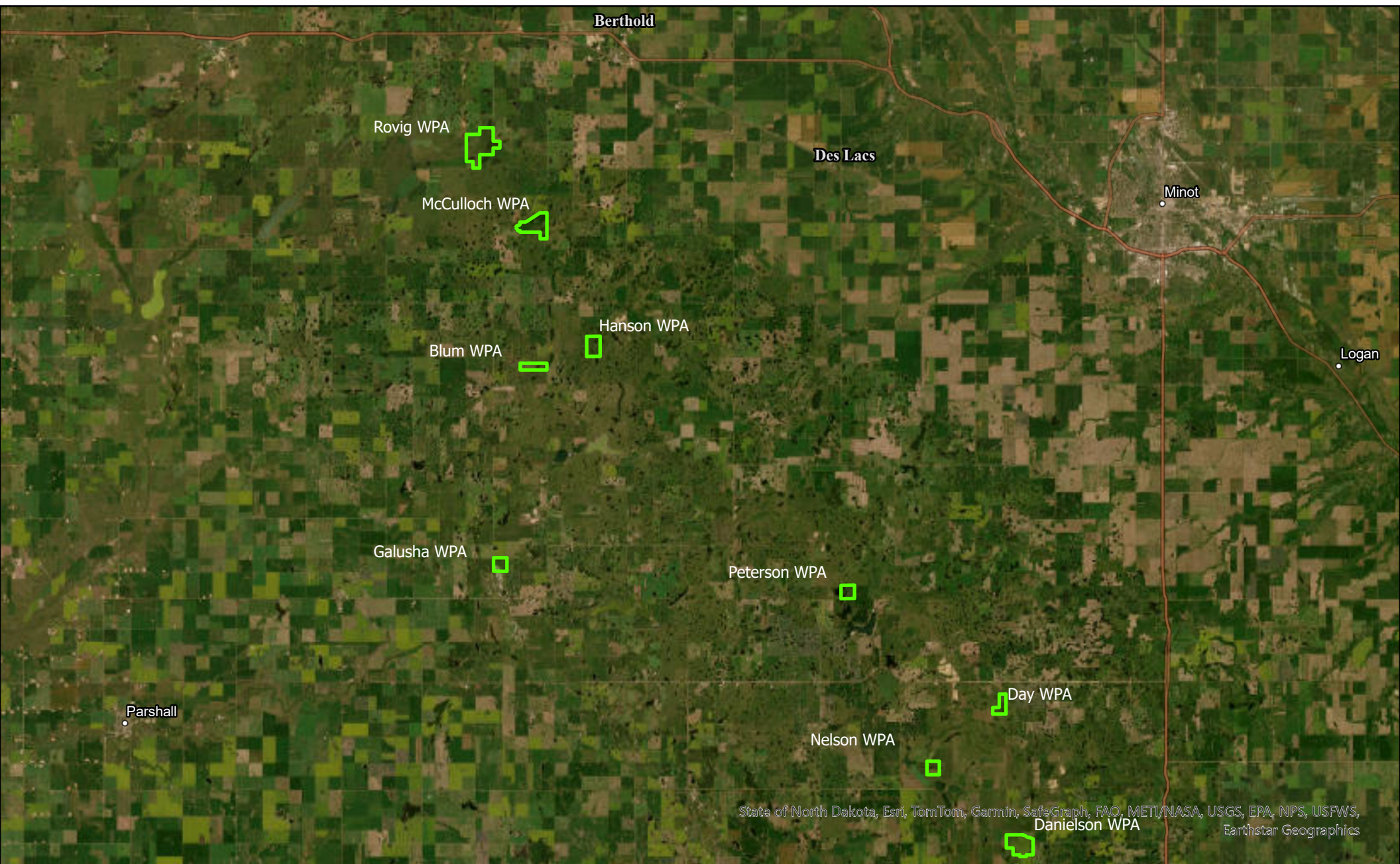


J. Clark Salyer Wetland Management District

Ward County WPA's open to new grazing permits

 WPAs open to grazing, 2025



State of North Dakota, Esri, TomTom, Garmin, SafeGraph, FAO, METI/NASA, USGS, EPA, NPS, USFWS, Earthstar Geographics

DISCLAIMER:

The USFWS makes no claim as to the accuracy or completeness of the displayed information. Green pins depicting the location of USFWS WPA fee lands are for illustrative purposes only and do not represent legal boundaries. For more detailed information, please contact one of the USFWS Realty Offices located in Bismarck and Minot, North Dakota, Aberdeen and Huron, South Dakota, or Great Falls, Montana.

Blum WPA



Approximate Acreage (including surface water):

Cell 1, 81 acres

Cell 2, 76 acres



Esri Community Maps Contributors, State of North Dakota, Esri, HERE,
Garmin, SafeGraph, GeoTechnologies, Inc, METI/NASA, USGS, EPA, NPS, US
Census Bureau, USDA, Maxar

0 0.4 0.8 1.6 Miles

 FWS Boundary

 Grazing Cells

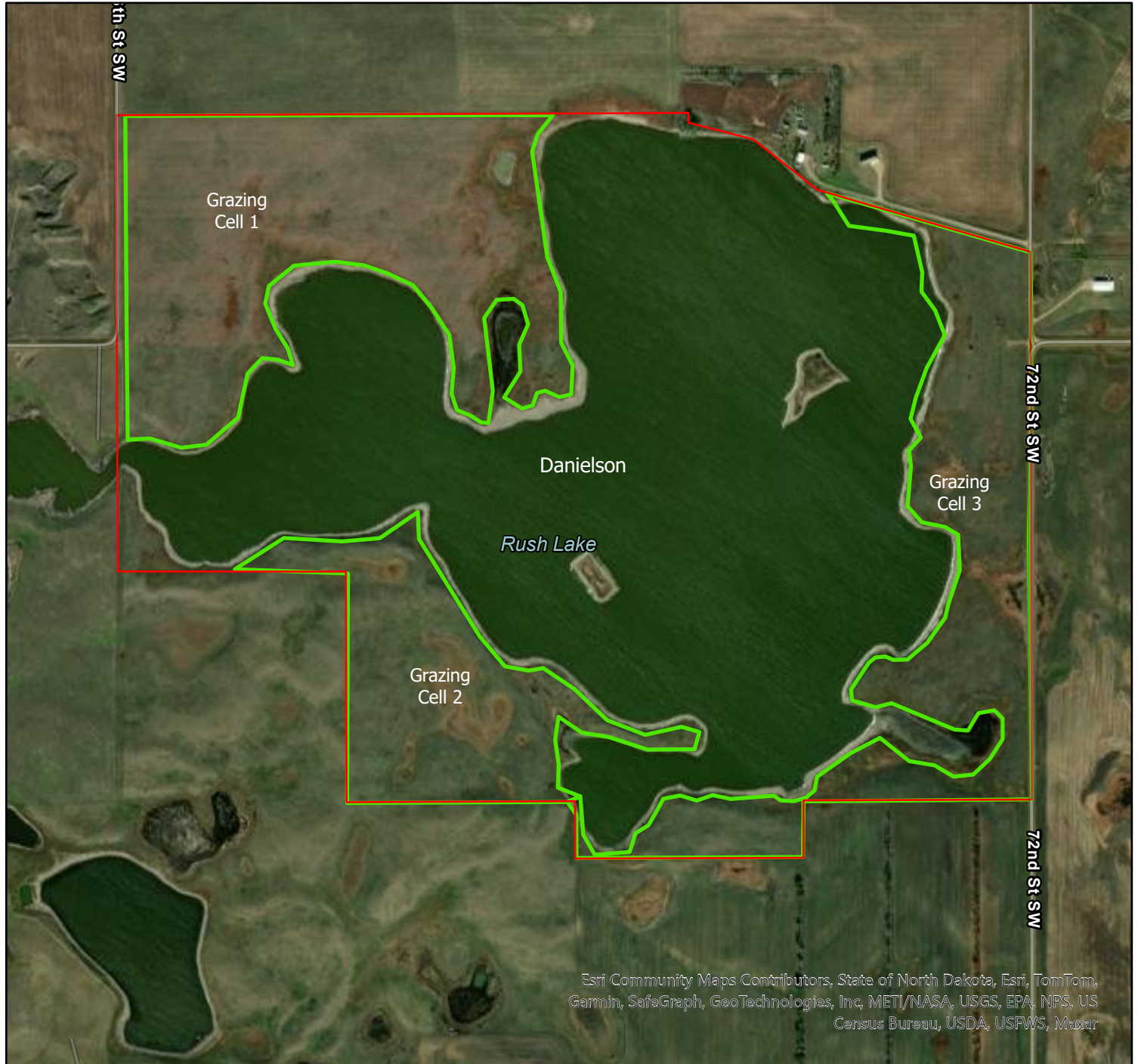
Danielson WPA



Approximate Acreage (including surface water):

Cell 1, 78 acres Cell 3, 57 acres

Cell 2, 37 acres



0 0.38 0.75 1.5 Miles

FWS Boundary

Grazing cells

****All boundary lines and measurements are intended for reference only and should not be used as an authoritative boundary or official measurement.**

Day WPA



Approximate Acreage (including surface water):

Cell 1, 82 acres

Cell 2, 73 acres



0 0.38 0.75 1.5 Miles

FWS Boundary

Grazing cells

****All boundary lines and measurements are intended for reference only and should not be used as an authoritative boundary or official measurement.**

Galusha WPA



Approximate Acreage (including surface water):

Cell 1, 77 acres

Cell 2, 82 acres



0 0.23 0.45 0.9 Miles

FWS Boundary

Grazing cells

****All boundary lines and measurements are intended for reference only and should not be used as an authoritative boundary or official measurement.**



Hanson WPA

Approximate Acreage (including surface water):
Cell 1, 239 acres



Esri Community Maps Contributors, State of North Dakota, Esri, HERE,
Garmin, SafeGraph, GeoTechnologies, Inc, METI/NASA, USGS, EPA, NPS, US
Census Bureau, USDA, Maxar

0 0.4 0.8 1.6 Miles

-  FWS Boundary
-  Grazing Cells

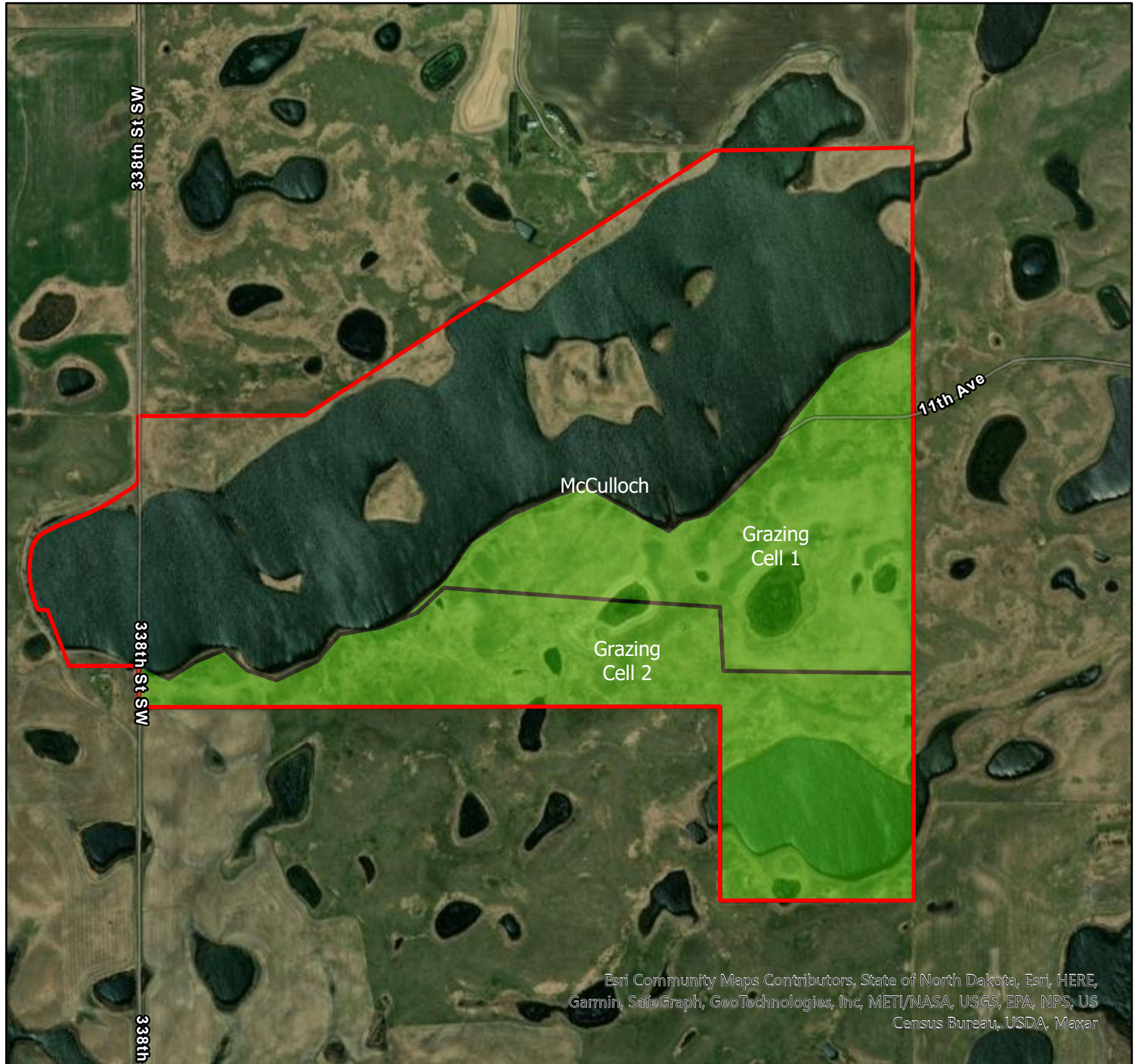
McCulloch WPA



Approximate Acreage (including surface water):

Cell 1, 80 acres

Cell 2, 98 acres



Esri Community Maps Contributors, State of North Dakota, Esri, HERE,
Garmin, SafeGraph, GeoTechnologies, Inc, METI/NASA, USGS, EPA, NPS, US
Census Bureau, USDA, Maxar

0 0.45 0.9 1.8 Miles

 FWS Boundary

 Grazing Cells

Nelson WPA



Approximate Acreage (including surface water):
Cell 1, 147 acres



0 0.23 0.45 0.9 Miles

- FWS Boundary
- Grazing cells

****All boundary lines and measurements are intended for reference only and should not be used as an authoritative boundary or official measurement.**

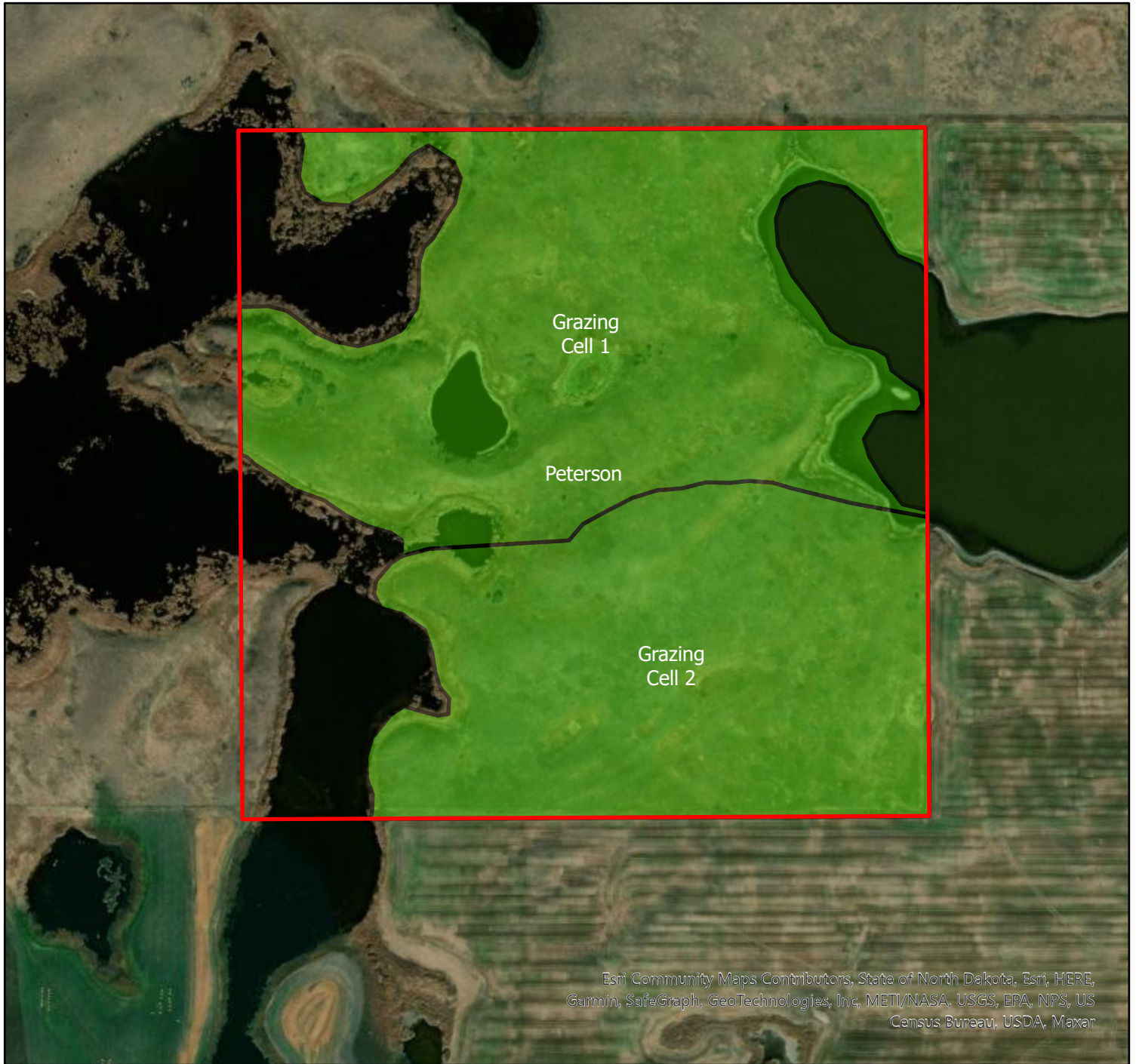
Peterson WPA



Approximate Acreage (including surface water):

Cell 1, 70 acres

Cell 2, 54 acres



Esri Community Maps Contributors, State of North Dakota, Esri, HERE,
Garmin, SafeGraph, GeoTechnologies, Inc, METI/NASA, USGS, EPA, NPS, US
Census Bureau, USDA, Maxar

0 0.25 0.5 1 Miles

 FWS Boundary

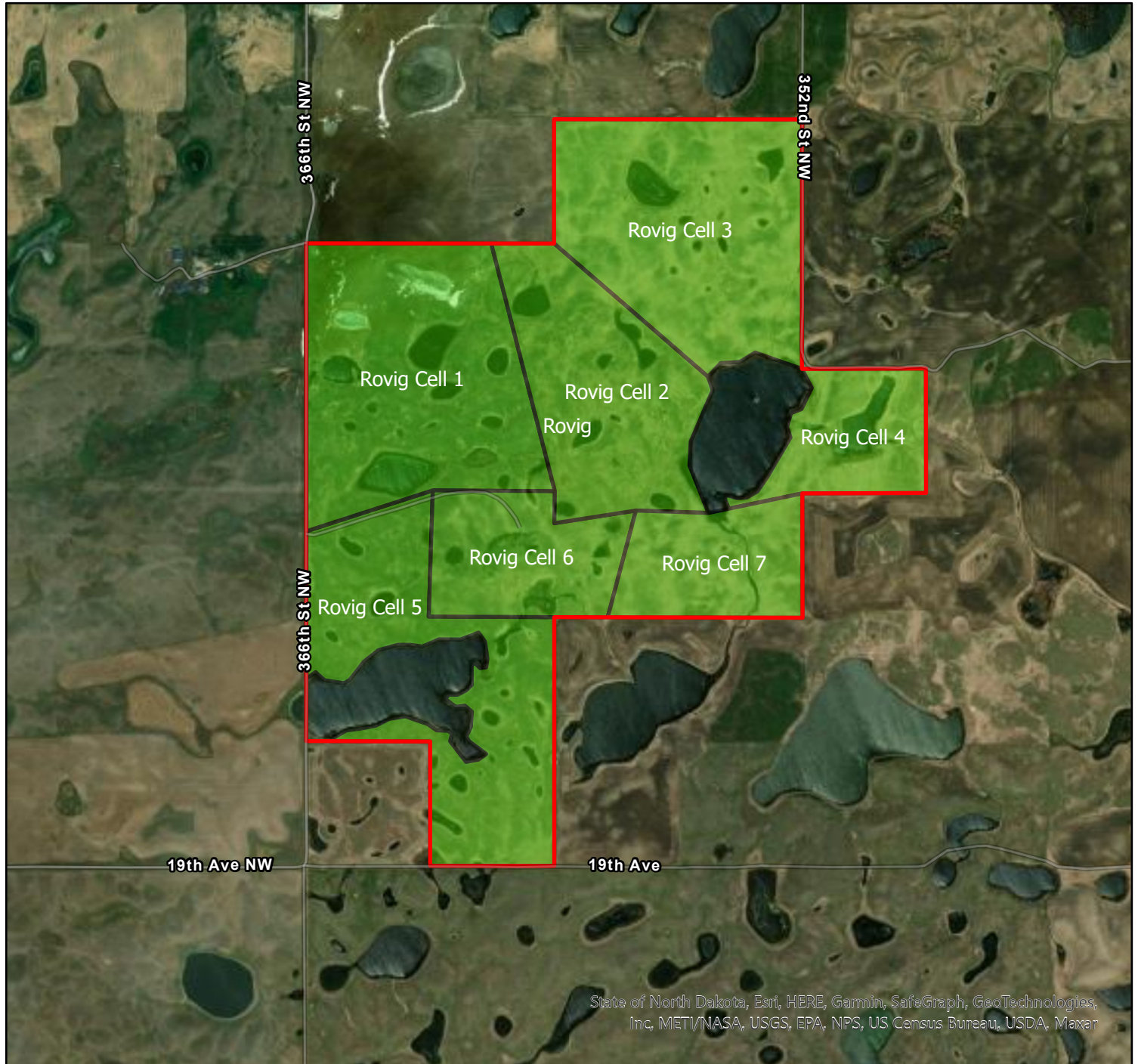
 Grazing Cells

Rovig WPA


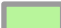


Approximate Acreage (including surface water):

Cell 1, 145 acres	Cell 3, 135 acres	Cell 5, 121 acres	Cell 7, 51 acres
Cell 2, 98 acres	Cell 4, 45 acres	Cell 6, 57 acres	



0 0.5 1 2 Miles

-  FWS Boundary
-  Grazing Cells