

Welcome

Camas National Wildlife Refuge was established on October 8th, 1937 “as a refuge and breeding ground for migratory birds and other wildlife.” The 10,806 acre Refuge lies within Jefferson County near the small community of Hamer. Much of the water needed to support the Refuge’s wetlands and wet meadows is supplied by Camas Creek. The Refuge provides vital habitat for a variety of migratory birds and other wildlife that inhabit or use the Snake River Plain in eastern Idaho. Today, the amount of wetlands you will see on the Refuge will vary in a given year due to changes in local agricultural practices and availability of water.

Safety

At any time, hunters may encounter elk. Elk can behave in an unpredictable manner, and hunters should use caution when in close proximity to these animals.

Hunters must wear a minimum of 36 square inches of blaze orange, and a blaze orange head covering while hunting on the Refuge.

Firearms

Persons possessing, transporting, or carrying firearms on National Wildlife Refuge System lands must comply with all provisions of State and local law. Persons may only use (discharge) firearms in accordance with refuge regulations (50 CFR 27.42 and specific refuge regulations in 50 CFR Part 32.)

The elk hunt follows the state regulations for Unit 63 and allows any legal weapon to hunt elk in the State of Idaho. Hunters are asked to be aware of their target and beyond because of private homes and farms that are near the Refuge boundary, Interstate 15 that forms the east boundary, Refuge employees, and Refuge visitors that could be present in certain areas.

Vehicles

Hunters can only use vehicles including ATV/UTVs, on roads or parking areas that are designated for that use.

Accessibility Information

Equal opportunity to participate in and benefit from programs and activities of the U.S. Fish and Wildlife Service is available to all individuals regardless of physical or mental ability. For more information please contact the U.S. Department of the Interior, Office of Equal Opportunity, <https://www.doi.gov/pmb/eoo/public-civil-rights>.

Hunt Type	Season Dates	Harvest	Hunt Areas	Other Regulations
Elk	Sept 1 - Dec 31	1 antlerless elk	North, Central, South Units	Access to hunt elk on Refuge is granted only for a 15-day period (8 hunting periods) determined by a draw conducted by IDFG
Waterfowl (ducks, geese, coots, mergansers, snipe)	State of Idaho regulations apply	State of Idaho regulations apply	North, South Units	Hunters may access Refuge 1 hour before legal shooting time
Dove	State of Idaho regulations apply	State of Idaho regulations apply	North, South Units	Hunter may access Refuge 1/2 hour before legal shooting time
Pheasant	State of Idaho regulations apply	State of Idaho regulations apply	North, South Units	Hunter may access Refuge 1/2 hour before legal shooting time
Gray Partridge	State of Idaho regulations apply	State of Idaho regulations apply	North, South Units	Hunter may access Refuge 1/2 hour before legal shooting time
Sage Grouse	State of Idaho regulations apply	State of Idaho regulations apply	North, South Units	Hunter may access Refuge 1/2 hour before legal shooting time
Footer Note: State regulations apply for all bag limits, non toxic ammunition required for hunting all bird species, minimum of 36 square inches of blaze orange and blaze orange head covering required except waterfowl hunting				
Eurasian collared-doves may only be hunted during the State seasons for migratory and upland game birds				

Disabled hunters may obtain a Special Use Permit (SUP) prior to hunting for hunting access and/or retrieval of game.

Hunting Regulations

Hunting regulations are designed to provide safe recreational opportunities through wise use of renewable wildlife resources. Hunting are permitted in accordance with Federal regulations governing public use on National Wildlife Refuges as set forth in Title 50 of the Code of Federal Regulations.

Hunting will be in accordance with applicable State of Idaho regulations subject to the conditions stated below. Brochures may be obtained by mail, at the refuge headquarters, or from the refuge website.

Elk hunters must carry a valid Idaho Department of Fish and Game (IDFG) hunting license and elk permit for the management Unit 63 antlerless only elk hunt along with this signed permit.

Access

Hunters may only access the Refuge one-half hour before legal shooting hours until one-half hour after legal sunset, unless extra time is needed for removing harvested game.The area open to elk hunting on the Refuge includes two areas currently open to bird hunting, plus most of the Refuge, excluding our main public use area. See map on reverse.

Park only in designated parking areas and do not block any roads or gates from the general public or Refuge staff. Please keep in mind that the auto-tour route is not in the area that is open to hunting and should not be used for access parking.

If a hunter must retrieve a dead elk from an area on the Refuge that is closed to hunting, report the retrieval (208) 662-5423 as soon as possible.

Harvested game must be packed out on foot. Use of horses or other pack animals for hunting or game removal is prohibited.

Each permitted hunter may be accompanied by up to two unarmed companions. Companions must comply with the blaze orange requirement.

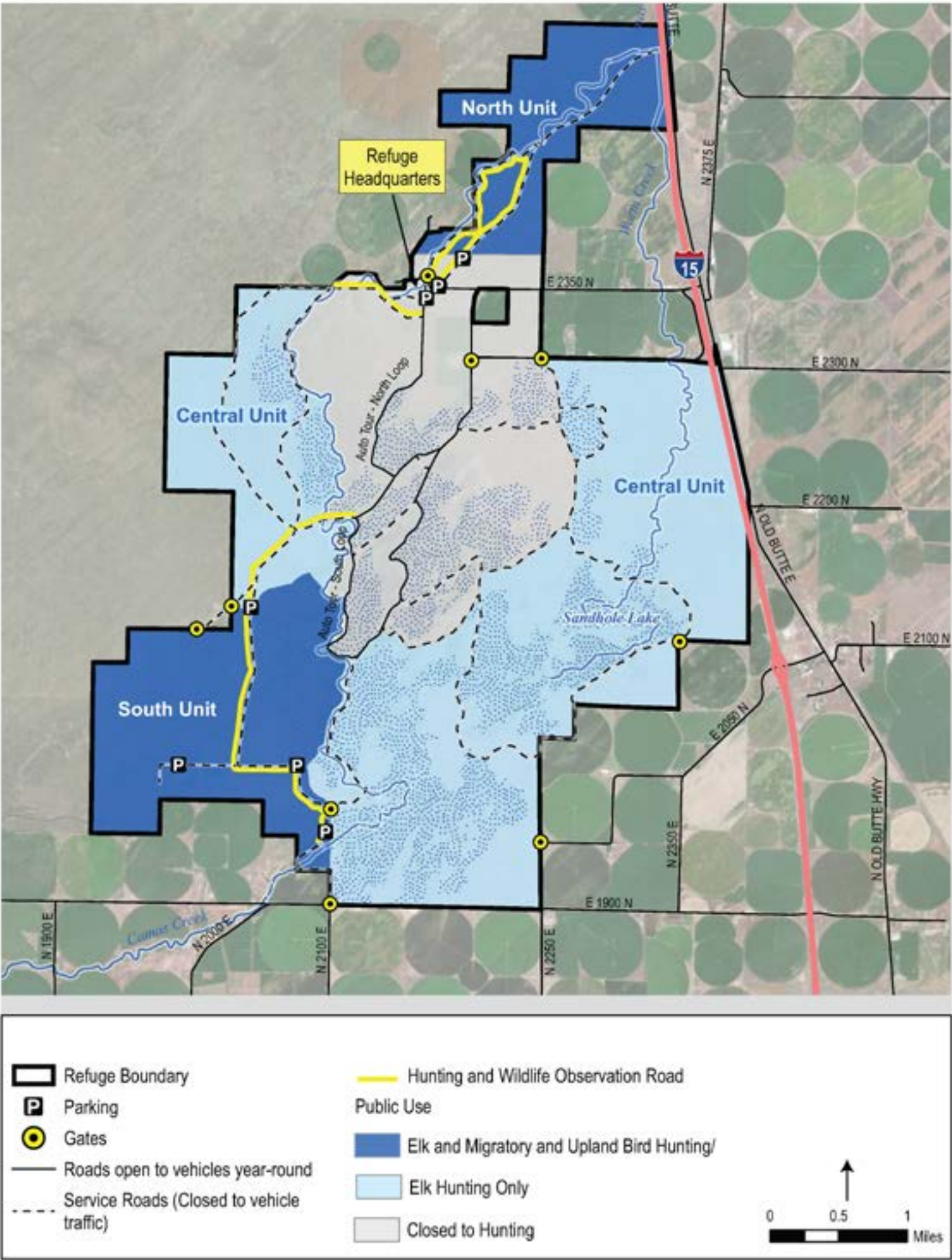
Camas National Wildlife Refuge
2150 E 2350 N
Hamer, ID 83425

(208) 662-5423
www.fws.gov/refuge/camas

U.S. Fish & Wildlife Service
1-800-344-WILD

October 2025





Special Considerations

Hunters must maintain a distance of at least 400 meters (1/4 mile) of roosting Sandhill cranes. The Refuge may also selectively close areas, as detected, to protect sensitive wildlife resources within the hunt area with spatial buffers. As closures are implemented, the Refuge will supply hunt permit holders with maps of closures to hunting activity.

Waterfowl hunters may only use portable blinds or construct temporary blinds of natural vegetation. They must remove portable blinds, decoys, and other personal property at the end of each day’s hunt.

Prohibited Activities

- Camping is prohibited on Refuge.
- Open fires are prohibited on Refuge
- Removal of any historical artifacts or natural objects found on the Refuge, including shed antlers, is strictly prohibited.
- Boats, canoes, kayaks, etc. are prohibited.
- Use of horses or other pack animals.

- Fishing is prohibited.
- Retrieval of game shot off Refuge
- Hunting is prohibited within 200 yards of any public use facility
- Possession of alcoholic beverages while hunting
- Motorized equipment: All-terrain vehicles, dirt bikes, ebikes, and chain saws. Use of electronic or photographic trail monitoring devices
- Takeoff and Landing of Uncrewed Aircraft Systems/Drone
- Ammunition that may not be legally used for taking waterfowl, only federally approved non-toxic shot may be used or possessed. Lead ammunition is permitted for the elk hunt only.

Signs and Boundaries

Safety Zones: You may not shoot or discharge any hunting firearm from, across, or along a public highway, designated route of travel, road, road shoulder, road embankment, or designated parking area.

Applies to the area located behind the sign

- Refuge Boundary: Entry permitted in accordance with refuge regulations
- No Hunting Zone: Hunting, weapons, and game retrieval prohibited