




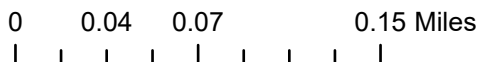


Source: Esri, USDA FSA, Esri Community Maps Contributors, State of North Dakota, © OpenStreetMap, Microsoft, Esri, TomTom, Garmin, SafeGraph, GeoTechnologies, Inc, METI/NASA, USGS, EPA, NPS, US Census Bureau, USDA, USFWS

-  Perm. Barbed Wire
-  Temp. Electric
-  WPA Boundary

Produced by Audubon Wetland Management District  
 Produced: 2/2/2024  
 Basemap: NAIP Imagery

The USFWS makes no warranty for use of this map and cannot be held liable for actions or decisions based on map content. This map is to be used to determine grazing on WPAs in conjunction with a Special Use Permit. Map image is the intellectual property of Esri and is used herein under license. Copyright © 2019 Esri and its licensors. All rights reserved.



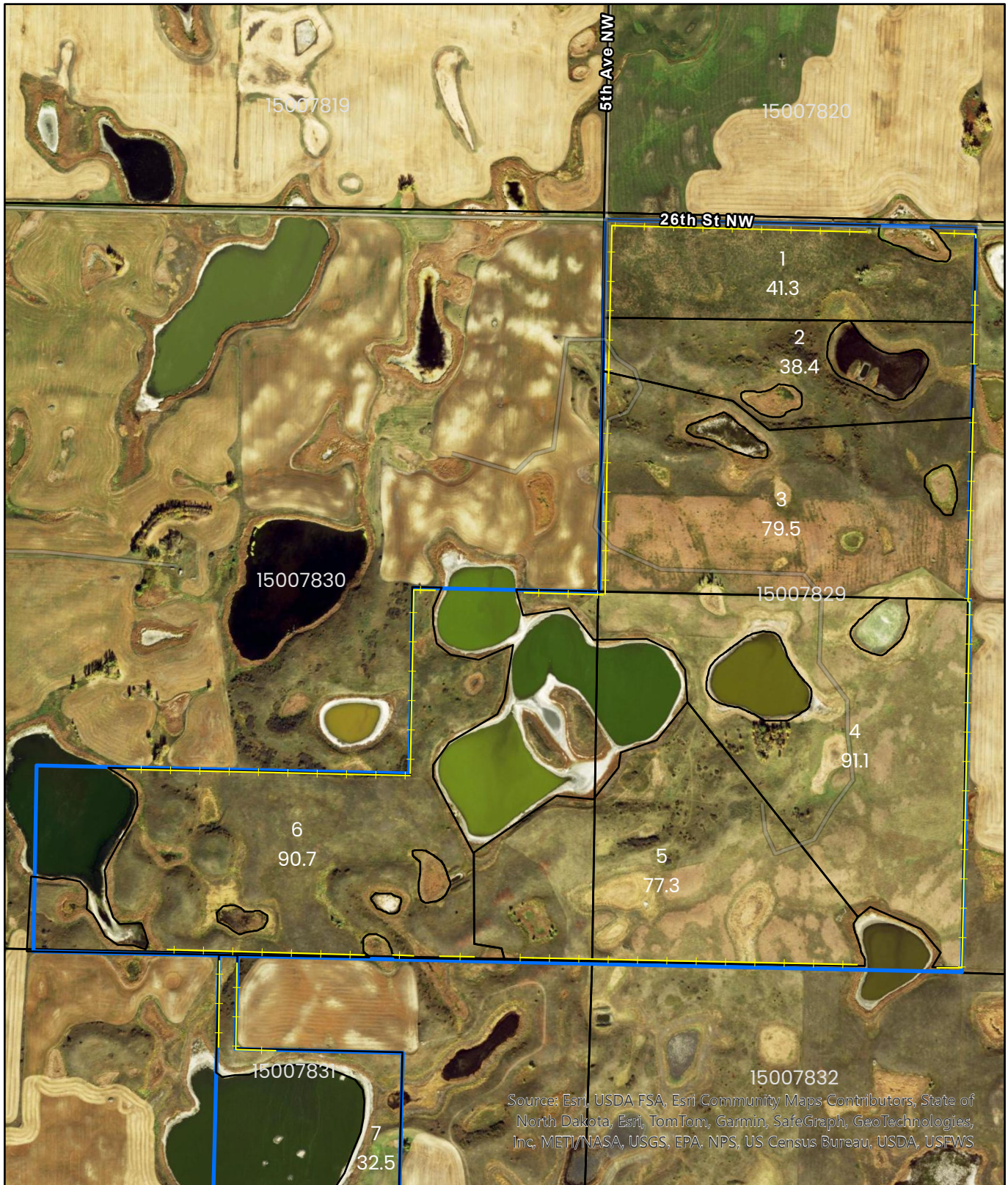
Datum: NAD 83

2024 Aurena WPAs Grazing Rotation			
30 Pairs, 1 Bull			
Cell	Days	Date In	Date Out
1	14	15-May	29-May
2	16	29-May	14-Jun
Total Days		30	

2024 Aurena WPAs Grazing Rotation			
30 Pairs, 1 Bull			
Cell	Days	Date In	Date Out
2	16	15-May	31-May
1	14	31-May	14-Jun
Total Days		30	

2024 Aurena WPAs Grazing Rotation			
30 Pairs, 1 Bull			
Cell	Days	Date In	Date Out
1	14	1-Jun	15-Jun
2	16	15-Jun	1-Jul
Total Days		30	



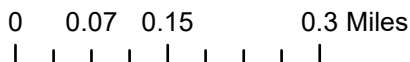


Source: Esri, USDA FSA, Esri Community Maps Contributors, State of North Dakota, Esri, TomTom, Garmin, SafeGraph, GeoTechnologies, Inc, METI/NASA, USGS, EPA, NPS, US Census Bureau, USDA, USEWS

- Perm. Barbed Wire
- Temp. Electric
- WPA Boundary




Produced by Audubon Wetland Management District  
 Produced: 2/2/2024  
 Basemap: NAIP Imagery

The USFWS makes no warranty for use of this map and cannot be held liable for actions or decisions based on map content.  
 This map is to be used to determine grazing on WPAs in conjunction with a Special Use Permit.  
 Map image is the intellectual property of Esri and is used herein under license.  
 Copyright © 2019 Esri and its licensors. All rights reserved.



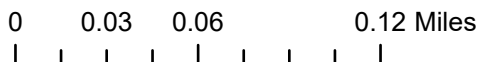




-  Perm. Barbed Wire
-  Temp. Electric
-  WPA Boundary

Produced by Audubon Wetland Management District  
 Produced: 2/2/2024  
 Basemap: NAIP Imagery

The USFWS makes no warranty for use of this map and cannot be held liable for actions or decisions based on map content. This map is to be used to determine grazing on WPAs in conjunction with a Special Use Permit. Map image is the intellectual property of Esri and is used herein under license. Copyright © 2019 Esri and its licensors. All rights reserved.



Datum: NAD 83



<b>2024 Blomeke/Dossenke/Williams WPAs Grazing Rotation</b>			
60 Pairs, 2 Bull			
<b>Cell</b>	<b>Days</b>	<b>Date In</b>	<b>Date Out</b>
7	10	15-May	25-May
6	18	25-May	12-Jun
5	15	12-Jun	27-Jun
4	18	27-Jun	15-Jul
<b>Total Days</b>		<b>61</b>	

<b>2025 Blomeke/Dossenke/Williams WPAs Grazing Rotation</b>			
60 Pairs, 2 Bull			
<b>Cell</b>	<b>Days</b>	<b>Date In</b>	<b>Date Out</b>
1/2	16	15-May	31-May
3	16	31-May	16-Jun
6	18	16-Jun	4-Jul
7	7	4-Jul	11-Jul
<b>Total Days</b>		<b>57</b>	

<b>2026 Blomeke/Dossenke/Williams WPAs Grazing Rotation</b>			
60 Pairs, 2 Bull			
<b>Cell</b>	<b>Days</b>	<b>Date In</b>	<b>Date Out</b>
4	19	15-May	3-Jun
5	15	3-Jun	18-Jun
1/2	16	18-Jun	4-Jul
3	16	4-Jul	20-Jul
<b>Total Days</b>		<b>66</b>	



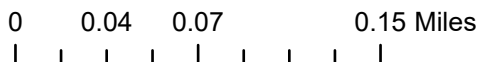


Source: Esri, USDA FSA, Esri Community Maps Contributors, State of North Dakota, © OpenStreetMap, Microsoft, Esri, TomTom, Garmin, SafeGraph, GeoTechnologies, Inc, METI/NASA, USGS, EPA, NPS, US Census Bureau, USDA, USFWS

- Perm. Barbed Wire
- Temp. Electric
- WPA Boundary

Produced by Audubon Wetland Management District  
 Produced: 2/2/2024  
 Basemap: NAIP Imagery

The USFWS makes no warranty for use of this map and cannot be held liable for actions or decisions based on map content. This map is to be used to determine grazing on WPAs in conjunction with a Special Use Permit. Map image is the intellectual property of Esri and is used herein under license. Copyright © 2019 Esri and its licensors. All rights reserved.



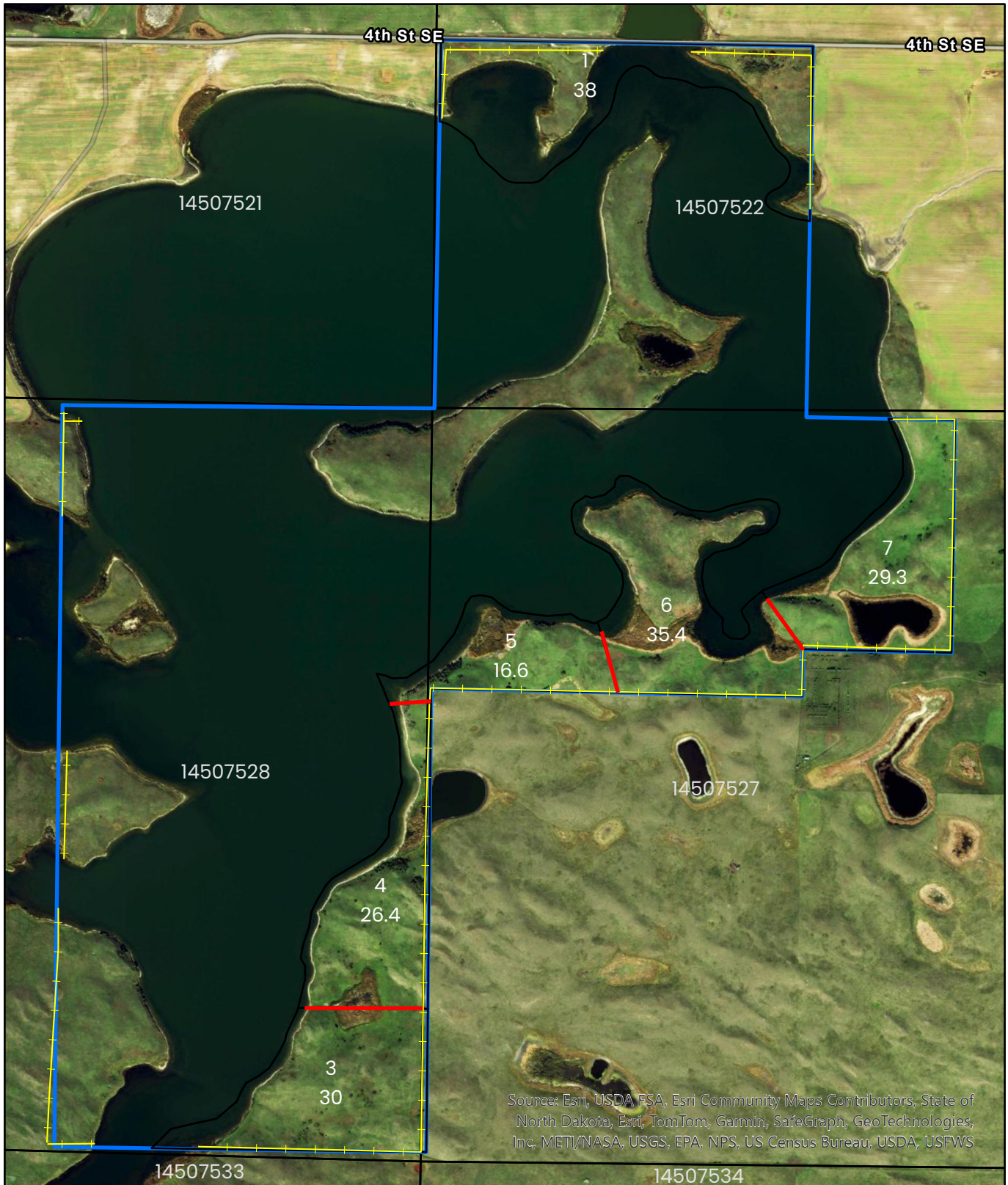
Datum: NAD 83



<b>2024 Cartwright WPA Grazing Rotation</b>			
30 Pairs, 1 Bull			
<b>Cell</b>	<b>Days</b>	<b>Date In</b>	<b>Date Out</b>
1	21	15-May	5-Jun
2	18	5-Jun	23-Jun
<b>Total Days</b>		<b>39</b>	

<b>2025 Cartwright WPA Grazing Rotation</b>			
30 Pairs, 1 Bull			
<b>Cell</b>	<b>Days</b>	<b>Date In</b>	<b>Date Out</b>
2	18	15-May	2-Jun
1	21	2-Jun	23-Jun
<b>Total Days</b>		<b>39</b>	



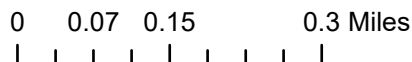


Source: Esri, USDA FSA, Esri Community Maps Contributors, State of North Dakota, Esri, TomTom, Garmin, SafeGraph, GeoTechnologies, Inc, METI/NASA, USGS, EPA, NPS, US Census Bureau, USDA, USFWS

- - - Perm. Barbed Wire
- Temp. Electric
- WPA Boundary

Produced by Audubon Wetland Management District  
 Produced: 2/2/2024  
 Basemap: NAIP Imagery

The USFWS makes no warranty for use of this map and cannot be held liable for actions or decisions based on map content. This map is to be used to determine grazing on WPAs in conjunction with a Special Use Permit. Map image is the intellectual property of Esri and is used herein under license. Copyright © 2019 Esri and its licensors. All rights reserved.



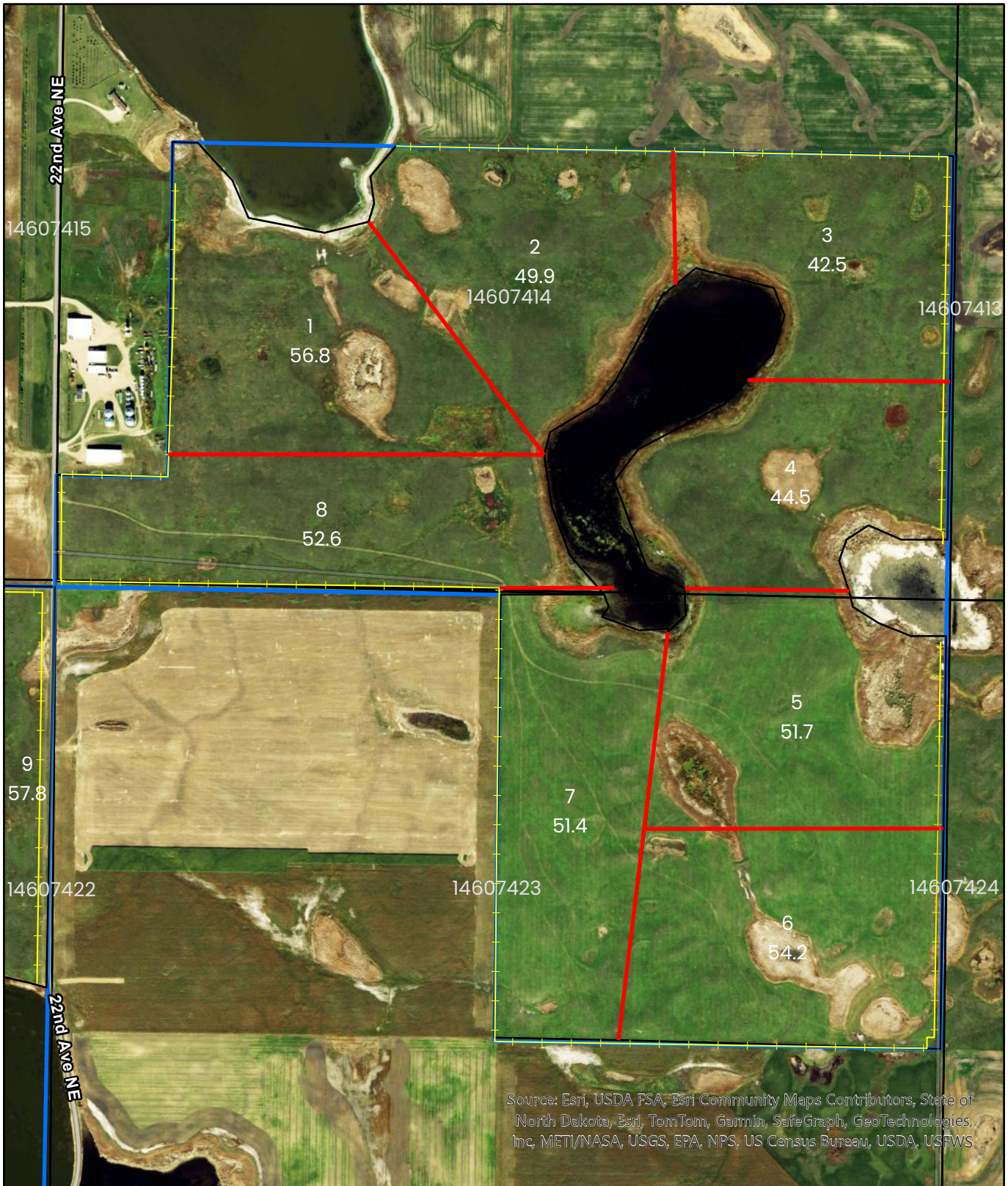
Datum: NAD 83

<b>2024 Davis WPA Grazing Rotation</b>			
30 Pairs, 1 Bull			
<b>Cell</b>	<b>Days</b>	<b>Date In</b>	<b>Date Out</b>
3	14	15-May	29-May
4 & 5	18	29-May	16-Jun
6	16	16-Jun	2-Jul
7	14	2-Jul	16-Jul
<b>Total Days</b>	<b>62</b>		

<b>2025 Davis WPA Grazing Rotation</b>			
30 Pairs, 1 Bull			
<b>Cell</b>	<b>Days</b>	<b>Date In</b>	<b>Date Out</b>
7	12	15-May	27-May
6	14	27-May	10-Jun
4 & 5	17	10-Jun	27-Jun
3	12	27-Jun	9-Jul
<b>Total Days</b>	<b>55</b>		

<b>2026 Davis WPA Grazing Rotation</b>			
30 Pairs, 1 Bull			
<b>Cell</b>	<b>Days</b>	<b>Date In</b>	<b>Date Out</b>
4 & 5	17	15-May	1-Jun
3	12	1-Jun	13-Jun
7	12	13-Jun	25-Jun
6	14	25-Jun	9-Jul
<b>Total Days</b>	<b>55</b>		



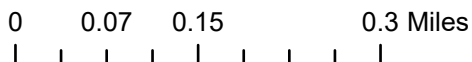


Source: Esri, USDA FSA, Esri Community Maps Contributors, State of North Dakota, Esri, TomTom, Garmin, SafeGraph, GeoTechnologies, Inc, METI/NASA, USGS, EPA, NPS, US Census Bureau, USDA, USFWS

- Perm. Barbed Wire
- Temp. Electric
- WPA Boundary

Produced by Audubon Wetland Management District  
 Produced: 2/2/2024  
 Basemap: NAIP Imagery

The USFWS makes no warranty for use of this map and cannot be held liable for actions or decisions based on map content. This map is to be used to determine grazing on WPAs in conjunction with a Special Use Permit. Map image is the intellectual property of Esri and is used herein under license. Copyright © 2019 Esri and its licensors. All rights reserved.



Datum: NAD 83



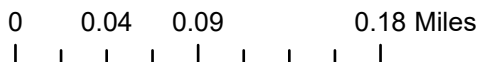


Source: Esri, USDA FSA, Esri Community Maps Contributors, State of North Dakota, © OpenStreetMap, Microsoft, Esri, TomTom, Garmin, SafeGraph, GeoTechnologies, Inc, METI/NASA, USGS, EPA, NPS, US Census Bureau, USDA, USFWS

- - - Perm. Barbed Wire
- Temp. Electric
- WPA Boundary

Produced by Audubon Wetland Management District  
 Produced: 2/2/2024  
 Basemap: NAIP Imagery

The USFWS makes no warranty for use of this map and cannot be held liable for actions or decisions based on map content. This map is to be used to determine grazing on WPAs in conjunction with a Special Use Permit. Map image is the intellectual property of Esri and is used herein under license. Copyright © 2019 Esri and its licensors. All rights reserved.

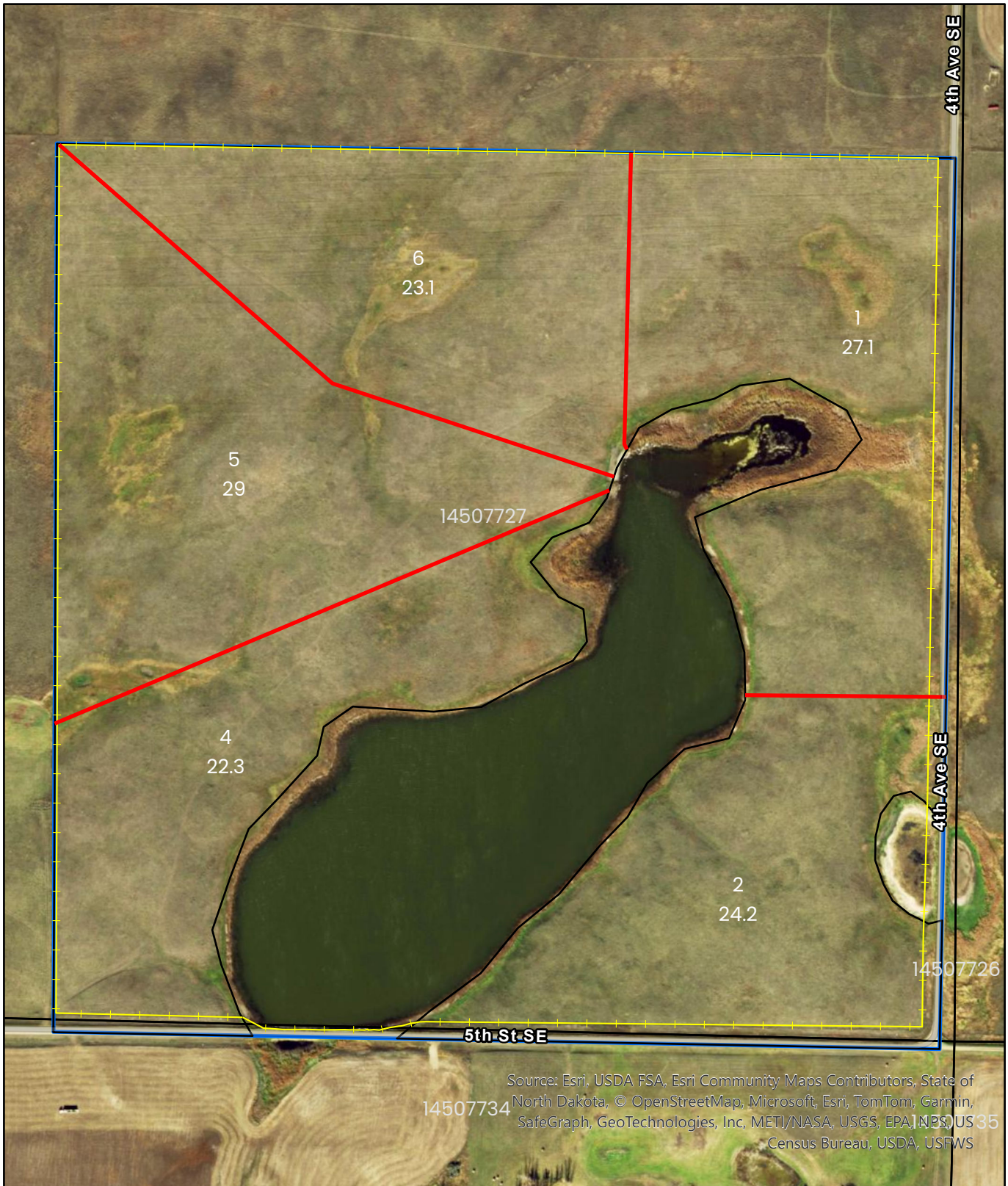


Datum: NAD 83



<b>2024 Goodrich/Weber WPAs Grazing Rotation</b>			
45 Pairs, 2 Bull			
<b>Cell</b>	<b>Days</b>	<b>Date In</b>	<b>Date Out</b>
9	15	15-May	30-May
10	9	30-May	8-Jun
8	14	8-Jun	22-Jun
7	14	22-Jun	6-Jul
6	14	6-Jul	20-Jul
<b>Total Days</b>		<b>66</b>	

<b>2025 Goodrich/Weber WPAs Grazing Rotation</b>			
45 Pairs, 2 Bull			
<b>Cell</b>	<b>Days</b>	<b>Date In</b>	<b>Date Out</b>
5	14	15-May	29-May
4	12	29-May	10-Jun
3	11	10-Jun	21-Jun
2	13	21-Jun	4-Jul
1	15	4-Jul	19-Jul
<b>Total Days</b>		<b>65</b>	

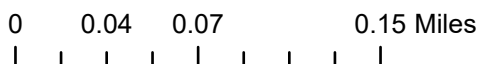


Source: Esri, USDA FSA, Esri Community Maps Contributors, State of North Dakota, © OpenStreetMap, Microsoft, Esri, TomTom, Garmin, SafeGraph, GeoTechnologies, Inc, METI/NASA, USGS, EPA, NPS, US 35 Census Bureau, USDA, USFWS

- - - Perm. Barbed Wire
- Temp. Electric
- WPA Boundary

Produced by Audubon Wetland Management District  
 Produced: 2/2/2024  
 Basemap: NAIP Imagery

The USFWS makes no warranty for use of this map and cannot be held liable for actions or decisions based on map content. This map is to be used to determine grazing on WPAs in conjunction with a Special Use Permit. Map image is the intellectual property of Esri and is used herein under license. Copyright © 2019 Esri and its licensors. All rights reserved.

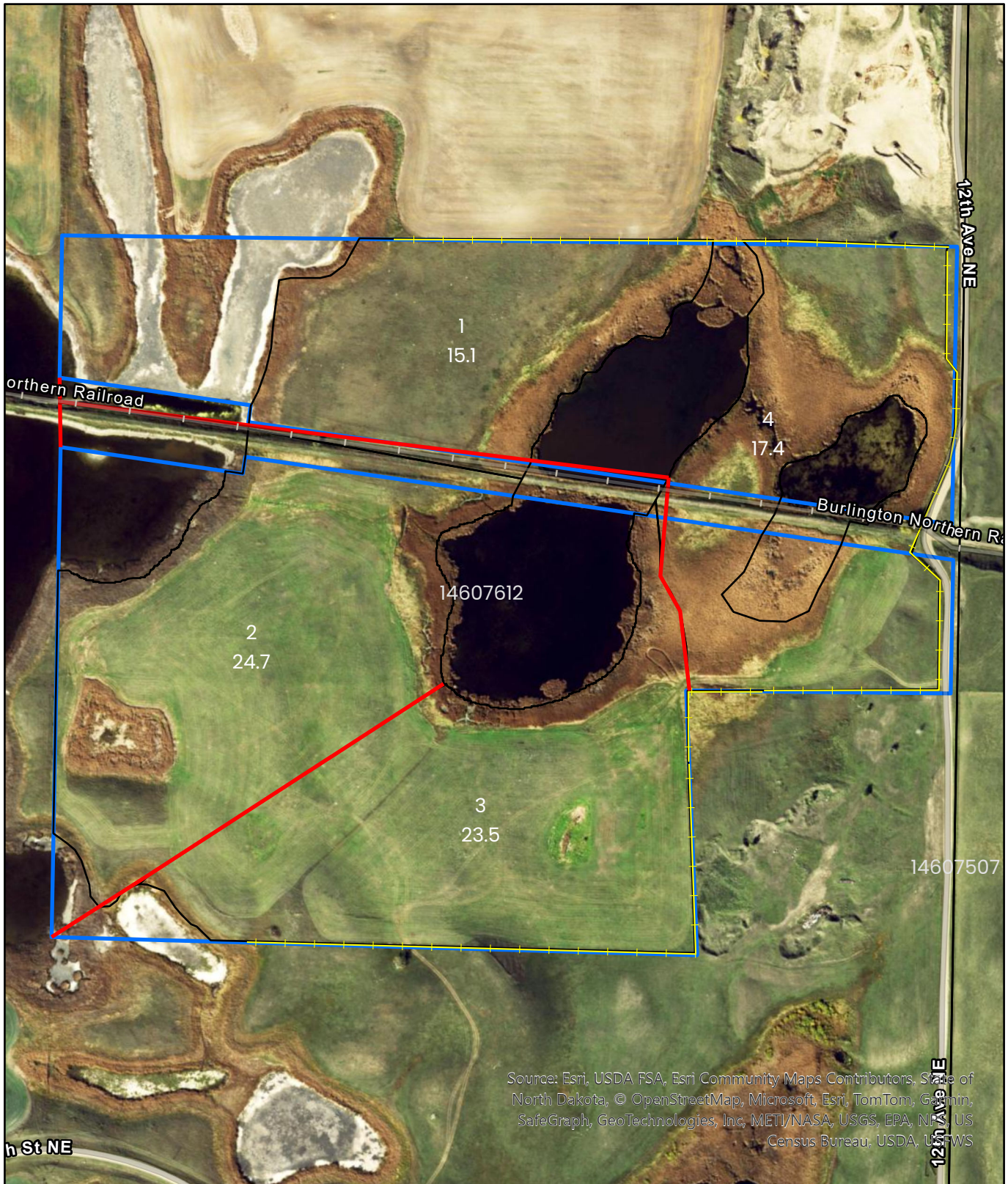




<b>2024 Grayson WPAs Grazing Rotation</b>			
30 Pairs, 1 Bull			
<b>Cell</b>	<b>Days</b>	<b>Date In</b>	<b>Date Out</b>
1	11	15-May	26-May
2	10	26-May	5-Jun
4	10	5-Jun	15-Jun
<b>Total Days</b>		<b>31</b>	

<b>2025 Grayson WPAs Grazing Rotation</b>			
30 Pairs, 1 Bull			
<b>Cell</b>	<b>Days</b>	<b>Date In</b>	<b>Date Out</b>
5	12	15-May	27-May
6	9	27-May	5-Jun
1	11	5-Jun	16-Jun
<b>Total Days</b>		<b>32</b>	

<b>2026 Grayson WPAs Grazing Rotation</b>			
30 Pairs, 1 Bull			
<b>Cell</b>	<b>Days</b>	<b>Date In</b>	<b>Date Out</b>
2	10	1-Jun	11-Jun
4	10	11-Jun	21-Jun
5	12	21-Jun	3-Jul
<b>Total Days</b>		<b>32</b>	

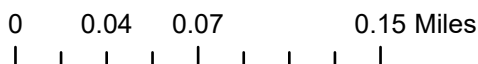


Source: Esri, USDA FSA, Esri Community Maps Contributors, State of North Dakota, © OpenStreetMap, Microsoft, Esri, TomTom, Garmin, SafeGraph, GeoTechnologies, Inc, METI/NASA, USGS, EPA, NPS, US Census Bureau, USDA, USFWS

- Perm. Barbed Wire
- Temp. Electric
- WPA Boundary

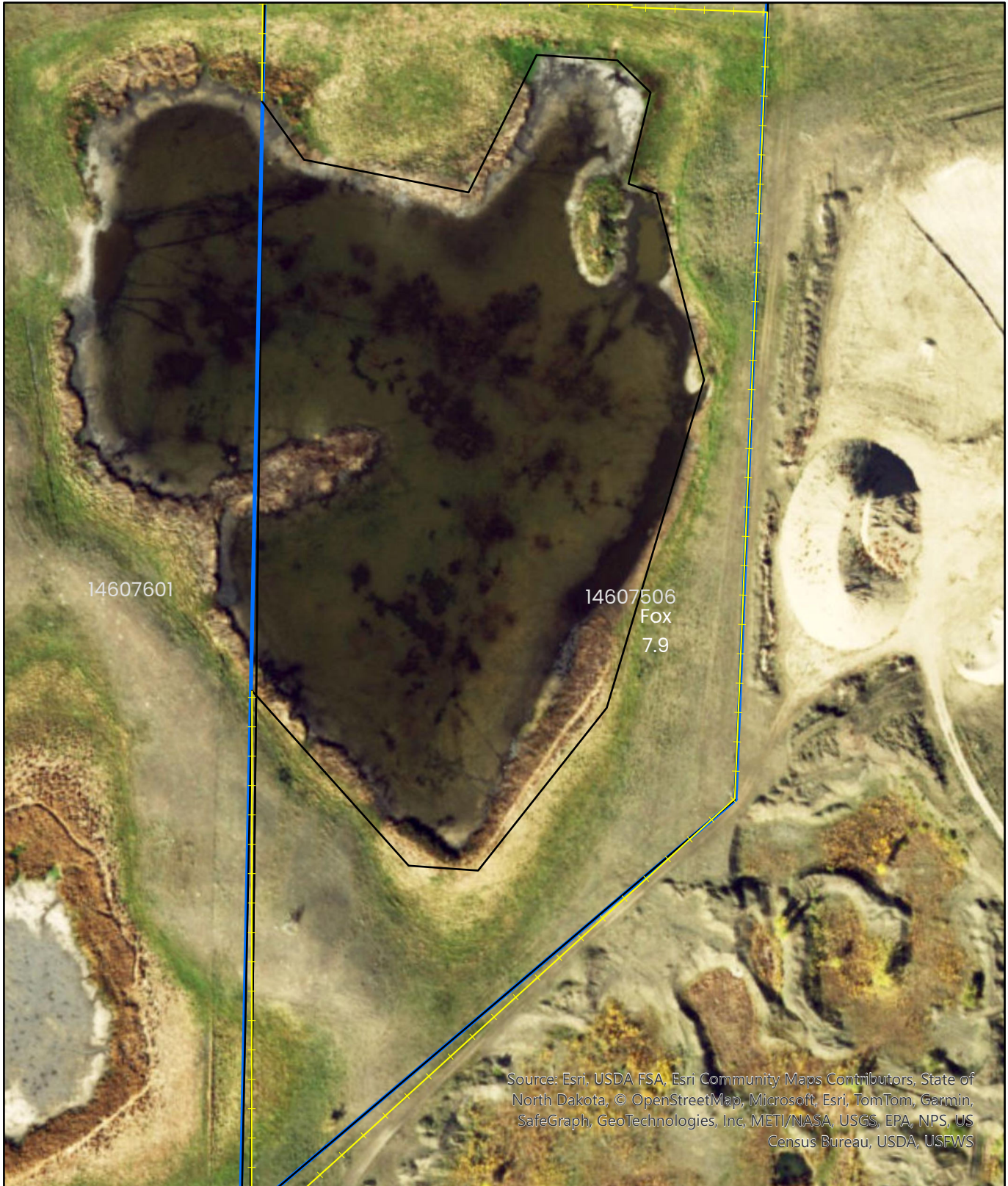
Produced by Audubon Wetland Management District  
 Produced: 2/2/2024  
 Basemap: NAIP Imagery

The USFWS makes no warranty for use of this map and cannot be held liable for actions or decisions based on map content. This map is to be used to determine grazing on WPAs in conjunction with a Special Use Permit. Map image is the intellectual property of Esri and is used herein under license. Copyright © 2019 Esri and its licensors. All rights reserved.



Datum: NAD 83



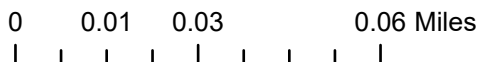


Source: Esri, USDA FSA, Esri Community Maps Contributors, State of North Dakota, © OpenStreetMap, Microsoft, Esri, TomTom, Garmin, SafeGraph, GeoTechnologies, Inc, METI/NASA, USGS, EPA, NPS, US Census Bureau, USDA, USFWS

- Perm. Barbed Wire
- Temp. Electric
- WPA Boundary

Produced by Audubon Wetland Management District  
 Produced: 2/2/2024  
 Basemap: NAIP Imagery

The USFWS makes no warranty for use of this map and cannot be held liable for actions or decisions based on map content. This map is to be used to determine grazing on WPAs in conjunction with a Special Use Permit. Map image is the intellectual property of Esri and is used herein under license. Copyright © 2019 Esri and its licensors. All rights reserved.



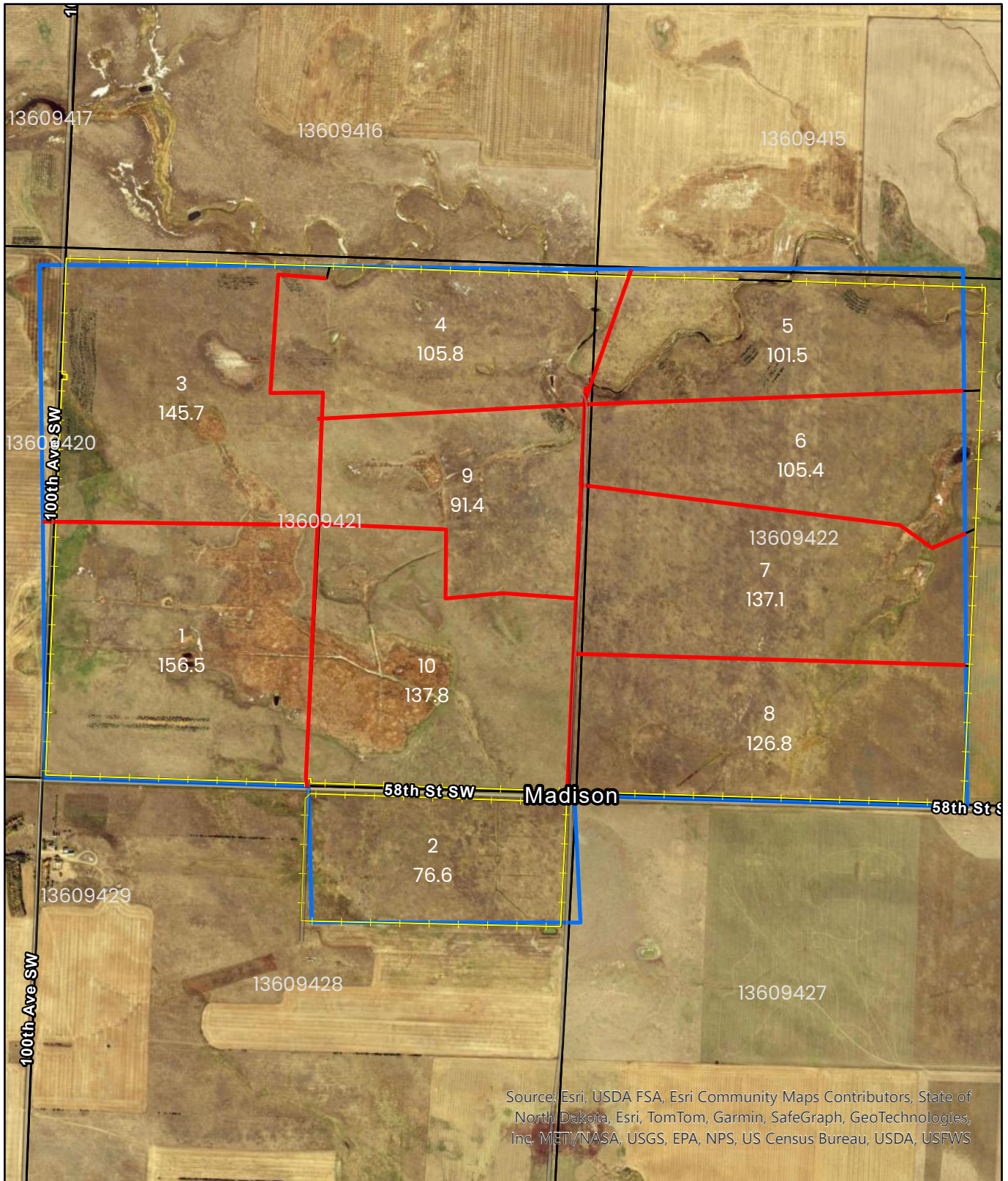
Datum: NAD 83

<b>2024 Kreiter/Fox WPAs Grazing Rotation</b>			
30 Pairs, 1 Bull			
<b>Cell</b>	<b>Days</b>	<b>Date In</b>	<b>Date Out</b>
1/2	14	15-May	29-May
3/4	14	29-May	12-Jun
5	5	12-Jun	17-Jun
<b>Total Days</b>		<b>33</b>	

<b>2025 Kreiter/Fox WPAs Grazing Rotation</b>			
30 Pairs, 1 Bull			
<b>Cell</b>	<b>Days</b>	<b>Date In</b>	<b>Date Out</b>
5	5	15-May	20-May
1/2	14	20-May	3-Jun
3/4	14	3-Jun	17-Jun
<b>Total Days</b>		<b>33</b>	

<b>2026 Kreiter/Fox WPAs Grazing Rotation</b>			
30 Pairs, 1 Bull			
<b>Cell</b>	<b>Days</b>	<b>Date In</b>	<b>Date Out</b>
3/4	14	15-May	29-May
1/2	14	29-May	12-Jun
<b>Total Days</b>		<b>28</b>	



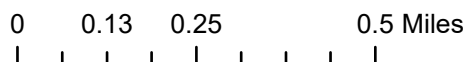


Source: Esri, USDA FSA, Esri Community Maps Contributors, State of North Dakota, Esri, TomTom, Garmin, SafeGraph, GeoTechnologies, Inc, METI/NASA, USGS, EPA, NPS, US Census Bureau, USDA, USFWS

- Perm. Barbed Wire
- Temp. Electric
- WPA Boundary

Produced by Audubon Wetland Management District  
 Produced: 2/2/2024  
 Basemap: NAIP Imagery

The USFWS makes no warranty for use of this map and cannot be held liable for actions or decisions based on map content. This map is to be used to determine grazing on WPAs in conjunction with a Special Use Permit. Map image is the intellectual property of Esri and is used herein under license. Copyright © 2019 Esri and its licensors. All rights reserved.



Datum: NAD 83

<b>2024 Hillview WPAs Grazing Rotation</b>			
90 Pairs, 5 Bull			
Cell	Days	Date In	Date Out
2	10	15-May	25-May
10	18	25-May	12-Jun
9	12	12-Jun	24-Jun
4	14	24-Jun	8-Jul
3	19	8-Jul	27-Jul
<b>Total Days</b>			<b>73</b>

<b>2025 Hillview WPAs Grazing Rotation</b>			
90 Pairs, 5 Bull			
Cell	Days	Date In	Date Out
8	16	30-May	15-Jun
7	18	15-Jun	3-Jul
6	14	3-Jul	17-Jul
5	13	17-Jul	30-Jul
10	18	30-Jul	17-Aug
<b>Total Days</b>			<b>79</b>

<b>2026 Hillview WPAs Grazing Rotation</b>			
90 Pairs, 5 Bull			
Cell	Days	Date In	Date Out
1	20	15-May	4-Jun
3	19	4-Jun	23-Jun
4	14	23-Jun	7-Jul
9	12	7-Jul	19-Jul
5	13	19-Jul	1-Aug
<b>Total Days</b>			<b>78</b>

<b>2027 Hillview WPAs Grazing Rotation</b>			
90 Pairs, 5 Bull			
Cell	Days	Date In	Date Out
2	10	30-May	9-Jun
1	20	9-Jun	29-Jun
6	14	29-Jun	13-Jul
7	18	13-Jul	31-Jul
8	16	31-Jul	16-Aug
<b>Total Days</b>			<b>78</b>

<b>2028 Hillview WPAs Grazing Rotation</b>			
30 Pairs, 1 Bull			
Cell	Days	Date In	Date Out
<b>REST</b>			



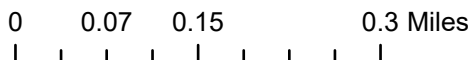


Source: Esri, USDA FSA, Esri Community Maps Contributors, State of North Dakota, Esri, TomTom, Garmin, SafeGraph, GeoTechnologies, Inc, METI/NASA, USGS, EPA, NPS, US Census Bureau, USDA, USFWS

- - - Perm. Barbed Wire
- Temp. Electric
- WPA Boundary

Produced by Audubon Wetland Management District  
 Produced: 2/2/2024  
 Basemap: NAIP Imagery

The USFWS makes no warranty for use of this map and cannot be held liable for actions or decisions based on map content. This map is to be used to determine grazing on WPAs in conjunction with a Special Use Permit. Map image is the intellectual property of Esri and is used herein under license. Copyright © 2019 Esri and its licensors. All rights reserved.



Datum: NAD 83

<b>2024 Lake Williams North WPA Grazing Rotation</b>			
45 Pairs, 2 Bull			
<b>Cell</b>	<b>Days</b>	<b>Date In</b>	<b>Date Out</b>
1	14	15-May	29-May
2	16	29-May	14-Jun
<b>Total Days</b>		<b>30</b>	

<b>2025 Lake Williams North WPA Grazing Rotation</b>			
45 Pairs, 2 Bull			
<b>Cell</b>	<b>Days</b>	<b>Date In</b>	<b>Date Out</b>
1	14	30-May	13-Jun
2	16	13-Jun	29-Jun
<b>Total Days</b>		<b>30</b>	

<b>2026 Lake Williams North WPA Grazing Rotation</b>			
45 Pairs, 2 Bull			
<b>Cell</b>	<b>Days</b>	<b>Date In</b>	<b>Date Out</b>
2	16	15-May	31-May
1	14	31-May	14-Jun
<b>Total Days</b>		<b>30</b>	



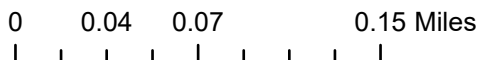


Source: Esri, USDA FSA, Esri Community Maps Contributors, State of North Dakota, © OpenStreetMap, Microsoft, Esri, TomTom, Garmin, SafeGraph, GeoTechnologies, Inc, METI/NASA, USGS, EPA, NPS, US Census Bureau, USDA, USFWS

- Perm. Barbed Wire
- Temp. Electric
- WPA Boundary

Produced by Audubon Wetland Management District  
 Produced: 2/2/2024  
 Basemap: NAIP Imagery

The USFWS makes no warranty for use of this map and cannot be held liable for actions or decisions based on map content.  
 This map is to be used to determine grazing on WPAs in conjunction with a Special Use Permit.  
 Map image is the intellectual property of Esri and is used herein under license.  
 Copyright © 2019 Esri and its licensors. All rights reserved.



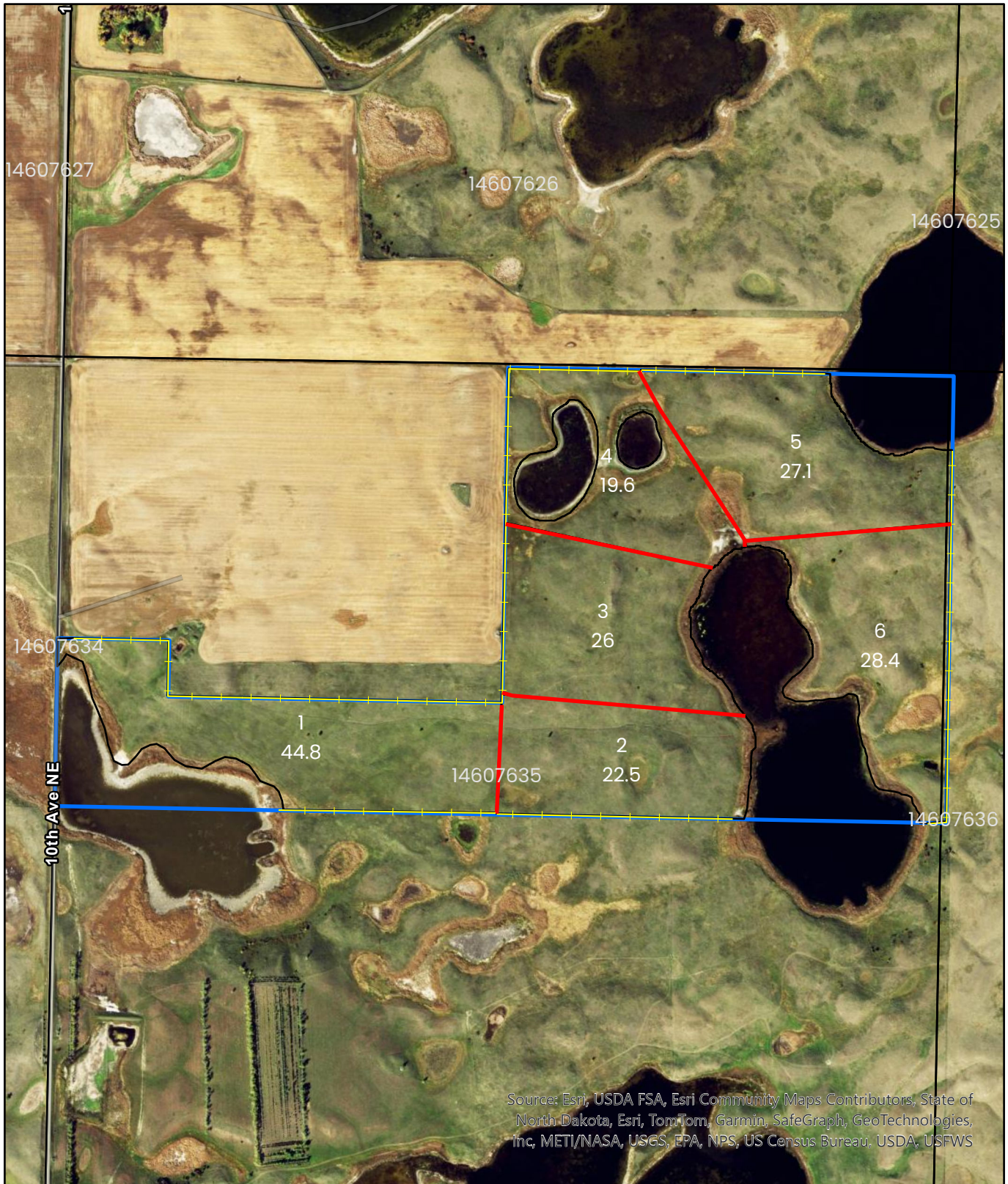
Datum: NAD 83

<b>2024 Stute WPAs Grazing Rotation</b>			
30 Pairs, 1 Bull			
<b>Cell</b>	<b>Days</b>	<b>Date In</b>	<b>Date Out</b>
1/2	20	15-May	4-Jun
<b>Total Days</b>		<b>20</b>	

<b>2025 Stute WPAs Grazing Rotation</b>			
30 Pairs, 1 Bull			
<b>Cell</b>	<b>Days</b>	<b>Date In</b>	<b>Date Out</b>
1/2	20	30-May	19-Jun
<b>Total Days</b>		<b>20</b>	

<b>2026 Stute WPAs Grazing Rotation</b>			
30 Pairs, 1 Bull			
<b>Cell</b>	<b>Days</b>	<b>Date In</b>	<b>Date Out</b>
1/2	20	1-Jun	21-Jun
<b>Total Days</b>		<b>20</b>	



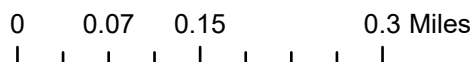


Source: Esri, USDA FSA, Esri Community Maps Contributors, State of North Dakota, Esri, TomTom, Garmin, SafeGraph, GeoTechnologies, Inc, METI/NASA, USGS, EPA, NPS, US Census Bureau, USDA, USFWS

- Perm. Barbed Wire
- Temp. Electric
- WPA Boundary

Produced by Audubon Wetland Management District  
 Produced: 2/2/2024  
 Basemap: NAIP Imagery

The USFWS makes no warranty for use of this map and cannot be held liable for actions or decisions based on map content. This map is to be used to determine grazing on WPAs in conjunction with a Special Use Permit. Map image is the intellectual property of Esri and is used herein under license. Copyright © 2019 Esri and its licensors. All rights reserved.



Datum: NAD 83

<b>2024 Thorson WPAs Grazing Rotation</b>			
30 Pairs, 1 Bull			
<b>Cell</b>	<b>Days</b>	<b>Date In</b>	<b>Date Out</b>
1	18	15-May	2-Jun
2/3	19	2-Jun	21-Jun
4/5	18	21-Jun	9-Jul
6	12	9-Jul	21-Jul
<b>Total Days</b>		<b>67</b>	

<b>2025 Thorson WPAs Grazing Rotation</b>			
30 Pairs, 1 Bull			
<b>Cell</b>	<b>Days</b>	<b>Date In</b>	<b>Date Out</b>
6	12	1-Jun	13-Jun
5	11	13-Jun	24-Jun
4	8	24-Jun	2-Jul
3	10	2-Jul	12-Jul
<b>Total Days</b>		<b>41</b>	

<b>2026 Thorson WPAs Grazing Rotation</b>			
30 Pairs, 1 Bull			
<b>Cell</b>	<b>Days</b>	<b>Date In</b>	<b>Date Out</b>
1	18	1-Jun	19-Jun
2	10	19-Jun	29-Jun
3	10	29-Jun	9-Jul
4	8	9-Jul	17-Jul
<b>Total Days</b>		<b>46</b>	



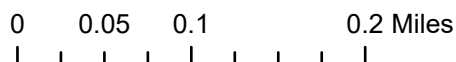


Source: Esri, USDA FSA, Esri Community Maps Contributors, State of North Dakota, © OpenStreetMap, Microsoft, Esri, TomTom, Garmin, SafeGraph, GeoTechnologies, Inc, METI/NASA, USGS, EPA, NPS, US Census Bureau, USDA, USFWS

- - - Perm. Barbed Wire
- Temp. Electric
- WPA Boundary

Produced by Audubon Wetland Management District  
 Produced: 2/2/2024  
 Basemap: NAIP Imagery

The USFWS makes no warranty for use of this map and cannot be held liable for actions or decisions based on map content. This map is to be used to determine grazing on WPAs in conjunction with a Special Use Permit. Map image is the intellectual property of Esri and is used herein under license. Copyright © 2019 Esri and its licensors. All rights reserved.



Datum: NAD 83

<b>2024 Zarek WPA Grazing Rotation</b>			
30 Pairs, 1 Bull			
<b>Cell</b>	<b>Days</b>	<b>Date In</b>	<b>Date Out</b>
1	20	15-May	4-Jun
2	20	4-Jun	24-Jun
3	26	24-Jun	20-Jul
<b>Total Days</b>		<b>66</b>	

<b>2025 Zarek WPA Grazing Rotation</b>			
30 Pairs, 1 Bull			
<b>Cell</b>	<b>Days</b>	<b>Date In</b>	<b>Date Out</b>
2	18	15-May	2-Jun
3	17	2-Jun	19-Jun
1	24	19-Jun	13-Jul
<b>Total Days</b>		<b>59</b>	

<b>2026 Zarek WPA Grazing Rotation</b>			
30 Pairs, 1 Bull			
<b>Cell</b>	<b>Days</b>	<b>Date In</b>	<b>Date Out</b>
3	23	15-May	7-Jun
1	17	7-Jun	24-Jun
2	16	24-Jun	10-Jul
<b>Total Days</b>		<b>56</b>	