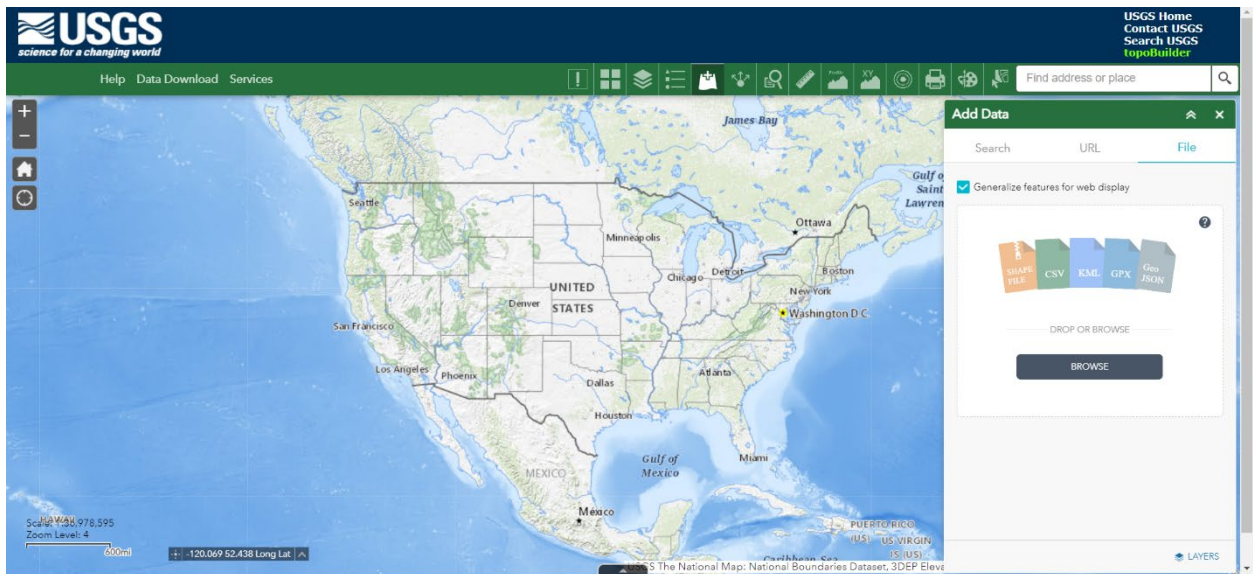
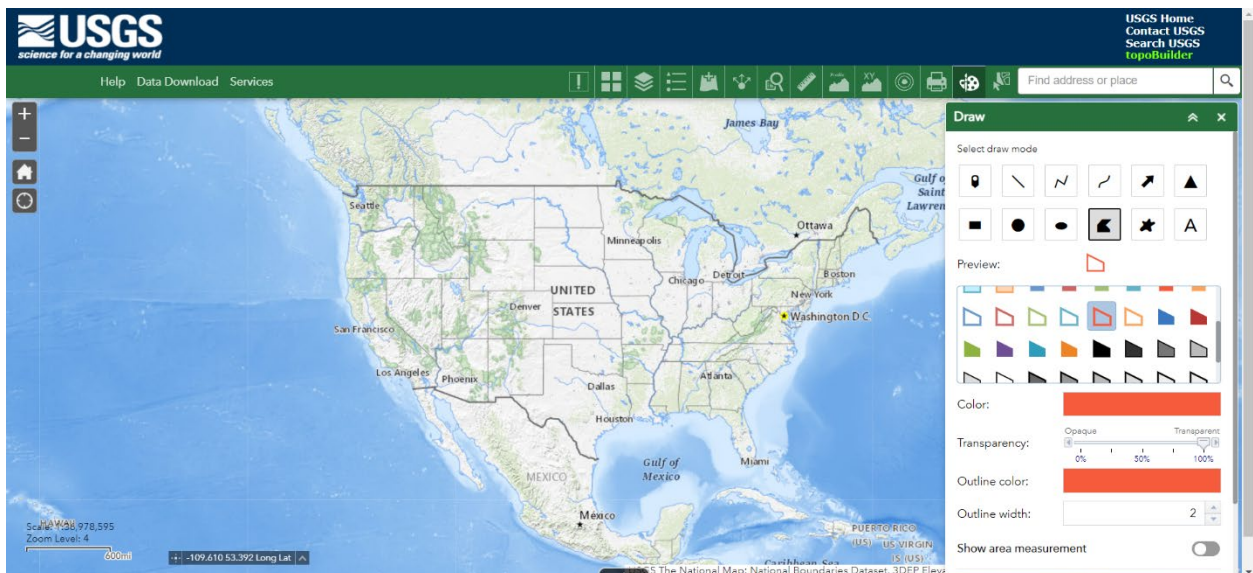


The National Map by USGS can help create maps to fulfill permit or protocol requirements.

- 1) Navigate to <https://apps.nationalmap.gov/viewer/>
- 2) Create a project area with either option a. or b. below.
  - a. Upload a zipped shapefile, [Google Earth kml](#), or other file of the project area by clicking the Add Data button on the green ribbon and clicking the File tab in the Add Data pane. Then, skip to Step 3.



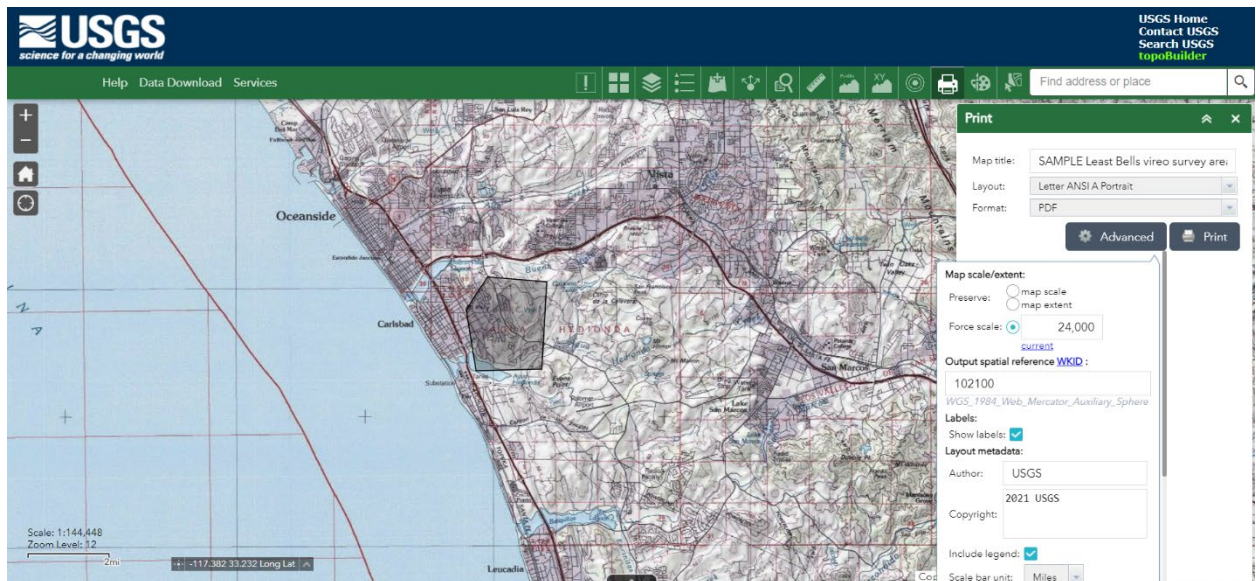
- b. Draw a project area in the map by clicking the Draw button on the green ribbon and clicking the polygon option under "Select draw mode." Zoom to your project area, select a color and transparency, then single click to begin creating your project area. When you have completed your polygon, double click to finish.



The second part of option b. is to re-name your newly drawn project area. There's no direct way to do this, so this is a workaround. Click the Select button on the green ribbon

and click and drag your mouse over your project area. Then, in Select pane click the three dots next to “Areas”. Click “Create Layer.” Give your new layer a name like “Project Area.” Click “Clear” in the Select pane. Click the Layer List in the green ribbon and un-check Areas, leaving only your new Project Area checked.

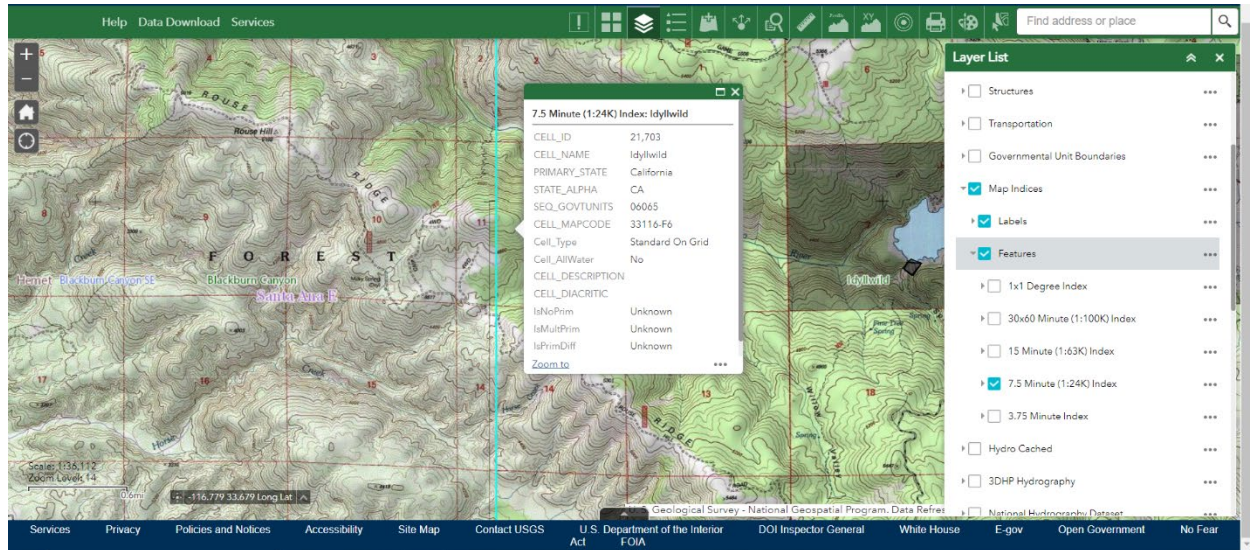
- 3) Change the basemap to USA Topo Maps by clicking the Basemap button on the green ribbon and clicking USA Topo Maps in the Basemap Gallery pane.
- 4) Center your project area in the map frame by clicking the Layer List button on the green ribbon and clicking the three dots on the right side of your new Project’s Layer name. Click Zoom To. Don’t worry if you lose the basemap in the background, it will show up in the final map.
- 5) Export the map by clicking the Print button on the green ribbon. For Layout, choose either Letter ANSI A (8.5 x 11) Landscape or Letter ANSI A Portrait. Tabloid ANSI B (11 x 17) Landscape or Tabloid ANSI B Portrait may also be selected. For Format, you can select either PDF or JPG. Change the Map title to your desired title (it auto-populates “The National Map Advanced Viewer”). Then, click the Advanced button. Select the circle next to Force scale and type in 24000. The Author and Copyright boxes are editable, so if there’s any more information to include it can be added there. For example, the name of the 7.5 minute quadrangle can be added here (the next page of this document explains how to find that information). Then, click Print. The file will be produced. Click on the title of the map on the list. JPG files will open in a new tab. You can right-click on it to download it.





There are two different ways to find the name of the 7.5 minute quadrangle the project area is in.

Click the Layer List on the green ribbon. Scroll down to Map Indices, check the box on the left, and expand the group by clicking the arrow that is pointing right. Expand the Features group, and uncheck all boxes except 7.5 Minute (1:24K) Index. Click next to your project. A pop-up will appear, with the text “7.5 Minute (1:24K) Index: [quadrangle name].”



The other way to find the name is to go to <https://store.usgs.gov/map-locator> and zoom to your project area. The repeating green labels indicate the name of the quadrangle.

