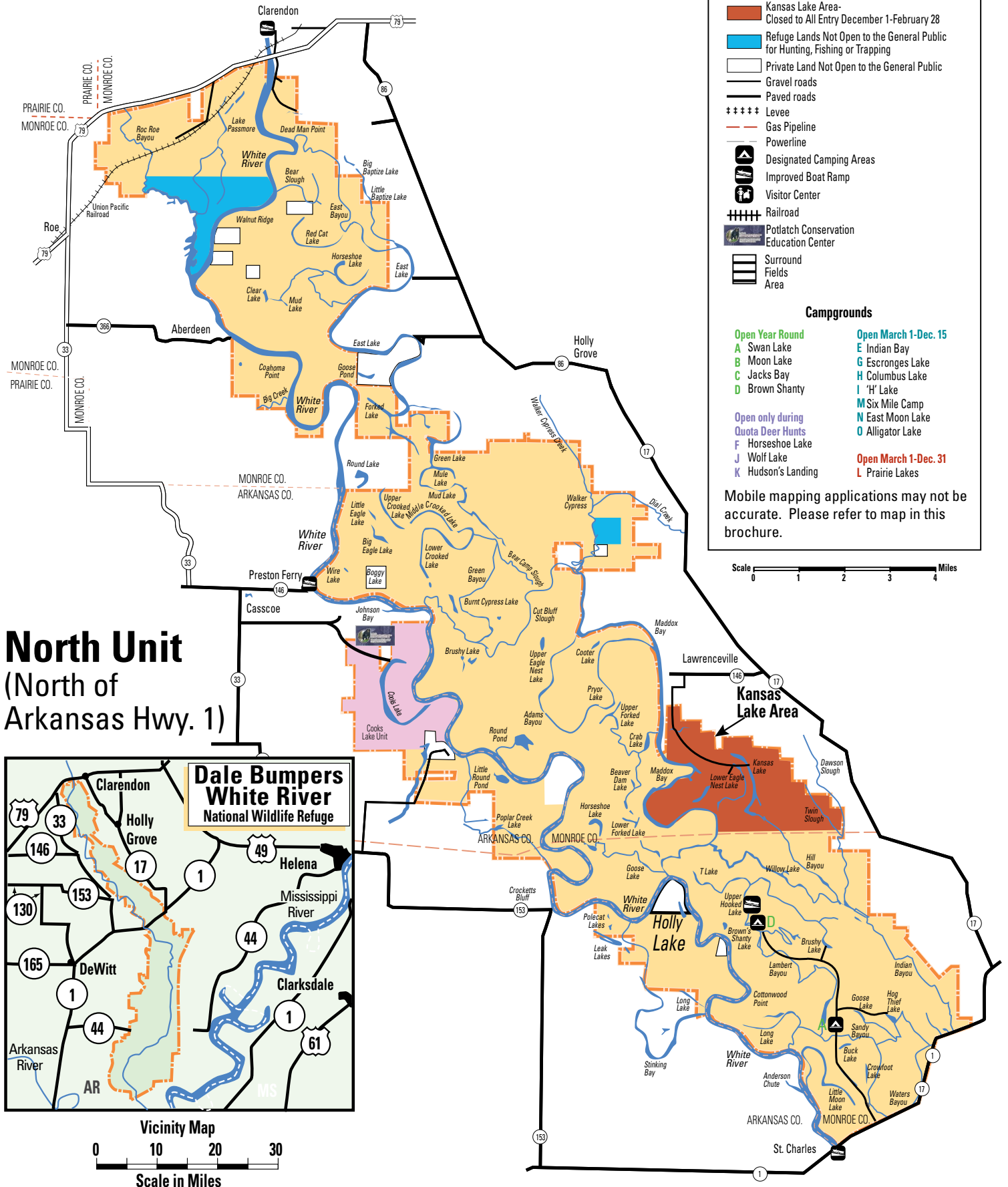


Dale Bumpers White River

National Wildlife Refuge

Located in Arkansas, Monroe, Phillips and Desha counties

Note: Refuge lands within existing outtracts and Trusten Holder WMA not shown.



Dale Bumpers White River

National Wildlife Refuge

Located in Arkansas, Monroe, Phillips and Desha counties

Note: Refuge lands within existing outtracts and Trusten Holder WMA not shown.

Legend

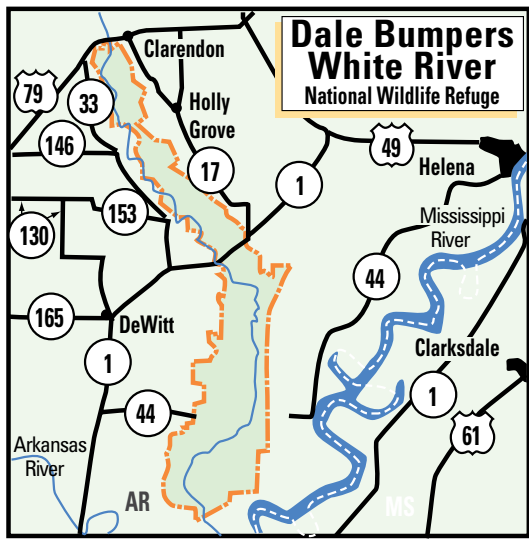
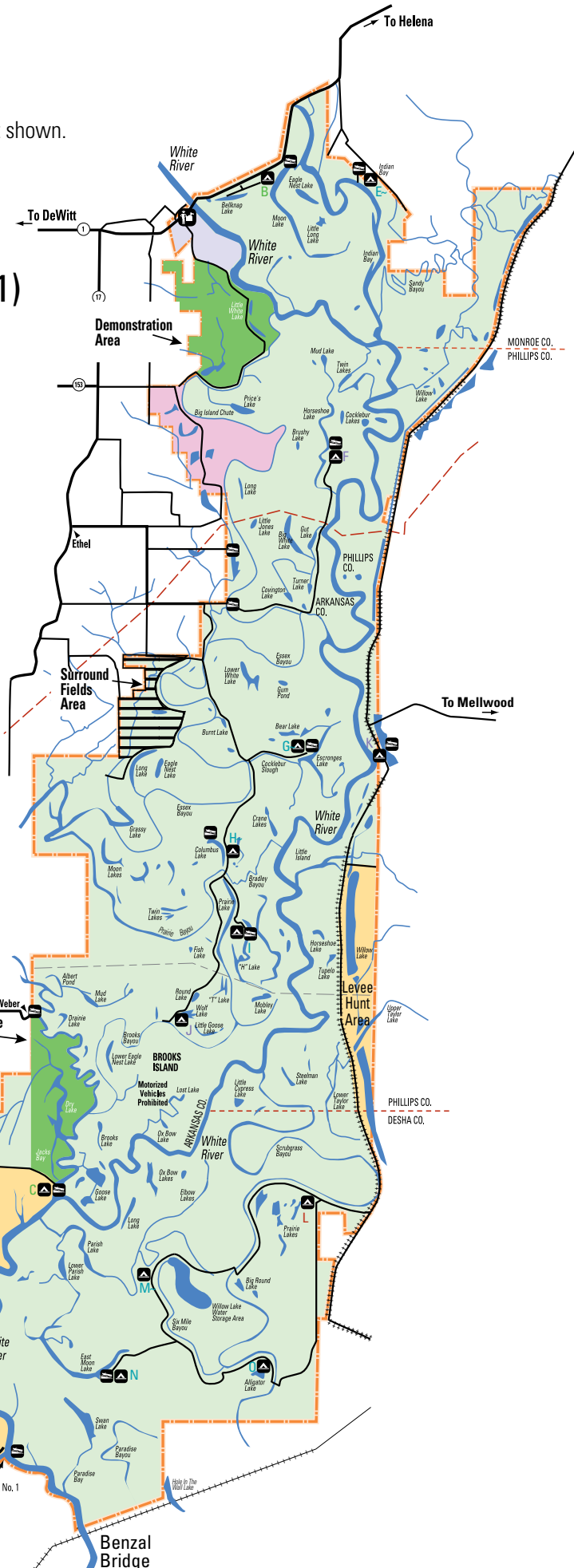
- Refuge Boundary
- Area Closed to All Entry (see back)
- Area Closed to All Entry November 1-February 28
- Waterfowl Hunt Areas
- Area Closed to All Hunting
- Kansas Lake Area-Closed to All Entry December 1-February 28
- Refuge Lands Not Open to the General Public for Hunting, Fishing or Trapping
- Private Land Not Open to the General Public
- Gravel roads
- Paved roads
- Levee
- Gas Pipeline
- Powerline
- Designated Camping Areas
- Improved Boat Ramp
- Visitor Center
- Railroad
- Potlatch Conservation Education Center
- Surround Fields Area

Campgrounds

Open Year Round	Open March 1-Dec. 15
A Swan Lake	E Indian Bay
B Moon Lake	G Escrowages Lake
C Jacks Bay	H Columbus Lake
D Brown Shanty	I 'H' Lake
Open only during Quota Deer Hunts	M Six Mile Camp
J Horseshoe Lake	N East Moon Lake
K Wolf Lake	O Alligator Lake
L Hudson's Landing	Open March 1-Dec. 31
	L Prairie Lakes

Mobile mapping applications may not be accurate. Please refer to map in this brochure.

South Unit (South of Arkansas Hwy. 1)



Vicinity Map
Scale in Miles
0 10 20 30