



U.S. Fish & Wildlife Service

Baring Division

Moosehorn National Wildlife Refuge Fishing Regulations

Welcome

Moosehorn National Wildlife Refuge was established in 1937 and is managed by the U.S. Fish and Wildlife Service as a refuge and breeding ground for migratory birds, endangered species and other wildlife. The refuge consists of two divisions totaling 29,615 acres. The Baring Division is located southwest of Calais and the Edmunds Division is located along Cobscook Bay near the Oenys River. The varied habitat of Moosehorn NWR supports many other wildlife species including birds, mammals, reptiles, fish, and amphibians.

Moosehorn National Wildlife Refuge
103 Headquarters Road
Baring, ME 04694 Tel: 207-454-7161
U.S. Fish & Wildlife Service
1-800-344-WILD
April 2023

Prohibited Activities

- By law, recreational activities on national wildlife refuges are prohibited unless expressly permitted.
- Possession of alcoholic beverages
- Camping and Fires
- Flowages, unless otherwise marked, are not open to public fishing. Fish in these areas are reserved as food for birds and other wildlife.
- ATVs are prohibited on Moosehorn National Wildlife Refuge.
- Pets must be kept on leash. Leash length should not exceed 10 feet.
- Outboard motors, bicycles/any other mechanized device (motorized ice augers), are prohibited in the Wilderness Area portion of the Refuge (Bearce and Conic Lake). Motors are allowed on Vose Pond in accordance with State Regulations.
- Littering is prohibited.

This is a unit of the National Wildlife Refuge System, a network of lands and waters managed for the benefit of wildlife and people.



Hunting and Fishing Regulations

Hunting and fishing regulations are designed to provide safe recreational opportunities through wise use of renewable wildlife resources. Hunting and fishing are permitted in accordance with Federal regulations governing public use on National Wildlife Refuges as set forth in Title 50 of the Code of Federal Regulations.

Hunting and fishing will be in accordance with applicable State of Maine regulations subject to the conditions stated below.

General Provisions:

- Sport fishing on Moosehorn NWR follows all Maine State Fishing Regulations.
- You are responsible for knowing Federal Laws and Regulations. These regulations are available at the refuge Headquarters.

Refuge Regulations:

- Fishing is only permitted in areas designated as "Public Fishing Areas" with signs (see map).
- Areas open to fishing on the refuge include the following: Bearce Lake, Conic Lake, Vose Pond, the West Branch of the Magurrewock, Moosehorn Stream, Barn Meadow Brook, Mahar Brook, and Cranberry Brook.
- Ledge and James Pond are open to fishing by state regulations; refuge access is by foot or bicycle only. Live bait is illegal on Ledge Pond (dead fish, salmon eggs, or worms are permitted).
- Ice Fishing is permitted on the following areas: Baring Division: Bearce Lake, Conic Lake, James Pond, and Vose Pond.

Vehicles

Licensed motor vehicles are permitted only on designated refuge roads. ATVs and UTVs are prohibited. The speed limit on refuge roads is 25 miles per hour.

Boats

Outboard motors are prohibited on Bearce and Conic Lakes, which are located in the wilderness area. Motors are allowed on Vose Pond. Canoeing is limited to the lakes open to fishing only.

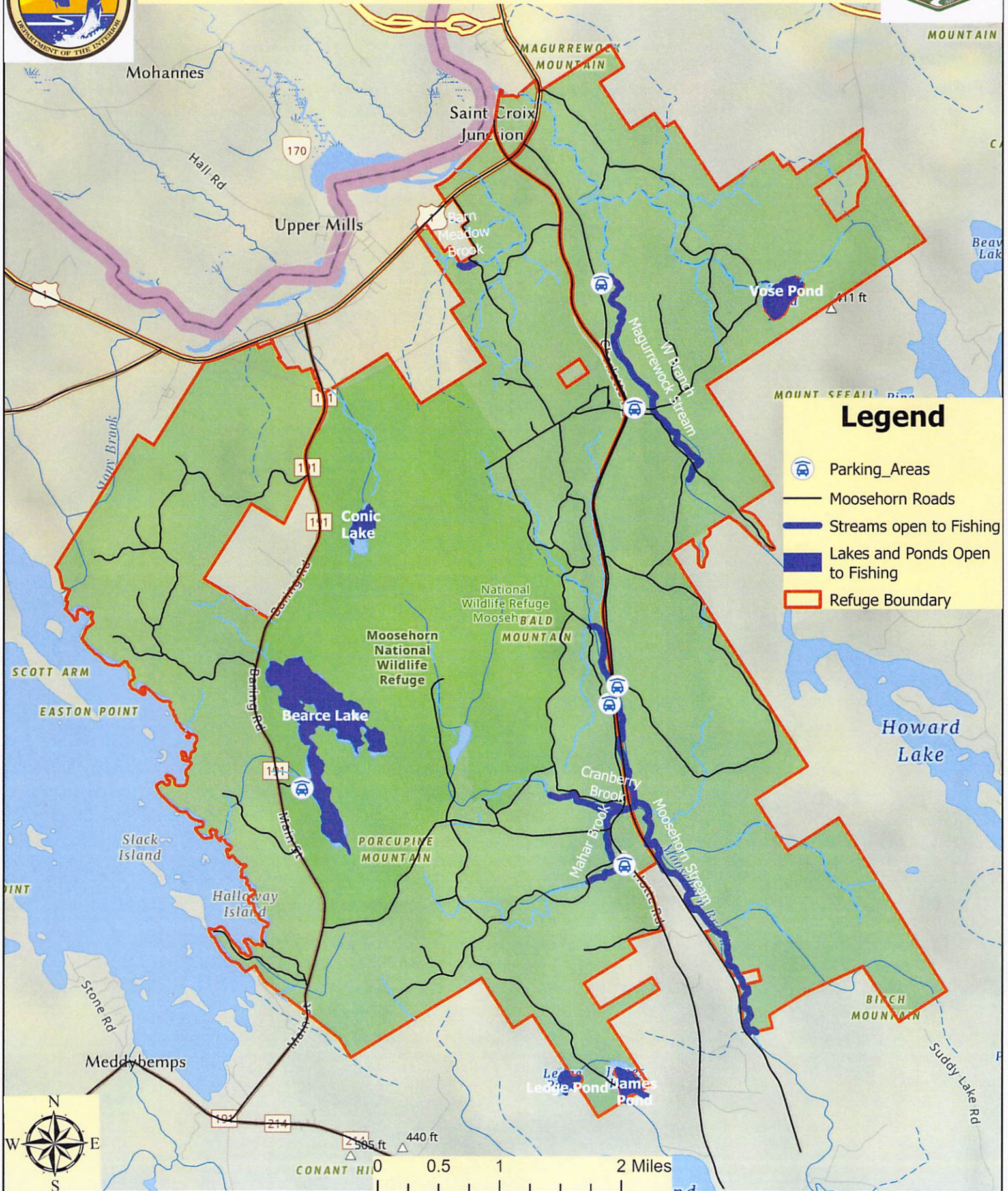
Access

Anglers may only access the Refuge half an hour before legal sunrise until half an hour after legal sunset.

- The following roads will be open for vehicular access when conditions permit (Late Spring-Fall): Bearce Lake Boat Ramp Access, Goodall Heath Road to Vose Pond Access. Note Roads/Trails may be closed during the year due to high fire danger, foul weather, road conditions, or at Management discretion. You must park so that the roads are not blocked.



Fishing Map, Baring Division, Moosehorn National Wildlife Refuge



Legend

- Parking Areas
- Moosehorn Roads
- Streams open to Fishing
- Lakes and Ponds Open to Fishing
- Refuge Boundary

