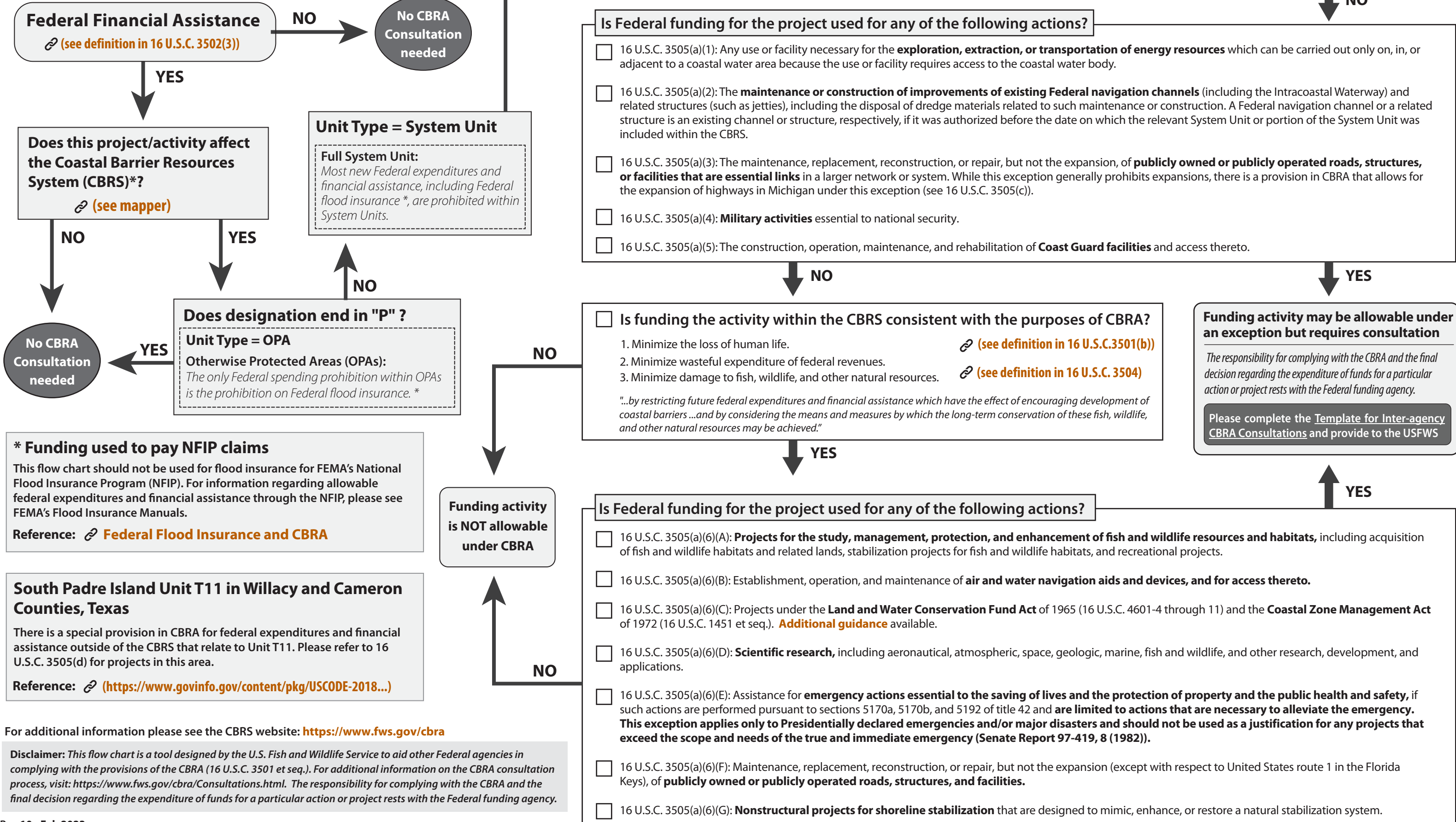




# Coastal Barrier Resources Act (CBRA)

## Consultations Flow Chart



**\* Funding used to pay NFIP claims**  
 This flow chart should not be used for flood insurance for FEMA's National Flood Insurance Program (NFIP). For information regarding allowable federal expenditures and financial assistance through the NFIP, please see FEMA's Flood Insurance Manuals.  
 Reference: [Federal Flood Insurance and CBRA](#)

**South Padre Island Unit T11 in Willacy and Cameron Counties, Texas**  
 There is a special provision in CBRA for federal expenditures and financial assistance outside of the CBRS that relate to Unit T11. Please refer to 16 U.S.C. 3505(d) for projects in this area.  
 Reference: <https://www.govinfo.gov/content/pkg/USCODE-2018...>

For additional information please see the CBRS website: <https://www.fws.gov/cbra>

**Disclaimer:** This flow chart is a tool designed by the U.S. Fish and Wildlife Service to aid other Federal agencies in complying with the provisions of the CBRA (16 U.S.C. 3501 et seq.). For additional information on the CBRA consultation process, visit: <https://www.fws.gov/cbra/Consultations.html>. The responsibility for complying with the CBRA and the final decision regarding the expenditure of funds for a particular action or project rests with the Federal funding agency.