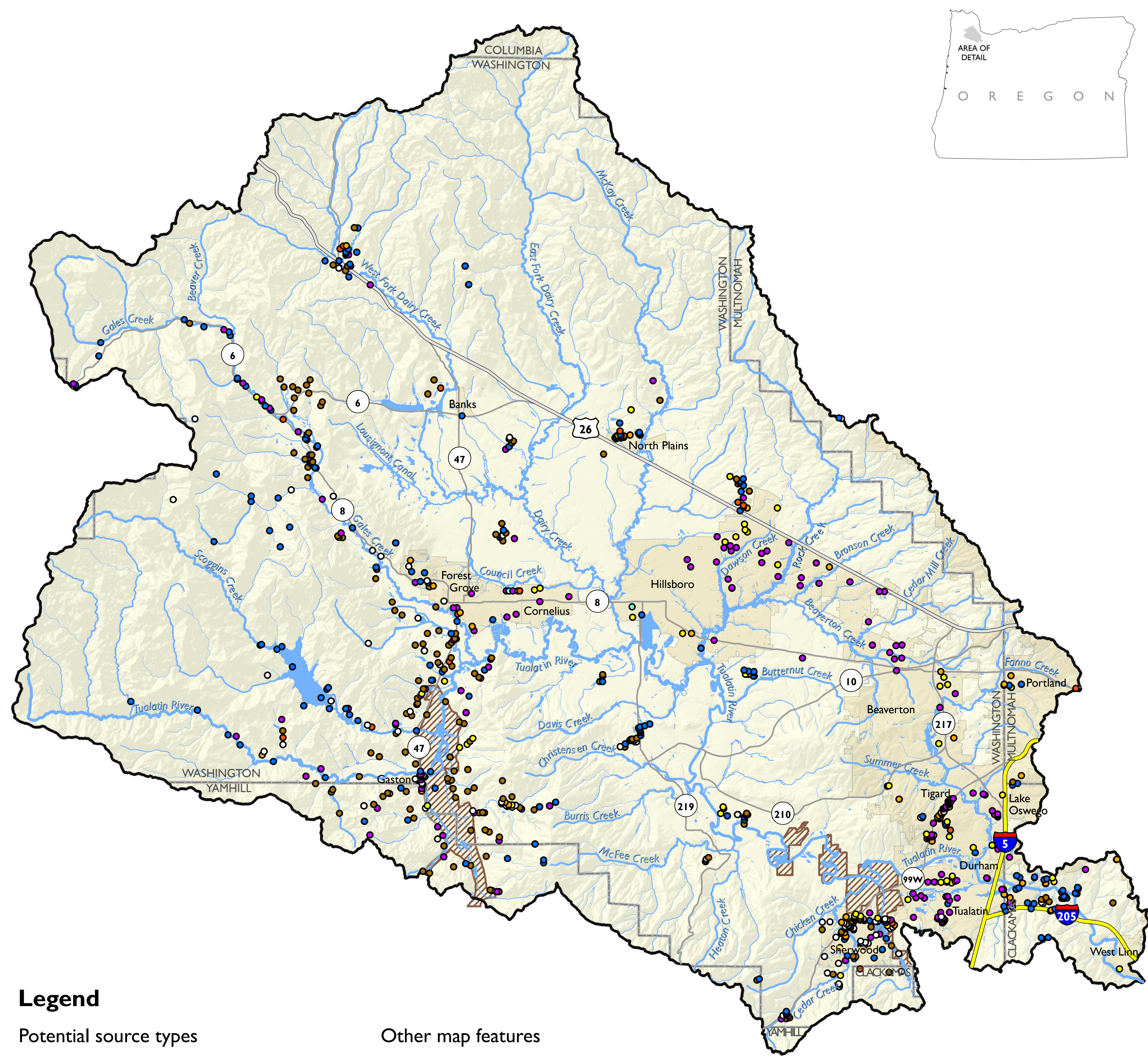


Potential contaminant sources in the Tualatin River watershed

Based on sites and data regulated or monitored by the U.S. Environmental Protection Agency or Oregon Department of Environmental Quality



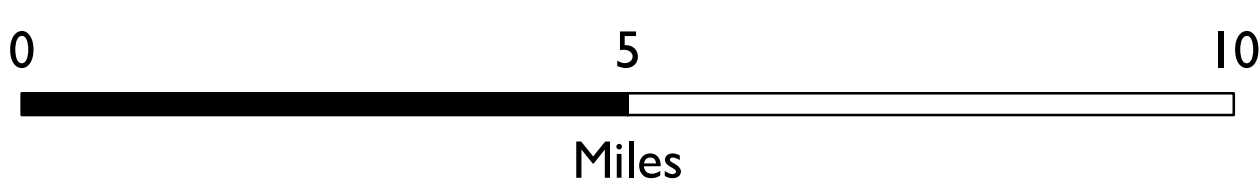
Legend

Potential source types

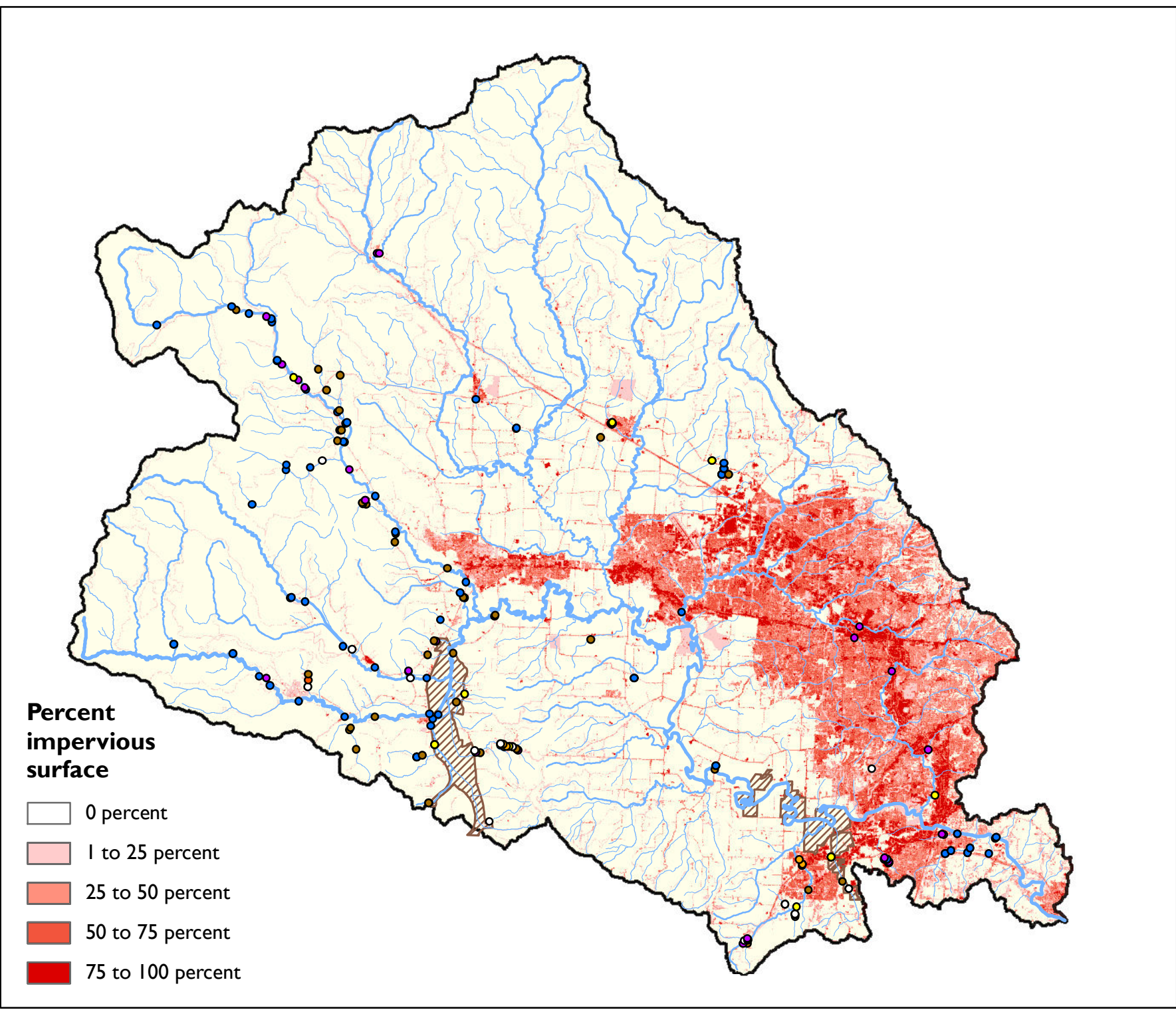
- Agriculture or livestock
- Air pollutant release
- Chemical processing or storage
- High density housing or commercial
- Landfill or junkyard
- Manufacturing or mechanical maintenance
- Sewage or stormwater
- Other toxic release

Other map features

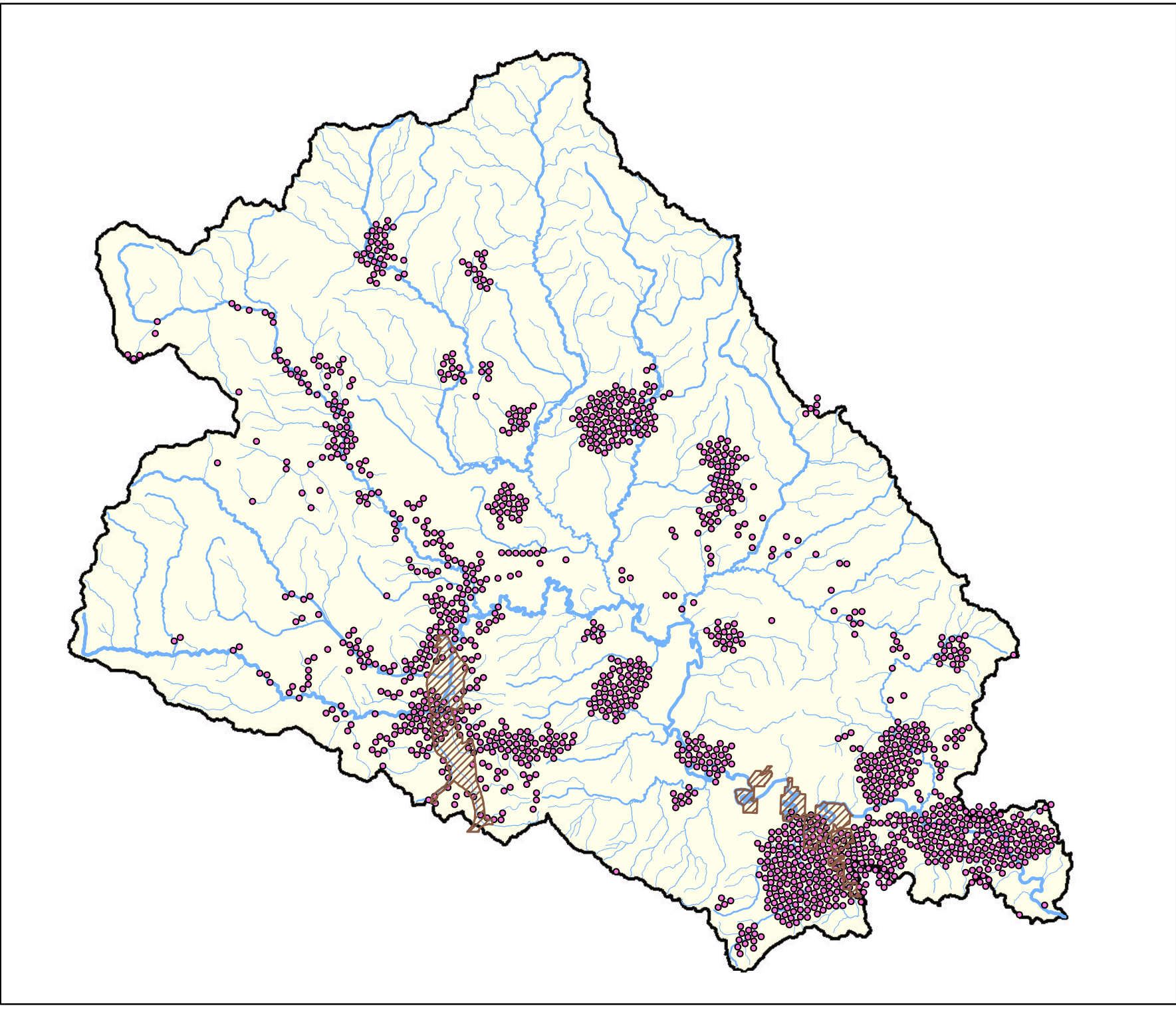
- Stream
- Tualatin River NWR
- Interstate highway
- U.S. highway
- State highway
- City or town
- County boundary



Water quality limited streams in orange, and water quality limited streams where a total maximum daily load (TMDL) is needed in red.



Potential contaminant source points within 100 meters of a stream, superimposed on impervious surface percentage of land.



All potential contaminant source point positions expanded a minimum distance to eliminate overlap.



Daniel Uthman
Pacific Region
ES GIS
November 16, 2011
FY12.ES.004

Data sources: U.S. Environmental Protection Agency Geospatial Data Download Service (data points), Oregon Department of Environmental Quality (data points and stream quality), Pacific States Marine Fisheries Service Streamnet Mixed Scale Routed Hydrography (streams), Oregon Metro Regional Land Information System (lakes and wetlands, county, city, and town boundaries), USDA Natural Resources Conservation Service (HUC boundaries), U.S. Fish and Wildlife Service National Wildlife Refuge System (refuge boundaries), ESRI (state boundary), National Land Cover Database (percent impervious surface), U.S. Geological Survey (National Elevation Dataset).

Disclaimer: Areas, points, and boundaries are provided for reference only and have no political significance.