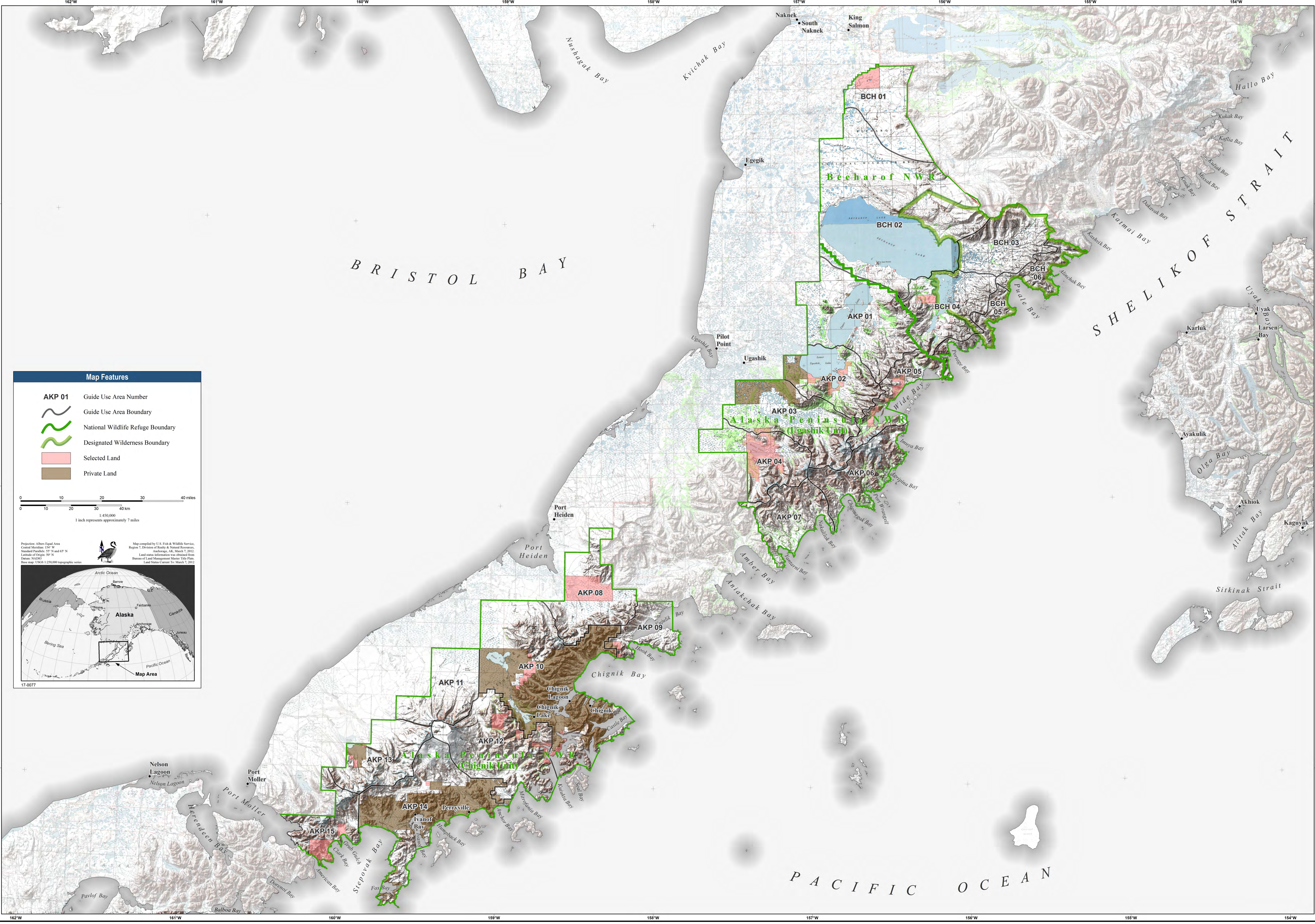




Alaska Peninsula and Becharof National Wildlife Refuges Alaska



Map Features

- AKP 01 Guide Use Area Number
- Guide Use Area Boundary
- National Wildlife Refuge Boundary
- Designated Wilderness Boundary
- Selected Land
- Private Land

0 10 20 30 40 miles
0 10 20 30 40 km
1:450,000
1 inch represents approximately 7 miles

Projection: Albers Equal Area
Central Meridian: 154° W
Standard Parallels: 55° N and 65° N
Latitude of Origin: 59° N
Datum: NAD83
Note: map: 1:450,000 topographic series

Map compiled by U.S. Fish & Wildlife Service,
Region 7, Division of Realty & Natural Resources,
Anchorage, AK, March 7, 2012.
Land ownership information was obtained from:
Bureau of Land Management Maps: Title Plans
Land Status Current To: March 7, 2012.

17-0077

162°W 161°W 160°W 159°W 158°W 157°W 156°W 155°W 154°W