

Tishomingo

National Wildlife Refuge General Brochure

Welcome

Tishomingo National Wildlife Refuge (NWR) is one of more than 560 National Wildlife Refuges that form a network of United States lands and waters managed specifically for wildlife. Refuges provide habitat—food, water, cover, and space—for millions of migratory birds, over 380 threatened or endangered species, and thousands of species of native plants and animals.

Tishomingo NWR was established in 1946 as an administrative overlay of Corps of Engineers lands on a portion of the Washita Arm of Lake Texoma. The primary purpose of the refuge is to protect and manage 16,464 acres of habitat as refuge and breeding grounds for migratory birds and other wildlife. The refuge also provides compatible, wildlife-dependent recreational activities including wildlife observation and photography, fishing, hunting, environmental education, and interpretive programs for the public.

Habitats within Tishomingo NWR include 2,050 acres of wetlands, 10,000 acres of uplands, and 250 acres of croplands. These lands and waters are actively managed to support more than 284 species of birds, 41 species of mammals, 66 species of amphibians and reptiles, 67 species of butterflies, and 54 species of fish.

Wildlife Management Unit

The west side of the refuge also includes the Wildlife Management Unit (WMU) which is accessible from HWY 377. This 3,100 acre area is cooperatively managed with Oklahoma Department of Wildlife Conservation (ODWC). Additional information regarding activities allowed within the WMU are located at the north entrance kiosk.

Public Access Areas

Public Access Areas include Pavilion Picnic Area, Sandy Creek, Murray 23, Nida Point, Rock Creek, Bell Creek and the Wildlife Management Unit (WMU). Restrooms can be found at the Pavilion and the north entrance of the WMU. Please help us keep these areas clean by taking all of your trash with you when you leave.

Hiking Trails

Craven Nature Trail: 3/4 mile loop featuring a 1/4 mile paved path to an observation deck at Dick's Pond

Prairie Pathways Trail: 1/2 mile roundtrip (Accessible)

Sandy Creek Trail: 1/2 mile out and back

Camping

Camping is allowed year-round at the Headquarters Camping Area and at designated campsites in the Wildlife Management Unit. The Headquarters Camping Area has one accessible site plus five additional sites. The WMU has seven designated primitive campsites - see map on the backside of the sheet for locations. Camping is limited to seven nights per visit.

Recreational Opportunities

The refuge offers a variety of recreational opportunities including hiking trails, wildlife observation and photography, and roads for walking and biking. There is creek and lake access for fishing, boating, and paddle sports. Seasonal hunting of large and small game animals is also allowed (by permit). Facilities and access points are indicated on the map on the other side of this sheet.

Permitted Activities

Acceptable year-round activities include wildlife viewing, photography, hiking, bicycling, and fishing (in accordance with State and Refuge regulations). Boating is allowed Mar. 1–Sept. 30. Fires are permitted only in designated areas. Hunting within the WMU is allowed in accordance with Oklahoma state regulations. All refuge controlled hunts require selection by ODWC for available permits. Hunters may apply for permits at <https://www.wildlifedepartment.com>. Additional hunting information is located at the north entrance kiosk.

Prohibited Activities on the Refuge and WMU

- Swimming
- Fireworks
- Littering
- Metal Detectors
- Off-road Driving
- Glass Containers
- ATV's
- Horses
- Ground Fires
- Pets off Leash

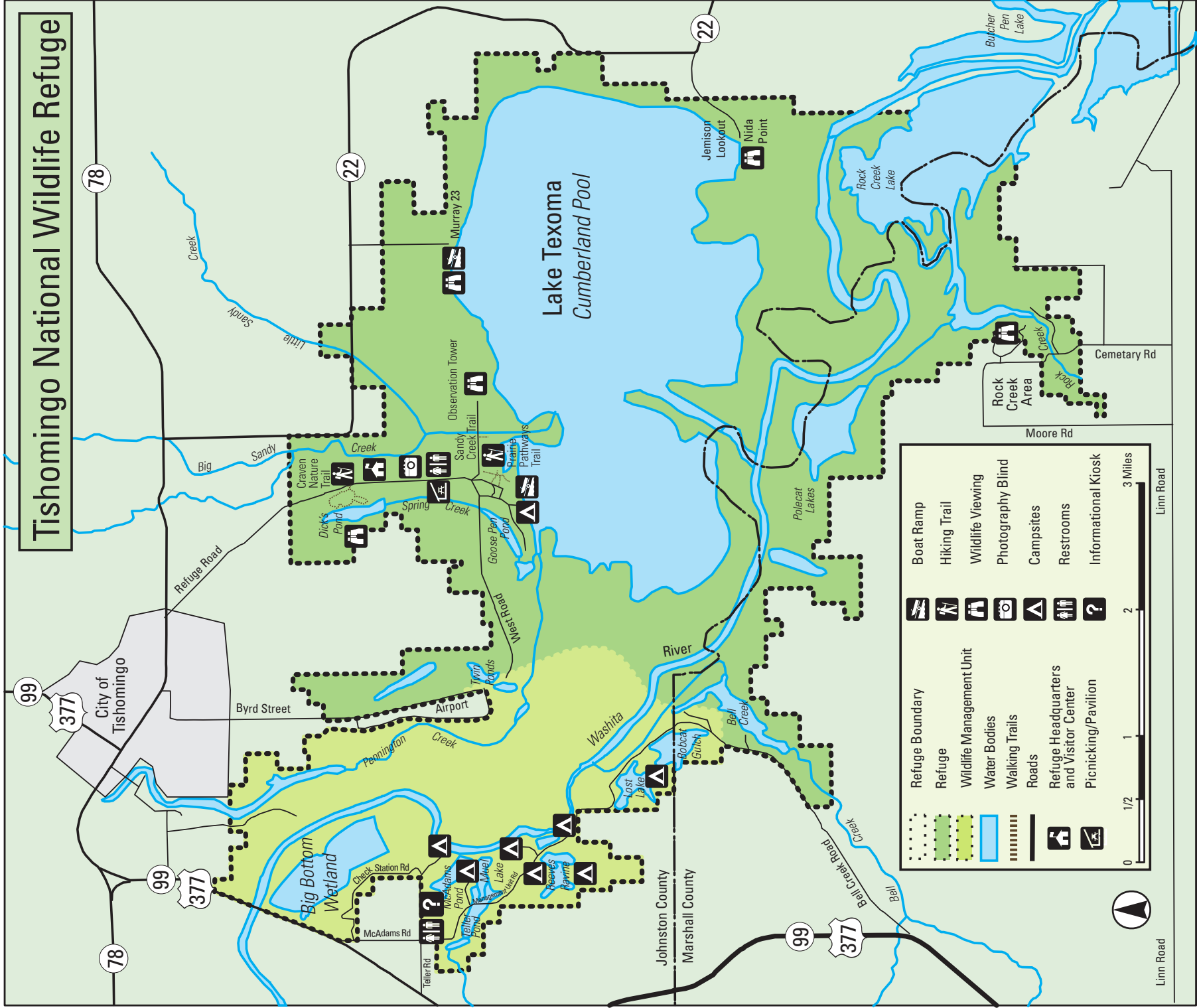
Tishomingo National Wildlife Refuge
11766 S Refuge Road
Tishomingo, OK 73460

580/371-2402

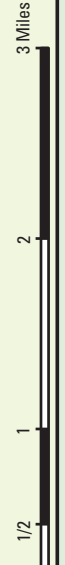
www.fws.gov/refuge/Tishomingo/



Tishomingo National Wildlife Refuge



	Refuge Boundary		Boat Ramp
	Refuge		Hiking Trail
	Wildlife Management Unit		Wildlife Viewing
	Water Bodies		Photography Blind
	Walking Trails		Campsites
	Roads		Restrooms
	Refuge Headquarters and Visitor Center		Informational Kiosk
	Picnicking/Pavilion		



Linn Road

Linn Road

This is a unit of the National Wildlife Refuge System, a network of lands and waters managed for the benefit of wildlife and people.

