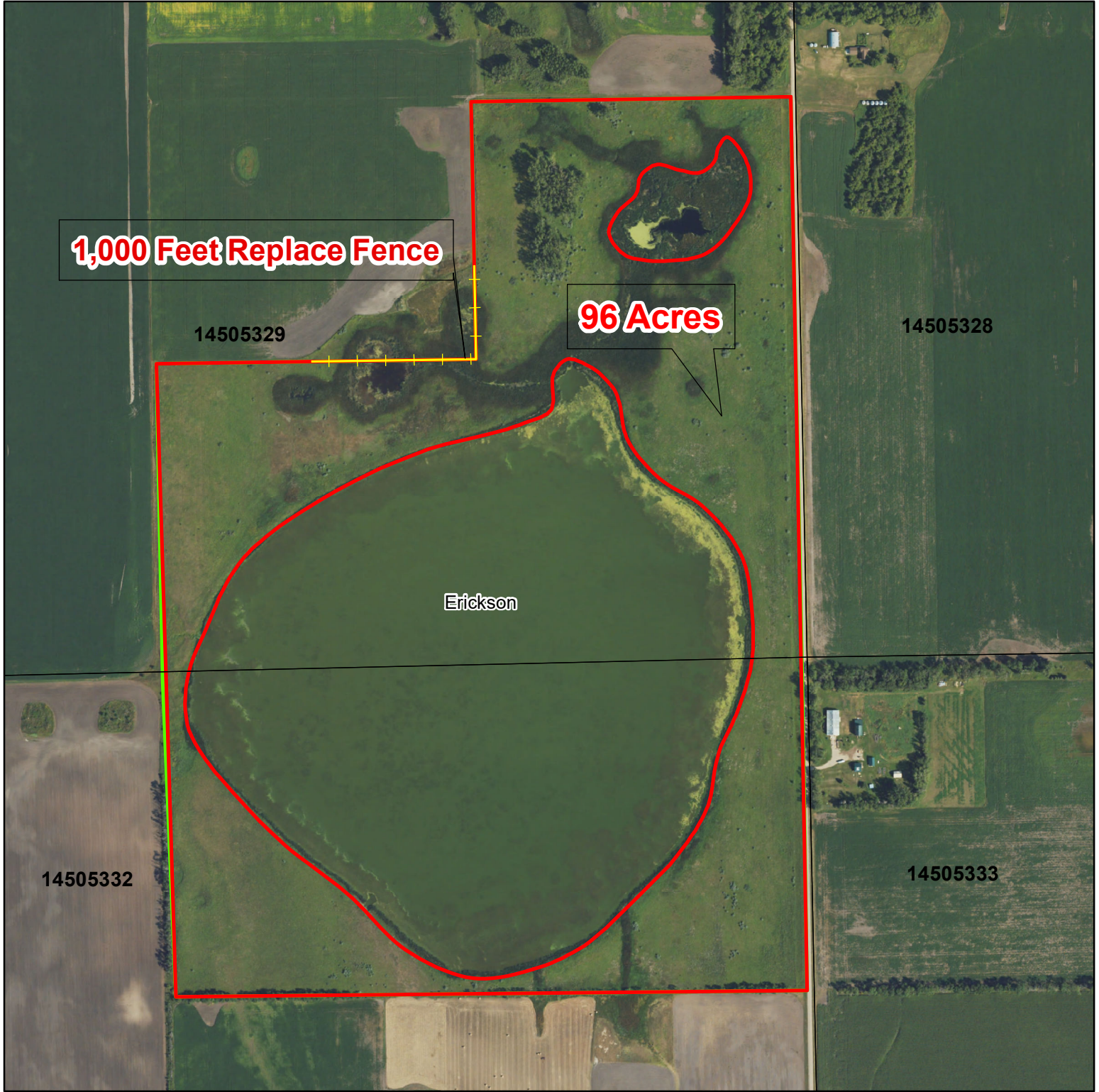


## Grazing Erickson WPA Trail County



**T145N. R53W. Sec 29 & 32**

Legend	
	Cooperator Fence Replacement
	Grazing Cell

The USFWS makes no claim as to the accuracy or completeness of the displayed information. Outlined areas depicting USFWS lands are for illustrative purposes only and do not represent legal boundaries. The map scale bar is specific to the actual size of the displayed area and will vary within the county. For more detailed information, please contact your local Realty office.

This map was produced by the Valley City WMD, 2019.



2022 SID