



# Billy Frank Jr. Nisqually

## National Wildlife Refuge Hunting Regulations 2023–2024



### Firearms

Persons possessing, transporting, or carrying firearms on National Wildlife Refuge System lands must comply with all provisions of State and local law. Persons may only use (discharge) firearms in accordance with refuge regulations (50 CFR 27.42 and specific refuge regulations in 50 CFR Part 32.)

### Accessibility Information

Equal opportunity to participate in and benefit from programs and activities of the U.S. Fish and Wildlife Service is available to all individuals regardless of physical or mental ability. For more information please contact the U.S. Department of the Interior, Office of Equal Opportunity, <https://www.doi.gov/pmb/eo/public-civil-rights>.

### Hunting and Fishing Regulations

Hunting and fishing regulations are designed to provide safe recreational opportunities through wise use of renewable wildlife resources. Hunting and fishing are permitted in accordance with Federal regulations governing public use on National Wildlife Refuges as set forth in Title 50 of the Code of Federal Regulations.

Hunting and fishing will be in accordance with applicable State of Washington regulations subject to the conditions stated below. Brochures may be obtained by mail, at the refuge headquarters, or from the refuge website.

Shot must be U.S. Fish and Wildlife Service approved non-toxic shot. There is a 25 shell limit. Check Washington State Regulations for current year information. Call the Washington State Department of Fish and Wildlife at (360) 902-2200 or the Refuge at (360) 753-9467 for complete information on hunting regulations.

### Access

Federal Lands – The U.S. Fish and Wildlife Service owns and manages about 3000 acres of the Nisqually Delta as Billy Frank Jr. Nisqually National Wildlife Refuge. 530 acres of the Refuge are open to waterfowl hunting.

State Lands – The Washington Department of Fish and Wildlife owns and manages three parcels (625 acres) of land within the approved Refuge boundary which are open to waterfowl hunting.

Access for fishing and hunting is by boat only. Luhr’s Landing is the closest boat ramp to the Nisqually Delta. Walk-in access from refuge trails is not permitted.

The Research Natural Area and Sanctuary Area are not open to public hunting and fishing. Watch for “No Hunting” or “Area Closed” signs.

Hunt Times: Official hunting hours are scheduled by the state of Washington and change daily. Refer to Washington Department of Fish and Wildlife regulations for specific times (WAC 220-416-050).

### Retrieving Birds

Hunters may not enter closed areas to retrieve dead or crippled birds. Allow enough room between the closed boundary and where you are hunting to retrieve birds.

### Welcome

Billy Frank Jr. Nisqually National Wildlife Refuge was established in 1974 to protect the Nisqually estuary from development and provide vital estuarine habitat for fish and wildlife. A diversity of wetland habitats host migratory and overwintering waterfowl for wildlife-dependent activities.

Activity	Season Dates
Geese	Oct. 14-26, 2023 Nov. 4, 2023-Jan. 28, 2024
Ducks	Oct. 14-22, 2023 Oct. 25, 2022-Jan. 28, 2024
Scaup	Nov. 4, 2023-Jan. 28, 2024
Youth	Feb. 3, 2024
Active Military & Veterans	Feb. 3, 2024

**Harlequin Duck is CLOSED to harvest statewide.**

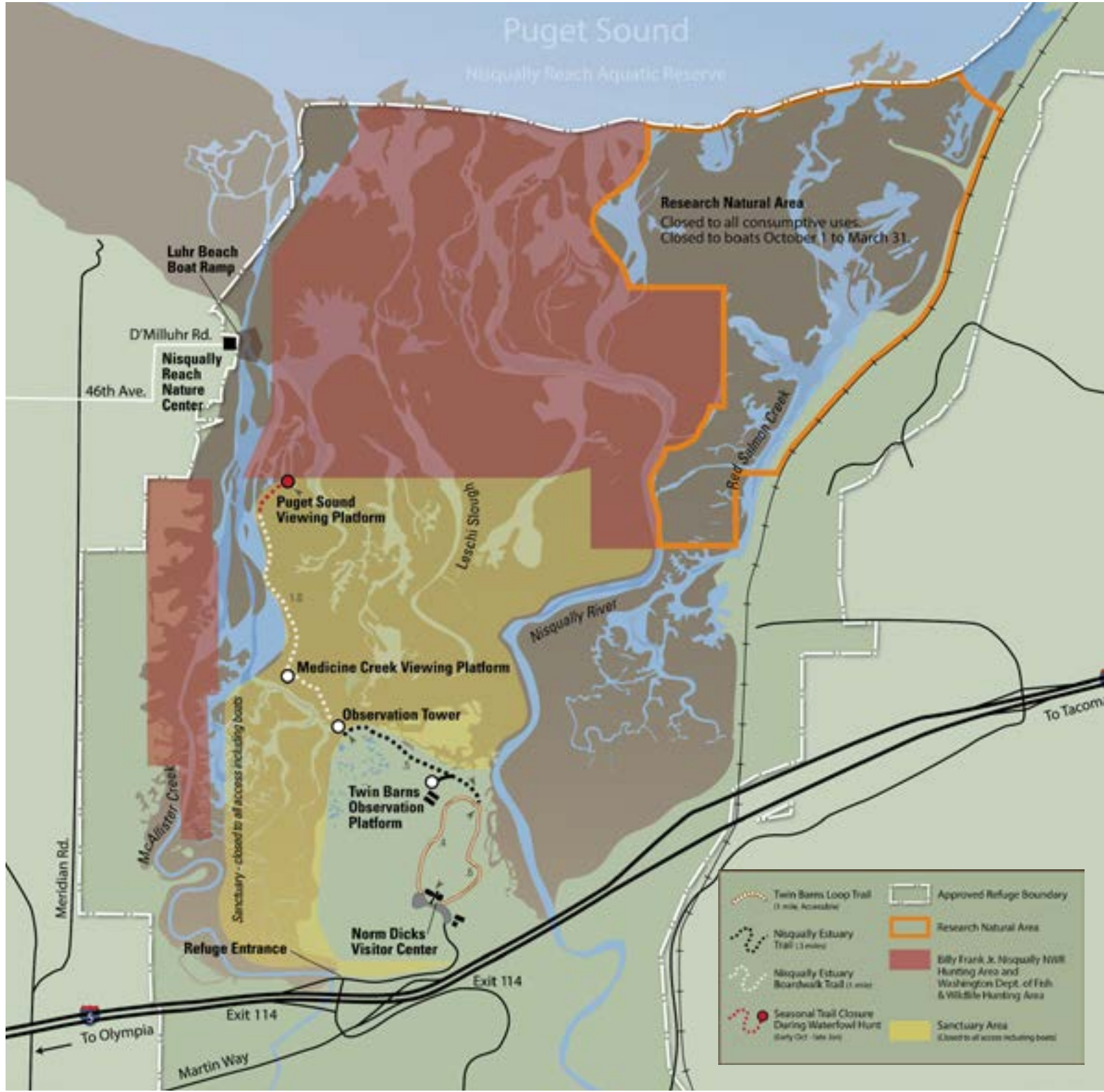
**Nisqually National Wildlife Refuge Complex**  
100 Brown Farm Road  
Olympia, WA 98516  
360/753 9467  
[http://www.fws.gov/refuge/billy\\_frank\\_jr\\_nisqually](http://www.fws.gov/refuge/billy_frank_jr_nisqually)

**U.S. Fish and Wildlife Service**  
<http://www.fws.gov>  
1 800/344 WILD

August 2023



This is a unit of the National Wildlife Refuge System, a network of lands and waters managed for the benefit of wildlife and people.



## Signs and Boundaries

The following signs are in place to help you understand Refuge boundaries as well as activities that are allowed and not allowed in certain areas of the Refuge.

**National Wildlife Refuge Boundary**  
 These signs let you know you are entering a National Wildlife Refuge.

**Area Beyond This Sign Closed**  
 This area is closed to all entry. No hunting or boating is permitted. No roads or trails are open to the public.

**No Hunting Zone**  
 These signs are used to inform the public that no hunting is allowed beyond these signs.

**Research Natural Area**  
 Area behind these signs are closed to all access Oct. 1–March 31. The RNA is closed year round to all consumptive uses, including hunting, fishing, and shellfishing.