

# News Release



Department of the Interior  
U.S. Fish & Wildlife Service  
Baskett Slough National Wildlife Refuge  
10995 Hwy. 22  
Dallas, OR 97338  
Phone: 503-623-2749  
[https://www.fws.gov/refuge/baskett\\_slough/](https://www.fws.gov/refuge/baskett_slough/)

---

**Date :** July 24, 2023

**Contact:** Graham Evans-Peters, Refuge Manager

## Baskett Slough Refuge 2023 Youth Waterfowl Hunt

Baskett Slough National Wildlife Refuge will offer its 6th annual youth waterfowl hunt in 2023, consistent with the Statewide Season, on Saturday, September 30th and Sunday October 1. The hunt is by reservation only and is for youth age 17 and younger. A total of 5 blinds will be available each day and will be assigned by a random drawing. A maximum of 4 people may occupy a blind; only two hunting youth may occupy the same blind, and must be accompanied by at least 1 non-hunting adult 21 years of age or older. All hunting must take place within the assigned blind.

In order to hunt the Refuge you must be awarded a Refuge youth waterfowl hunt permit *in addition to* all current State and Federal hunting requirements for your age. Hunting is permitted in accordance with all applicable State (<https://www.dfw.state.or.us/resources/hunting/waterfowl>) and specific Refuge regulations ([https://www.fws.gov/refuge/baskett\\_slough/](https://www.fws.gov/refuge/baskett_slough/)). To obtain a Refuge youth waterfowl hunt permit, fill out an application (available on our website) and submit it by September 1, 2023. All applicants will be notified by September 8<sup>th</sup> and successful applicants will receive additional information about Refuge regulations, hunting information, and blind selection.

All successfully drawn participants must check in at the Hunt Check Station located at the Baskett Slough Refuge Headquarters to obtain a Refuge youth waterfowl hunt permit that you must possess and carry. Hunters will also select specific blind locations based on their selection number. Hunting ends at 12:00 pm each day and participants must be checked out no later than 1:00 pm. Check-in and blind selection will be held 1-½ hours before legal shooting time. Hunters may take ducks (including scaup), mergansers, coots and geese at the established bag limits. Overnight camping and after hours parking are prohibited on the Refuge. Persons possessing, transporting, or carrying firearms on National Wildlife Refuges must comply with all provisions of State and local law. Persons may only use (discharge) firearms in accordance with Refuge regulations.

**For more information, application, regulations, details on how to apply, and maps with check station, blind, and parking locations, visit the Refuge website: [https://www.fws.gov/refuge/baskett\\_slough/](https://www.fws.gov/refuge/baskett_slough/)**

*The mission of the U.S. Fish and Wildlife Service is working with others to conserve, protect and enhance fish, wildlife, plants and their habitats for the continuing benefit of the American people. We are both a leader and trusted partner in fish and wildlife conservation, known for our scientific excellence, stewardship of lands and natural resources, dedicated professionals and commitment to public service. For more information on our work and the people who make it happen, visit [www.fws.gov](http://www.fws.gov) --FWS--*

# Baskett Slough National Wildlife Refuge

## Hunting Regulations – Youth Waterfowl Hunt Opportunity



Hunting is permitted in accordance with all applicable State (see website below) and special Refuge regulations.

State of Oregon: [www.dfw.state.or.us/resources/hunting/waterfowl](http://www.dfw.state.or.us/resources/hunting/waterfowl)

**Baskett Slough National Wildlife Refuge:**  
[https://www.fws.gov/refuge/baskett\\_slough/](https://www.fws.gov/refuge/baskett_slough/)

**Youth 11 and under:** must have either a free youth license to hunt game birds or a youth license; and a Migratory Game Bird HIP validation

**Youth 17 and under:** must have Hunter Education Certificate or a hunting license displaying their Hunter Education Certification number

**Youth 12-15:** must have youth license, Migratory Game Bird HIP validation, and youth state waterfowl validation

**Youth 16-17:** must have youth license, Migratory Game Bird HIP validation, youth state waterfowl validation, and Federal Duck Stamp

- **Open to Hunting:** Ducks (including scaup), mergansers, coots and geese at the established bag limits.
- **Closed to Hunting:** All other species of wildlife not listed are protected.
- **Days Open to Waterfowl Hunting:** September 30<sup>th</sup> and October 1st, 2023.
- **Limited General Public Entry during the Youth Hunt:** General public entry will be limited to the Rich Guadagno Memorial Trail until noon. After 12 pm the entire Refuge is again open to the public.
- **Vehicle Travel and Parking** - All vehicles are restricted to designated motorized routes of travel and parking areas. Trails lead from the parking areas to the blind sites (see map).
- **Boats** - Non-motorized watercraft (including boats, layout-type vessels, and float tubes) may only be used to set decoys and retrieve downed birds. Watercraft may not be used to access hunting locations.
- **Firearms, Ammunition, and Shell Limits** - Only shotguns are permitted and all shot must be federally approved non-toxic shot.
- **Dogs** - Dogs must be kept on leashes except during the lawful pursuit of game during legal seasons.

**Hunter Application** - Details can be found online at: [https://www.fws.gov/refuge/baskett\\_slough/](https://www.fws.gov/refuge/baskett_slough/)

Applications must be received by September 1, 2023.

### *Hunter Check Station & Procedures:*

**Check-In / Check-Out** - All participants must check-in at the Hunter Check Station located at the Baskett Slough National Wildlife Refuge office (10995 Hwy 22 | Dallas, OR 97338) to obtain a refuge permit that you must possess and carry. Check-in and blind selection is 1-1/2 hours before legal hunt time. You must be checked out no later than 1:00 PM and must complete a harvest report. See map for parking, blind, and check station location.

### *Blind Selection:*

**Blinds** – Blinds will be selected during check-in on the day of the hunt, in order by blind selection number. All hunting must take place within the assigned blind. A maximum of four (4) people may occupy a blind. Only two hunting youth may occupy the same blind, and must be accompanied by at least one (1) non-hunting adult 21 years of age or older.

### *Prohibited Activities:*

- The use or possession of alcoholic beverages while hunting
- Fires
- Littering (including empty shotgun hulls)
- Overnight camping and parking
- Commercial guiding, trapping, or netting
- Use of ATVs and other off-road vehicles

### *Contact Information:*

**Baskett Slough National Wildlife Refuge**  
**Graham Evans-Peters, Refuge Manager**  
**Phone: 541-760-2872**

**[E-mail: willamettevalley@fws.gov](mailto:willamettevalley@fws.gov)**



# United States Department of the Interior

FISH AND WILDLIFE SERVICE  
Willamette Valley National Wildlife Refuge Complex  
Ankeny, Baskett Slough and William L. Finley National Wildlife Refuges  
26208 Finley Refuge Rd. | Corvallis, OR 97333  
[willamettevalley@fws.gov](mailto:willamettevalley@fws.gov)  
Phone: 541-757-7236 Fax: 541-757-4450



**Thank you for applying for the Baskett Slough National Wildlife Refuge Youth Waterfowl Hunt.** Youth age 17 or younger may apply. At the time of the hunt, hunters must be 17 or younger, have successfully completed their hunter education requirements, and have a valid hunting license with the appropriate state waterfowl validation and federal duck stamps (see ODFW game bird regulations for youth specific regulations). You must fill out a separate application for every youth. A single youth may apply for both dates on a single application. All youth must be accompanied by an adult 21 years of age or older. A maximum of two hunting youth will be allowed per hunting blind. At least one non-hunting supervising adult must accompany youth hunters. Additional non-hunters may also occupy the blind with a hunting youth and non-hunting adult supervisor for a maximum occupancy of 4 persons per blind. Applications will be accepted by U.S. Postal Service mail, e-mail, or delivered in person to the Willamette Valley National Wildlife Refuge Headquarters: 26208 Finley Refuge Rd., Corvallis, OR 97333. Applications are not accepted at the Baskett Slough Refuge office due to limited staff. The application must be received no later than September 1st, 2023. Applications that are unreadable or do not follow guidelines will be excluded. Applicants will be notified whether they were successfully drawn or not by September 8<sup>th</sup>, 2023.

**Name of Youth Hunter:**

---

**Name of Parent/Guardian:**

---

**Phone Number:** \_\_\_\_\_

**E-mail Address:** \_\_\_\_\_

**Mailing Address:** \_\_\_\_\_

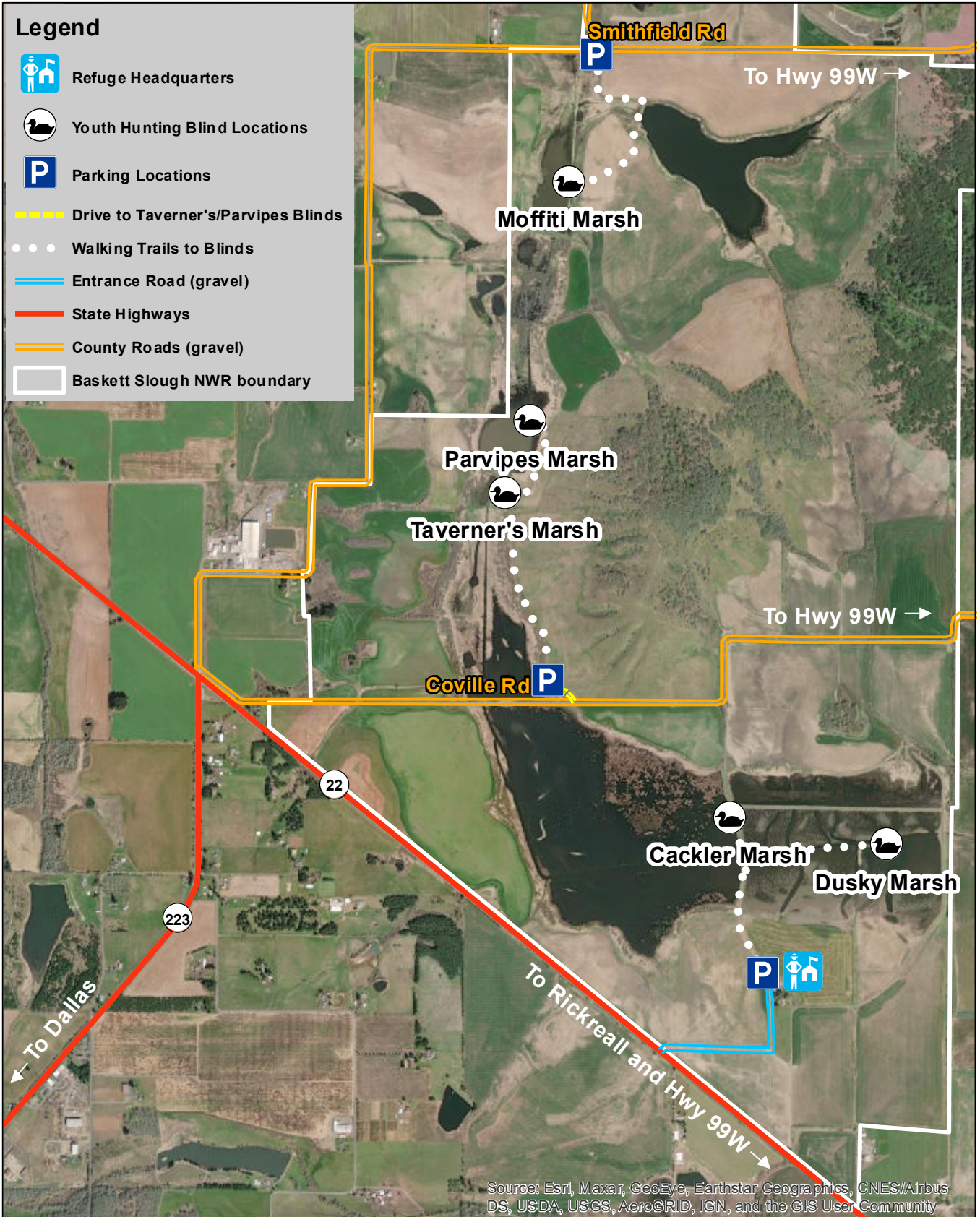
---

**Eighteen decoys (12 mallard, 6 wigeon) and a jerk string decoy will be made available for each blind.**

**Hunt Dates:** *(circle all that apply)*

Saturday, September 30th, 2023

Sunday, October 1st, 2023



**Legend**

- Refuge Headquarters
- Youth Hunting Blind Locations
- Parking Locations
- Drive to Taverner's/Parvipes Blinds
- Walking Trails to Blinds
- Entrance Road (gravel)
- State Highways
- County Roads (gravel)
- Baskett Slough NWR boundary

Source: Esri, Maxar, GeoEye, Earthstar Geographics, CNES/Airbus DS, USDA, USGS, AeroGRID, IGN, and the GIS User Community

