



U.S. Fish and Wildlife Service  
Bureau of Land Management  
National Park Service  
Bureau of Indian Affairs

# Federal Subsistence Board News Release



Forest Service

**For Immediate Release:**  
June 02, 2022

**Contact:** Holly Carroll  
(907) 351-3029  
[holly\\_carroll@fws.gov](mailto:holly_carroll@fws.gov)

## **Federal Waters of the Coastal District and Districts 1&2 of the Yukon River Closed to Subsistence Salmon Fishing**

The Federal In-season Manager, pursuant to delegated authority from the Federal Subsistence Board under Alaska National Interest Lands Conservation Act (ANILCA Title VIII section 816), has issued an emergency special action (**2-KS-01-22**) closing Federal public waters of the Coastal District, (which includes the communities of Scammon Bay, Hooper Bay, and Chevak, as well as the Black River), and District 1, (which includes the communities of Emmonak, Nunam Iqua, Alakanuk, and Kotlik) of the Yukon River to the harvest of Chinook and summer Chum salmon, effective 8 pm, Thursday, June 2 until August 1.

Based on migration run timing, these same closures will occur in District 2, (which includes the communities of Mountain Village, Pitka's Point, St. Mary's, Pilot Station, and Marshall) effective 8 pm, Saturday, June 4, until August 1.

This action is being taken because the 2022 Yukon River Chinook and summer Chum salmon runs are forecasted to be poor with little to no harvestable surplus available for subsistence uses. ANILCA allows for the closure to subsistence uses "to assure the continued viability of a particular fish or wildlife population."

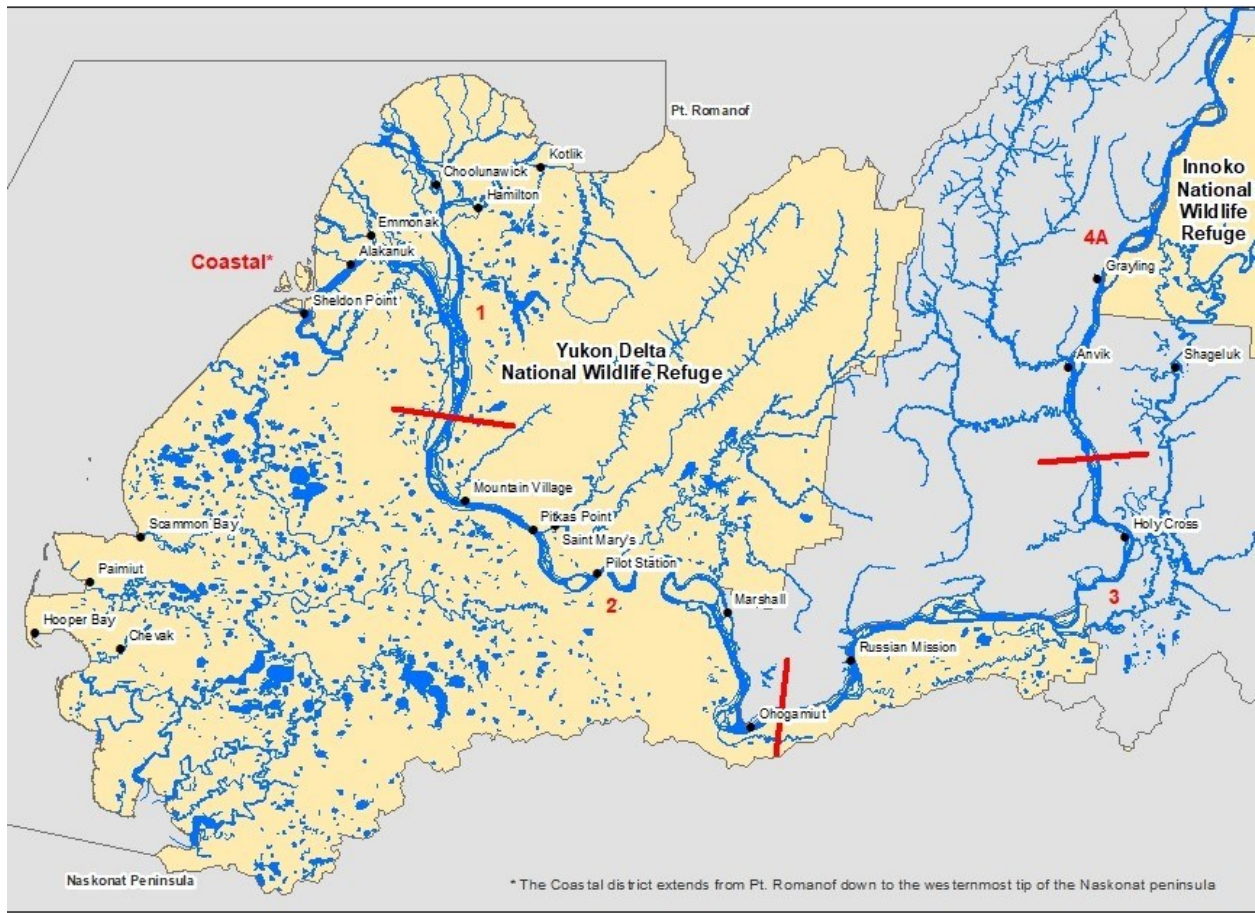
This management action was taken in consultation with The Alaska Department of Fish and Game (ADF&G). ADF&G managers have implemented salmon fishing closures effective for the non-Federal public waters of these areas at the same time. Fishing for non-salmon species with 4-inch or smaller mesh gill nets will be allowed under State and Federal regulations during salmon fishing closures; however, net length will be restricted to a maximum of 60 feet at the start of the season. If a salmon is caught in 4-inch mesh gillnets, it should be released alive if possible, or if dead, may be kept. If fishermen are encountering salmon in a particular area, they should move their net and avoid areas where salmon are running. Other non-salmon gear types, including hook and line, longline, jigging gear, hand line, beach seine, fyke net, spear, or lead may be used to fish for non-salmon species all year, even during salmon fishing closures, but all Chinook and summer Chum salmon caught must be released alive from these gears. Pink Salmon or Sockeye Salmon may be retained in these gears if caught. Fish wheels may not be operated during salmon fishing closures.

For additional information concerning Yukon River Federal Special Actions contact Yukon River Federal Manager Holly Carroll at (907) 351-3029.

For information concerning State management actions, contact Yukon River Summer Season Manager, Deena Jallen in Fairbanks at (907) 459-7274 or in Emmonak at (907) 949-1320.

If you'd like to receive emails and notifications on the Federal Subsistence Management Program you may subscribe for regular updates by emailing [fws-fsb-subsistence-request@lists.fws.gov](mailto:fws-fsb-subsistence-request@lists.fws.gov).

The map below shows Federal public waters (shaded area) of the Yukon Drainage. The Yukon Coastal District is that portion of the Yukon-Northern Area between the Latitude of Point Romanof and the latitude of the westernmost point of the Nasonkat Peninsula, including those waters draining into the Bering Sea. Districts 1, 2 and 3 boundaries are indicated by red number and red bars.



**Yukon River Drainage Area -**  
**Lower River Fishing Districts: Coastal, 1, 2, and 3**

— Fishing Districts  
Federal Public Waters Jurisdiction

###-