

# Harris Neck National Wildlife Refuge

## Hunting Regulations

### Welcome

Managed by the U.S. Fish and Wildlife Service, Harris Neck National Wildlife Refuge was established in 1962 by transfer of federal lands formerly managed by the Federal Aviation Administration as a WWII Army Airfield. The refuge's 2,824 acres consist of saltwater marsh, grassland, mixed deciduous woods, and freshwater impoundments. In combination, these habitats support a diversity of wildlife species and provide important sanctuary and nesting areas for resident and migratory birds.

Harris Neck National Wildlife Refuge  
c/o Savannah Coastal Refuges Complex  
694 Beech Hill Lane, Hardeeville, SC 29927  
843-784-9911, ext. 111 (Office)  
843-226-5738 (Mobile)  
Email: [savannahcoastal@fws.gov](mailto:savannahcoastal@fws.gov)  
Website: [www.fws.gov/refuge/harris-neck](http://www.fws.gov/refuge/harris-neck)  
Facebook: [www.facebook.com/savannahcoastalrefugescomplex](http://www.facebook.com/savannahcoastalrefugescomplex)

The refuge is part of the National Wildlife Refuge System, a national network of lands and waters managed for the benefit of wildlife and people.

<http://www.fws.gov>

1-800-344-WILD

### Accessibility

Equal opportunity to participate in and benefit from programs and activities of the U.S. Fish and Wildlife Service is available to all individuals regardless of physical or mental ability. For more information, please contact the U.S. Department of the Interior, Office of Equal Opportunity, [www.doi.gov/pmb/eo/public-civil-rights](http://www.doi.gov/pmb/eo/public-civil-rights).

## General Information

### Permit Procedures

All hunters, 16 years of age or older, are required to purchase, and carry while hunting, the Savannah Coastal Refuges Complex Annual Hunt Permit. This permit will allow hunters access to all "non-quota" hunts on any of the following National Wildlife Refuges: Blackbeard Island, Harris Neck, Pinckney Island, Savannah, and Wassaw NWRs. Annual Hunt Permits are \$25, non-transferable, and valid for the current hunt season only (August 2022 – May 2023). To purchase a permit, please visit [savannahcoastal.recaccess.com](http://savannahcoastal.recaccess.com). If it is your first time purchasing a permit through RecAccess, you will need to complete the one-time registration process. Once your account is set-up, you can purchase the permit. Please retain your user ID and password for RecAccess for future permit purchases. If you are unable to access the internet, please call the refuge hunt coordinator at (843) 226-5738.

### State Licenses

Hunters are responsible for obtaining the required state license(s). A state WMA permit is not required to hunt the refuge.

### Access

Hunters access the refuge by vehicle through the main entrance gate during designated timeframes (see General Hunting Regulations below). Boat access is prohibited during hunts.

The refuge is closed to the general public on all hunt days.

## **Tree Stands**

Hunters may place one stand on the refuge during the week preceding the hunts. Hunters assume all responsibility for the loss or damage of personal property left on the refuge. Stands must be removed at the end of each hunt.

## **Firearms**

Persons possessing, transporting, or carrying firearms on National Wildlife Refuge System lands must comply with all provisions of State and local law. Persons may only use (discharge) firearms in accordance with refuge regulations (50 CFR 27.42 and specific refuge regulations in 50 CFR Part 32).

## **General Hunting Regulations**

Hunting regulations are designed to provide safe recreational opportunities through wise use of renewable wildlife resources. Hunting is permitted in accordance with Federal regulations governing public use on National Wildlife Refuges as set forth in Title 50 of the Code of Federal Regulations. Hunting will be in accordance with applicable state of Georgia regulations subject to the conditions stated below.

Public hunting at Harris Neck NWR is permitted on approximately 2,500 acres. Certain areas are closed to hunting (see refuge hunt map below). There are two hunts held annually; a 3-day archery hunt and a 1-day firearm hunt for deer. Feral hogs, coyotes, and armadillos may be taken incidentally during these hunts with the appropriate authorized weapons (see table below for dates and methods of take).

Hunters must check in at refuge headquarters **between 5 am and 6 am** the morning of each hunt day. Hunters will be allowed to exit and re-enter the refuge between 9 am and one hour prior to evening stand hours. Entry and exit must be through the entrance gate only. All hunters must be checked out and off the refuge no later than 2 hours after sunset.

Deer harvested during the hunt must be checked by refuge personnel before leaving the refuge. All deer must be tagged with state deer tags. Antlerless deer tags will be issued (free) at the deer check station during designated times.

Youth hunters (age 15 and under) must be supervised by a licensed adult, and must remain within sight and normal voice contact with the adult at all times. An adult may supervise only one youth hunter.

All hunters must wear at least 500 square inches of solid, unbroken fluorescent orange material visible above the waistline during the firearm hunt.

Hunters must be on their stands from one-half hour before legal sunrise until 9 am and from two hours before sunset until one-half hour after legal sunset.

Vehicles are restricted to the designated auto tour route; two-way traffic will be permitted. Entry by boat is prohibited.

For additional regulations, see "Prohibited Activities" section.

**State hunting regulations, seasons, methods of take, bag limits, and license/tag requirements apply to all hunting on the refuge, unless stated otherwise in the table below:**

Hunt Type	Season Dates	Method of Take	Bag Limit	Hunt Area	Other Regulations
Deer Feral Hog Coyote Armadillo (Archery)	September 22, 23 & 24, 2022	State authorized bow	5 deer (no more than 2 antlered) – State bonus tags will be issued for two.	See hunt map	Refuge hunt permit required for all hunters ages 16 and older.  State regulations apply.
Deer Feral Hog Coyote Armadillo (Firearm)	November 18, 2022	State authorized shotgun, muzzleloader, bow, air bows, air rifles (.30 caliber or larger)	5 deer (no more than 2 antlered) – State bonus tags will be issued for two.	See hunt map	Refuge hunt permit required for all hunters ages 16 and older.  State regulations apply.

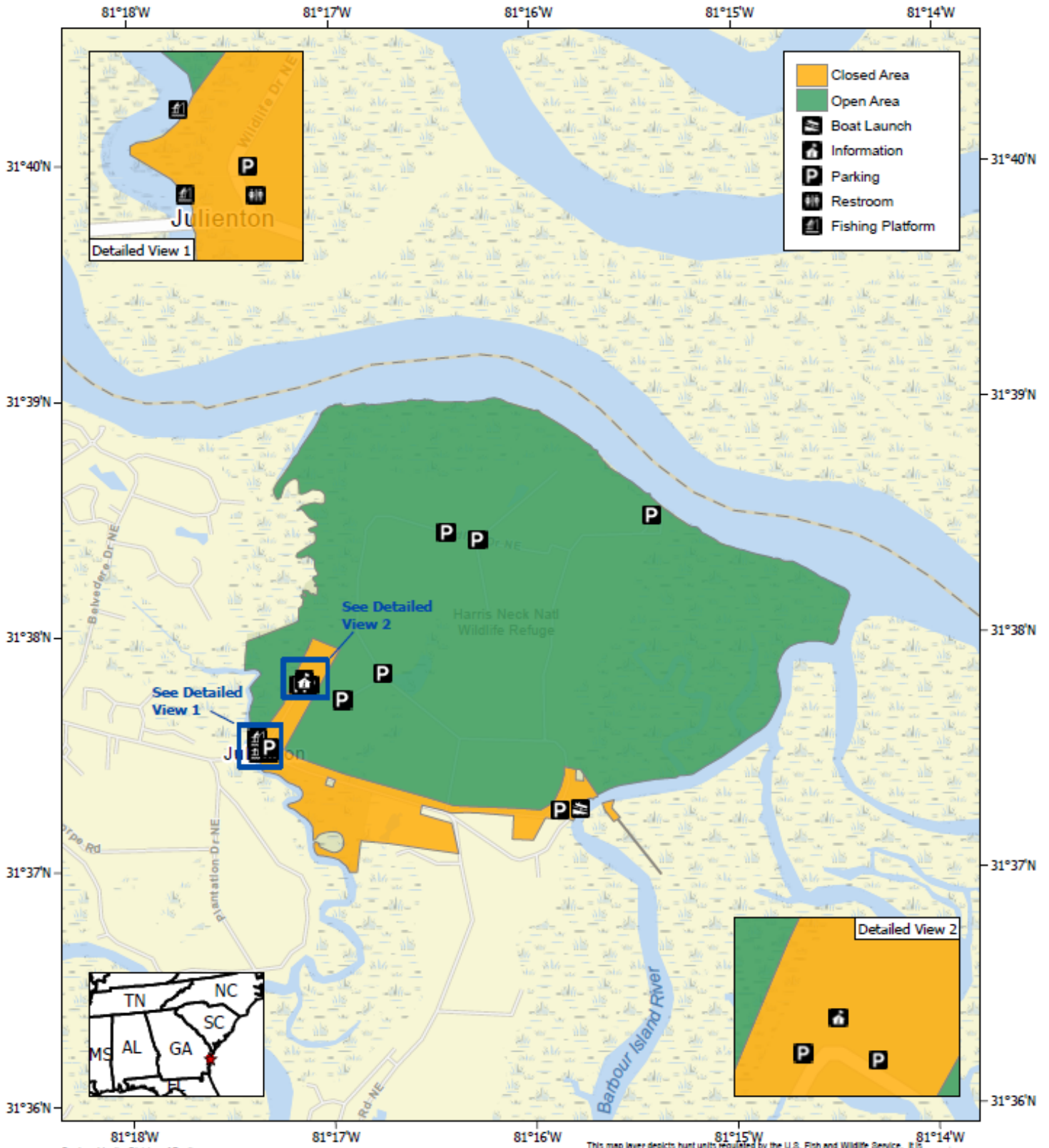
**Prohibited Activities**

- Hunting closer than 100 yards of Harris Neck Road, the refuge entrance drive, refuge headquarters, Barbour River Landing, Barbour River Landing Road and Gould’s Cemetery.
- Camping and fires
- Possession or use of poison or poison pods
- Distribution of bait, and hunting over bait
- Participating in “man drives” for deer
- Trapping
- Harming, harassing, or killing any other wildlife than game species being hunted
- Hunting from a tree in which a metal object has been screwed or driven to support a hunter
- Pruning/limbing of live trees
- Use of trail or game cameras
- Use of flagging, blazing, painting, or trail marking devices for locating stands or for any other purpose
- Use of dogs for hunting
- Target practice
- Possession of alcoholic beverages while hunting

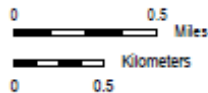
**FOR QUESTIONS, PLEASE CALL HUNT COORDINATOR AMY OCHOA AT 843-226-5738.**

*Revised July 2022*

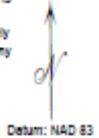
# HARRIS NECK NWR HUNT MAP



Produced by the Division of Realty  
 Atlanta, GA  
 Produced: 11/10/2020  
 Basemap: ESRI Streets  
 File: Harris Neck Hunt map.aprx



This map layer depicts hunt units regulated by the U.S. Fish and Wildlife Service. It is intended for informational purposes only and does not constitute a legal survey. Ownership of land, whether public or private, may change at any time. You are solely responsible for confirming the accuracy of all information before taking or omitting any action. Always obey property line postings and use common sense when verifying boundaries. Public and private land boundaries may not be marked. Hunting on a station is subject to Federal and State regulations. Consult all current Federal and State regulations prior to hunting. Station specific regulations may exist. Users should always consult the station's website or check with the appropriate local official with any concerns regarding the information displayed.



Map Image is the Intellectual property of Esri and is used herein under license.  
 Copyright © 2019 Esri and its licensors. All rights reserved.