

Southwest Florida Road Hot Spots



November 15, 2017

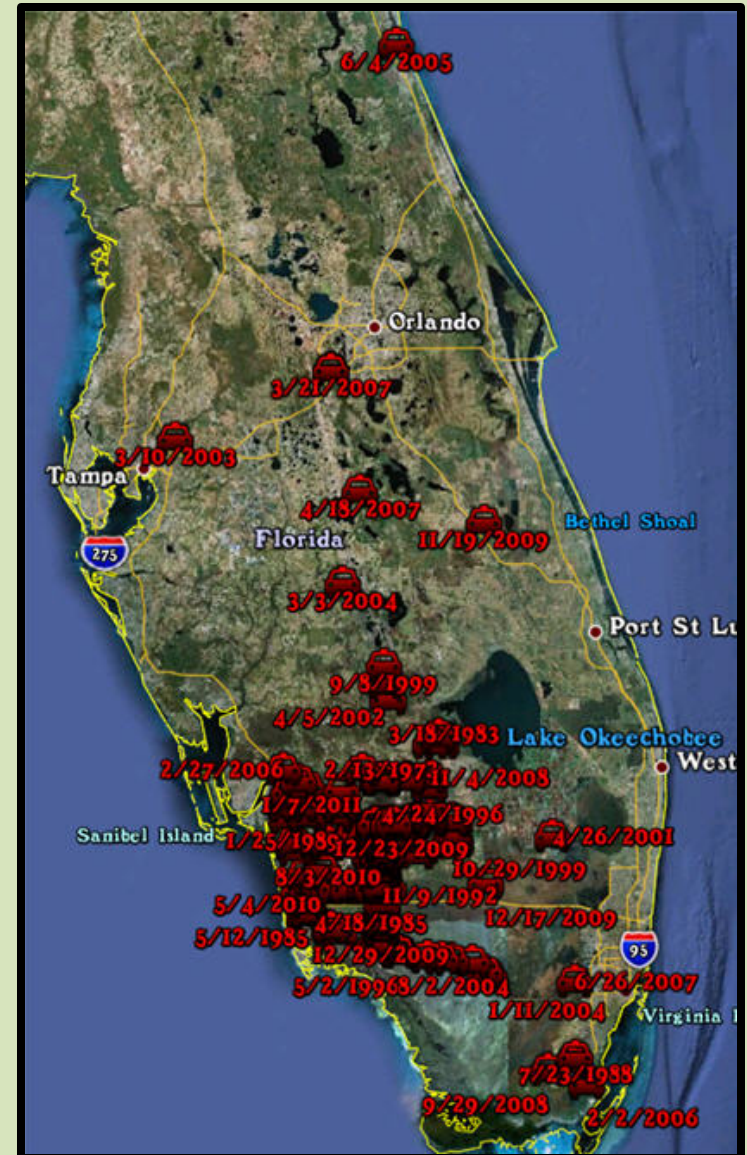
Panther Recovery Implementation Team: Transportation SubTeam

- Core Team Liaison: Elizabeth Fleming, Defenders of Wildlife
- SubTeam Chair: Nancy Payton, Florida Wildlife Federation
- Katasha Cornwell: Florida Department of Transportation
- Amber Crooks, Conservancy of Southwest Florida
- Terry Gilbert, Florida Fish and Wildlife Conservation Commission
- Darrell Land, Florida Fish and Wildlife Conservation Commission
- Gwen Pipkin, Florida Department of Transportation
- Don Scott, Lee County Metropolitan Planning Organization
- Brent Setchell, Florida Department of Transportation
- Dan Smith, University of Central Florida
- John Wrublik, US Fish and Wildlife Service

Mission

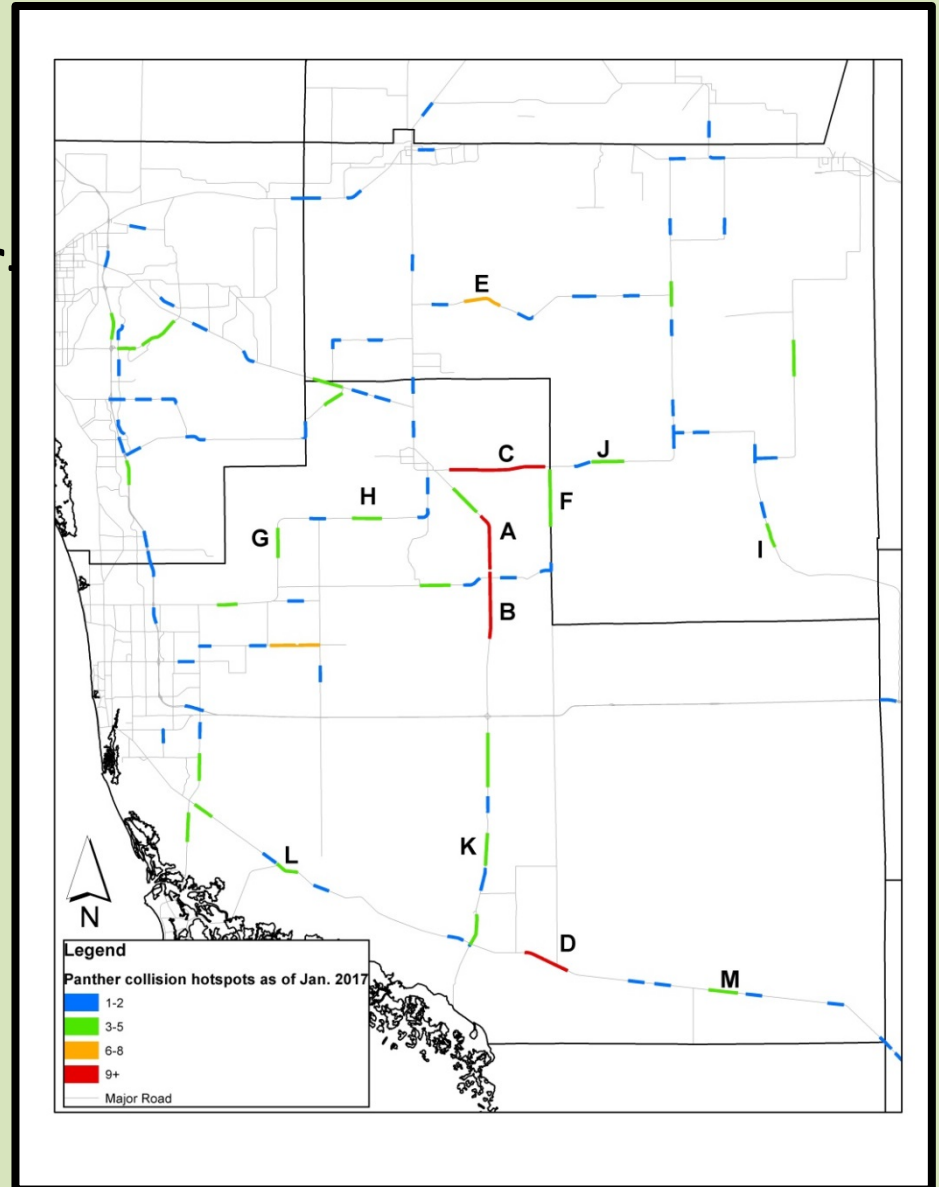
To identify and prioritize high panther-vehicle collision areas and recommend risk-reduction measures.

- South Florida
- Central Florida
- Statewide



Southwest Florida Hotspots

- Mapping shows hotspots based on documented panther vehicle collisions (as of December 31, 2016) only.
- Southwest Florida only.
- Does not predict potential future hotspots.



Methodology

- Utilizing ARC GIS to identify “hot spot” segments based on panther-vehicle collision data.
- To create hot spot segments, buffered roads, created buffer around each panther-vehicle collision spot (deaths and injuries), and then clipped the portion of the road to do a count.



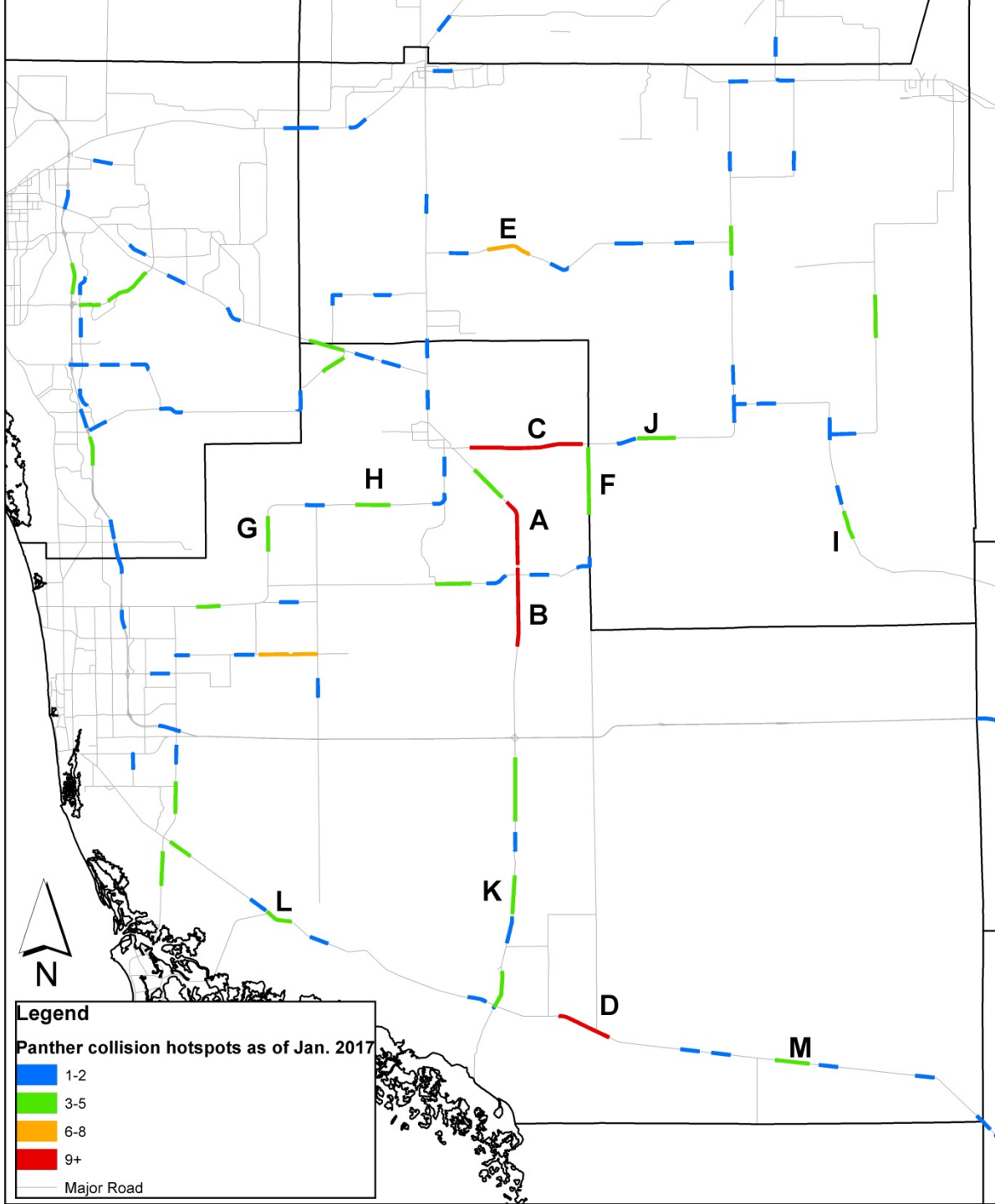
Hot Spot categories: **Red** 9+ collisions, **Orange** 6-8 collisions, **Green** 3-5 collisions, **Blue** 1-2 collisions

Methodology

- This will be a living document and amended with additional data.
- New data may elevate the severity of a segment(s).
- Some roads with existing crossings continue to be hot spots.
- Did not include rank for segments where existing improvements have effectively alleviated the hotspots or where alternative remedies have been identified.



©Thomas Trotta

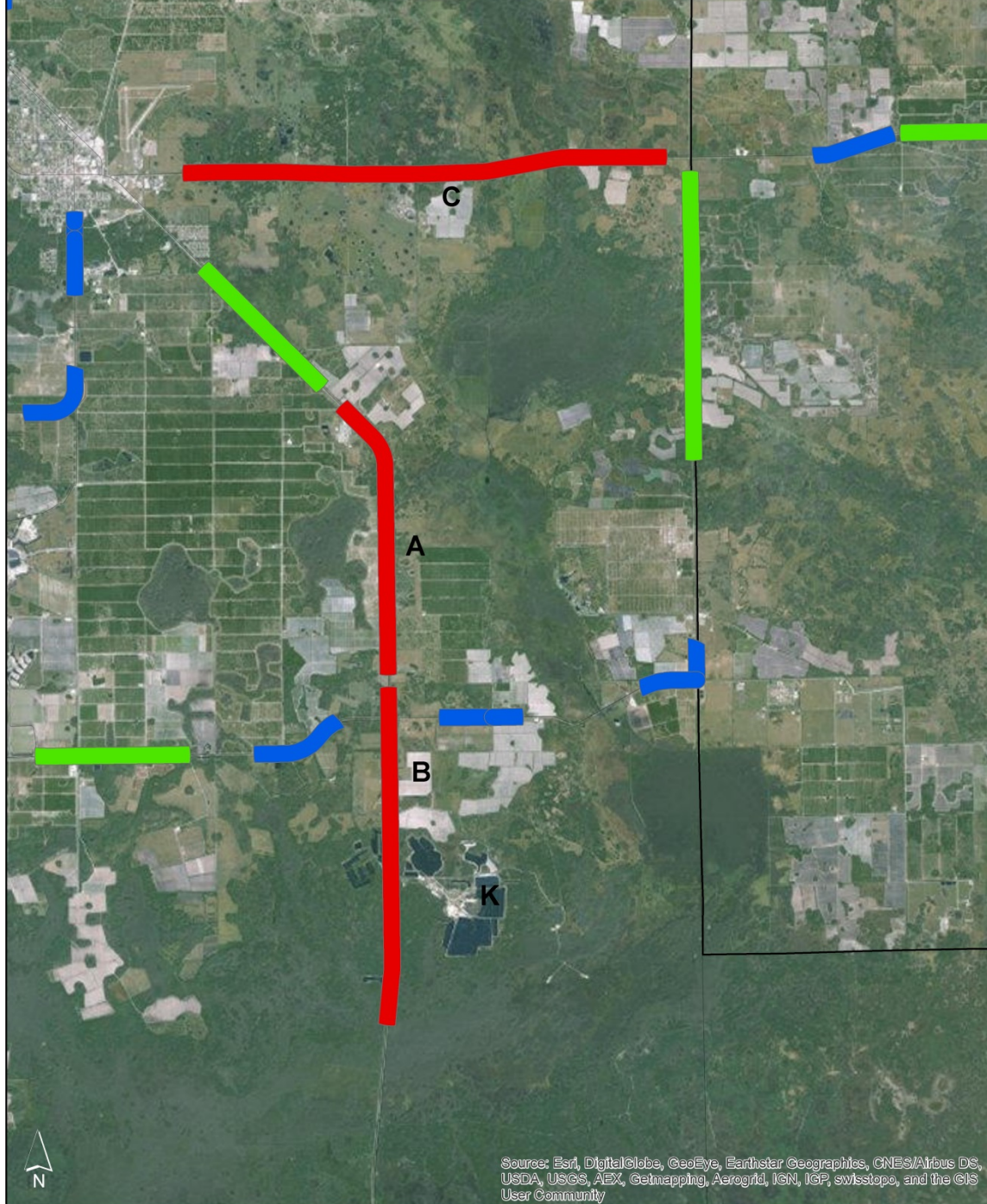


RED

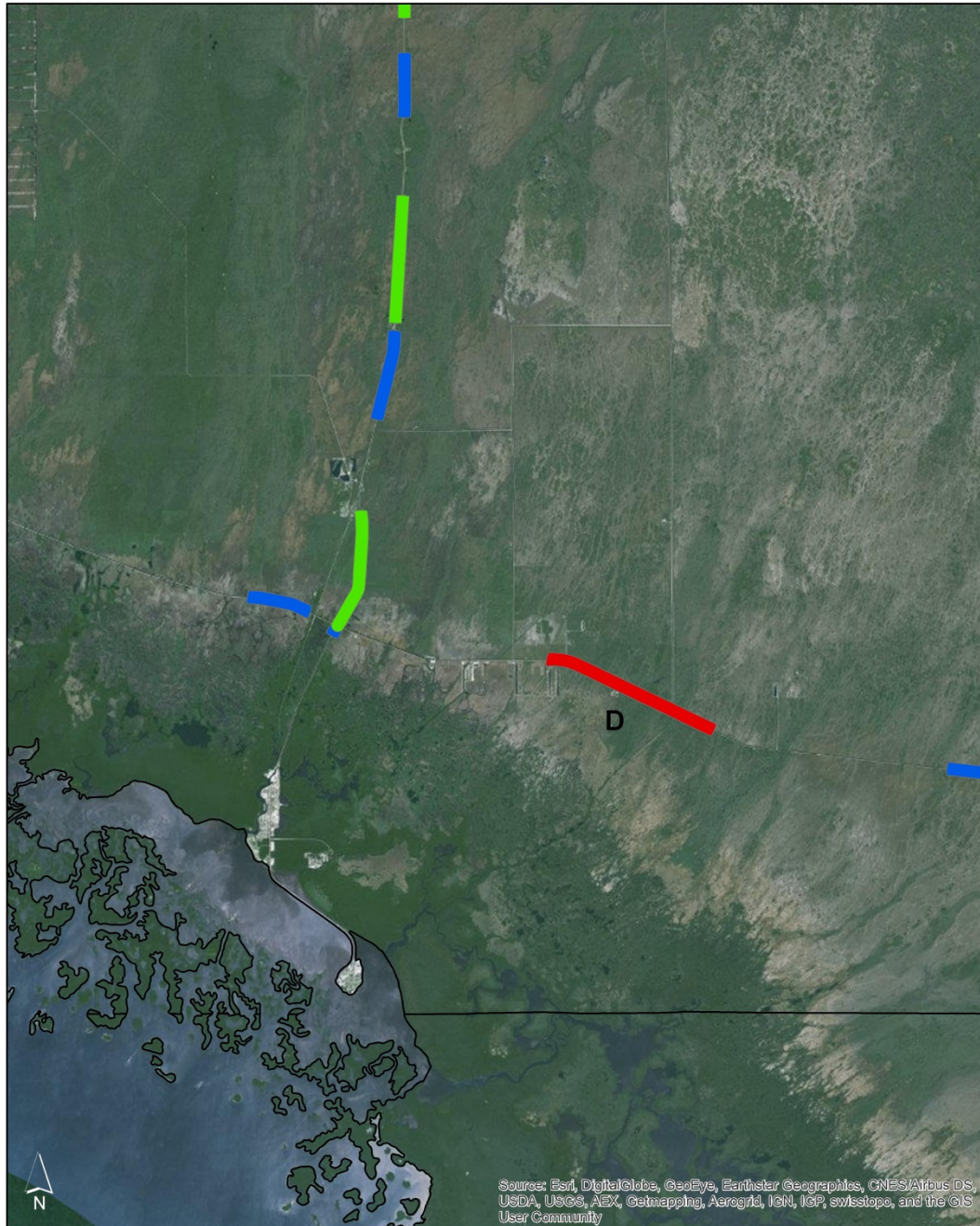
- A** SR29 north of CR858
Collier County
- B** SR29 south of CR858 to
Florida Panther NWR
Collier County
- C** CR846 east of Immokalee
Collier County
- D** US41, Turner River
Collier County

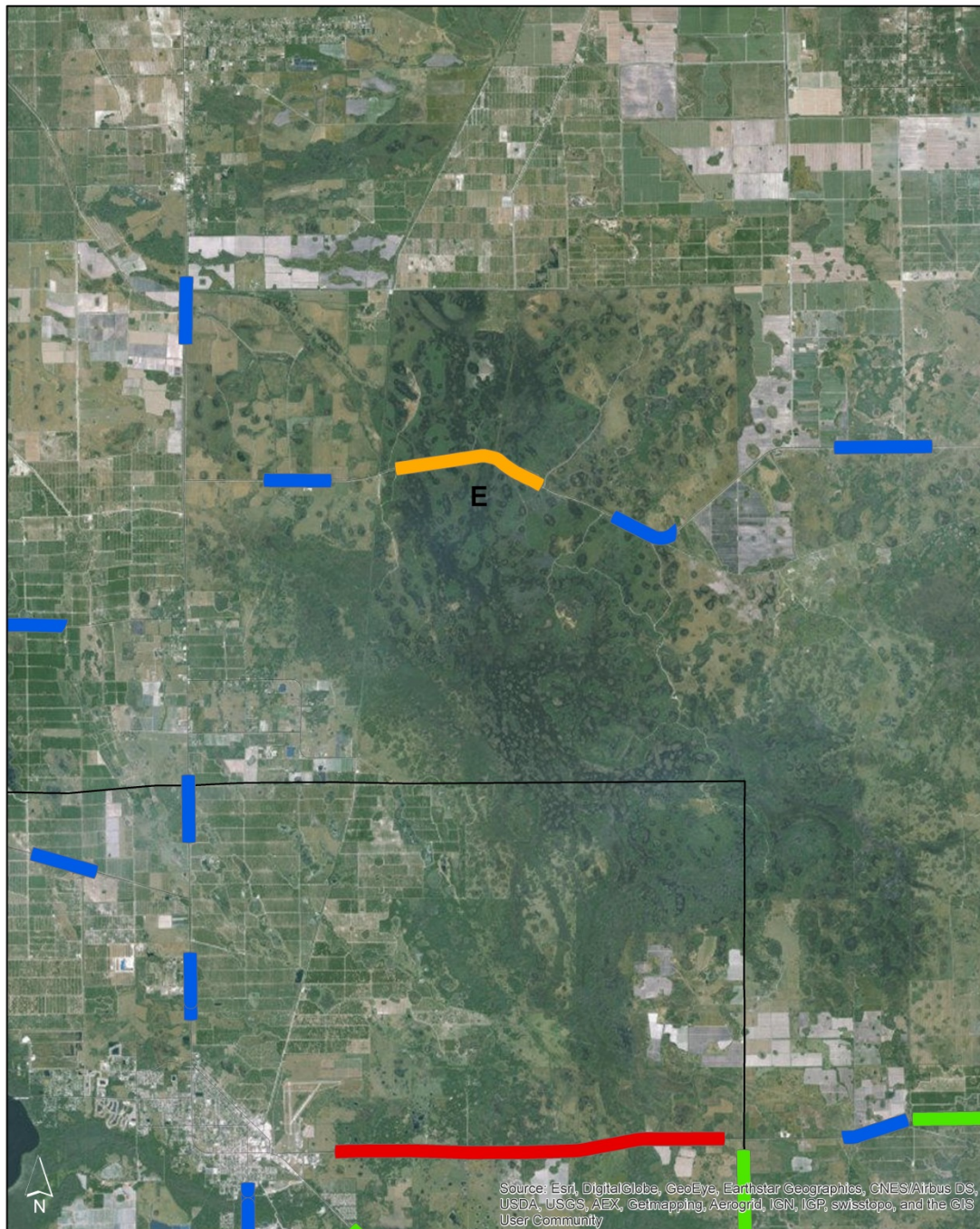
ORANGE

- E** CR832, Keri Road
Hendry County



Source: Esri, DigitalGlobe, GeoEye, Earthstar Geographics, CNES/Airbus DS, USDA, USGS, AEX, Getmapping, Aerogrid, IGN, IGP, swisstopo, and the GIS User Community





Source: Esri, DigitalGlobe, GeoEye, Earthstar Geographics, CNES/Airbus DS, USDA, USGS, AeroX, Getmapping, Aerogrid, IGN, IGP, swisstopo, and the GIS User Community

Next Steps

Recommend risk-reduction measures

- Specific locations for improvements
- Funding options



Questions and Comments



Backup slides of maps

