

Figure 1. Santa Rosa Plain Conservation Strategy Study Area

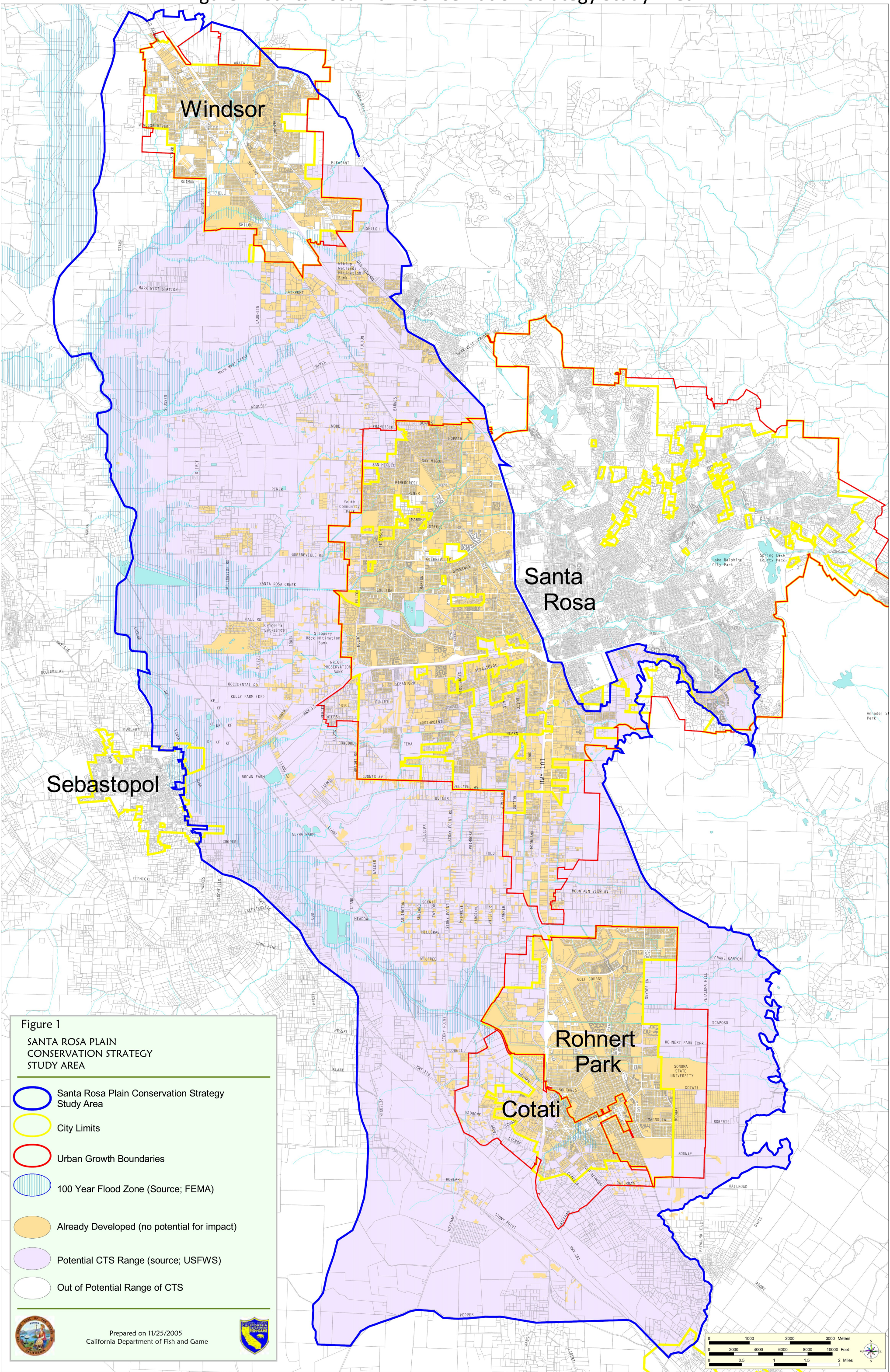


Figure 1  
SANTA ROSA PLAIN  
CONSERVATION STRATEGY  
STUDY AREA

-  Santa Rosa Plain Conservation Strategy Study Area
-  City Limits
-  Urban Growth Boundaries
-  100 Year Flood Zone (Source; FEMA)
-  Already Developed (no potential for impact)
-  Potential CTS Range (source; USFWS)
-  Out of Potential Range of CTS



Prepared on 11/25/2005  
California Department of Fish and Game

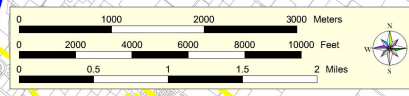




Figure 2. Santa Rosa Plain Conservation Areas

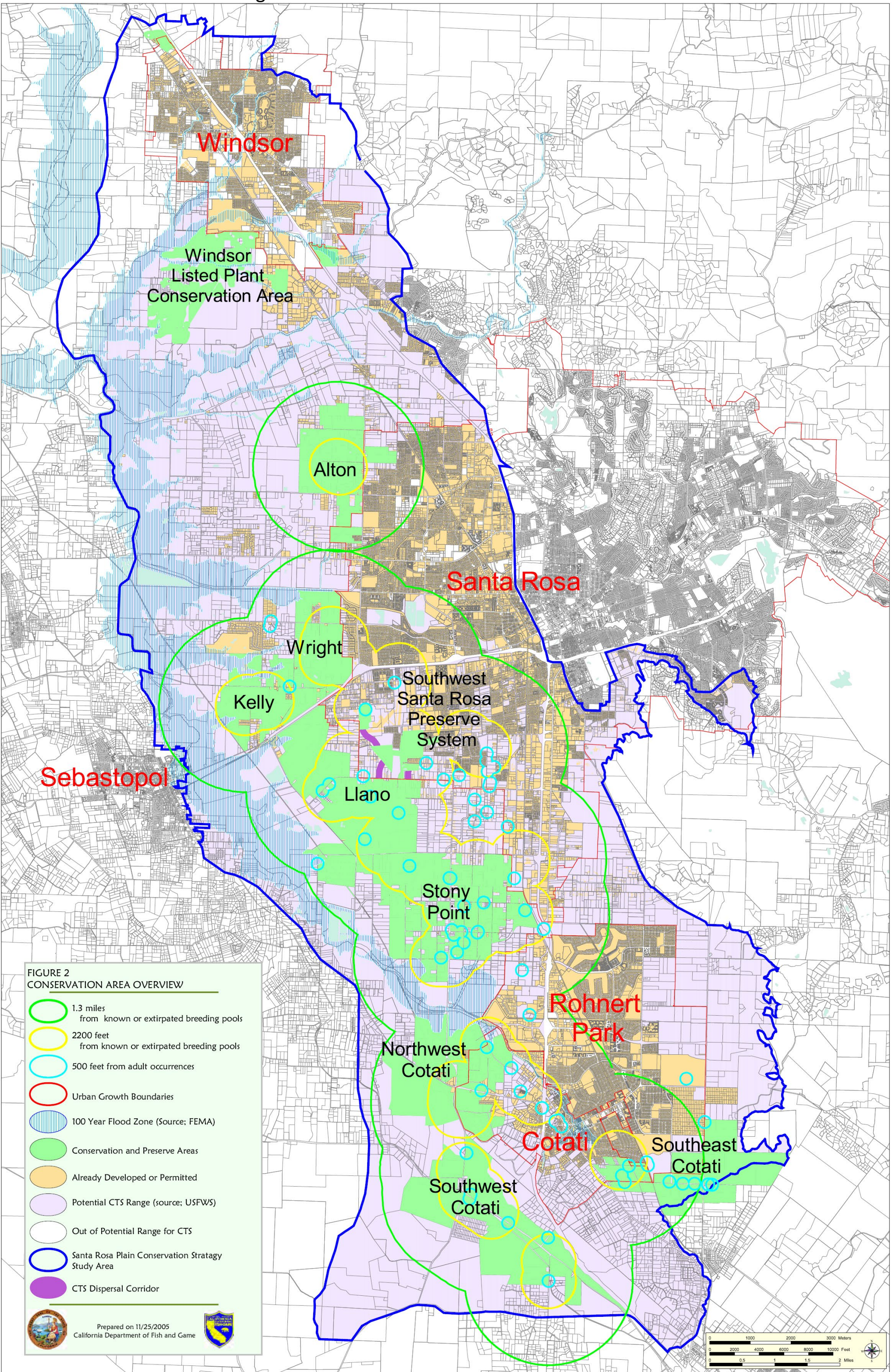
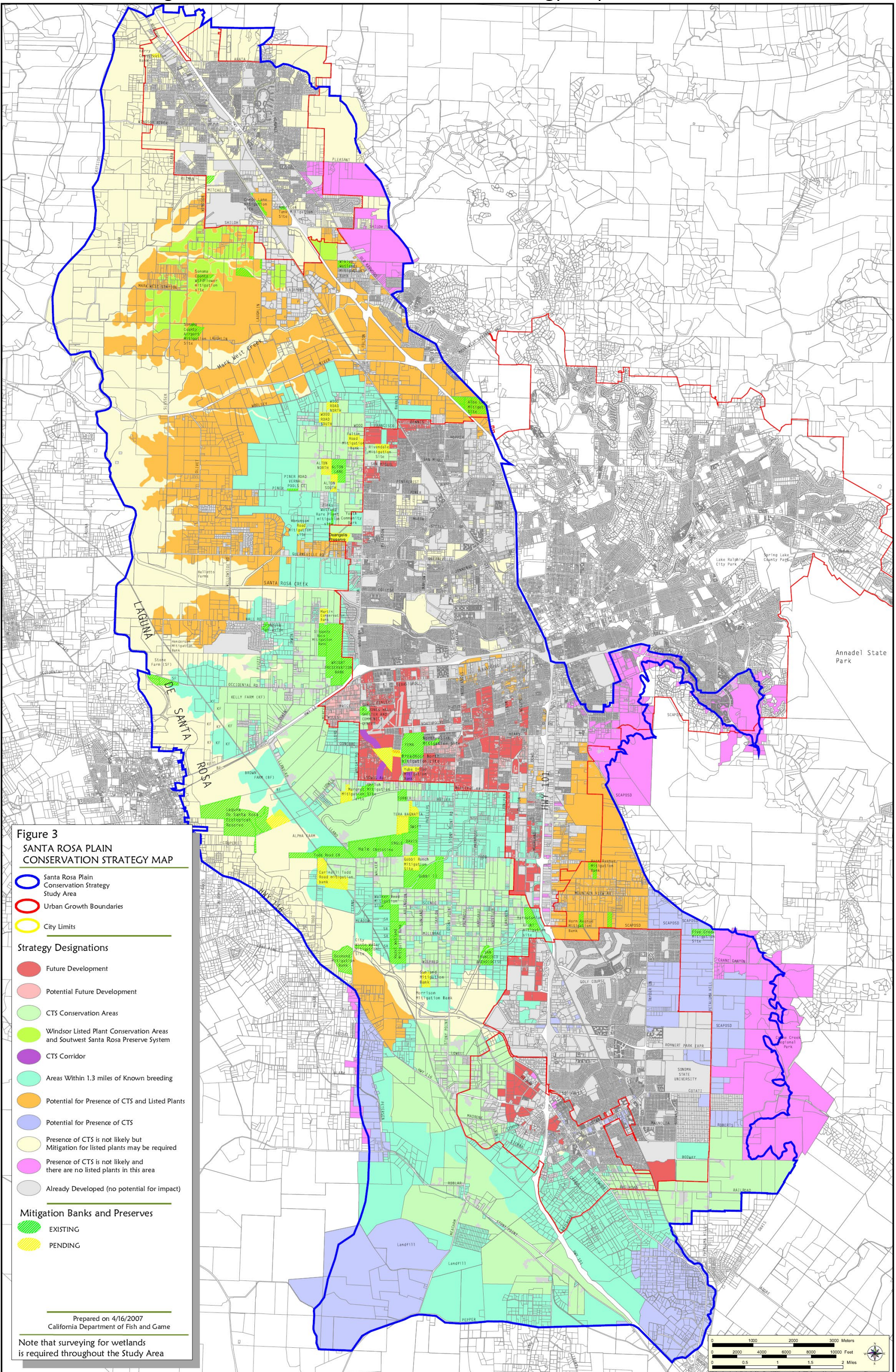




Figure 3. Santa Rosa Plain Conservation Strategy Map Revised 2007



**Figure 3**  
**SANTA ROSA PLAIN**  
**CONSERVATION STRATEGY MAP**

- Santa Rosa Plain Conservation Strategy Study Area
  - Urban Growth Boundaries
  - City Limits
- Strategy Designations**
- Future Development
  - Potential Future Development
  - CTS Conservation Areas
  - Windsor Listed Plant Conservation Areas and Southwest Santa Rosa Preserve System
  - CTS Corridor
  - Areas Within 1.3 miles of Known breeding
  - Potential for Presence of CTS and Listed Plants
  - Potential for Presence of CTS
  - Presence of CTS is not likely but Mitigation for listed plants may be required
  - Presence of CTS is not likely and there are no listed plants in this area
  - Already Developed (no potential for impact)
- Mitigation Banks and Preserves**
- EXISTING
  - PENDING

Prepared on 4/16/2007  
 California Department of Fish and Game

Note that surveying for wetlands is required throughout the Study Area

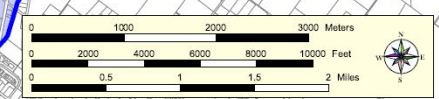




Figure 4. Alton Conservation Area Map

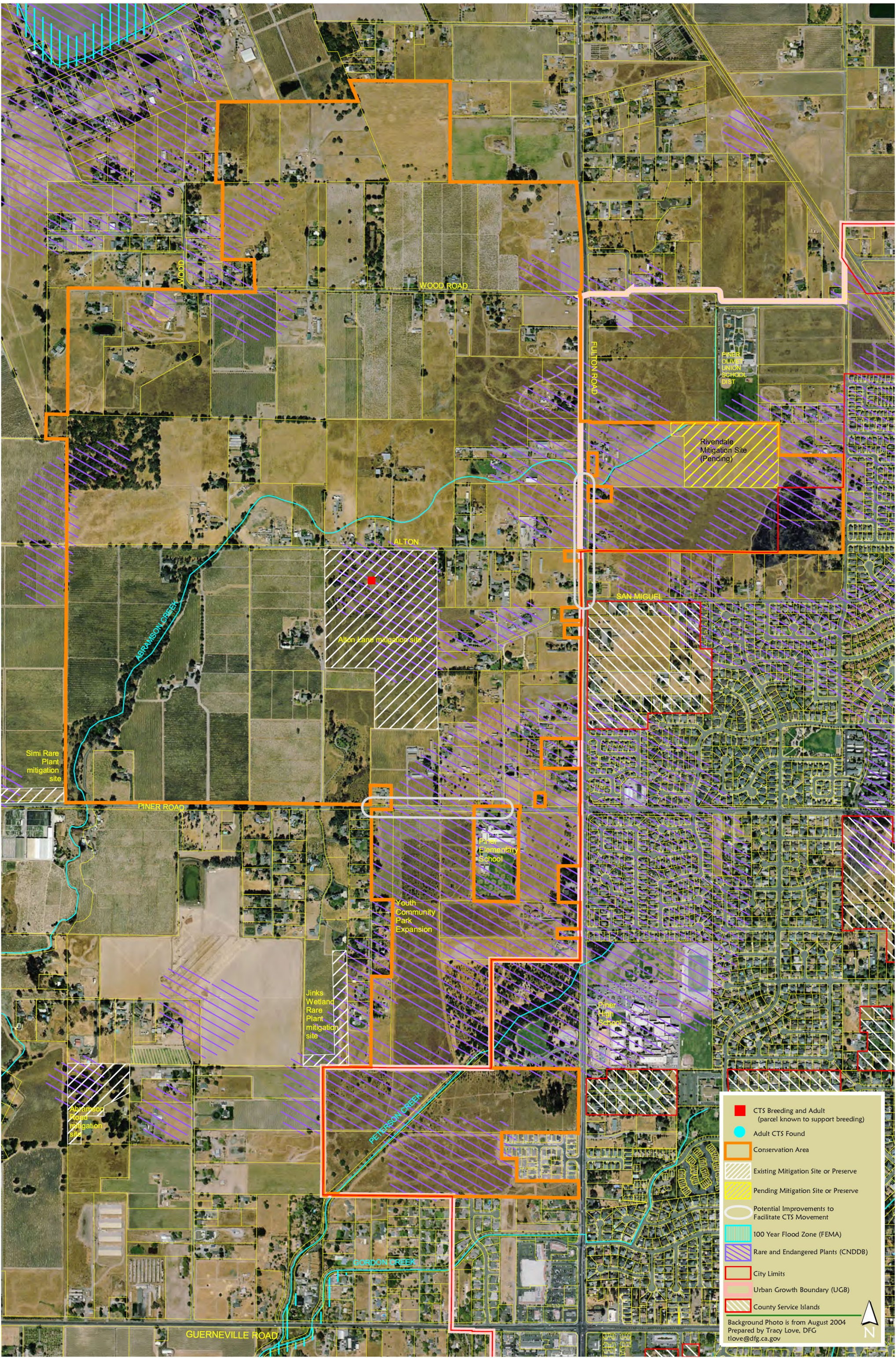


Figure 4 - Santa Rosa Plain Conservation Strategy - Alton Conservation Area - 11/25/05



Figure 5. Wright Conservation Area Map

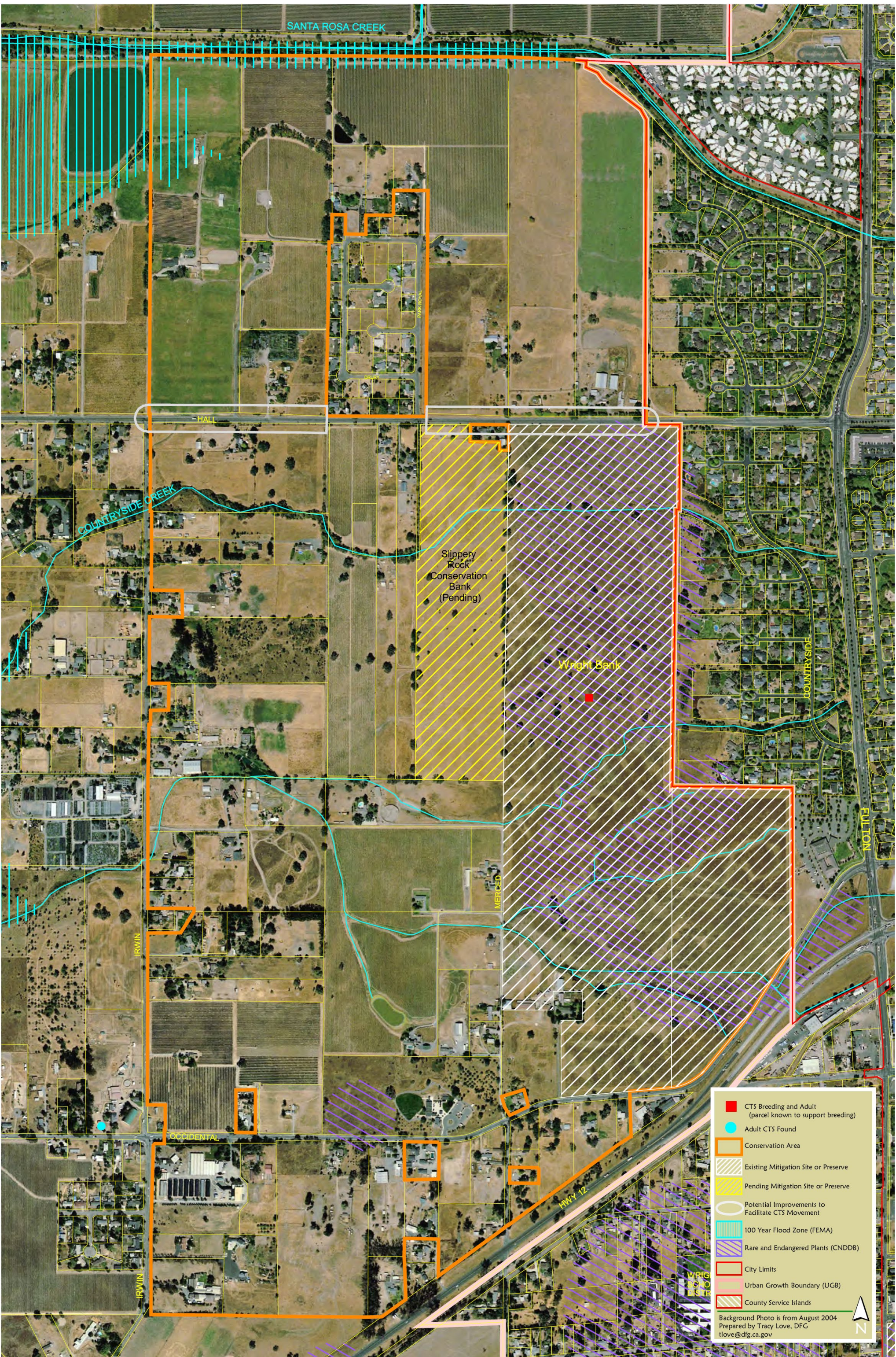


Figure 5 - Santa Rosa Plain Conservation Strategy - Wright Conservation Area - 11/25/05