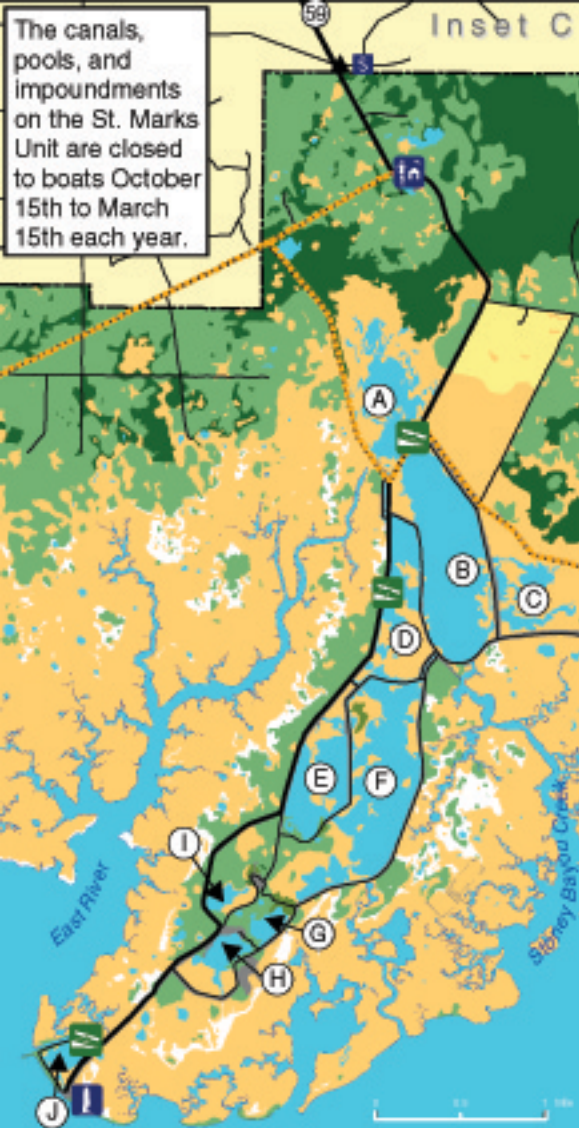


The canals, pools, and impoundments on the St. Marks Unit are closed to boats October 15th to March 15th each year.

Inset C



- | | |
|------------------------|-----------------------|
| (A) East River Pool | (F) Mounds Pool no. 3 |
| (B) Stoney Bayou no. 1 | (G) Tower Pond |
| (C) Stoney Bayou no. 2 | (H) Picnic Pond |
| (D) Mounds Pool no. 1 | (I) Headquarters Pond |
| (E) Mounds Pool no. 2 | (J) Lighthouse Pond |

Ecosystems

Open water

Freshwater & saltwater marsh

Coastal salt flats

Color Key

Lowland hardwoods

Flatwoods pine & mixed hardwoods

Upland pine & mixed hardwoods

Grasslands

Infrastructure & recreational

Florida Trail