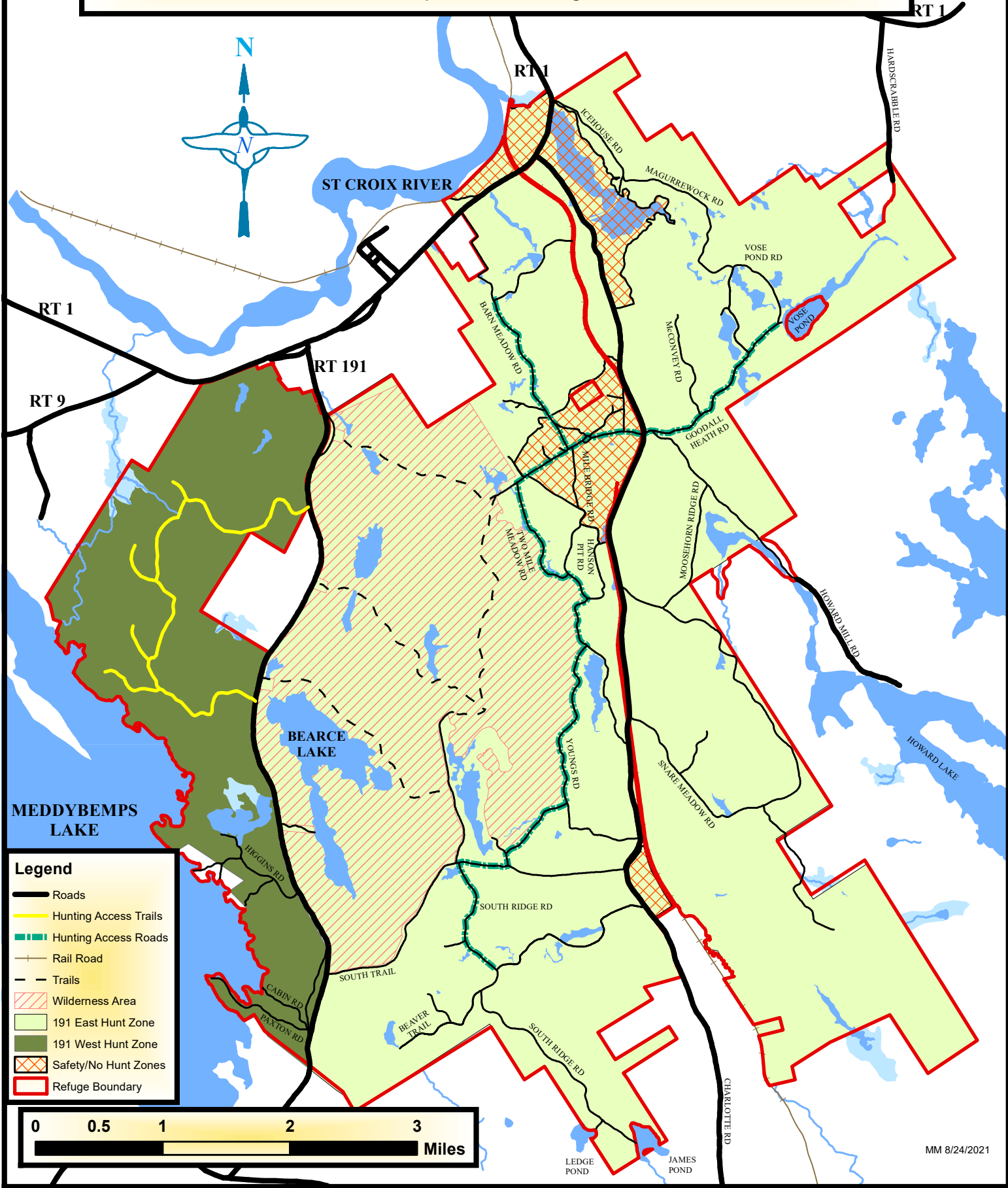


MOOSEHORN NATIONAL WILDLIFE REFUGE

Baring Division - Hunting Map

Phone 207-454-7161, E-mail: fw5rw_mhnwr@fws.gov
103 Headquarters Rd, Baring, ME 04694

N

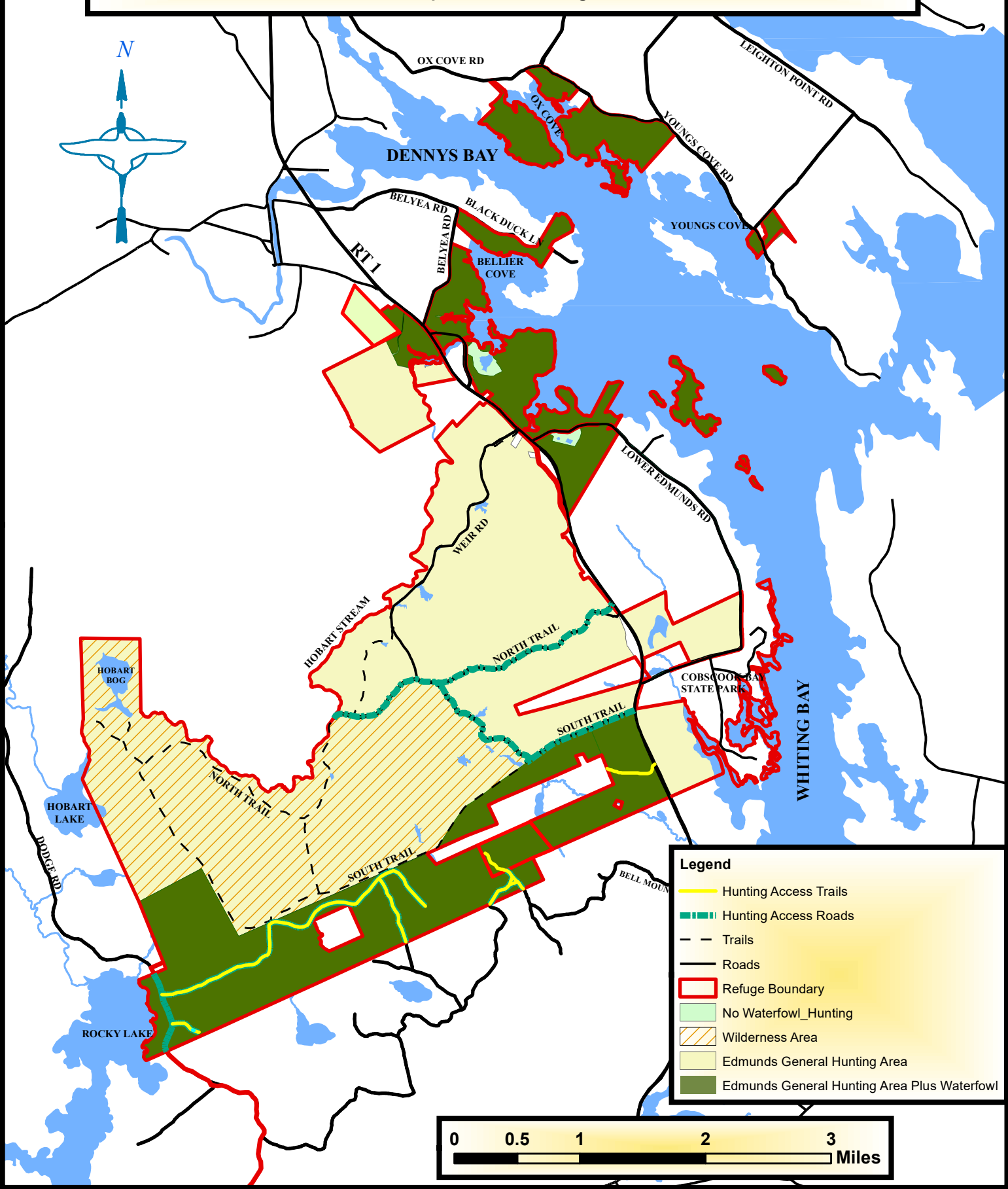


MOOSEHORN NATIONAL WILDLIFE REFUGE

Edmunds Division - Hunting Map

Phone 207-454-7161, E-mail: fw5rw_mhnwr@fws.gov
103 Headquarters Rd, Baring, ME 04694

N



HUNTING RULES & REGULATIONS

Taken From 50 CFR (Code of Federal Regulations)

Hunting Permit

Only persons possessing and carrying a current signed, Moosehorn National Wildlife Refuge (NWR) Hunting permit and the appropriate State hunting license(s) are authorized to hunt on the refuge. Permits and regulations are available at the refuge office in the leaflet dispenser outside the office entry or by mail (Moosehorn National Wildlife Refuge, 103 Headquarters Road, Baring, ME 04694, or online at: https://www.fws.gov/sites/default/files/documents/2025-08/hunt-permit-moosehorn-nwr_2025_26.pdf

License Requirements

All hunters on Moosehorn NWR must follow the licensing guidelines set by the state of Maine. Hunters must be in possession of their refuge hunting permit and state hunting license at all times while hunting on the refuge.

Hours

We allow hunters to enter the refuge 1 hours before legal shooting hours, and they must exit the refuge by 1 hour past legal shooting hours, except for hunters pursuing raccoons at night. Legal hunting hours follow State regulations.

Tree Stands/Blinds

The construction or use of permanent structures is prohibited on refuge lands. Only temporary or portable stands, blinds and ladders may be used. Any tree stand left overnight must have the name, address, phone number, and hunting license number of the owner clearly printed on it. Migratory game bird hunters are required to remove all portable or temporary blinds and decoys from the refuge following each day's hunt.

Tree stands and blinds must be at least 50 yards from any road that is open to vehicle traffic.

Tree stands and blinds may not be set up prior to the first day of the archery deer season. You must remove all tree stands, blinds, and ladders from the refuge on the last day of the muzzleloader deer season.

Trimming or cutting branches is prohibited. It is unlawful to drive a nail, spike climbing screw or other metal object into any tree or to hunt from any tree in which a nail, spike, climbing screw or other metal object has been driven.

Non toxic Shot

Hunters must use and possess only non-toxic shot while hunting migratory game birds and upland game.

Youth Hunting Day

We allow youth hunting during the state prescribed youth hunting days in accordance with State regulations and bag limits

Baiting

Baiting or hunting over bait is prohibited on the Refuge for all species, including coyotes and bears.

Blaze Orange Requirements

Hunters must follow the State hunter orange clothing requirements.

Camping and fires

Camping and overnight parking are prohibited. Fires are prohibited. Please remove litter from the refuge.

Vehicles

Only legally licensed vehicles are allowed on refuge roads. Vehicles are permitted only on public roads and refuge access roads. Off road vehicles including ATVs are prohibited.

Wilderness Area

We prohibit motorized or mechanized vehicles and equipment in designated Wilderness Areas. This includes all vehicles and items such as winches, pulleys, and wheeled game carriers. Animals harvested within the Wilderness Areas MUST be removed by hand without the aid of mechanical equipment of any type.

Alcoholic Beverages

The possession or use of alcoholic beverages while hunting is prohibited.

Dogs

Dogs actively engaged in hunting upland game birds, waterfowl and other migratory birds, and snowshoe hare are permitted off leash.

You must register with the refuge office prior to hunting black bear, bobcat, raccoon, or eastern coyote with trailing dogs.

Artificial Light

The use of a spotlight or any other artificial light, including automotive headlights for the purpose of spotting, locating, or taking any animal is prohibited all year. Night coyote hunting during the appropriate season with proper equipment and permits is excepted from this rule.

Game Cameras and UAS

The use of game or trail cameras and drones (Unmanned Aircraft Systems) are prohibited on refuge lands.

Closed Areas to ALL Hunting

HUNTING IS NOT ALLOWED IN THE FOLLOWING AREAS: The Magurrewock Marsh and Field Areas, on both sides of US Route 1; the Southern Gavel Pit, Cobscook Bay State Park, and posted safety zone around the refuge headquarters. Closed Areas and No-Hunt Zones are designated on the Hunt Map and posted with appropriate signs.

Moosehorn Game Sanctuary: Maine Department of Inland Fisheries and Wildlife has designated the abandoned railroad right of way from US Route 1 in Calais to the Baring-Charlotte Town Line as the Moosehorn Game Sanctuary. This area is closed to hunting and trapping.

WHERE, WHEN AND WHAT CAN YOU HUNT?

Moose

You must have a valid State issued moose permit for the appropriate Wildlife Management District (WMD 27 or 28) to hunt moose.

When and where can you hunt moose?

You can hunt moose on the Edmunds Division and the part of the Baring Division that lies west of State Route 191 in accordance with the State prescribed moose hunting seasons.

Bear

We allow hunting of black bear in accordance with State regulations and bag limits. You must register with the Refuge office prior to hunting bear with trailing dogs.

When and where can you hunt bear?

- We allow bear hunting during State Prescribed Seasons. You may hunt bear west of Route 191on the Baring Division
- You may hunt bear east of Route 191 on the Baring Division with a BOW ONLY during the deer archery season.
- You may hunt bear east of Route 191 on the Baring Division with a firearm during the deer firearms season.
- You may hunt bear on the Edmunds Division
- See “Closed Area” section for closed hunting areas.

White-Tail Deer

We allow hunting of white-tail deer in accordance with State regulations, seasons, and bag limits.

When can you hunt Deer?

You may hunt both the Baring and Edmunds Division in accordance with the State prescribed deer seasons.

Where can you hunt Deer?

You may hunt both the Baring and Edmunds Division of Moosehorn NWR in accordance with the State prescribed seasons. See “Closed Areas” section for areas that are closed to hunting.

Coyote

We allow hunting of coyote in accordance with State regulations and bag limits, with the exception that harvested coyotes must be retrieved by the hunter. See other restrictions below. You must register with the Refuge office prior to hunting coyote with trailing dogs.

When and where can you hunt coyote?

- We allow coyote hunting from Oct. 1 to March 31, including night hunting on the Baring Division West of Route 191 and on the Edmunds Division. When night hunting coyotes, a State-issued night hunting permit is required, and hunters must be in possession of an electronic, handheld, or mouth operated calling device.
- You may hunt coyote east of Route 191 on the Baring Division with a BOW ONLY during the deer archery season.
- You may hunt coyote east of Route 191 on the Baring Division with a firearm during the firearms and muzzleloader deer seasons.

Upland Game

We allow hunting of bobcat, ruffed grouse, snowshoe hare, red fox, gray and red squirrel, raccoon, skunk, and woodchuck in accordance with the State regulations and bag limits. See other restrictions below. You must register with the refuge office prior to hunting bobcat, raccoon or red fox with trailing dogs.

Hunters must use and possess only non-toxic shot while hunting upland game.

When and where can you hunt Upland Game?

We allow hunting of above-mentioned upland game during the State prescribed seasons; however, we prohibit hunting on refuge lands from April 1 until the opening day of the State prescribed ruffed grouse hunting season.

You may hunt upland game species on the Edmunds Division and that part of the Baring Division that lies west of State Route 191.

Wild Turkey

We allow archery hunting of wild turkey in accordance with State regulations, and bag limits during the fall season.

When and where can you hunt Turkey?

You may hunt turkey on both the Baring and Edmunds Divisions during the State prescribed fall turkey season.

See “Closed Areas” section for areas that are closed to hunting.

How may you hunt Turkey on the Refuge?

You may only hunt turkey with the use of archery equipment.

Migratory Game Bird Hunting

We allow hunting of ducks, geese, American woodcock, and Wilson’s snipe in accordance with the State and Federal regulations and bag limits. See also “Non-Toxic Shot” section.

When and where can you hunt Migratory Game Birds?

- You may hunt migratory game birds during the state prescribed seasons.
- You may hunt waterfowl (duck and geese) in that part of the Edmunds Division that lies north of Hobart Stream and west of U.S. Route 1, and in those areas east of U.S. Route 1, and refuge lands that lie south of South Trail, and in that portion of the Baring Division that lies west of State Route 191.
 - You may hunt American woodcock and Wilson’s snipe on the Edmunds division and that part of Baring Division that lies west of State Route 191
 - We prohibit [waterfowl](#) hunting in the Nat Smith Field and Marsh and Bills Hill Field and Ponds on the Edmunds Division.

Signs Protect Visitors and Resources

Millions of people visit national wildlife refuges each year. The impact of human activity, if not regulated, can degrade these wildlands. Signs control recreational activities while protecting natural resources on the refuge. Please respect the following signs.



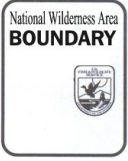
This sign delineates the refuge boundary. Entry is permitted only for authorized uses (hunting, fishing, sightseeing, etc.) in accordance with refuge regulations.



This area is closed to all entry. No hunting fishing or sightseeing is permitted. No roads or trails are open to the public.



This area is closed to all hunting. Firearms and archery equipment are strictly prohibited (see map).



This sign delineates the wilderness boundary. Entry is permitted only for authorized uses in accordance with refuge regulations. This is a sensitive area set aside to protect and preserve its natural conditions and which generally appears to have been affected primarily by the forces of nature, with the imprint of man's work unnoticable.