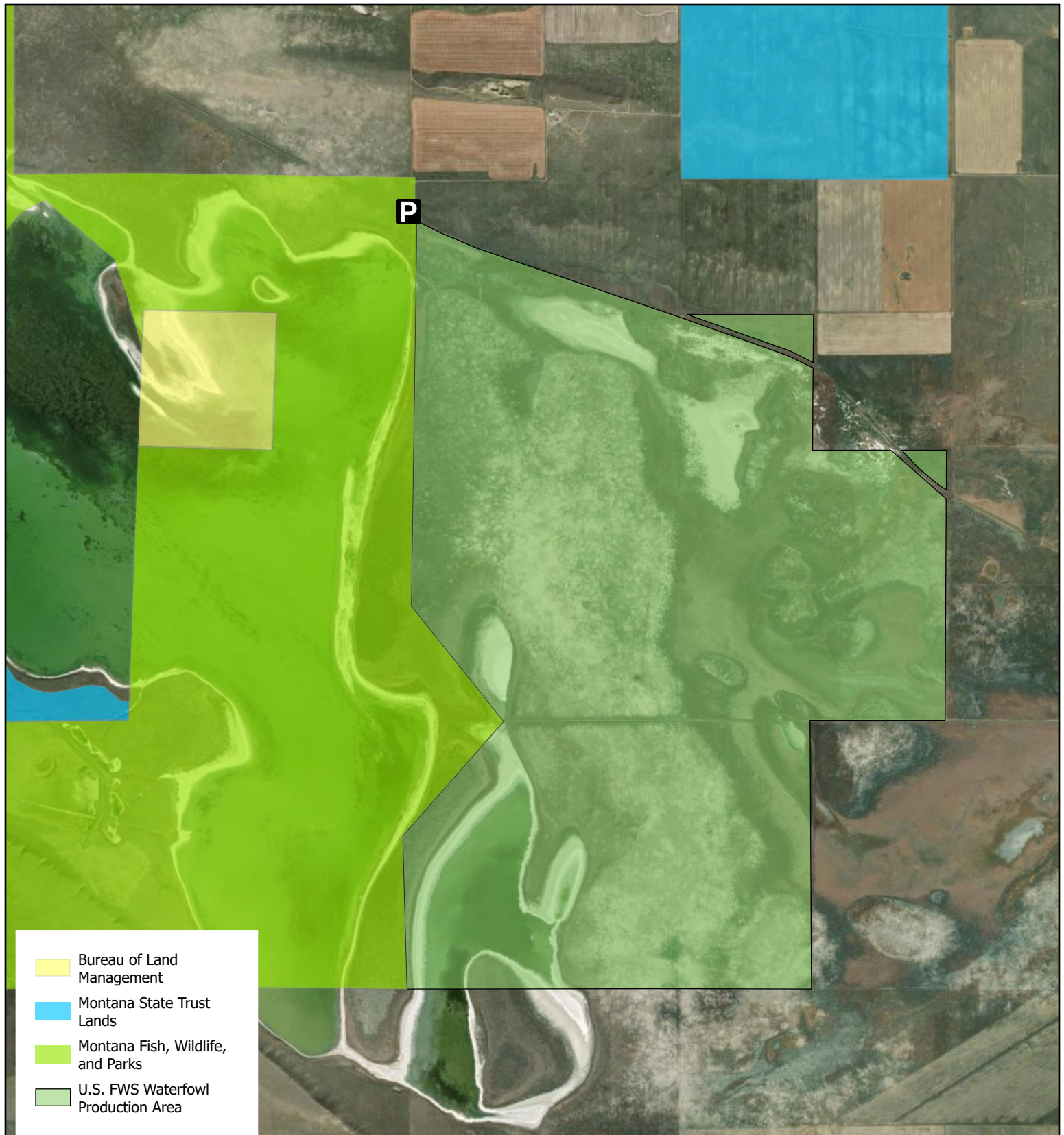


James L. Hansen WPA



Georeferenced satellite imagery map showing the location of the James L. Hansen Waterfowl Production Area (2,683-ac) located in Stillwater County, Montana. It lies immediately adjacent to and east of the State Fish, Wildlife and Parks owned Big Lake Wildlife Management Area. This WPA is managed by and a component of the Charles M. Russell Wetland Management District.

