



United States Department of the Interior



FISH AND WILDLIFE SERVICE
Red Bluff Fish & Wildlife Office
10950 Tyler Road, Red Bluff, California 96080
(530) 527-3043, FAX (530) 529-0292

April 24, 2017

To: Interested Parties

From: Scott Voss, Fish Biologist, Red Bluff Fish and Wildlife Office

Subject: Biweekly report (February 26, 2017 - March 11, 2017)

Please find attached preliminary daily estimates of passage, 90% confidence intervals, and fork length ranges of unmarked juvenile salmonids sampled at Red Bluff Diversion Dam for the period February 26, 2017 through March 11, 2017. Race designation was assigned using length-at-date criteria.

This report also contains graphical displays of salmonid passage dating back to 2010 for comparison.

Please note that data contained in these reports is subject to revision as this data is preliminary and undergoing QA/QC procedures.

If you have any questions, please feel free to contact me at (530) 527-3043 ext 243.

Table 1.— Preliminary estimates of passage by brood-year (BY) and run for unmarked juvenile Chinook salmon and steelhead trout captured by rotary-screw traps at Red Bluff Diversion Dam (RK391), Sacramento River, CA, for the dates listed below. Results include estimated passage, peak river discharge volume, water temperature, turbidity, and fork length (mm) range in parentheses. A dash (-) indicates that sampling was not conducted on that date.

Date	Discharge volume (cfs) ¹	Water temperature (°C)	Water turbidity (NTU)	Estimated passage				
				BY16 Winter	BY16 Spring	BY16 Fall	BY16 Late-Fall	BY17 RBT
2/26/2017	82,300	8.6	—	—	—	—	—	—
2/27/2017	80,800	8.6	—	—	—	—	—	—
2/28/2017	80,100	8.6	—	—	—	—	—	—
3/1/2017	79,200	8.7	—	—	—	—	—	—
3/2/2017	77,700	8.9	—	—	—	—	—	—
3/3/2017	72,500	8.9	—	—	—	—	—	—
3/4/2017	61,700	9.2	—	—	—	—	—	—
3/5/2017	55,400	8.8	—	—	—	—	—	—
3/6/2017	51,900	8.4	—	—	—	—	—	—
3/7/2017	40,200	8.8	—	—	—	—	—	—
3/8/2017	36,400	9.4	39.3	311 (150)	0 (—)	4,655 (31 – 58)	0 (—)	0 (—)
3/9/2017	30,500	9.9	35.9	276 (136)	0 (—)	2,512 (33 – 62)	0 (—)	343 (20)
3/10/2017	26,100	10.1	34.1	596 (100 – 131)	255 (69 – 75)	3,488 (32 – 64)	0 (—)	0 (—)
3/11/2017	22,800	10.4	31.6	886 (93 – 147)	208 (67 – 75)	3,179 (31 – 61)	0 (—)	52 (26)
Biweekly Total ²				6,076	31,239	103,964	0	948
<i>Biweekly Lower 90% Confidence Interval</i>				324	-39,633	-81,024	0	-841
<i>Biweekly Upper 90% Confidence Interval</i>				11,827	102,110	288,952	0	2,737
Brood Year Total				531,153	106,594	8,369,331	68,931	948
<i>Brood year Lower 90% Confidence Interval</i>				383,354	-54,076	-3,488,770	36,346	-841
<i>Brood year Upper 90% Confidence Interval</i>				678,951	267,264	20,227,433	101,516	2,737

¹ Peak daily discharge values do not account for diversions at RBDD and only represent peak flows registered at the Bend Bridge Gauging station (<http://cdec2.water.ca.gov/cgi-progs/queryFx?bnd>).

² Biweekly totals may be greater than the sum of the daily estimates presented in this table if sampling was not conducted on each day of the biweekly period. A dash (-) denotes those dates. To estimate daily passage for days that were not sampled, we impute missed sample days with the weekly mean value of days sampled within the week; for weeks with no days sampled within the week a monthly mean value of days sampled within the month is used.

Juvenile Winter Chinook Salmon Estimated Passage

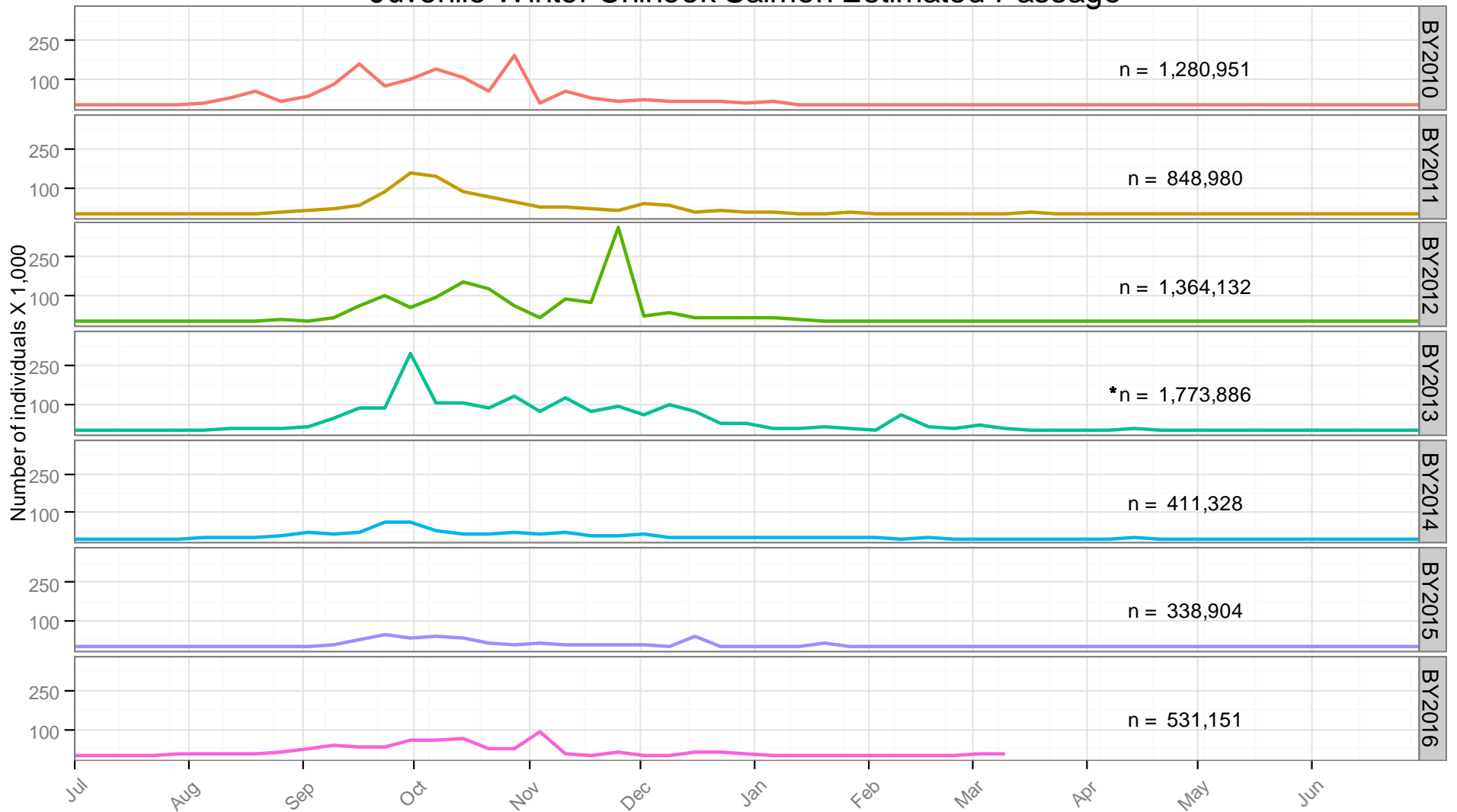


Figure 1. Weekly estimated passage of unmarked juvenile winter Chinook salmon at Red Bluff Diversion Dam (RK391) by brood-year (BY). Fish were sampled using rotary-screw traps for the period July 1, 2010 to present .

*Winter run passage value interpolated using a monthly mean for the period October 1, 2013 - October 17, 2013 due to government shutdown .

Juvenile Spring Chinook Salmon Estimated Passage

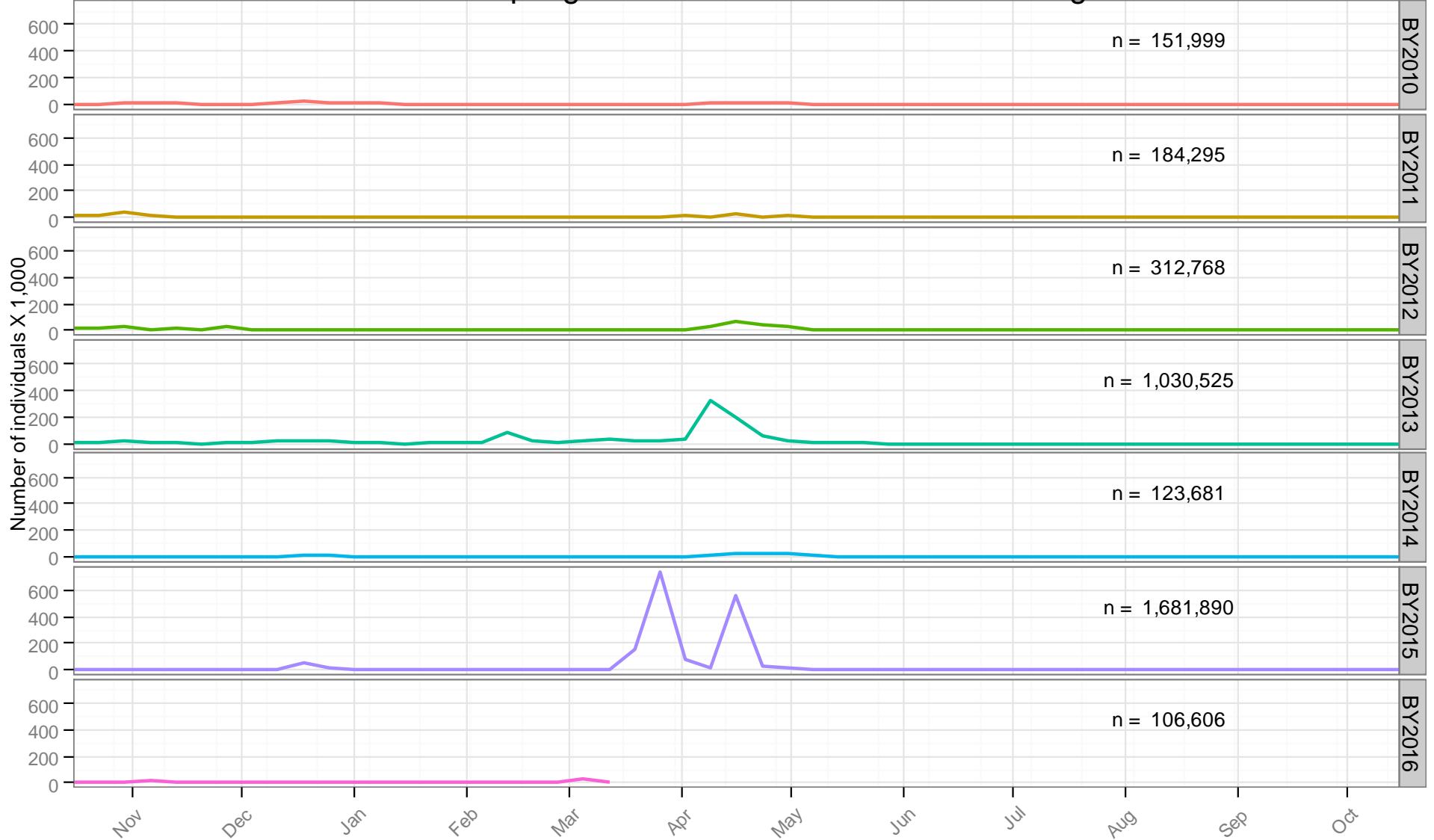


Figure 2. Weekly estimated passage of unmarked juvenile spring Chinook salmon at Red Bluff Diversion Dam (RK391) by brood-year (BY). Fish were sampled using rotary-screw traps for the period October 16, 2010 to present .

Juvenile *Onchorhyncus mykiss* Estimated Passage

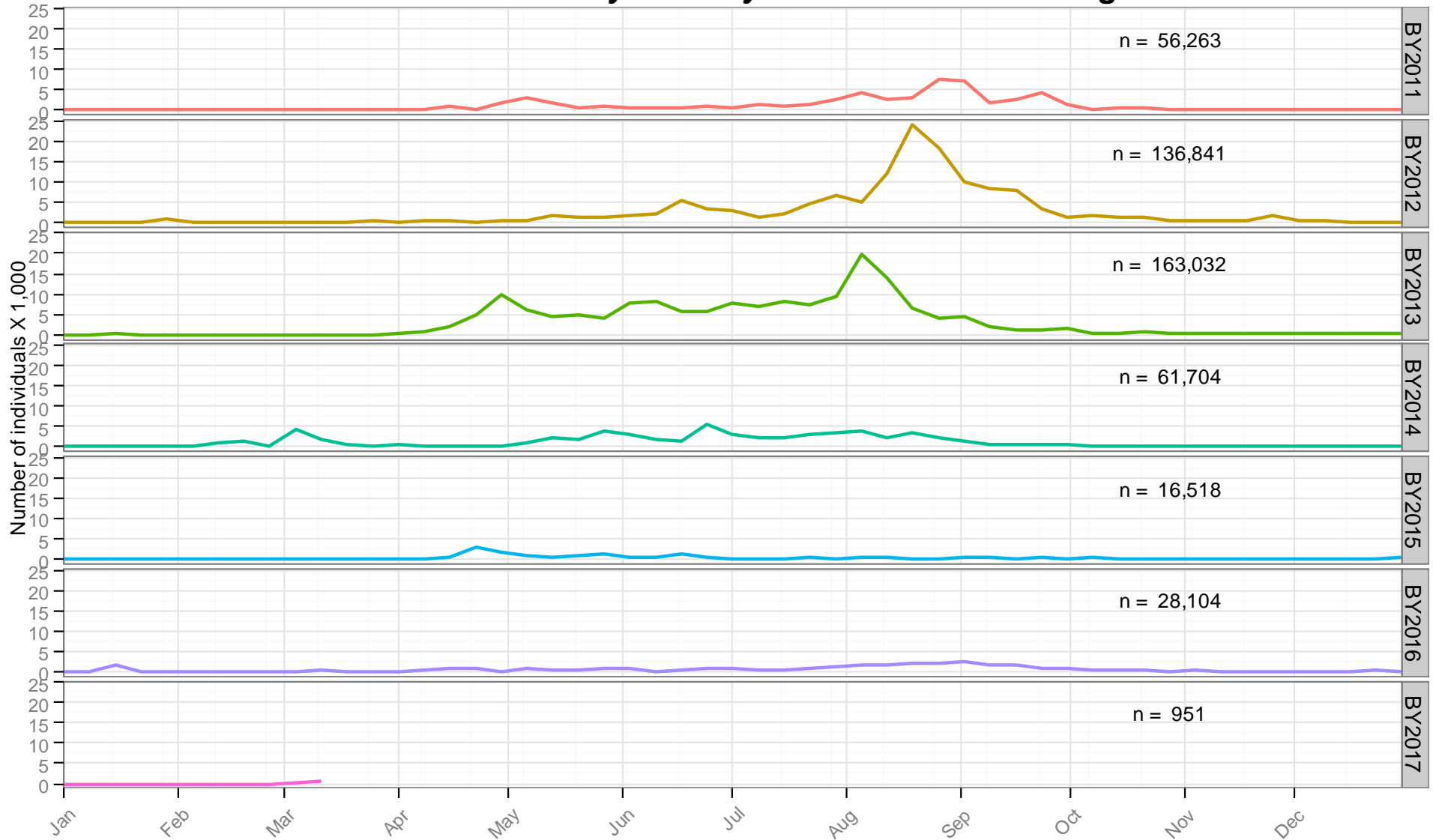


Figure 3. Weekly estimated passage of unmarked juvenile Rainbow/Steelhead trout at Red Bluff Diversion Dam (RK391) by brood-year (BY). Fish were sampled using rotary-screw traps for the period January 1, 2011 to present.

Juvenile Fall Chinook Salmon Estimated Passage

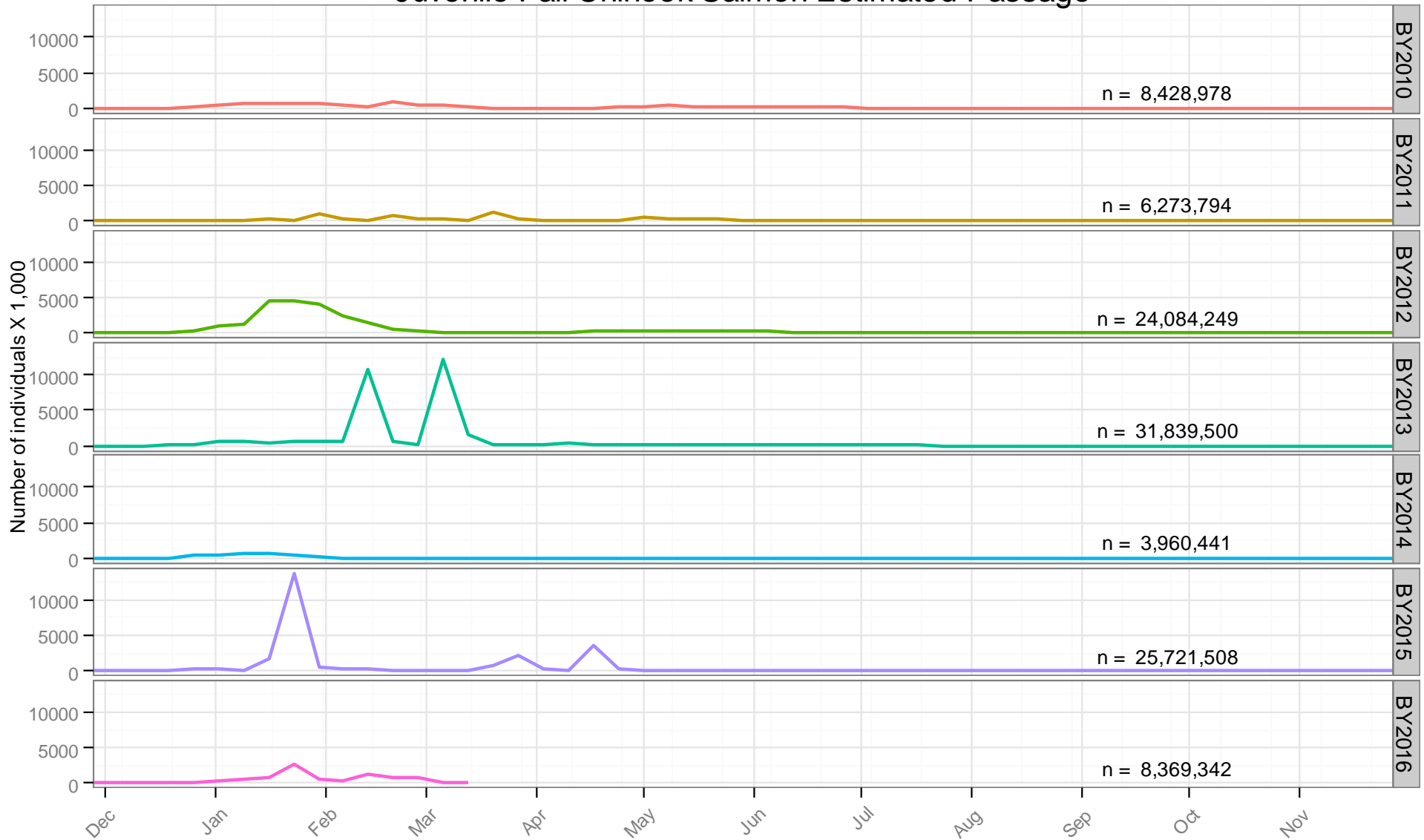


Figure 4. Weekly estimated passage of unmarked juvenile fall Chinook salmon at Red Bluff Diversion Dam (RK391) by brood-year (BY). Fish were sampled using rotary-screw traps for the period December 1, 2010 to present.

Juvenile Late Fall Chinook Salmon Estimated Passage

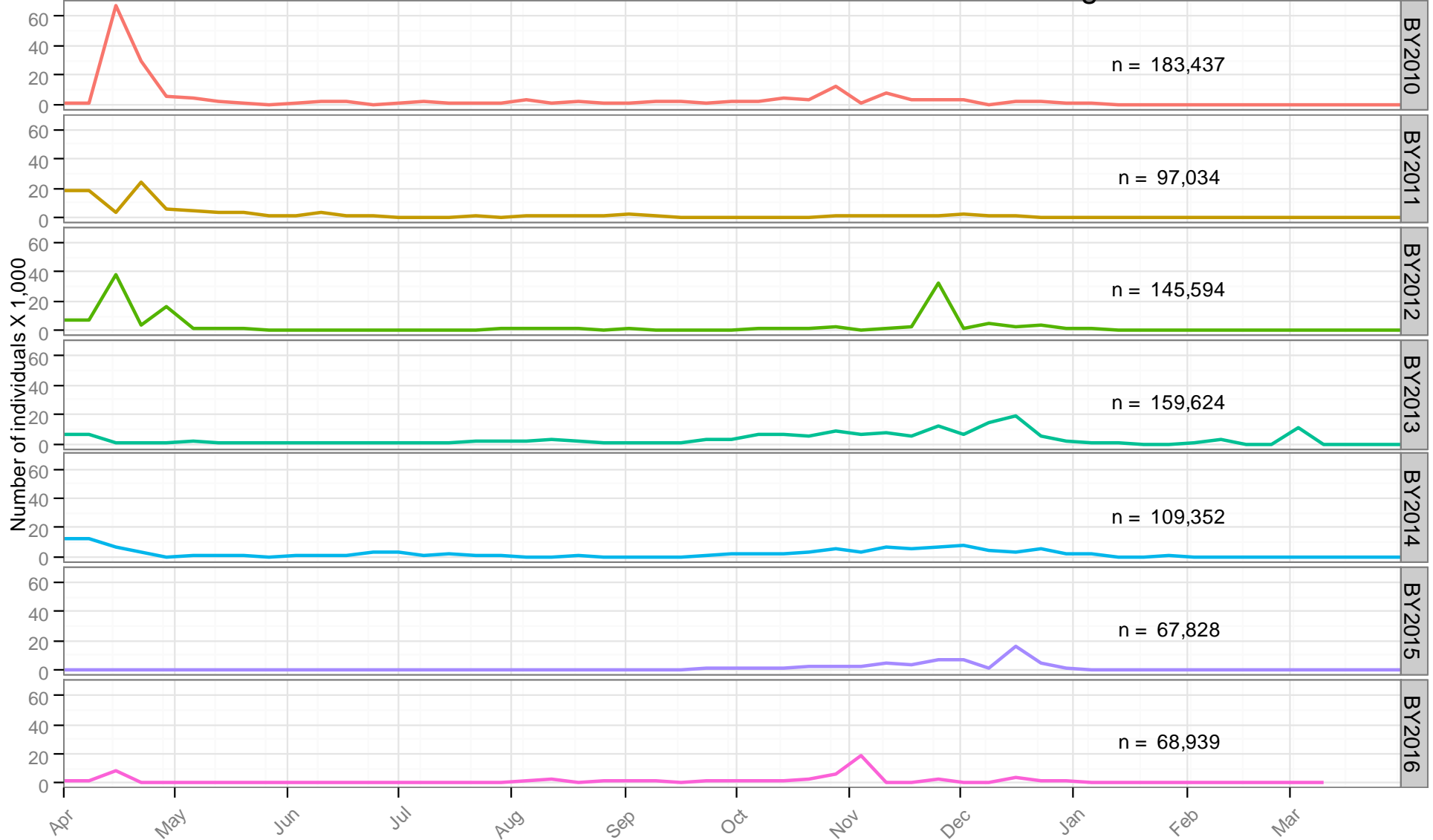


Figure 5. Weekly estimated passage of unmarked juvenile late fall Chinook salmon at Red Bluff Diversion Dam (RK391) by brood-year (BY). Fish were sampled using rotary-screw traps for the period April 1, 2010 to present .

Weekly Estimated Chinook Passage at Red Bluff Diversion Dam - All Runs Combined

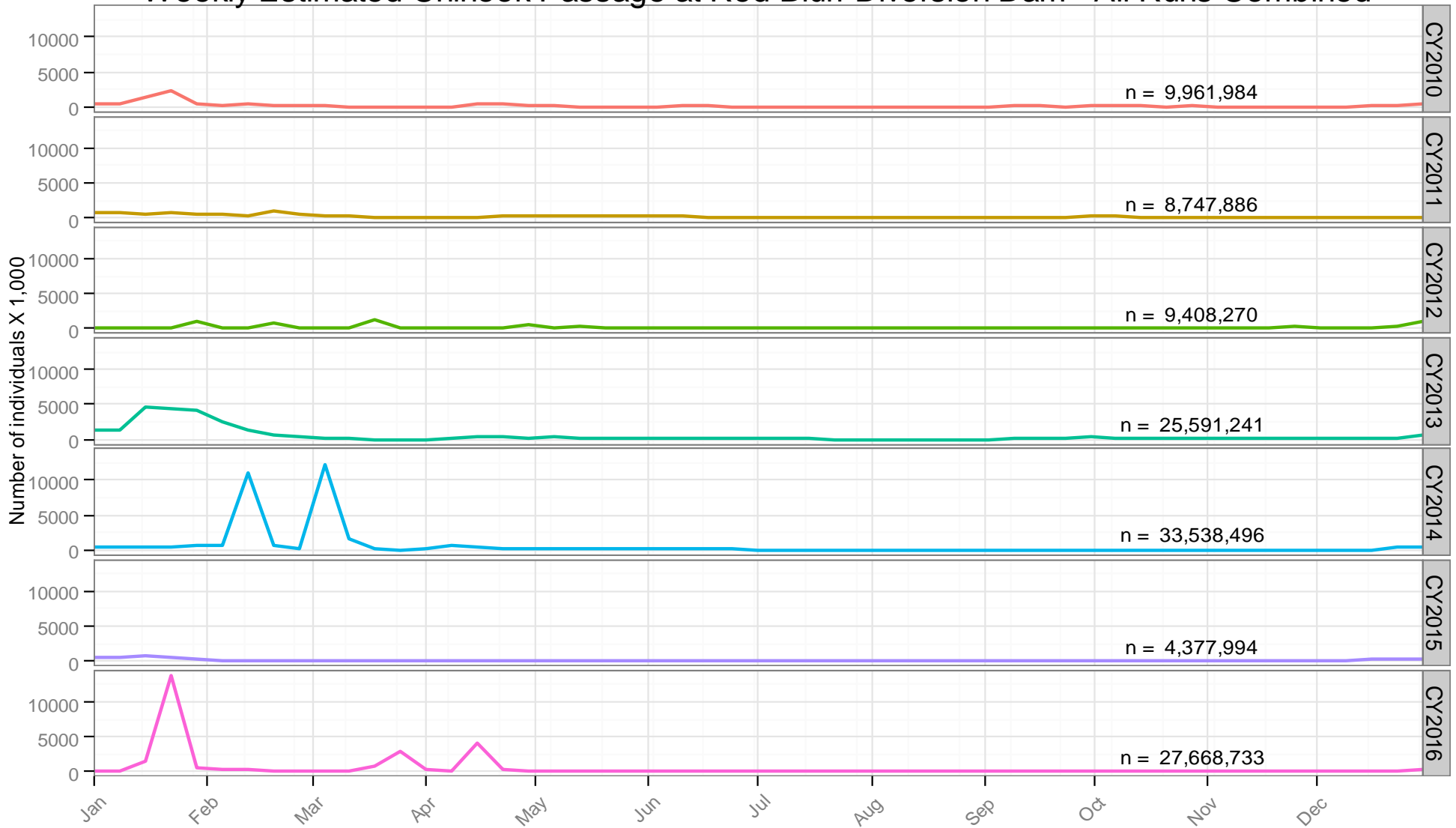


Figure 6. Weekly estimated passage of unmarked juvenile Chinook salmon at Red Bluff Diversion Dam (RK391) by calendar year. Fish were sampled using rotary-screw traps for the period January 1, 2010 to December 31, 2016