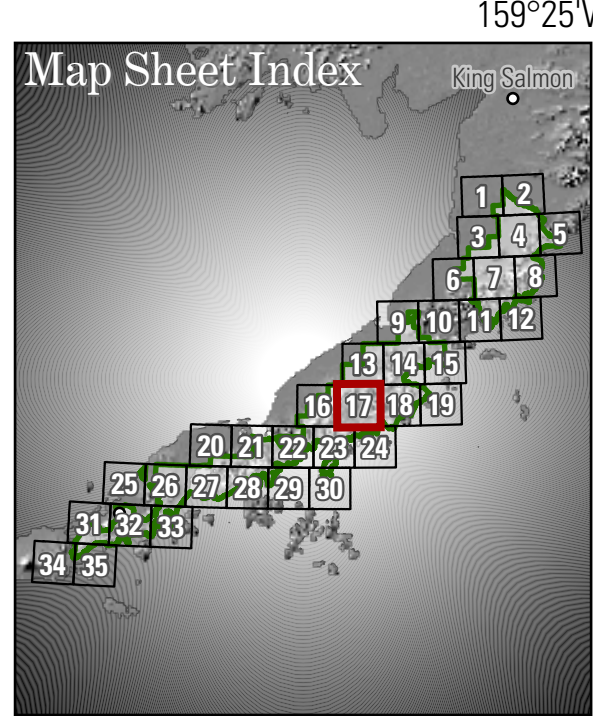
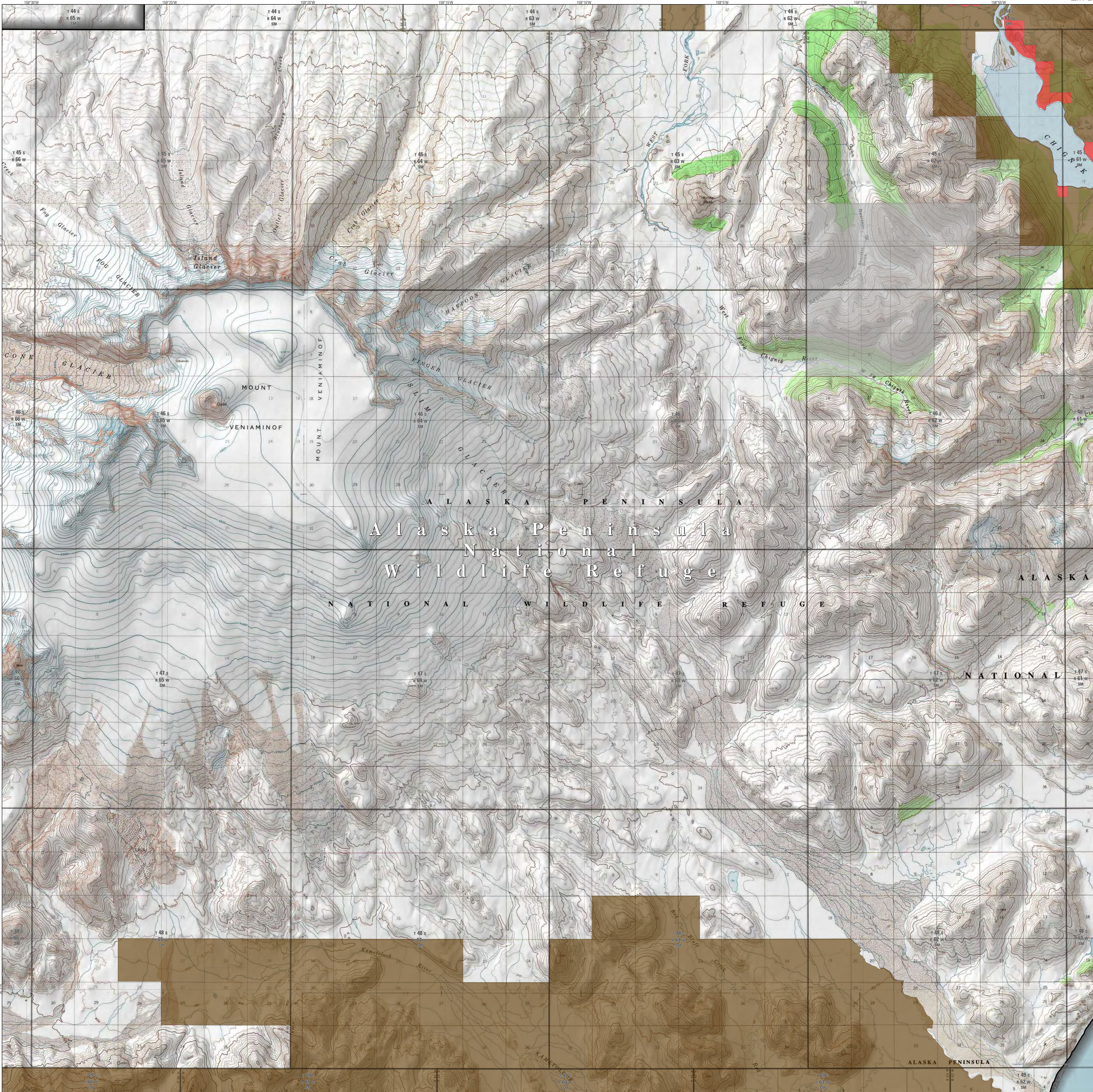
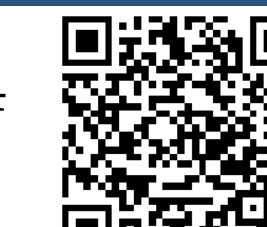




# Alaska Peninsula National Wildlife Refuge

Alaska

Map Series: GLS30-2024  
Map Sheet: AKP-17



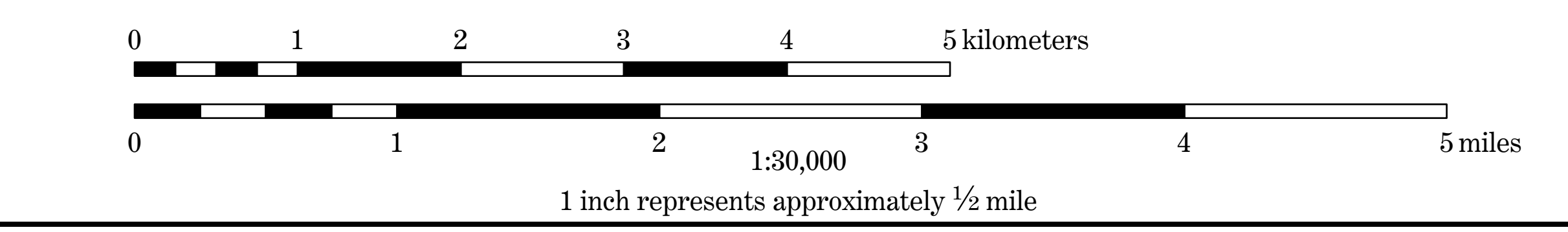
Map compiled by U.S. Fish & Wildlife Service, Region 7, Division of Realty, Anchorage, AK, January 1, 2024.  
Land status information was obtained from Bureau of Land Management Master Title Plate. Land Status is current to January 1, 2024.  
Datum: NAD83  
Projection: Albers Equal Area  
Central Meridian: 154° W  
Standard Parallels: 55° N and 65° N  
Latitude of Origin: 60° N  
Base map: 1:62,500 topographic map series, USGS and National Geographic Society

This map is intended to be used for general purposes only. The topographic base map was compiled at a scale of 1:62,500, or 1 inch representing 1 mile. It is therefore not suitable for highly precise positioning or uses which require a high degree of positional accuracy.  
Boundaries and land ownership parcels depicted on this map were compiled from multiple sources, at multiple scales with various levels of accuracy, and are therefore only a graphic representation of the true legal descriptions. For accurate legal descriptions of parcel boundaries, consult the Bureau

of Land Management Alaska Region, or the State of Alaska, Department of Natural Resources Recorder's Office.  
It is the map user's responsibility to ascertain their position with respect to public versus private land. The U.S. Fish and Wildlife Service shall therefore not be held accountable or responsible for any possible trespass on private land by users of this map.  
Please visit <https://arcgis.com/arcgis> for more information and to obtain adjacent map sheets.

## Alaska Peninsula National Wildlife Refuge

Map Series: GLS30-2024  
Map Sheet: AKP-17



**Land Status Notes**  
Selected refers to parcels of public land that have been chosen by an individual, organization, or the State of Alaska for possible transfer to private or State of Alaska ownership. Selected land within the external National Wildlife Refuge boundary remains under the management jurisdiction of the U.S. Fish & Wildlife Service.  
Conveyed refers to parcels of public land that have been patented or otherwise legally transferred into private or State of Alaska ownership. Entry upon conveyed land requires approval from the land owner.  
With the exception of Federal Submerged Land, ownership of submerged land beneath inland waters is not shown or implied on this map.  
For more information about Alaska Peninsula National Wildlife Refuge, visit the refuge website at [https://www.fws.gov/refuge/alaska\\_peninsula](https://www.fws.gov/refuge/alaska_peninsula)

| Selected | Surface Estate Land Status | Conveyed | Other Status |
|----------|----------------------------|----------|--------------|
|          | Native Allotment           |          |              |
|          | Other Private              |          |              |
|          | Native Village Corporation |          |              |
|          | State of Alaska            |          |              |
|          |                            |          |              |

All general land status categories are shown above. Some, or all, of these categories may not occur on this map sheet.