



U.S. Fish & Wildlife Service

NH

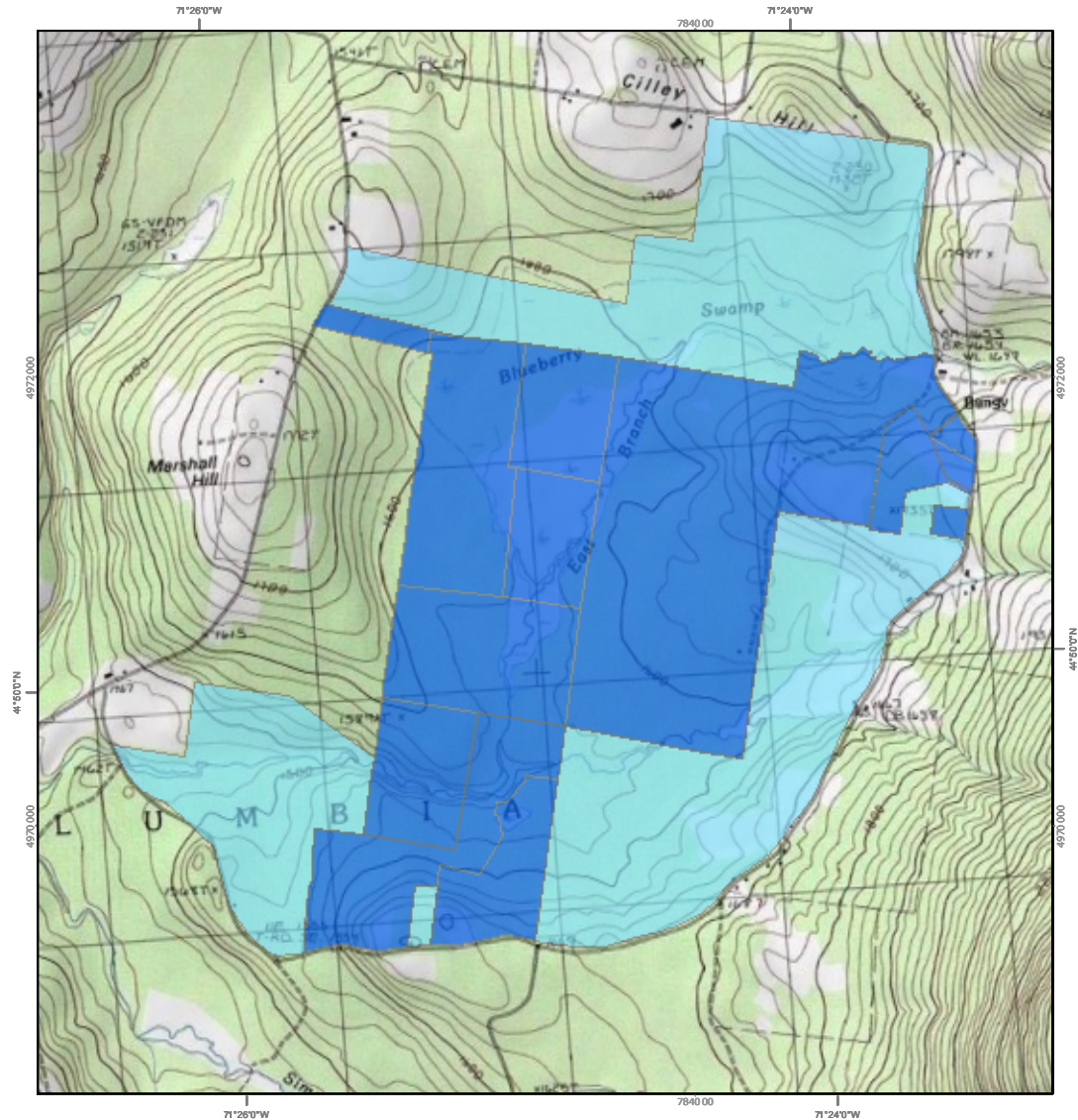
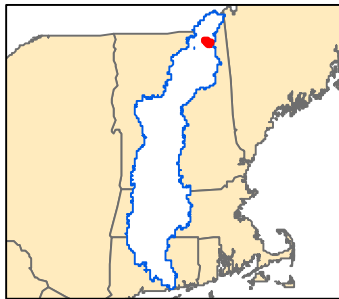
# Mohawk River Division

## Silvio O. Conte National Fish and Wildlife Refuge



### Blueberry Swamp Division (1,990 acres)

- Acquired Refuge Fee Land (1,023 acres)
- Approved for purchase from Willing Sellers



Map Projection: NAD\_1983\_UTM\_Zone\_18N  
 Graphic Units: degrees, minutes, seconds  
 Map Grid Unit: Meter  
 Created by: David Sagan  
 06-26-2010

