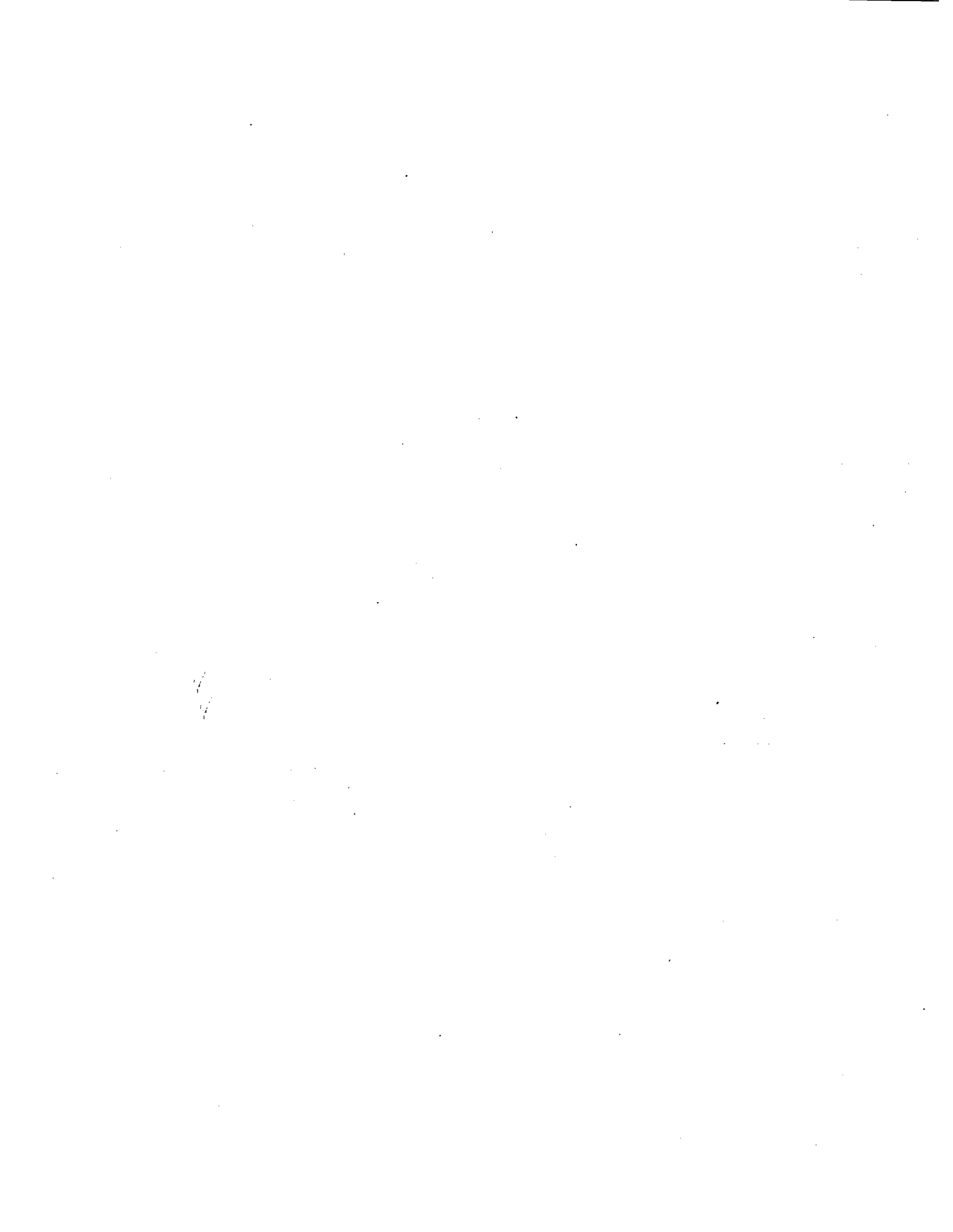


HABITAT MANAGEMENT GUIDELINES FOR THE WOOD STORK IN THE SOUTHEAST REGION





**HABITAT MANAGEMENT GUIDELINES
FOR THE WOOD STORK IN THE
SOUTHEAST REGION**

Prepared by

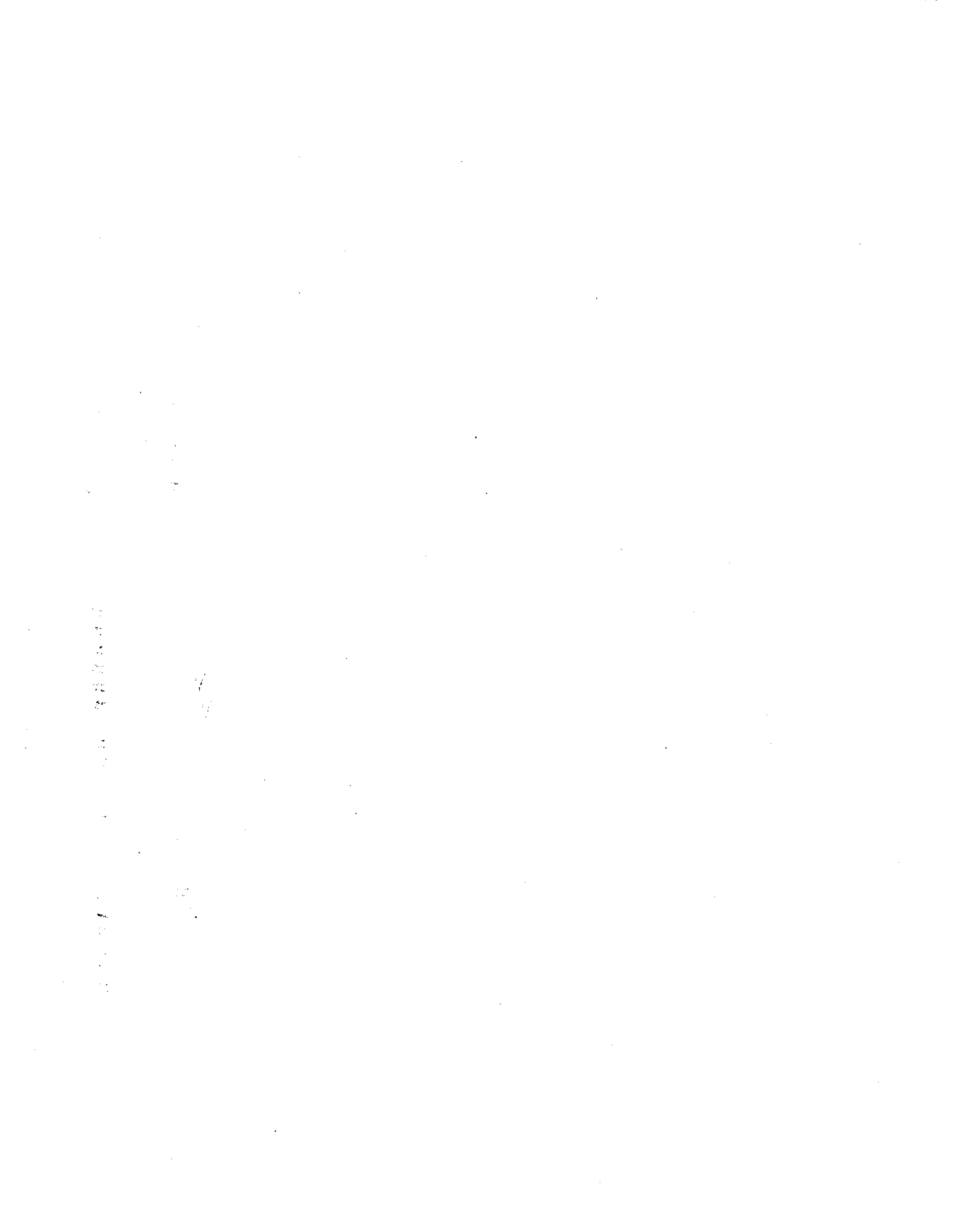
**John C. Ogden
Acting Program Manager
Wildlife Research
Everglades National Park**

for the

**Southeast Region
U.S. Fish and Wildlife Service**

January 1990

**Cover design by
Florida Power & Light Company
Miami, Florida**



HABITAT MANAGEMENT GUIDELINES FOR THE WOOD STORK IN THE SOUTHEAST REGION

Introduction

A number of Federal and state laws and/or regulations prohibit, cumulatively, such acts as harrassing, disturbing, harming, molesting, pursuing, etc., wood storks, or destroying their nests (see Section VII). Although advisory in nature, these guidelines represent a biological interpretation of what would constitute violations of one or more of such prohibited acts. Their purpose is to maintain and/or improve the environmental conditions that are required for the survival and well-being of wood storks in the southeastern United States, and are designed essentially for application in wood stork/human activity conflicts (principally land development and human intrusion into stork use sites). The emphasis is to avoid or minimize detrimental human-related impacts on wood storks. These guidelines were prepared in consultations with state wildlife agencies and wood stork experts in the four southeastern states where the wood stork is listed as Endangered (Alabama, Florida, Georgia, South Carolina).

General

The wood stork is a gregarious species, which nests in colonies (rookeries), and roosts and feeds in flocks, often in association with other species of long-legged water birds. Storks that nest in the southeastern United States appear to represent a distinct population, separate from the nearest breeding population in Mexico. Storks in the southeastern U.S. population have recently (since 1980) nested in colonies scattered throughout Florida, and at several central-southern Georgia and coastal South Carolina sites. Banded and color-marked storks from central and southern Florida colonies have dispersed during non-breeding seasons as far north as southern Georgia, and the coastal counties in South Carolina and southeastern North Carolina, and as far west as central Alabama and northeastern Mississippi. Storks from a colony in south-central Georgia have wintered between southern Georgia and southern Florida. This U.S. nesting population of wood storks was listed as endangered by the U.S. Fish and Wildlife Service on February 28, 1984 (*Federal Register* 49(4):7332-7335).

Wood storks use freshwater and estuarine wetlands as feeding, nesting, and roosting sites. Although storks are not habitat specialists, their needs are exacting enough, and available habitat is limited enough, so that nesting success and the size of regional populations are closely regulated by year-to-year differences in the quality and quantity of suitable habitat. Storks are especially sensitive to environmental conditions at feeding sites; thus, birds may fly relatively long distances either daily or between regions annually, seeking adequate food resources.

All available evidence suggests that regional declines in wood stork numbers have been largely due to the loss or degradation of essential wetland habitat. An understanding of the qualities of good stork habitat should help to focus protection efforts on those sites

that are seasonally important to regional populations of wood storks. Characteristics of feeding, nesting, and roosting habitat, and management guidelines for each, are presented here by habitat type.

I. Feeding habitat.

A major reason for the wood stork decline has been the loss and degradation of feeding habitat. Storks are especially sensitive to any manipulation of a wetland site that results in either reduced amounts or changes in the timing of food availability.

Storks feed primarily (often almost exclusively) on small fish between 1 and 8 inches in length. Successful foraging sites are those where the water is between 2 and 15 inches deep. Good feeding conditions usually occur where water is relatively calm and uncluttered by dense thickets of aquatic vegetation. Often a dropping water level is necessary to concentrate fish at suitable densities. Conversely, a rise in water, especially when it occurs abruptly, disperses fish and reduces the value of a site as feeding habitat.

The types of wetland sites that provide good feeding conditions for storks include: drying marshes or stock ponds, shallow roadside or agricultural ditches, narrow tidal creeks or shallow tidal pools, and depressions in cypress heads or swamp sloughs. In fact, almost any shallow wetland depression where fish tend to become concentrated, either through local reproduction or the consequences of area drying, may be used by storks.

Nesting wood storks do most of their feeding in wetlands between 5 and 40 miles from the colony, and occasionally at distances as great as 75 miles. Within this colony foraging range and for the 110-150 day life of the colony, and depending on the size of the colony and the nature of the surrounding wetlands, anywhere from 50 to 200 different feeding sites may be used during the breeding season.

Non-breeding storks are free to travel much greater distances and remain in a region only for as long as sufficient food is available. Whether used by breeders or non-breeders, any single feeding site may at one time have small or large numbers of storks (1 to 100+), and be used for one to many days, depending on the quality and quantity of available food. Obviously, feeding sites used by relatively large numbers of storks, and/or frequently used areas, potentially are the more important sites necessary for the maintenance of a regional population of birds.

Differences between years in the seasonal distribution and amount of rainfall usually mean that storks will differ between years in where and when they feed. Successful nesting colonies are those that have a large number of feeding site options, including sites that may be suitable only in years of rainfall extremes. To maintain the wide range of feeding site options requires that many different wetlands, with both relatively short and long annual hydroperiods, be preserved. For example, protecting only the larger wetlands, or those with longer annual hydroperiods, will result in the eventual loss of smaller, seemingly less important wetlands. However, these small scale wetlands are crucial as the only available feeding sites during the wetter periods when the larger habitats are too deeply flooded to be used by storks.

II. Nesting habitat.

Wood storks nest in colonies, and will return to the same colony site for many years so long as that site and surrounding feeding habitat continue to supply the needs of the birds. Storks require between 110 and 150 days for the annual nesting cycle, from the period of courtship until the nestlings become independent. Nesting activity may begin as early as December or as late as March in southern Florida colonies, and between late February and April in colonies located between central Florida and South Carolina. Thus, full term colonies may be active until June-July in south Florida, and as late as July-August at more northern sites. Colony sites may also be used for roosting by storks during other times of the year.

Almost all recent nesting colonies in the southeastern U.S. have been located either in woody vegetation over standing water, or on islands surrounded by broad expanses of open water. The most dominant vegetation in swamp colonies has been cypress, although storks also nest in swamp hardwoods and willows. Nests in island colonies may be in more diverse vegetation, including mangroves (coastal), exotic species such as Australian pine (*Casuarina*) and Brazilian Pepper (*Schinus*), or in low thickets of cactus (*Opuntia*). Nests are usually located 15-75 feet above ground, but may be much lower, especially on island sites when vegetation is low.

Since at least the early 1970's, many colonies in the southeastern U.S. have been located in swamps where water has been impounded due to the construction of levees or roadways. Storks have also nested in dead and dying trees in flooded phosphate surface mines, or in low, woody vegetation on mounded, dredge islands. The use of these altered wetlands or completely "artificial" sites suggests that in some regions or years storks are unable to locate natural nesting habitat that is adequately flooded during the normal breeding season. The readiness with which storks will utilize water impoundments for nesting also suggests that colony sites could be intentionally created and maintained through long-term site management plans. Almost all impoundment sites used by storks become suitable for nesting only fortuitously, and therefore, these sites often do not remain available to storks for many years.

In addition to the irreversible impacts of drainage and destruction of nesting habitat, the greatest threats to colony sites are from human disturbance and predation. Nesting storks show some variation in the levels of human activity they will tolerate near a colony. In general, nesting storks are more tolerant of low levels of human activity near a colony when nests are high in trees than when they are low, and when nests contain partially or completely feathered young than during the period between nest construction and the early nestling period (adults still brooding). When adult storks are forced to leave their nests, eggs or downy young may die quickly (<20 minutes) when exposed to direct sun or rain.

Colonies located in flooded environments must remain flooded if they are to be successful. Often water is between 3 and 5 feet deep in successful colonies during the nesting season. Storks rarely form colonies, even in traditional nesting sites, when they are dry, and may abandon nests if sites become dry during the nesting period. Flooding in colonies may be most important as a defense against mammalian predators. Studies of stork colonies in Georgia and

Florida have shown high rates of raccoon predation when sites dried during the nesting period. A reasonably high water level in an active colony is also a deterrent against both human and domestic animal intrusions.

Although nesting wood storks usually do most feeding away from the colony site (>5 miles), considerable stork activity does occur close to the colony during two periods in the nesting cycle. Adult storks collect almost all nesting material in and near the colony, usually within 2500 feet. Newly fledged storks, near the end of the nesting cycle, spend from 1-4 weeks during the fledging process flying locally in the colony area, and perched in nearby trees or marshy spots on the ground. These birds return daily to their nests to be fed. It is essential that these fledging birds have little or no disturbance as far out as one-half mile within at least one or two quadrants from the colony. Both the adults, while collecting nesting material, and the inexperienced fledglings, do much low, flapping flight within this radius of the colony. At these times, storks potentially are much more likely to strike nearby towers or utility lines.

Colony sites are not necessarily used annually. Regional populations of storks shift nesting locations between years, in response to year-to-year differences in food resources. Thus, regional populations require a range of options for nesting sites, in order to successfully respond to food availability. Protection of colony sites should continue, therefore, for sites that are not used in a given year.

III. Roosting habitat.

Although wood storks tend to roost at sites that are similar to those used for nesting, they also use a wider range of site types for roosting than for nesting. Non-breeding storks, for example, may frequently change roosting sites in response to changing feeding locations, and in the process, are inclined to accept a broad range of relatively temporary roosting sites. Included in the list of frequently used roosting locations are cypress "heads" or swamps (not necessarily flooded if trees are tall), mangrove islands, expansive willow thickets or small, isolated willow "islands" in broad marshes, and on the ground either on levees or in open marshes.

Daily activity patterns at a roost vary depending on the status of the storks using the site. Non-breeding adults or immature birds may remain in roosts during major portions of some days. When storks are feeding close to a roost, they may remain on the feeding grounds until almost dark before making the short flight. Nesting storks traveling long distances (>40 miles) to feeding sites may roost at or near the latter, and return to the colony the next morning. Storks leaving roosts, especially when going long distances, tend to wait for mid-morning thermals to develop before departing.

IV. Management zones and guidelines for feeding sites.

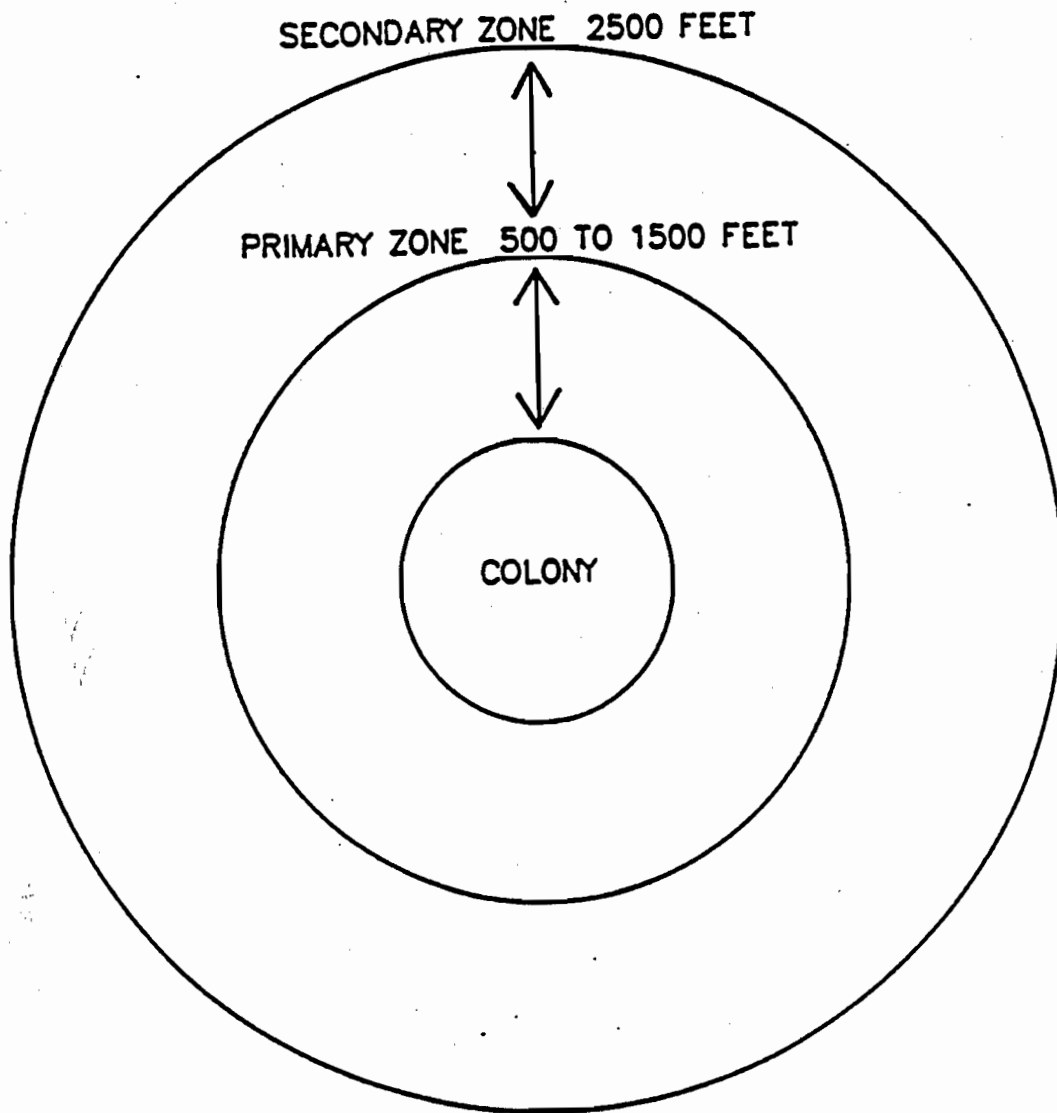
To the maximum extent possible, feeding sites should be protected by adherence to the following protection zones and guidelines:

- A. There should be no human intrusion into feeding sites when storks are present. Depending upon the amount of screening vegetation, human activity should be no closer than between 300 feet (where solid vegetation screens exist) and 750 feet (no vegetation screen).

- B. Feeding sites should not be subjected to water management practices that alter traditional water levels or the seasonally normal drying patterns and rates. Sharp rises in water levels are especially disruptive to feeding storks.
- C. The introduction of contaminants, fertilizers, or herbicides into wetlands that contain stork feeding sites should be avoided, especially those compounds that could adversely alter the diversity and numbers of native fishes, or that could substantially change the characteristics of aquatic vegetation. Increase in the density and height of emergent vegetation can degrade or destroy sites as feeding habitat.
- D. Construction of tall towers (especially with guy wires) within three miles, or high power lines (especially across long stretches of open country) within one mile of major feeding sites should be avoided.

V. **Management zones and guidelines for nesting colonies.**

- A. **Primary zone:** This is the most critical area, and must be managed according to recommended guidelines to insure that a colony site survives.
 - 1. **Size:** The primary zone must extend between 1000 and 1500 feet in all directions from the actual colony boundaries when there are no visual or broad aquatic barriers, and never less than 500 feet even when there are strong visual or aquatic barriers. The exact width of the primary zone in each direction from the colony can vary within this range, depending on the amount of visual screen (tall trees) surrounding the colony, the amount of relatively deep, open water between the colony and the nearest human activity, and the nature of the nearest human activity. In general, storks forming new colonies are more tolerant of existing human activity, than they will be of new human activity that begins after the colony has formed.
 - 2. **Recommended Restrictions:**
 - a. Any of the following activities within the primary zone, at any time of the year, are likely to be detrimental to the colony:
 - (1) Any lumbering or other removal of vegetation, and
 - (2) Any activity that reduces the area, depth, or length of flooding in wetlands under and surrounding the colony, except where periodic (less than annual) water control may be required to maintain the health of the aquatic, woody vegetation, and
 - (3) The construction of any building, roadway, tower, power line, canal, etc.
 - b. The following activities within the primary zone are likely to be detrimental to a colony if they occur when the colony is active:
 - (1) Any unauthorized human entry closer than 300 feet of the colony, and



- (2) Any increase or irregular pattern in human activity anywhere in the primary zone, and
 - (3) Any increase or irregular pattern in activity by animals, including livestock or pets, in the colony, and
 - (4) Any aircraft operation closer than 500 feet of the colony.
- B. **Secondary Zone:** Restrictions in this zone are needed to minimize disturbances that might impact the primary zone, and to protect essential areas outside of the primary zone. The secondary zone may be used by storks for collecting nesting material, for roosting, loafing, and feeding (especially important to newly fledged young), and may be important as a screen between the colony and areas of relatively intense human activities.
- 1. **Size:** The secondary zone should range outward from the primary zone 1000-2000 feet, or to a radius of 2500 feet of the outer edge of the colony.
 - 2. **Recommended Restrictions:**
 - a. **Activities in the secondary zone which may be detrimental to nesting wood storks include:**
 - (1) Any increase in human activities above the level that existed in the year when the colony first formed, especially when visual screens are lacking, and
 - (2) Any alteration in the area's hydrology that might cause changes in the primary zone, and
 - (3) Any substantial (>20 percent) decrease in the area of wetlands and woods of potential value to storks for roosting and feeding.
 - b. In addition, the probability that low flying storks, or inexperienced, newly-fledged young will strike tall obstructions, requires that high-tension power lines be no closer than one mile (especially across open country or in wetlands) and tall transmission towers no closer than 3 miles from active colonies. Other activities, including busy highways and commercial and residential buildings may be present in limited portions of the secondary zone at the time that a new colony first forms. Although storks may tolerate existing levels of human activities, it is important that these human activities not expand substantially.

VI. Roosting site guidelines.

The general characteristics and temporary use-patterns of many stork roosting sites limit the number of specific management recommendations that are possible:

- A. Avoid human activities within 500-1000 feet of roost sites during seasons of the year and times of the day when storks may be present. Nocturnal activities in active roosts may be especially disruptive.

- B. Protect the vegetative and hydrological characteristics of the more important roosting sites--those used annually and/or used by flocks of 25 or more storks. Potentially, roosting sites may, some day, become nesting sites.

VII. Legal Considerations.

A. Federal Statutes

The U.S. breeding population of the wood stork is protected by the Endangered Species Act of 1973, as amended (16 U.S.C. 1531 et seq.)(Act). The population was listed as endangered on February 28, 1984 (49 Federal Register 7332); wood storks breeding in Alabama, Florida, Georgia, and South Carolina are protected by the Act.

Section 9 of the Endangered Species Act of 1973, as amended, states that it is unlawful for any person subject to the jurisdiction of the United States to take (defined as "harass, harm, pursue, hunt, shoot, wound, kill, trap, capture, or collect, or to attempt to engage in any such conduct.") any listed species anywhere within the United States.

The wood stork is also federally protected by its listing (50 CFR 10.13) under the Migratory Bird Treaty Act (167 U.S.C. 703-711), which prohibits the taking, killing or possession of migratory birds except as permitted.

B. State Statutes

1. State of Alabama

Section 9-11-232 of Alabama's Fish, Game, and Wildlife regulations curtails the possession, sale, and purchase of wild birds. "Any person, firm, association, or corporation who takes, catches, kills or has in possession at any time, living or dead, any protected wild bird not a game bird or who sells or offers for sale, buys, purchases or offers to buy or purchase any such bird or exchange same for anything of value or who shall sell or expose for sale or buy any part of the plumage, skin, or body of any bird protected by the laws of this state or who shall take or willfully destroy the nests of any wild bird or who shall have such nests or eggs of such birds in his possession, except as otherwise provided by law, shall be guilty of a misdemeanor..."

Section 1 of the Alabama Nongame Species Regulation (Regulation 87-GF-7) includes the wood stork in the list of nongame species covered by paragraph (4). "It shall be unlawful to take, capture, kill, possess, sell, trade for anything of monetary value, or offer to sell or trade for anything of monetary value, the following nongame wildlife species (or any parts or reproductive products of such species) without a scientific collection permit and written permission from the Commissioner, Department of Conservation and Natural Resources...."

2. State of Florida

Rule 39-4.001 of the Florida Wildlife Code prohibits "taking, attempting to take, pursuing, hunting, molesting, capturing, or killing (collectively defined as "taking"), transporting, storing, serving, buying, selling,

possessing, or wantonly or willingly wasting any wildlife or freshwater fish or their nests, eggs, young, homes, or dens except as specifically provided for in other rules of Chapter 39, Florida Administrative Code.

Rule 39-27.011 of the Florida Wildlife Code prohibits "killing, attempting to kill, or wounding any endangered species." The "Official Lists of Endangered and Potentially Endangered Fauna and Flora in Florida" dated 1 July 1988, includes the wood stork, listed as "endangered" by the Florida Game and Fresh Water Fish Commission.

3. State of Georgia

Section 27-1-28 of the Conservation and Natural Resources Code states that "Except as otherwise provided by law, rule, or regulation, it shall be unlawful to hunt, trap, fish, take, possess, or transport any nongame species of wildlife..."

Section 27-1-30 states that, "Except as otherwise provided by law or regulation, it shall be unlawful to disturb, mutilate, or destroy the dens, holes, or homes of any wildlife: "

Section 27-3-22 states, in part, "It shall be unlawful for any person to hunt, trap, take, possess, sell, purchase, ship, or transport any hawk, eagle, owl, or any other bird or any part, nest, or egg thereof..."

The wood stork is listed as endangered pursuant to the Endangered Wildlife Act of 1973 (Section 27-3-130 of the Code). Section 391-4-13-.06 of the Rules and Regulations of the Georgia Department of Natural Resources prohibits harassment, capture, sale, killing, or other actions which directly cause the death of animal species protected under the Endangered Wildlife Act. The destruction of habitat of protected species on public lands is also prohibited.

4. State of South Carolina

Section 50-15-40 of the South Carolina Nongame and Endangered Species Conservation Act states, "Except as otherwise provided in this chapter, it shall be unlawful for any person to take, possess, transport, export, process, sell, or offer of sale or ship, and for any common or contract carrier knowingly to transport or receive for shipment any species or subspecies of wildlife appearing on any of the following lists: (1) the list of wildlife indigenous to the State, determined to be endangered within the State...(2) the United States' List of Endangered Native Fish and Wildlife... (3) the United States' List of Endangered Foreign Fish and Wildlife ..."

