


Proposed Restoration Projects

Use of NRDA Funds from a Bankruptcy Related to
Portage Creek and Operable Unit 1
for the Allied Paper Property, Allied Paper, Inc. /
Portage Creek / Kalamazoo River Superfund Site

Public Meeting
May 1, 2012
Kalamazoo, Michigan

Kalamazoo Natural Resource Trustee Council

Topics

- ▶ Who are the members of the Natural Resource Trustee Council and what is a Natural Resource Damage Assessment (NRDA)?
 - ▶ Why are the Trustees currently focusing on Portage Creek and Operable Unit 1?
 - ▶ How does this relate to Superfund cleanup?
 - ▶ What is a Restoration Plan/Environmental Assessment (RP/EA)?
 - ▶ What restoration projects are the Trustees proposing?
 - ▶ Where do we go from here?
- 

Who Are the Members of the Natural Resource Trustee Council?

- ▶ The Natural Resource Trustee Council consists of agencies authorized under federal and Michigan law to seek environmental restoration
 - Michigan Department of Natural Resources (MDNR)
 - Michigan Department of Environmental Quality (MDEQ)
 - Michigan Attorney General
 - U.S. Fish and Wildlife Service (USFWS)
 - National Oceanic and Atmospheric Administration (NOAA)



What is NRDA?

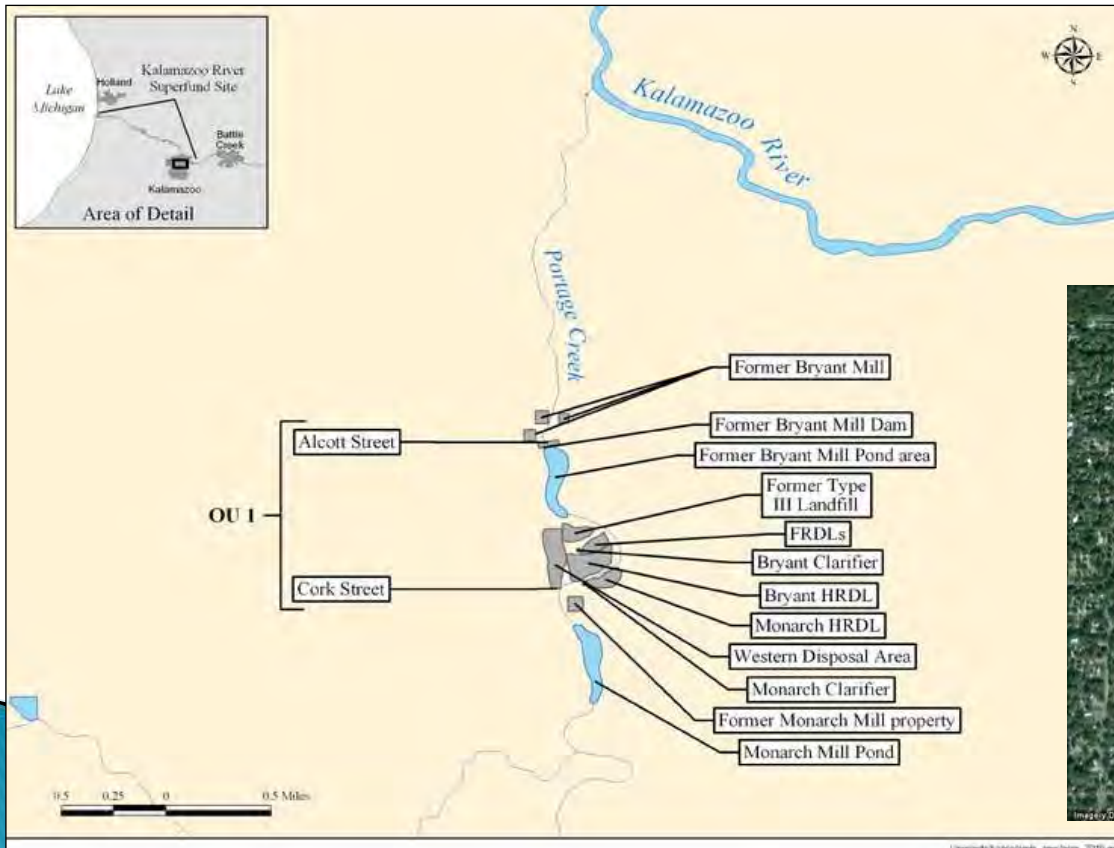
- ▶ A process that the Trustees use to:
 - assess injuries to natural resources that have been caused by releases of hazardous substances
 - plan and conduct restoration actions that can compensate for injuries
- ▶ The purpose is to make the public whole, beyond site cleanup
- ▶ The responsible party is required to provide for restoration
- ▶ This Trustee Council has been working on the Kalamazoo River NRDA since 2000
 - Assessment plan and reports
 - Input on cleanup projects
 - Restoration projects compiled
 - Selection criteria developed



(<http://www.fws.gov/midwest/es/ec/nrda/KalamazooRiver>)

Portage Creek and Operable Unit 1

- ▶ Operable Unit 1 of the Kalamazoo River Superfund Site consists of the former Allied Paper, Inc. Bryant Mill and former Allied Paper Company Monarch Mill along Portage Creek




Why Focus on Portage Creek and Operable Unit 1?

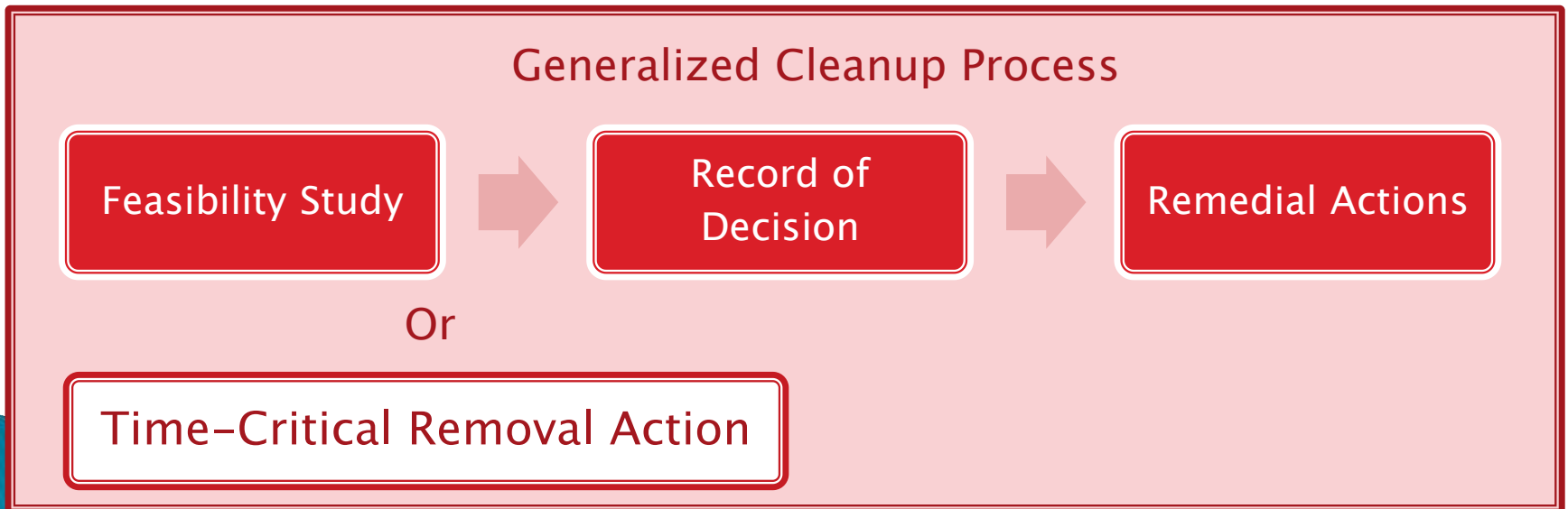
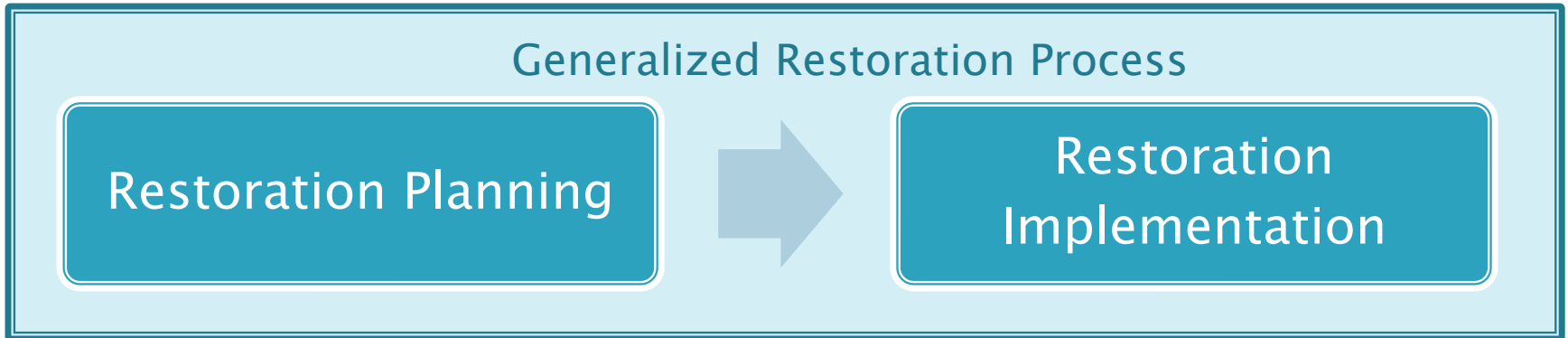
- ▶ The natural resources of OU1 and Portage Creek have been contaminated with PCBs from the recycling of carbonless copy paper
 - PCBs are persistent and accumulate in organisms
 - PCBs are toxic to fish, birds, mammals, and other wildlife
- ▶ LyondellBasell Industries, the primary responsible party for Operable Unit 1, filed for bankruptcy in 2009
 - The Trustees received approximately \$2 million from the bankruptcy settlement to conduct restoration related to OU1 and Portage Creek
 - U.S. EPA received separate funds for cleanup
- ▶ Bryant Mill Pond Removal in 1998, U.S. EPA has begun additional cleanup ...



How Does this Relate to Superfund Cleanup?

- ▶ EPA is charged with cleaning up PCB contamination based on risk to humans and environment
 - Removal actions, e.g. Bryant Mill Pond, Portage Creek
 - Remediation, e.g. OU1
 - ▶ The Trustee Council is charged with ensuring that natural resource restoration compensates the public for injuries to natural resources
 - ▶ Restoration will be coordinated with cleanup actions and can occur in parallel
- 

Generalized Restoration and Cleanup Process



Restoration Planning: What is an RP/EA?

- ▶ A Restoration Plan/Environmental Assessment is a document intended to
 - Describe the selection of potential restoration projects that can serve as compensation for injuries to natural resources
 - Notify the public about these potential projects
 - Help with coordination between agencies to ensure that proposed restoration actions will not conflict with proposed remedial actions
- ▶ The Trustee agencies are asking for your comments on this RP/EA

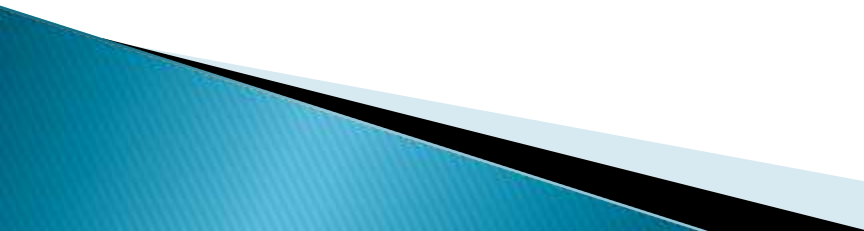


Why Else Are the Trustees Preparing an RP/EA?



- ▶ A RP is required under the Comprehensive Environmental Response, Compensation, and Liability Act (CERCLA)
 - Specific for NRDA
- ▶ An EA is required under the National Environmental Policy Act (NEPA)
 - Federal agencies must evaluate the impact of their decisions on the environment
 - Compare to “no action alternative”
 - Following an EA, agencies either
 - issue a finding of no significant impact, or
 - proceed to an Environmental Impact Statement
- ▶ An RP/EA is usually issued as a combined document for efficiency

What Restoration Projects Are the Trustees Proposing?

- ▶ In the Kalamazoo River Watershed
 - ▶ May be implemented with available funding
 - ▶ The Trustees screened projects using our restoration criteria so that projects would be:
 - Feasible and comply with applicable laws and regulations
 - Focused on restoring the types of resources that were injured
 - Likely to be successful and generate quantifiable benefits
 - ▶ Priority was given to projects that
 - Improve aquatic and riparian habitat
 - Protect and enhance habitat (including upland, wetland, and riparian)
 - Are nearer to and most like Portage Creek corridor
- 

Proposed Projects



1. Alcott Street Dam

Description: Remove Alcott Street Dam

Location: Portage Creek

Benefits:

- ▶ Improve connectivity of aquatic habitat
- ▶ Allow access for fish to quality upstream habitat
- ▶ Build on success of Performance Paper restoration project

Priority: High

Alcott Street Dam



Source: M. Ducharme, MDEQ



2. Urban Nature Park

Description: Reestablish native vegetation in former brownfield sites and provide public access, with Kalamazoo Nature Center

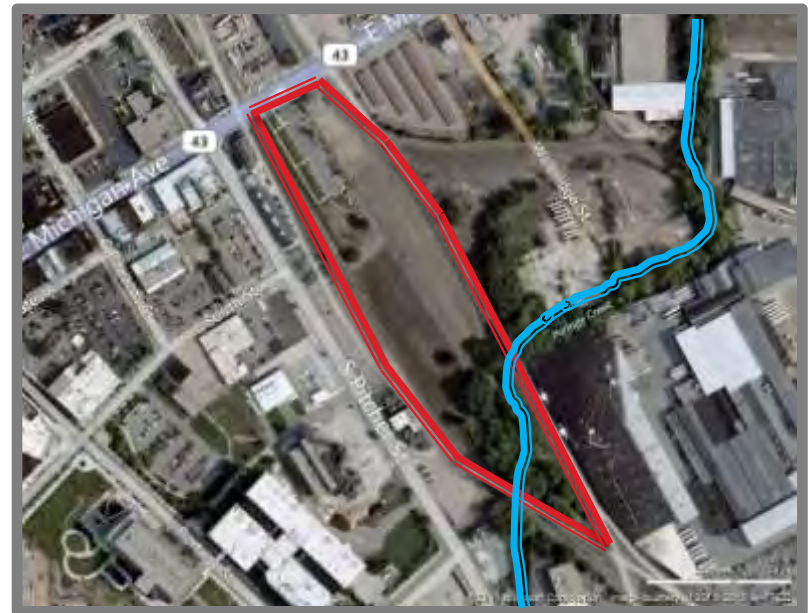
Location: Along Portage Creek in Kalamazoo

Benefits:

- ▶ Improve upland and wetland habitat for birds, fish, and other species
- ▶ Connect habitat and people

Priority: High

Approximate location of proposed park (red) and Portage Creek (blue)



Source: Bing Maps, 2011

3. Wetland Creation

Description: Replace existing fill near creek with created wetland

Location: Bronson Hospital Property, Portage Creek*

Benefits:

- ▶ Create valuable wetland habitat
- ▶ Improve connectivity between stream and floodplain
- ▶ Create floodplain storage in channelized section of creek

Priority: High

View from Lake St. Bridge



Source: L. Williams, USFWS

*Currently being used as a staging area for EPA's Time-Critical Removal Action.

Proposed Projects



4. Wetland Restoration

Description: Reestablish native wetlands and natural streambanks

Location: Rice Creek

Benefits:

- ▶ Improve hydrological connectivity between creek and floodplain
- ▶ Reduce creek velocity
- ▶ Build on community efforts
- ▶ Improve wetland habitat for fish, birds, invertebrates, other species

Priority: Medium

Rice Creek Watershed Land Cover Map



Source: Rice Creek Management Plan

Watershed Partnership Trout Habitat Project



Source: Partnership Project Fact Sheet

5. Riparian Habitat Preservation

Description: Acquire and preserve riparian habitat

Location: To be determined along Kalamazoo River downstream of Lake Allegan

Benefits:

- ▶ Protect riparian habitat
- ▶ Provide benefits to birds and other wildlife

Priority: Medium



Proposed Projects



6. Upland Habitat Preservation

Description: Acquire and preserve land under threat of development

Location: Pitchfork Valley, headwaters of Augusta Creek

Benefits: Protect upland habitat proximal to lakes that feed Augusta Creek

Priority: Low



Source: Southwest Michigan Land Conservancy

7. Hardwood Forest Protection

Description: Acquire and protect upland hardwood forest habitat

Location: Next to Fair Lake, about 15 miles northeast of Kalamazoo

Benefits:

- ▶ Protect upland forests that provide habitat for birds, mammals, and other species
- ▶ Provide indirect benefits to Fair Lake and Augusta Creek

Priority: Low



8. Upland Habitat Preservation

Description: Acquire and protect upland oak–hickory hardwood forest habitat, open grasslands, wetlands, and ponds

Location: North of Lake Doster in Gunplain Township, north of Kalamazoo

Benefits: Protect habitats that benefit abundant wildlife in this intact upland/wetland complex

Priority: Low

Example of oak–hickory hardwood forest (not project location)



Source: USFWS

Summary

- ▶ Bankruptcy funds available now for restoration
- ▶ Trustees collected project ideas
 - Ranked on NRDA criteria
 - Focused on Portage Creek and OUI injuries
 - Considered available funding
 - Considered cleanup actions completed and planned
- ▶ Restoration Plan / EA available for your review

Where Do We Go from Here?

- ▶ Public review and comments are welcome!
 - Comments due June 1, 2012
- ▶ RP/EA is available for public review:
 - Websites:
 - www.fws.gov/midwest/es/ec/nrda/KalamazooRiver/
 - www.darrp.noaa.gov/greatlakes/kalamazoo/
 - www.michigan.gov/deq/0,4561,7-135-3311_4109_4217-84646--,00.html
 - Local libraries (see fact sheet for locations)
 - Paper copies available by request
- ▶ Trustees will review comments
 - Consider changes to RP/EA
 - Re-issue a new draft or finalize RP/EA
- ▶ Begin restoration

Discussion



Contacts:

Judith Alfano, MDEQ: Alfanoj@michigan.gov

Lisa Williams, USFWS: Lisa_Williams@fws.gov

Todd Goeks, NOAA: Todd.Goeks@noaa.gov